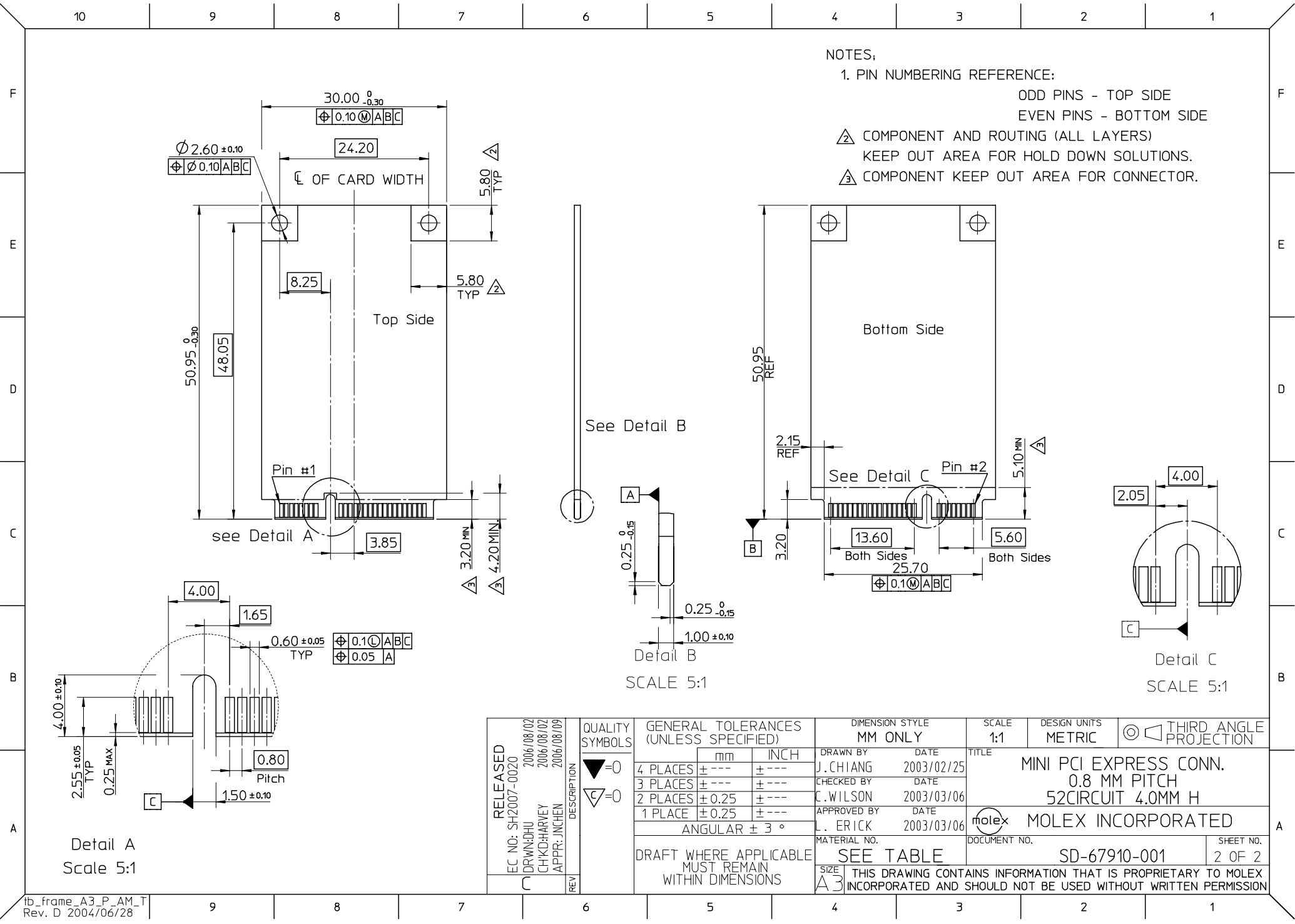


- NOTES:
1. MATERIALS:  
HOUSING:LCP,COLOR:BLACK, UL94V-0.  
CONTACT: PHOSPHOR BRONZE NAIL:BRASS
  2. FINISH  
CONTACT:SELECTIVE GOLD IN CONTACT AND SOLDER AREA.  
UNDERPLATED:NICKEL OVERALL  
NAIL:TIN IN SOLDER AREA.  
UNDERPLATED:NICKEL OVERALL.
  3. THE MODULE CARD REFERENCE MINI PCI EXPRESS CARD  
ELECTROMECHANICAL SPECIFICATION.
  4. DATUM D IS THE TOP SURFACE OF PCB.
  5. IF THE CONNECTOR USED WITH 48099-00\*\*,LATCH SIDE  
RECOMMENDED PCB LAYOUT REFERS TO SD-48099-0\*\*.
  6. PART 67910\*\*\*\* COMPLIANT TO ROHS DIRECTIVE 2002/95/EC  
AND ELV DIRECTIVE 2000/53/EC.

679100002	10 MICROINCH GOLD
679101002	GOLD FLASH

RELEASED EC NO: SH2007-0020 2006/08/02 DRWN:DHU CHKD:HARVEY 2006/08/02 APPR: INCHEM 2006/08/09	DESCRIPTION REV	QUALITY SYMBOLS  ▽=0 ◻=0	GENERAL TOLERANCES (UNLESS SPECIFIED)		DIMENSION STYLE MM ONLY		SCALE 2:1	DESIGN UNITS METRIC	THIRD ANGLE PROJECTION			
				mm	INCH	DRAWN BY J. CHIANG	DATE 2003/02/25	TITLE MINI PCI EXPRESS CONN. 0.8 MM PITCH 52CIRCUIT 4.0MM H				
			4 PLACES	± ---	± ---	CHECKED BY	DATE					
			3 PLACES	± ---	± ---	C. WILSON	2003/03/06					
			2 PLACES	± 0.25	± ---	APPROVED BY	DATE	MOLEX MOLEX INCORPORATED				
			1 PLACE	± 0.25	± ---	L. ERICK	2003/03/06					
			ANGULAR ± 3 °		MATERIAL NO.		DOCUMENT NO.		SHEET NO.			
			DRAFT WHERE APPLICABLE MUST REMAIN WITHIN DIMENSIONS		SEE TABLE		SD-67910-001		1 OF 2			
					SIZE A3		THIS DRAWING CONTAINS INFORMATION THAT IS PROPRIETARY TO MOLEX INCORPORATED AND SHOULD NOT BE USED WITHOUT WRITTEN PERMISSION					



NOTES:

1. PIN NUMBERING REFERENCE:

ODD PINS - TOP SIDE

EVEN PINS - BOTTOM SIDE

△ COMPONENT AND ROUTING (ALL LAYERS)

KEEP OUT AREA FOR HOLD DOWN SOLUTIONS.

△ COMPONENT KEEP OUT AREA FOR CONNECTOR.

# Mouser Electronics

Authorized Distributor

Click to View Pricing, Inventory, Delivery & Lifecycle Information:

Molex:

[67910-0002](#)