

PLEASE CHECK WWW.MOLEX.COM FOR LATEST PART INFORMATION

Part Number:

0622019004

Status:

Active

Overview:

Application Tooling

Description:

Installation Press-in Tool for Impel Plus 1.90mm Pitch Daughtercard Guided Assemblies (6-Pair by 10 Column)

Documents:

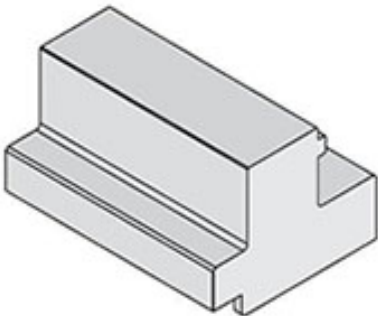
RoHS Certificate of Compliance (PDF)

General	
Product Family	Application Tooling
Series	207123
Function	Insertion
Geographic Area	Global
Level of Automation	Manual
More Detailed Tech Information	applicationtooling@molex.com
Overview	Application Tooling
Product Name	Impel
Tool Type	Press-Fit Insertion Tool
UPC	193264142675
Warranty Disclaimer	CAUTION: Molex tooling crimp specifications are valid only when used with Molex terminals and tooling manufactured by Molex and sold by Molex or authorized distributors ("Molex Tooling"). When using tooling other than Molex Tooling with Molex specific connector systems listed in our ATS documents, the Molex tooling qualification does not apply and the responsibility for full qualification of the connector system is that of the customer. Molex accepts no liability for connector performance or tooling support where tooling other than Molex Tooling is used or where Molex Tooling is modified.

Material Info

Reference - Drawing Numbers

Application Tooling Documents622019004-000



Series image - Reference only

EU ELV	
Not Reviewed	
EU RoHS	China RoHS
Not Reviewed	
REACH SVHC	
Not Reviewed	
Halogen-Free	
Status	
Not Reviewed	
For more information, please visit Contact US	
China ROHS	Not Reviewed
ELV	Not Reviewed
RoHS Phthalates	Not Reviewed

Search Parts in this Series

207123 Series

Application Tooling Description	FAQ Product #
Impel 90 Ohm, 6 Pair Right-Angle Daughtercard, 1.90mm Pitch, Left Guided, 16 Columns, 192 Circuits, Plated Through Hole Dimension 0.36mm	1714003026
Impel 90 Ohm, 6 Pair Right-Angle Daughtercard, 1.90mm Pitch, Left Guided, 16 Columns, 192 Circuits, Plated Through Hole Dimension 0.36mm, Keying Orientation A	1714003126
Impel 90 Ohm, 6 Pair Right-Angle Daughtercard, 1.90mm Pitch, Right Guided, 16 Columns,	1714005026

192 Circuits, Plated
Through Hole
Dimension 0.36mm
Impel 90 Ohm, 6 1714005126
Pair Right-Angle
Daughtercard,
1.90mm Pitch, Right
Guided, 16 Columns,
192 Circuits, Plated
Through Hole
Dimension 0.36mm,
Keying Orientation A

This document was generated on 06/17/2021
PLEASE CHECK WWW.MOLEX.COM FOR LATEST PART INFORMATION

Mouser Electronics

Authorized Distributor

Click to View Pricing, Inventory, Delivery & Lifecycle Information:

Molex:

62201-9004