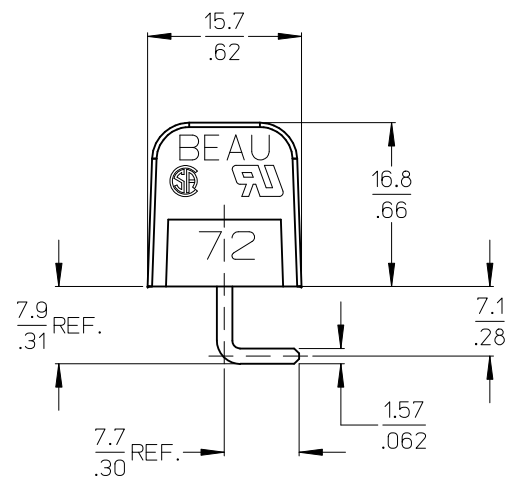
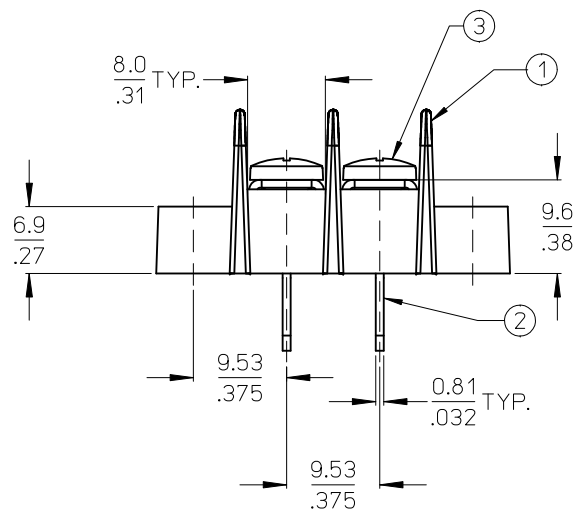
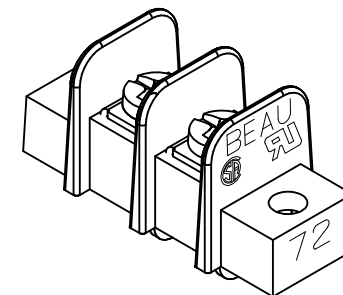
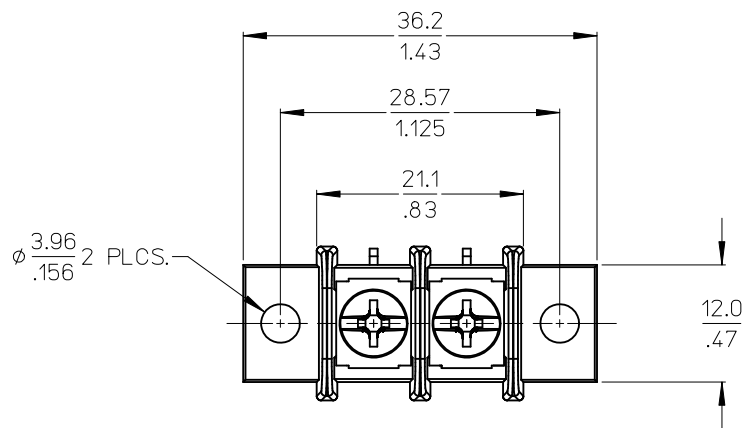


10 9 8 7 6 5 4 3 2 1



- NOTES:  
 1. MATERIAL: SEE TABLE.  
 2. FINISHES: SEE TABLE.  
 3. PRODUCT SPECIFICATION: NOT REQUIRED.  
 4. ROHS COMPLIANT.

3	2	SCREW,#6-32X.250 BHD,PHIL-SLOT,SS	STAINLESS STEEL	PASSIVATED
2	2	TERMINAL, WW, LONG	BRASS	TIN PLATE
1	1	INSULATOR, SR, PC, SOLID MTG.	POLYESTER (PBT)	BLACK
ITEM	QTY.	DESCRIPTION	MATERIAL	FINISH

CHANGE SCREW, REDRAWN  
 EC NO: WNA2011-0086  
 DRAWN: JENCINAS 2010/09/03  
 CHKD: JENCINAS  
 APPR: JMACNEIL 2011/05/06  
 REV B

QUALITY SYMBOLS  
 ▼=0  
 ▽=0

GENERAL TOLERANCES (UNLESS SPECIFIED)	
4 PLACES	± .005
3 PLACES	± .010
2 PLACES	± .013
1 PLACE	± .030
ANGULAR ± 2 °	
DRAFT WHERE APPLICABLE MUST REMAIN WITHIN DIMENSIONS	

DIMENSION STYLE	
MM/IN	
DRAWN BY	DATE
JENCINAS	2010/09/01
CHECKED BY	DATE
CLYORK	2010/09/01
APPROVED BY	DATE
JMACNEIL	2011/05/06
MATERIAL NO.	
387291598	

SCALE	
2:1	
DESIGN UNITS	
INCH	
THIRD ANGLE PROJECTION	
TITLE	
9.53/.375" SR BTS ASSY	
PCRA, SS SCREW,SOLID MTG	
(72802-E-56-R30-55)	
MOLEX INCORPORATED	
DOCUMENT NO.	SHEET NO.
SD-38729-1598	1 OF 1

# Mouser Electronics

Authorized Distributor

Click to View Pricing, Inventory, Delivery & Lifecycle Information:

Molex:

38729-1598