

# NOTES

## 1. MATERIALS:

HOUSING: POLYESTER UL 94V-0, COLOR: WHITE.  
STANDARD CONTACT: PHOSPHOR BRONZE.  
HIGH CURRENT CONTACT: BRASS.

## 2. FINISH:

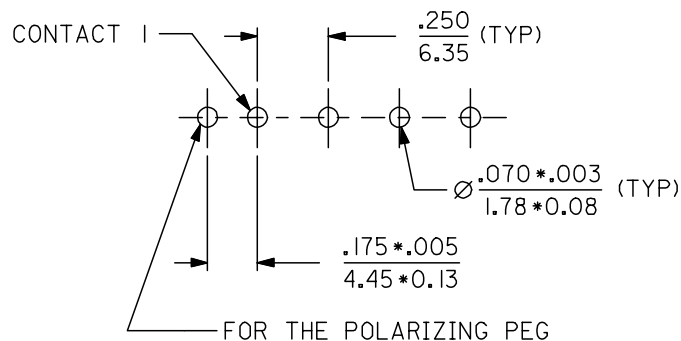
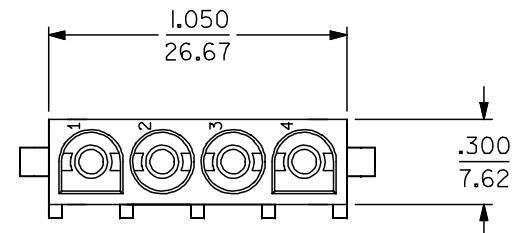
STANDARD CONTACT: TIN-LEAD(Sn-Pb);  
THICKNESS=20 MICROINCH TO 80 MICROINCH.  
HIGH CURRENT CONTACT: SILVER; THICKNESS=200 MICROINCH,  
OVER NICKEL; THICKNESS=40 MICROINCH.

## 3. PRODUCT SPECIFICATION: NONE.

## 4. DIMENSIONS ARE FOR REFERENCE ONLY UNLESS INDICATED OTHERWISE.

## 5. HEADER ASSEMBLY MATES WITH: PLUG HOUSINGS .084/(2.13) DIS SERIES:(42021-\*\*).

## 6. CONTACTS ARE ON .250/(6.35) GRID CENTERLINE SPACING.



LENGTH OF COMPLIANT  
POLARIZING PEG (TYP) .200  
5.08

HIGH CURRENT  
CONTACT (1 PLACE)

STANDARD  
CONTACT (3 PLACES)

PCB LAYOUT: COMPONENT SIDE  
RECOMMENDED PCB THICKNESS: 0.062  
1.57



EC No. I2004-0406  
DRWN: S.S. 05/04/04  
CHK: G.L. 05/04/04  
APPR: G.L. 05/04/04

QUALITY SYMBOLS  
MAJOR = 0  
CRITICAL C = 0

GENERAL TOLERANCES: (UNLESS SPECIFIED)		SCALE	DESIGN UNITS	THIRD ANGLE PROJECTION	DIMENSIONS:	SHT	REV
4 PLACES	±0.00	25:1	mm	<input checked="" type="checkbox"/> mm <input type="checkbox"/> INCH	mm INCH mm ONLY		
3 PLACES	±0.01						
2 PLACES	±0.25						
1 PLACE	±0.36						
ANGULAR: ± 1/2°							

DRAWN BY & DATE  
G.LOWE 22/10/99  
CHECKED BY & DATE  
G.LOWE 22/10/99  
APPROVED BY & DATE  
G.LOWE 22/10/99  
CAD FILENAME  
S-3653701.S01

TITLE: HEADER ASSEMBLY  
.084 (2.13) SERIES  
COMPLIANT POLARIZING PEG  
MOLEX INCORPORATED  
MATERIAL NO. 36537-0001  
DRAWING NO. SD-36537-001  
SHEET NO. 1 OF 1  
SIZE A

# Mouser Electronics

Authorized Distributor

Click to View Pricing, Inventory, Delivery & Lifecycle Information:

Molex:

36537-0001