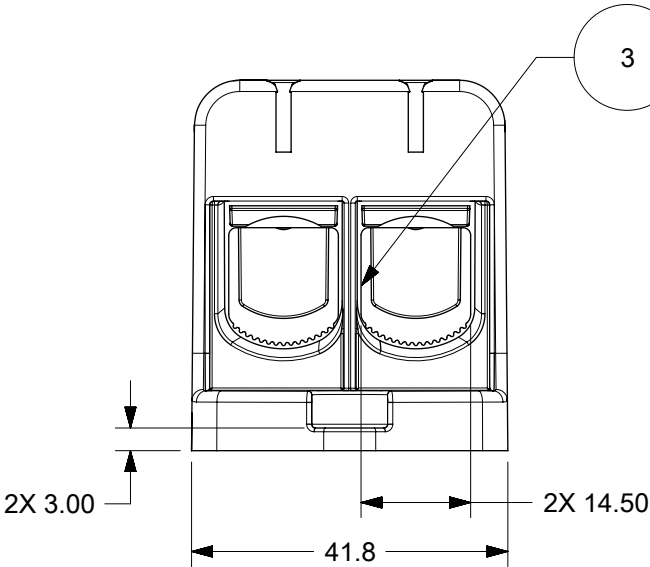
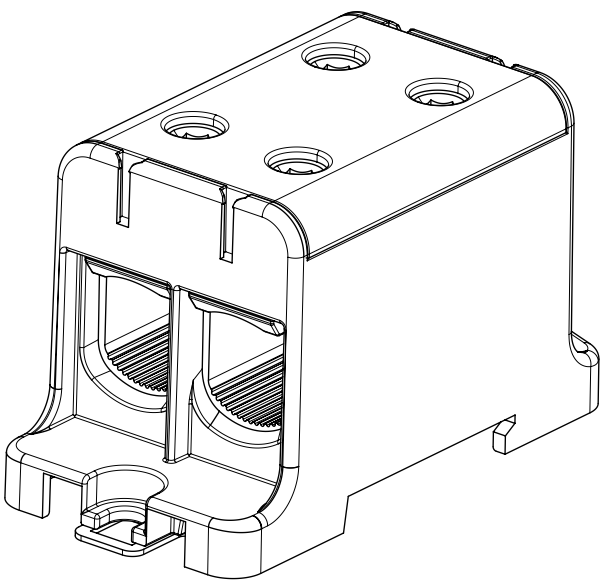
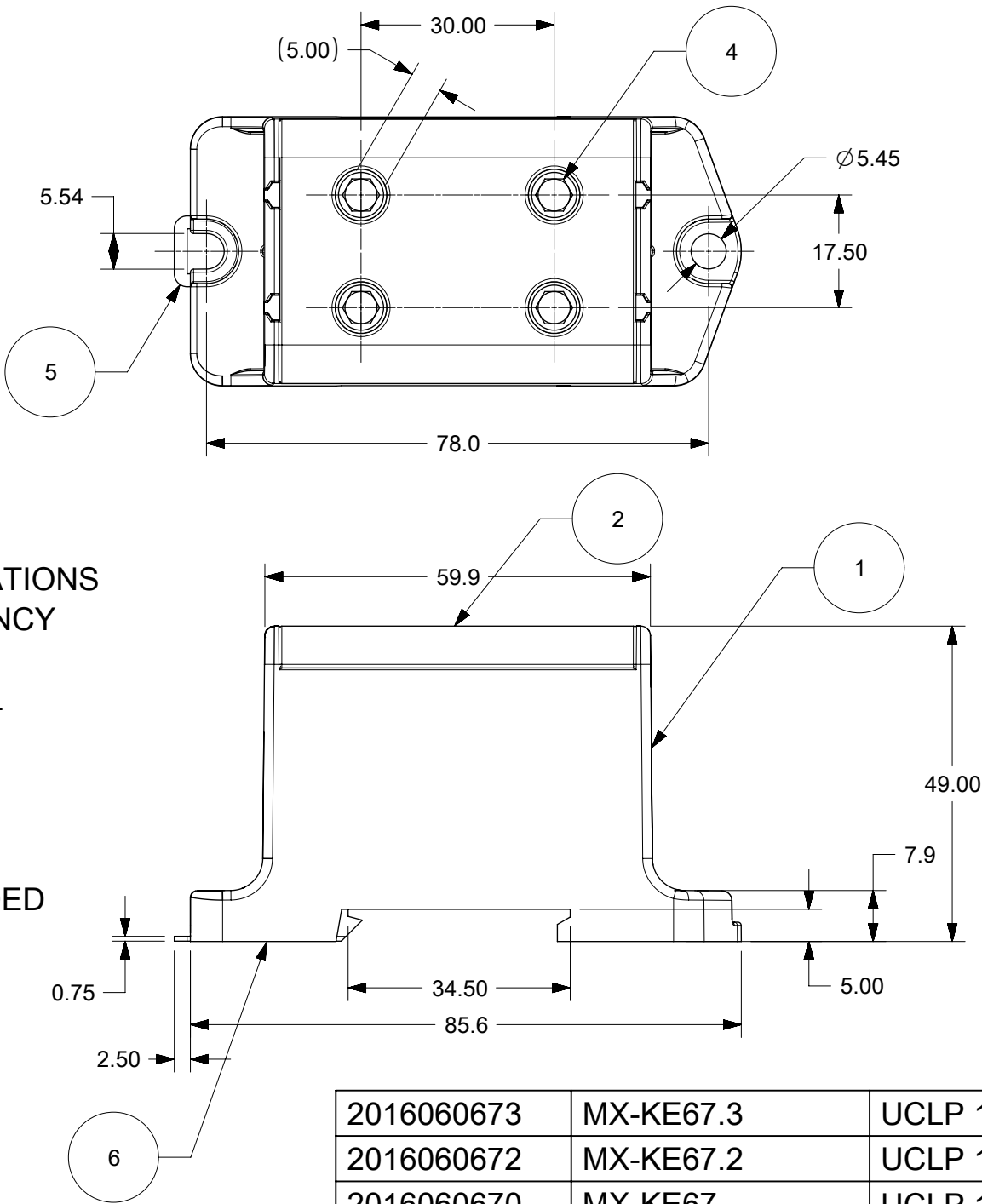


NOTES:

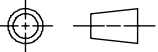
1. MOUNTING TYPE: 35mm DIN RAIL OR SCREW.
2. VOLTAGE: 600 V (UL).
3. CURRENT: Cu 230 A, Al 180 A (UL).
4. WIRE CROSS-SECTION RANGE, UL:  
Cu/Al 4-4/0 AWG (21-107mm<sup>2</sup>) STRANDED,  
Cu 3 X 6 AWG (3 X 13.3mm<sup>2</sup>) STRANDED,  
Cu 2 X 2-6 AWG (2 X 13.3-33.6mm<sup>2</sup>) STRANDED.
5. HEAD CAP SCREW WITH 5 mm HEXAGON  
SOCKET SIZE.  
USE A TOOL WITH LENGTH ALLOWING FOR  
A FULL SCREW ENGAGEMENT.
6. RECOMMENDED TIGHTENING TORQUE:  
126 Lb-In (14 Nm).
7. ALL ELECTRICAL AND MECHANICAL SPECIFICATIONS  
ARE PER UL1059 AS NOTED IN MOLEX UL AGENCY  
APPROVAL.
8. THE SUITABILITY OF THESE TERMINALS SHALL  
BE DETERMINED IN THE END-USE  
INVESTIGATION.
9. AS ENVIRONMENTAL BARRIER DIELECTRIC  
GREASE MAY BE PRESENT IN THE WIRING  
CHAMBER. ENSURE TO USE THE RECOMMENDED  
TIGHTING TORQUE FOR ALL CONDUCTORS.



2016060673	MX-KE67.3	UCLP 1PL GRN/YLW W/SCR 230A	GREEN	YELLOW
2016060672	MX-KE67.2	UCLP 1PL GRY/BLU W/SCR 230A	GREY	BLUE
2016060670	MX-KE67	UCLP 1PL GRY/GRY W/SCR 230A	GREY	GREY
MATERIAL No.	ENGINEERING No.	DESCRIPTION	HOUSING COLOR	COVER COLOR

6	1	SPRING, LATCH	STEEL
5	1	LATCH, DIN	STEEL
4	4	SCREW, SET	ALUMINUM
3	1	CAGE, 1P	ALUMINUM
2	1	COVER	POLYAMIDE
1	1	HOUSING	POLYAMIDE
ITEM	QTY	DESCRIPTION	MATERIAL

THIS DRAWING CONTAINS INFORMATION THAT IS PROPRIETARY TO MOLEX ELECTRONIC TECHNOLOGIES, LLC AND SHOULD NOT BE USED WITHOUT WRITTEN PERMISSION

RELEASE	EC NO: 120665 DRWN: WLEUNG CHK'D: DNGUYEN62 APPR: JFMURPHY	2017/08/14 2017/08/15 2017/08/18	GENERAL TOLERANCES (UNLESS SPECIFIED)		DIMENSION UNITS		SCALE		molex®						
			ANGULAR TOL ± °		mm		1:1								
			4 PLACES ±		DRWN BY		DATE		MX-KE67						
			3 PLACES ±		WLEUNG		2017/08/14								
			2 PLACES ± SEE CHART		CHK'D BY		DATE								
			1 PLACE ± SEE CHART		DNGUYEN62		2017/08/15								
			0 PLACES ±		APPR BY		DATE		PRODUCT CUSTOMER DRAWING						
			DRAFT WHERE APPLICABLE MUST REMAIN WITHIN DIMENSIONS		JFMURPHY		2017/08/18								
			A	REV		DRAWING SIZE		THIRD ANGLE PROJECTION		SERIES		MATERIAL NUMBER		CUSTOMER	
						B				201606		SEE CHART			
							DOCUMENT NUMBER		DOC TYPE		DOC PART		SHEET NUMBER		
							2016060670		PSD		000		1 OF 1		

# Mouser Electronics

Authorized Distributor

Click to View Pricing, Inventory, Delivery & Lifecycle Information:

Molex:

[201606-0672](#) [201606-0673](#)