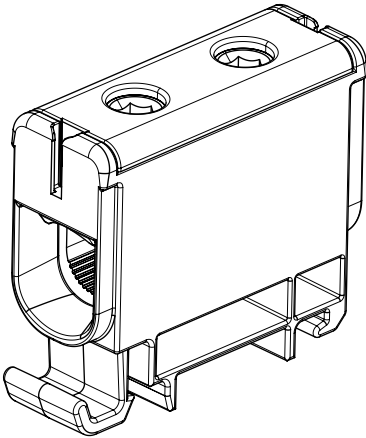
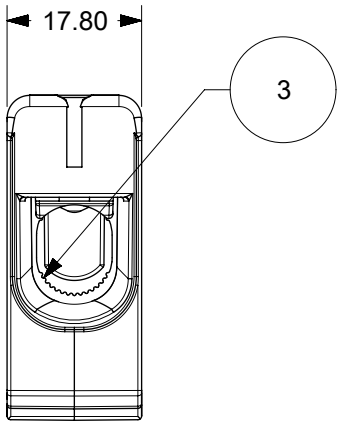
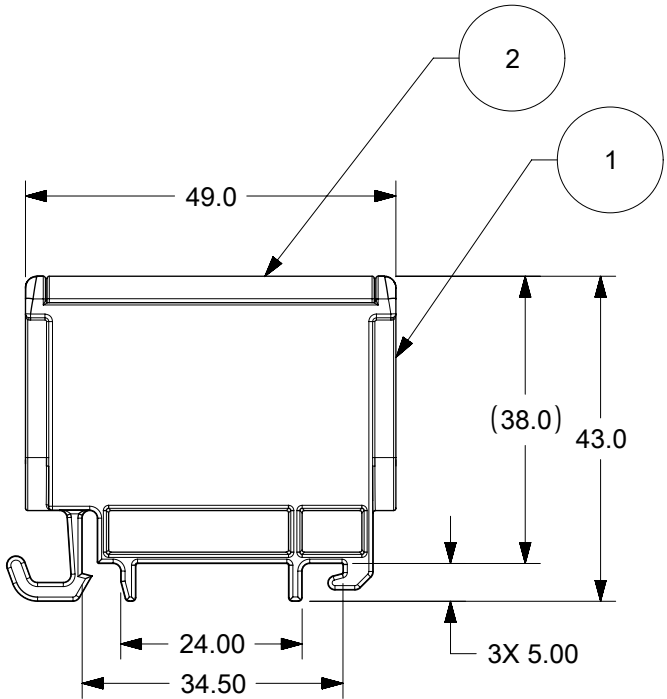
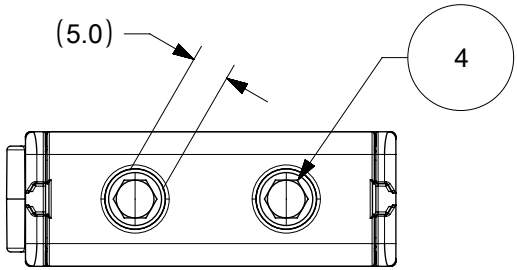


- NOTES:
1. MOUNTING TYPE: DIN RAIL SIZE 35x7.5 mm.
 2. VOLTAGE: 600 V.
 3. CURRENT: Cu 150 A, Al 120 A.
 3. WIRE CROSS-SECTION RANGE:
Cu/Al 6-1/0 AWG (13-53 mm²) STRANDED,
Cu 3x8 AWG (3X8.3mm²) STRANDED,
Cu 2X6 AWG (2X13mm²) STRANDED.
 4. HEAD CAP SCREW WITH 5mm HEXAGON
SOCKET SIZE.
USE A TOOL WITH LENGTH ALLOWING FOR
A FULL SCREW ENGAGEMENT.
 5. RECOMMENDED TIGHTENING TORQUE:
90 lb-in (10Nm).
 6. ALL ELECTRICAL AND MECHANICAL SPECIFICATIONS
ARE PER UL1059 AS NOTED IN MOLEX UL AGENCY
APPROVAL.
 7. THE SUITABILITY OF THESE TERMINALS SHALL BE
DETERMINED IN THE END-USE INVESTIGATION.
 8. AS ENVIRONMENTAL BARRIER DIELECTRIC GREASE
MAY BE PRESENT IN THE WIRING CHAMBER.
ENSURE TO USE THE RECOMMENDED TIGHTENING
TORQUE FOR ALL CONDUCTORS.



2016060613	MX-KE61.3	UCLP 1PL GRN/YLW 150A	GREEN	YELLOW
2016060612	MX-KE61.2	UCLP 1PL GRY/BLU 150A	GREY	BLUE
2016060610	MX-KE61	UCLP 1PL GRY/GRY 150A	GREY	GREY
MATERIAL No.	ENGINEERING No.	DESCRIPTION	HOUSING COLOR	COVER COLOR

4	2	SCREW, SET	ALUMINUM
3	1	CAGE	ALUMINUM
2	1	COVER	POLYAMIDE
1	1	HOUSING	POLYAMIDE
ITEM	QTY	DESCRIPTION	MATERIAL

TOLERANCE	>0.5=3	>=6	>6=30	>30=120	>120=400
ISO 2768-m	±0.1	±0.1	±0.2	±0.3	±0.5

THIS DRAWING CONTAINS INFORMATION THAT IS PROPRIETARY TO MOLEX ELECTRONIC TECHNOLOGIES, LLC AND SHOULD NOT BE USED WITHOUT WRITTEN PERMISSION

RELEASE EC NO: 120665 DRWN: WLEUNG CHKD: DNGUYEN62 APPR: JFMURPHY	2017/08/14 2017/08/15 2017/08/18	GENERAL TOLERANCES (UNLESS SPECIFIED)	DIMENSION UNITS	SCALE	molex®			
		ANGULAR TOL ± °	mm	1:1				
		4 PLACES ±	DRWN BY	DATE				
		3 PLACES ±	WLEUNG	2017/08/14	MX-KE61			
		2 PLACES ± SEE CHART	CHK'D BY	DATE				
		1 PLACE ± SEE CHART	DNGUYEN62	2017/08/15	PRODUCT CUSTOMER DRAWING			
		0 PLACES ±	APPR BY	DATE				
		DRAFT WHERE APPLICABLE MUST REMAIN WITHIN DIMENSIONS	JFMURPHY	2017/08/18	SERIES	MATERIAL NUMBER	CUSTOMER	
			DRAWING SIZE	THIRD ANGLE PROJECTION	201606	SEE CHART		
			B		DOCUMENT NUMBER	DOC TYPE	DOC PART	SHEET NUMBER
					2016060610	PSD	000	1 OF 1

RELEASE STATUS	P1	RELEASE DATE	18.08.2017	19:46:45
----------------	----	--------------	------------	----------

Mouser Electronics

Authorized Distributor

Click to View Pricing, Inventory, Delivery & Lifecycle Information:

Molex:

[201606-0612](#) [201606-0613](#)