

PLEASE CHECK WWW.MOLEX.COM FOR LATEST PART INFORMATION

Part Number:

2002140010

Status:

Active

Overview:

Application Tooling

Description:

Insertion Tool for Impulse Coplanar Module Assemblies (8-pair by 16-Column Assemblies)

Documents:

RoHS Certificate of Compliance (PDF)

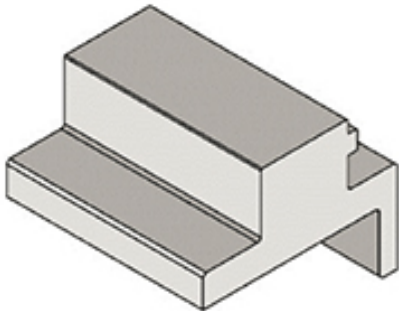
General	
Product Family	Application Tooling
Series	207123
Comments	See Tooling Specification (PDF) Above
Function	Insertion
Geographic Area	Global
Level of Automation	Manual
More Detailed Tech Information	applicationtooling@molex.com
Overview	Application Tooling
Product Name	Impact zX2
Tool Type	Press-Fit Insertion Tool
UPC	191128222679
Warranty Disclaimer	CAUTION: Molex tooling crimp specifications are valid only when used with Molex terminals and tooling manufactured by Molex and sold by Molex or authorized distributors ("Molex Tooling"). When using tooling other than Molex Tooling with Molex specific connector systems listed in our ATS documents, the Molex tooling qualification does not apply and the responsibility for full qualification of the connector system is that of the customer. Molex accepts no liability for connector performance or tooling support where tooling other than Molex Tooling is used or where Molex Tooling is modified.

Material Info

Reference - Drawing Numbers

Application Tooling Documents

ATS-2002140010-001



Series image - Reference only

EU ELV	
Not Reviewed	
EU RoHS	China RoHS
Not Reviewed	
REACH SVHC	
Not Reviewed	
Halogen-Free	
Status	
Not Reviewed	
For more information, please visit <a href="#">Contact US</a>	
China ROHS	Not Reviewed
ELV	Not Reviewed
RoHS Phthalates	Not Reviewed

Search Parts in this Series

207123 Series

PLEASE CHECK WWW.MOLEX.COM FOR LATEST PART INFORMATION

# Mouser Electronics

Authorized Distributor

Click to View Pricing, Inventory, Delivery & Lifecycle Information:

Molex:

200214-0010