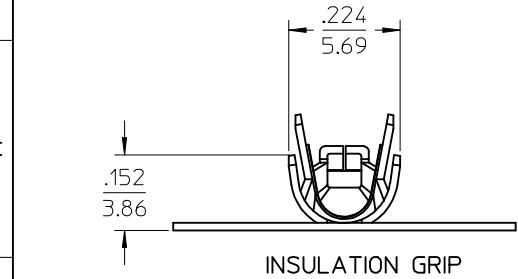
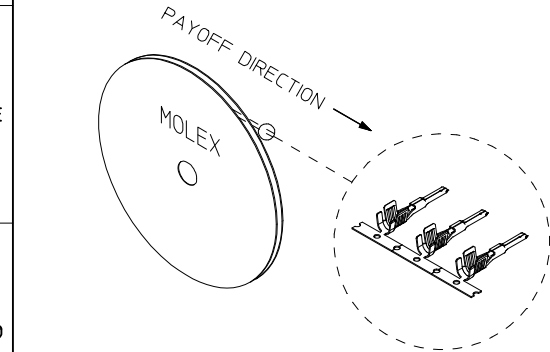
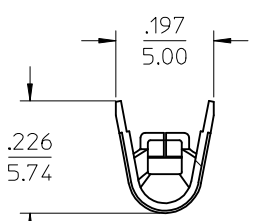


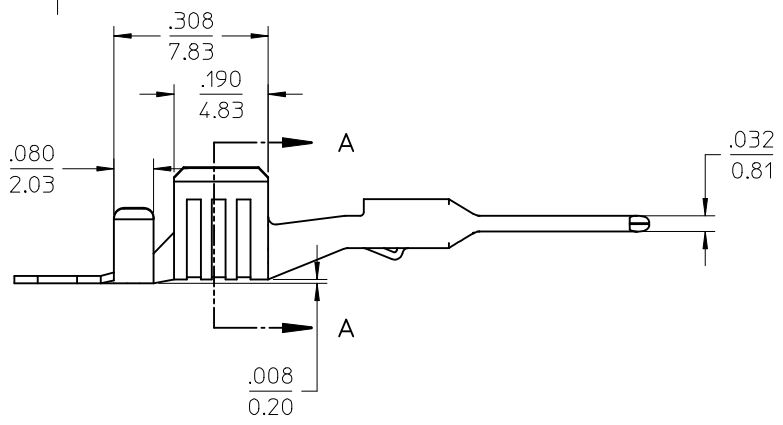
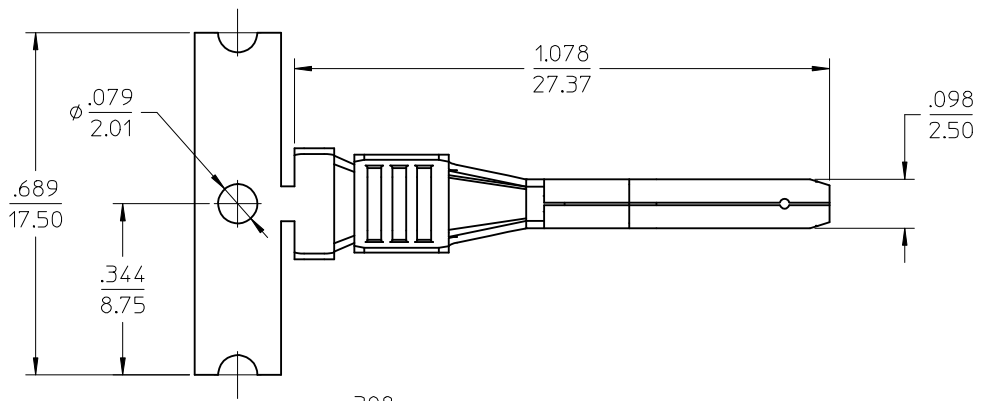
	10	9	8	7	6	5	4	3	2	1
	STRIP MATERIAL NUMBER	LOOSE PIECE MATERIAL NUMBER	AWG SIZE (MM²)	WIRE INSULATION DIAMETER						
F	194310064	194310065	12AWG TW (3.00MM²)	.122"-.134" (3.10MM-3.40MM)						



INSULATION GRIP



Section A-A
CONDUCTOR GRIP

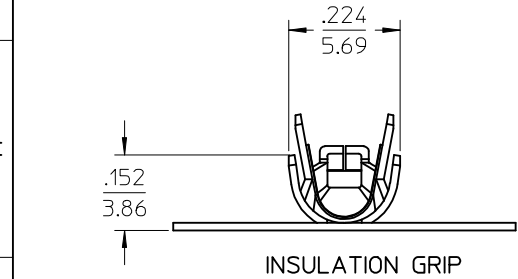
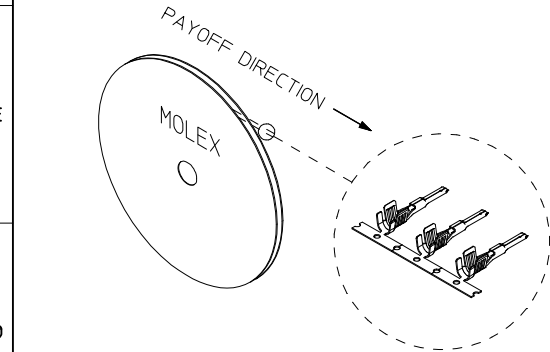


6 INS. GRIP STEP

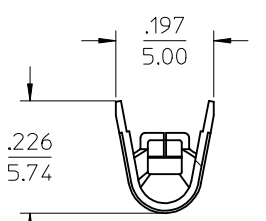
- NOTES:
1. MATERIAL: COPPER ALLOY.
 2. FINISH: PREPLATED AND REFLOWED OVERALL.
100µ TIN OVER 50µ NICKEL, MINIMUM.
 3. DO NOT USE TERMINALS WITH 19433**** PLUG HOUSINGS.
 4. PACKAGING SPECIFICATION: PK-19431-001 FOR LOOSE TERMINALS.
STRIP PARTS ARE REELED 2500 TERMINALS PER REEL.
 5. APPLICATION TOOLING AND CRIMP SPECIFICATIONS: CONSULT FACTORY
 - 6 INSULATION GRIP STEP DIMENSION NOT TO BE ALTERED BY CRIMP PROCESS.
 7. ALL DIMENSIONS ARE REFERENCE.

UPDATE WIRE AWG EC NO: IPG2014-1616 2014/03/13 DRAWN:WLEUNG 2014/03/13 CHKD:BRUPERT 2014/03/30 APPR:BMWOODMAN 2014/03/30			DESCRIPTION REV	QUALITY SYMBOLS	GENERAL TOLERANCES (UNLESS SPECIFIED)		DIMENSION STYLE IN/MM		SCALE 4:1	DESIGN UNITS INCH	THIRD ANGLE PROJECTION		
					mm	INCH	DRAWN BY WLEUNG	DATE 2013/12/12	TITLE MALE PIN TERMINAL, 12AWG TW (3.0MM/2) THIN WALL INSULATION molex				
				4 PLACES	± ---	± ---	CHECKED BY	DATE					
				3 PLACES	± ---	± .010	BRUPERT	2013/12/13					
				2 PLACES	± 0.25	± .02	APPROVED BY		DATE	DOCUMENT NO. SD-19431-004			
				1 PLACE	± 0.5	± ---							
				0 PLACE	± ---	± ---							
		ANGULAR ± 3 °				MATERIAL NO.		SHEET NO.					
		DRAFT WHERE APPLICABLE MUST REMAIN WITHIN DIMENSIONS				SEE CHART		1 OF 1					
						SIZE B	THIS DRAWING CONTAINS INFORMATION THAT IS PROPRIETARY TO MOLEX INCORPORATED AND SHOULD NOT BE USED WITHOUT WRITTEN PERMISSION						

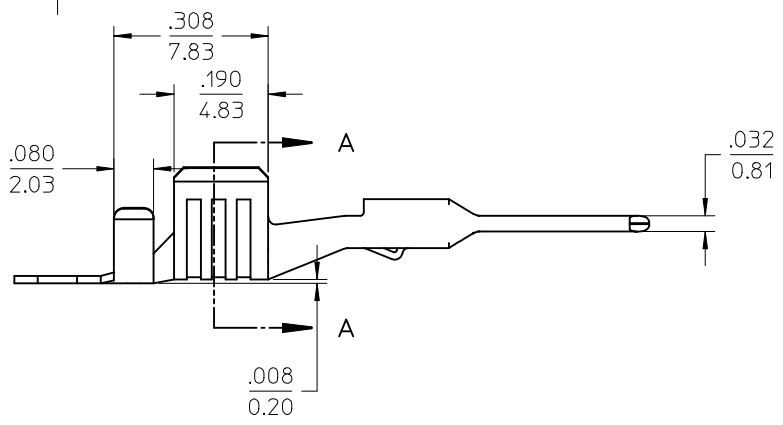
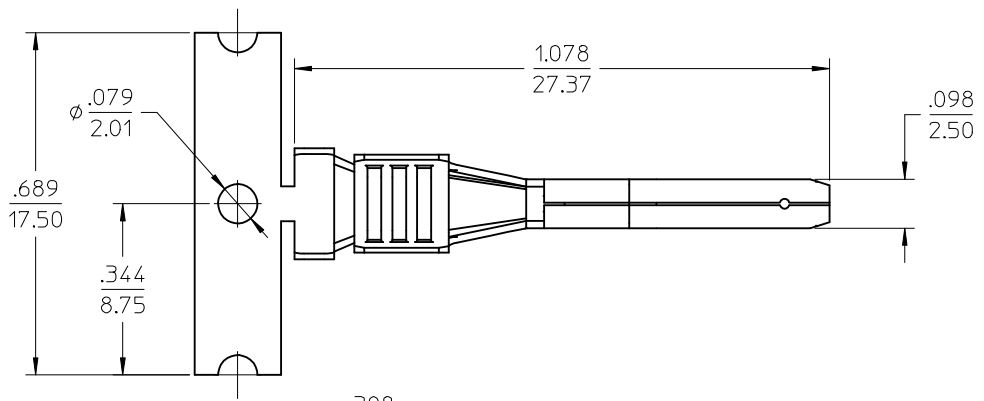
	10	9	8	7	6	5	4	3	2	1
	STRIP MATERIAL NUMBER	LOOSE PIECE MATERIAL NUMBER	AWG SIZE (MM²)	WIRE INSULATION DIAMETER						
F	194310064	194310065	12AWG TW (3.00MM²)	.122"-.134" (3.10MM-3.40MM)						



INSULATION GRIP



Section A-A
CONDUCTOR GRIP



6 INS. GRIP STEP

- NOTES:
1. MATERIAL: COPPER ALLOY.
 2. FINISH: PREPLATED AND REFLOWED OVERALL.
100µ TIN OVER 50µ NICKEL, MINIMUM.
 3. DO NOT USE TERMINALS WITH 19433**** PLUG HOUSINGS.
 4. PACKAGING SPECIFICATION: PK-19431-001 FOR LOOSE TERMINALS.
STRIP PARTS ARE REELED 2500 TERMINALS PER REEL.
 5. APPLICATION TOOLING AND CRIMP SPECIFICATIONS: CONSULT FACTORY
 - 6 INSULATION GRIP STEP DIMENSION NOT TO BE ALTERED BY CRIMP PROCESS.
 7. ALL DIMENSIONS ARE REFERENCE.

UPDATE WIRE AWG EC NO: IPG2014-1616 2014/03/13 DRAWN:WLEUNG 2014/03/13 CHKD:BRUPERT 2014/03/30 APPR:BMWOODMAN 2014/03/30				DESCRIPTION REV		QUALITY SYMBOLS F7=0 F7=0 F7=0		GENERAL TOLERANCES (UNLESS SPECIFIED)				DIMENSION STYLE IN/MM				SCALE 4:1		DESIGN UNITS INCH		THIRD ANGLE PROJECTION			
						mm		INCH		DRAWN BY WLEUNG		DATE 2013/12/12		TITLE MALE PIN TERMINAL, 12AWG TW (3.0MM/2) THIN WALL INSULATION molex									
						4 PLACES		± ---		± ---		CHECKED BY BRUPERT								DATE 2013/12/13			
						3 PLACES		± ---		± .010		APPROVED BY								DATE			
						2 PLACES		± 0.25		± .02		MATERIAL NO. SEE CHART		DOCUMENT NO. SD-19431-004		SHEET NO. 1 OF 1							
						1 PLACE		± 0.5		± ---													
						0 PLACE		± ---		± ---													
						ANGULAR ± 3 ° DRAFT WHERE APPLICABLE MUST REMAIN WITHIN DIMENSIONS																	
B												SIZE B		THIS DRAWING CONTAINS INFORMATION THAT IS PROPRIETARY TO MOLEX INCORPORATED AND SHOULD NOT BE USED WITHOUT WRITTEN PERMISSION									

Mouser Electronics

Authorized Distributor

Click to View Pricing, Inventory, Delivery & Lifecycle Information:

Molex:

19431-0064