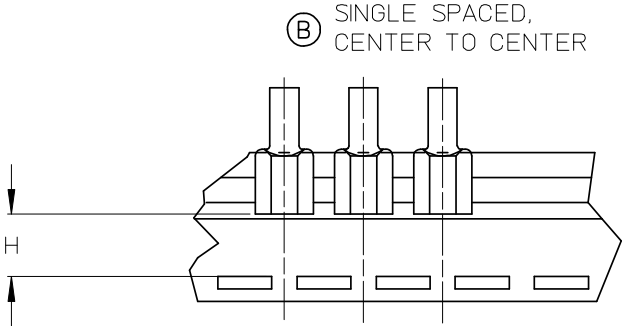
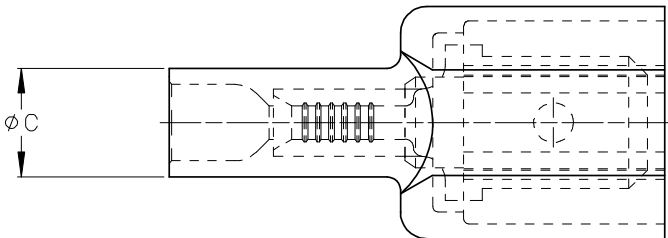
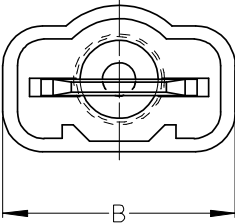
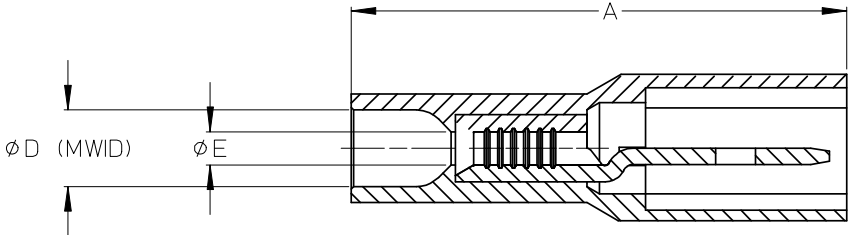


10		9		8		7		6		5		4		3		2		19004	
ASSEMBLY NUMBER		TAPE NUMBER		ITEM DESCRIPTION								DIMENSIONS							
MATERIAL NUMBER	ENGINEERING NUMBER	MATERIAL NUMBER	TAPE ENG. NUMBER	COLOR	WIRE GAUGE			TAB SIZE			'A' MAX	'B' MAX	'C' MAX	'D' MIN	'E' MIN	'H' REF			
190040001	AA-2260	190040004	AA-2260T	RED	22-18 AWG (0.38-0.96mm <sup>2</sup> )			.250x.032 (6.35x0.81)			.97/24.6	.45/11.4	.23/5.8	.145/3.68	(B).054/1.37	.48/12.2			
190040005	BB-2262	190040008	BB-2262T	BLUE	16-14 AWG (1.23-1.94 mm <sup>2</sup> )			.250x.032 (6.35x0.81)			.97/24.6	.45/11.4	.23/5.8	.170/4.32	.083/2.11	.48/12.2			



TAPE MOUNTING DETAIL



- (B) NOTES:
1. TERMINAL MATERIAL: BRASS
  2. TERMINAL PLATING: ZINC CHROMATE
  3. HOUSING: 6/6 NYLON
  4. MWID: MAXIMUM WIRE INSULATION DIAMETER
  5. TAB DIMENSIONS CONFORM TO UL310 SPECIFICATIONS.
  6. ASSEMBLY IS ROHS COMPLIANT

REDRAW, MATERIALS EC NO: ETC2007-0081 2008/01/28 DRWN:EHILE CHKD:JMACNEIL 2008/01/28 APPR:JMACNEIL 2008/02/13	QUALITY SYMBOLS =0 =0	GENERAL TOLERANCES (UNLESS SPECIFIED)		DIMENSION STYLE IN/MM (B)		SCALE 4:1	DESIGN UNITS INCH	THIRD ANGLE PROJECTION			
		4 PLACES	± --- ± ---	DRAWN BY EMF	DATE 1993/06/25	TITLE FULLY INSULATED MALE COUPLER, INSULKRIMP					
		3 PLACES	± --- ± ---	CHECKED BY	DATE						
		2 PLACES	± --- ± ---	APPROVED BY	DATE	MOLEX INCORPORATED					
		1 PLACE	± --- ± ---	MATERIAL NO. SEE CHART		DOCUMENT NO. SD-19004-001		SHEET NO. 1 OF 1			
DRAFT WHERE APPLICABLE MUST REMAIN WITHIN DIMENSIONS		ANGULAR ± --- °		THIS DRAWING CONTAINS INFORMATION THAT IS PROPRIETARY TO MOLEX INCORPORATED AND SHOULD NOT BE USED WITHOUT WRITTEN PERMISSION							

# Mouser Electronics

Authorized Distributor

Click to View Pricing, Inventory, Delivery & Lifecycle Information:

Molex:

19004-0029