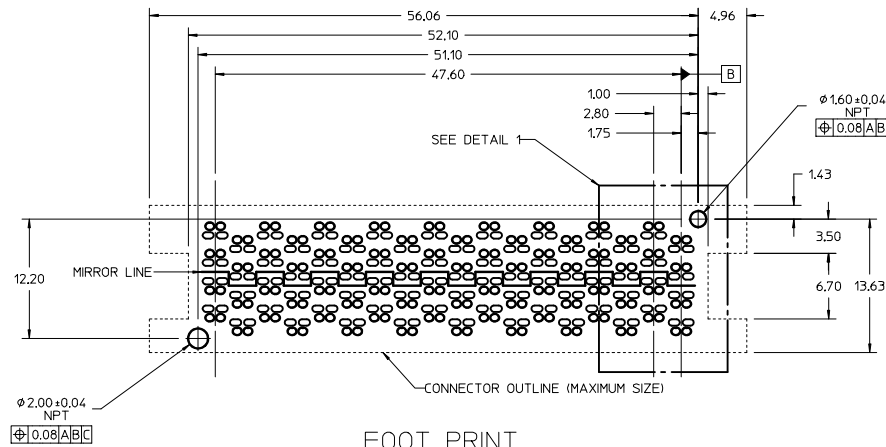


NOTES:

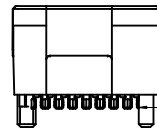
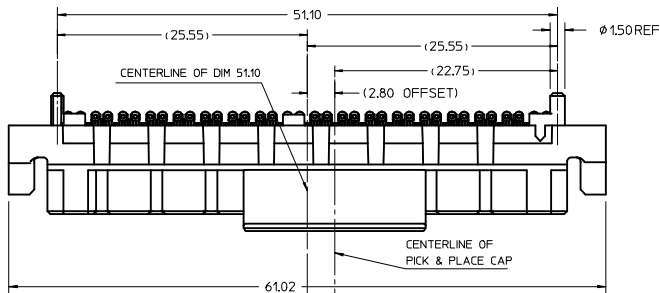
- HOUSING MATERIAL: LCP, GLASS FILLED, UL 94V-0, BLACK
CONTACT MATERIAL: HIGH PERFORMANCE COPPER ALLOY
SOLDER CHARGE: LEAD FREE SOLDER ALLOY
- FINISH:
CONTACTS: SELECT GOLD: 30 MICHES MIN ON CONTACT AREA.
SELECTIVE TIN: 100 MICHES MIN ON SOLDERABLE PORTION
OF SOLDER TAILS, OVER 50 MICHES MIN NICKEL OVERALL.
- PRODUCT SPECIFICATION: PS-170807-0001
- PACKAGING SPECIFICATION: PK-170807-002
- APPLICATION SPECIFICATION: AS-170807-0001



FOOT PRINT

FOOT PRINT NOTES:

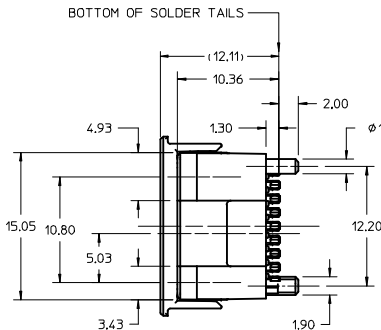
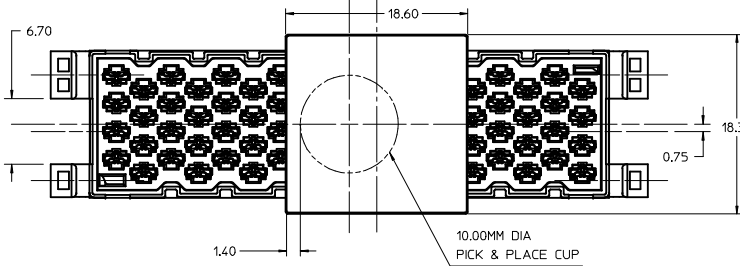
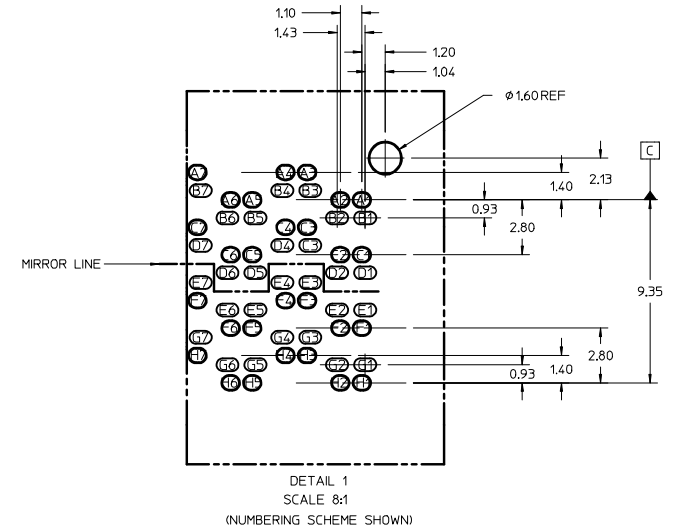
- DATUM -A- IS THE TOP OF THE PCB.
- ALL DIMENSIONS ARE BASICS.
- ROW A, C, F, AND H PADS (SIGNAL PADS) ARE COPPER DEFINED.
- ROW B, D, E, AND G PADS (SHIELD PADS) ARE SOLDER MASK DEFINED.



EXTREME BOTTOM OF TERMINAL (NOT THE SOLDER CHARGE). THE BOTTOM OF ALL TERMINALS MUST BE COPLANAR TO WITHIN 0.15mm TOTAL.

COPLANARITY REQUIREMENT

(SCALE 3:1)



PROPOSED EC NO: UCP2016-1699 2015/10/21 DRW:SKANG CHKD:JESSIECHUA 2015/11/03 APPR:SHONG 2015/11/03	DESCRIPTION REV	QUALITY SYMBOLS ▽=0 ▽=0 ▽=0	GENERAL TOLERANCES (UNLESS SPECIFIED) <table><tr><td></td><td>mm</td><td>INCH</td></tr><tr><td>4 PLACES</td><td>± 0.15</td><td>± 0.006</td></tr><tr><td>3 PLACES</td><td>± 0.25</td><td>± 0.010</td></tr><tr><td>2 PLACES</td><td>± 0.38</td><td>± 0.015</td></tr><tr><td>1 PLACE</td><td>± 0.51</td><td>± 0.020</td></tr></table>			mm	INCH	4 PLACES	± 0.15	± 0.006	3 PLACES	± 0.25	± 0.010	2 PLACES	± 0.38	± 0.015	1 PLACE	± 0.51	± 0.020	DIMENSION STYLE MM ONLY		SCALE 4:1	DESIGN UNITS METRIC	THIRD ANGLE PROJECTION	
						mm	INCH																		
					4 PLACES	± 0.15	± 0.006																		
					3 PLACES	± 0.25	± 0.010																		
					2 PLACES	± 0.38	± 0.015																		
					1 PLACE	± 0.51	± 0.020																		
					DRAWN BY SKANG		DATE 2015/10/21		TITLE PLUG 4X18, 8MM, 85 OHMS NEOSCALE																
					CHECKED BY JESSIECHUA		DATE		MOLEX MOLEX INCORPORATED																
					APPROVED BY SHONG		DATE 2015/11/03																		
					MATERIAL NO. 1708070045		DOCUMENT NO. SD-170807-0045						SHEET NO. 1 OF 1												
DRAFT WHERE APPLICABLE MUST REMAIN WITHIN DIMENSIONS		THIS DRAWING CONTAINS INFORMATION THAT IS PROPRIETARY TO MOLEX INCORPORATED AND SHOULD NOT BE USED WITHOUT WRITTEN PERMISSION																							

Mouser Electronics

Authorized Distributor

Click to View Pricing, Inventory, Delivery & Lifecycle Information:

Molex:

170807-0045