

F

E

D

C

B

A

F

E

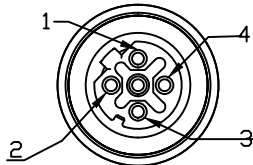
D

C

B

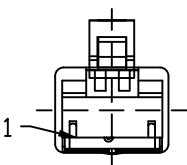
A

FRONT VIEW – MALE M12

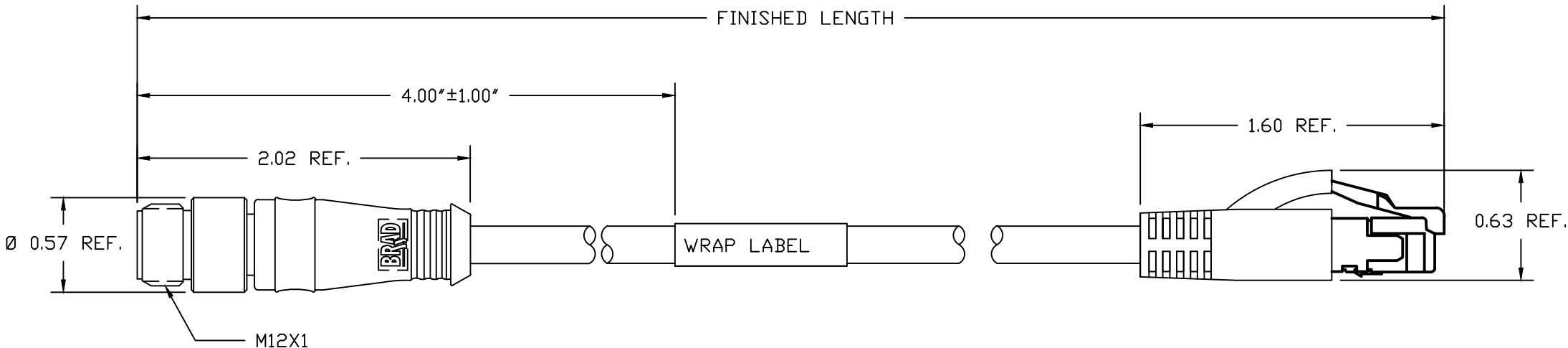


1-WHITE/ORANGE
2-WHITE/GREEN
3-ORANGE
4-GREEN

FRONT VIEW – MALE RJ45



1-WHITE/ORANGE
2-ORANGE
3-WHITE/GREEN
6-GREEN



NOTES:

MECHANICAL

RJ45
PLUG: CLEAR POLYCARBONATE
BOOT: BLACK PVC

M12 CONNECTOR

INSERT: BLACK PUR
CONTACT: GOLD/NICKEL OVER COPPER ALLOY
COUPLING NUT: NICKEL PLATED BRASS
MOLDED BODY: BLACK PUR

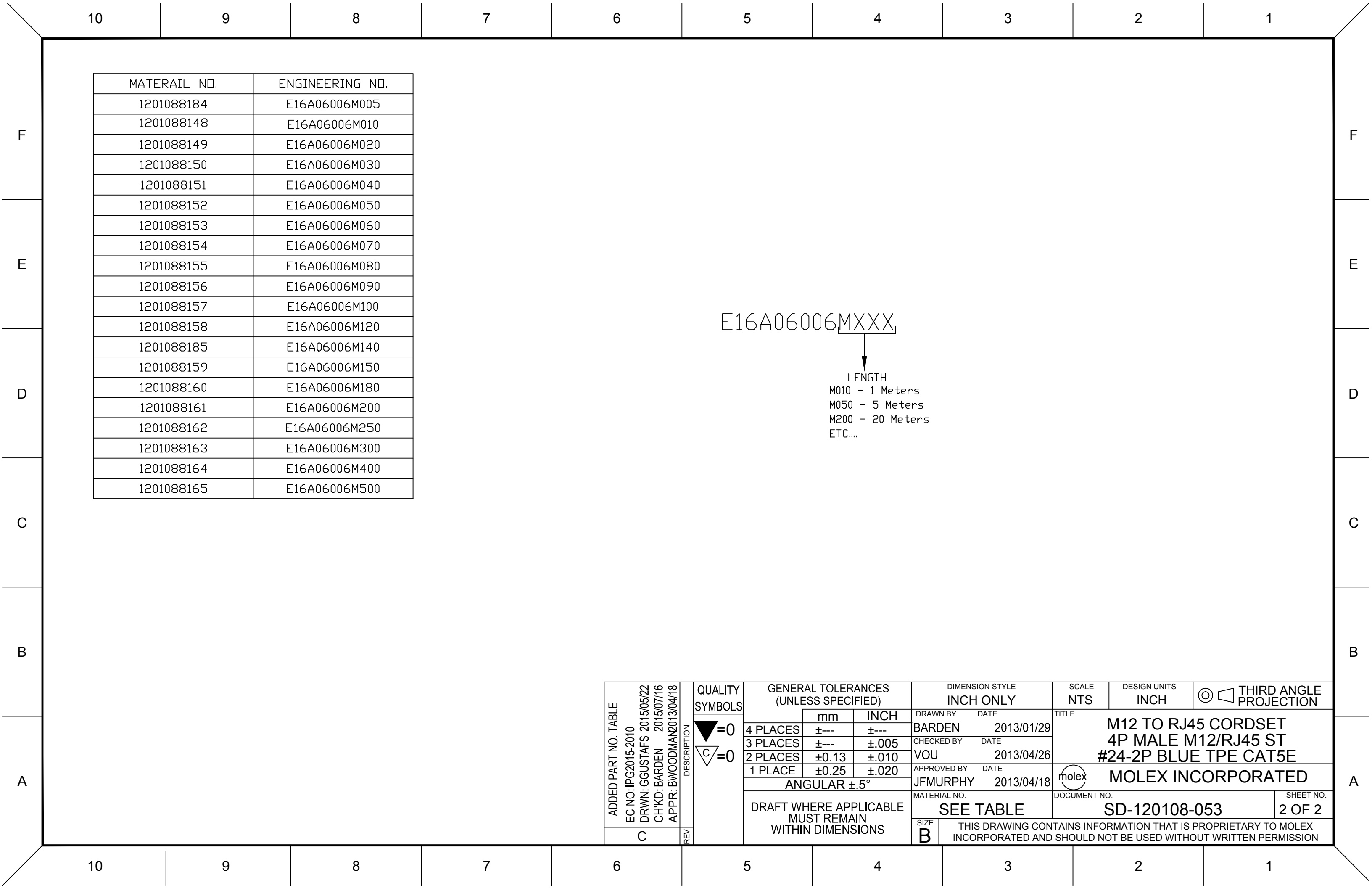
CABLE: 24 AWG 2 PAIR CONDUCTORS BLUE TPE JACKET
UL LISTED: CMR
CSA LISTED: CMG
BELDEN P/N: YM53146006R

WRAP LABEL: MARKED WITH P/N, DATE CODE, VOLTAGE & AMPERAGE

ELECTRICAL

ACCORDING TO CAT5e
VOLTAGE RATING: 30V AC/DC
AMPERAGE: 1.5A

ADDED PART NO. TABLE EC NO: IPG2015-2010 DRWN: GGUSTAFS 2015/05/22 CHKD: BARDEN 2015/07/16 APPR: BWOODMAN2013/04/18	DESCRIPTION	QUALITY SYMBOLS <div>▽=0</div> <div>▽C=0</div>	GENERAL TOLERANCES (UNLESS SPECIFIED)			DIMENSION STYLE INCH ONLY		SCALE NTS	DESIGN UNITS INCH	THIRD ANGLE PROJECTION <div>⊙</div> <div>□</div>		
				mm	INCH	DRAWN BY	DATE	TITLE M12 TO RJ45 CORDSET 4P MALE M12/RJ45 ST #24-2P BLUE TPE CAT5E				
			4 PLACES	±---	±---	BARDEN	2013/01/29					
			3 PLACES	±---	±.005	CHECKED BY	DATE	MOLEX INCORPORATED				
			2 PLACES	±0.13	±.010	VOU	2013/04/26					
			1 PLACE	±0.25	±.020	APPROVED BY	DATE	DOCUMENT NO. SD-120108-053				
			ANGULAR ±.5°			JFMURPHY	2013/04/18					
			DRAFT WHERE APPLICABLE MUST REMAIN WITHIN DIMENSIONS			MATERIAL NO. SEE TABLE		SHEET NO. 1 OF 2				
						SIZE B	THIS DRAWING CONTAINS INFORMATION THAT IS PROPRIETARY TO MOLEX INCORPORATED AND SHOULD NOT BE USED WITHOUT WRITTEN PERMISSION					
C	REV											



Mouser Electronics

Authorized Distributor

Click to View Pricing, Inventory, Delivery & Lifecycle Information:

Molex:

[1201088150](#) [1201088148](#) [1201088149](#) [1201088151](#) [1201088152](#) [1201088153](#) [1201088154](#) [1201088155](#)
[1201088156](#) [1201088157](#)