

F

E

D

C

B

A

F

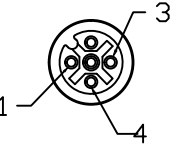
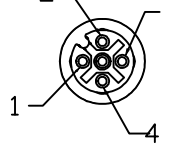
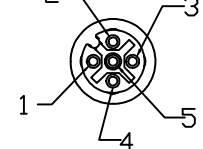
E

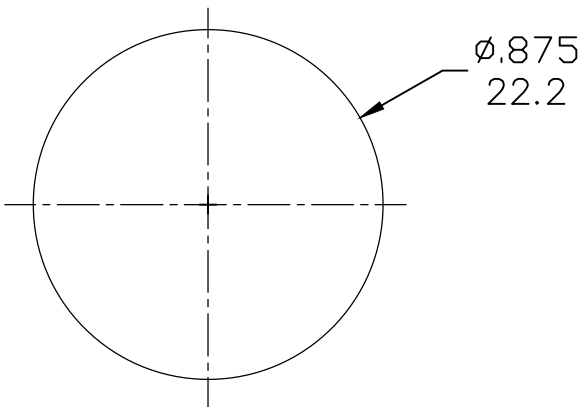
D

C

B

A

FACE VIEW - FEMALE INSERT		
3P	4P	5P
		
1-BROWN 3-BLUE 4-BLACK	1-BROWN 2-WHITE 3-BLUE 4-BLACK	1-BROWN 2-WHITE 3-BLUE 4-BLACK 5-GRAY

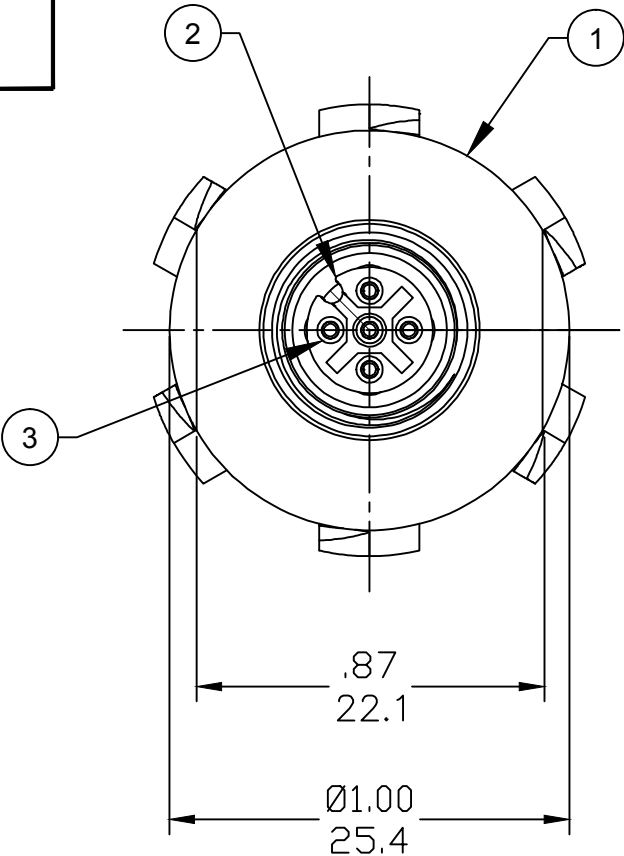


REF. KNOCKOUT HOLE

- NOTES:
- 1. MATERIAL: AS NOTED
  - 2. FINISH: AS NOTED
  - 3. ELECTRICAL:  
VOLTAGE: 250V  
CURRENT: 4A
  - 4. TEMP RATING: -25°TO +80°C
  - 5. PROTECTION: IP67 (WHEN MATED)
  - 6. COUPLING THREAD: M12 X 1
  - 7. CSA RECOGNIZED PER FILE: LR6837
  - 8. ALL DIMS ARE FOR REFERENCE  
UNLESS NOTED OTHERWISE

8	FLAG LABEL	VINYL	BLACK/YELLOW
7	LOCK NUT	STEEL	ZINC PLATED
6	POTTING MATERIAL	EPOXY	
5	WIRE, 22 AWG UL 1061	PVC INSULATION	SEE FACE VIEW
4	O-RING	VITON	RED
3	CONTACT SOCKET	COPPER ALLOY	GOLD PLATED
2	FEMALE INSERT	NYLON	BLACK
1	RECEPTACLE SHELL	ST. STEEL	PASSIVATED
ITEM	DESCRIPTION	MATERIAL	FINISH

CABLE LENGTH TOLERANCES	
>.3M [1FT]:	+19mm-0 [ +.75in-0]
.3 - .9M [1 - 3FT]:	+44.5mm-0 [+1.75in-0]
.9 - 1.8M [3 - 6FT]:	+55.6mm-0 [+2.19in-0]
1.8 - 3.7M [6 - 12FT]:	+88.9mm-0 [+3.50in-0]
3.7 - 7.3M [12 - 24FT]:	+165.1mm-0 [+6.50in-0]
7.3-14.6M [24 - 48FT]:	+317.5mm-0 [+12.50in-0]
14.6 - 30.5M [48-100FT]:	+622.3mm-0 [+24.50in-0]
OVER 30M [100FT]	+2% OF FINISHED LENGTH



PART NUMBER LEGEND

WR4000A18M0108

POLES

WIRE TYPE  
22 AWG PVC

SS SHELL

FINISHED LENGTH:  
M005= 0.5 METER  
M010= 1 METER  
M100= 10 METER

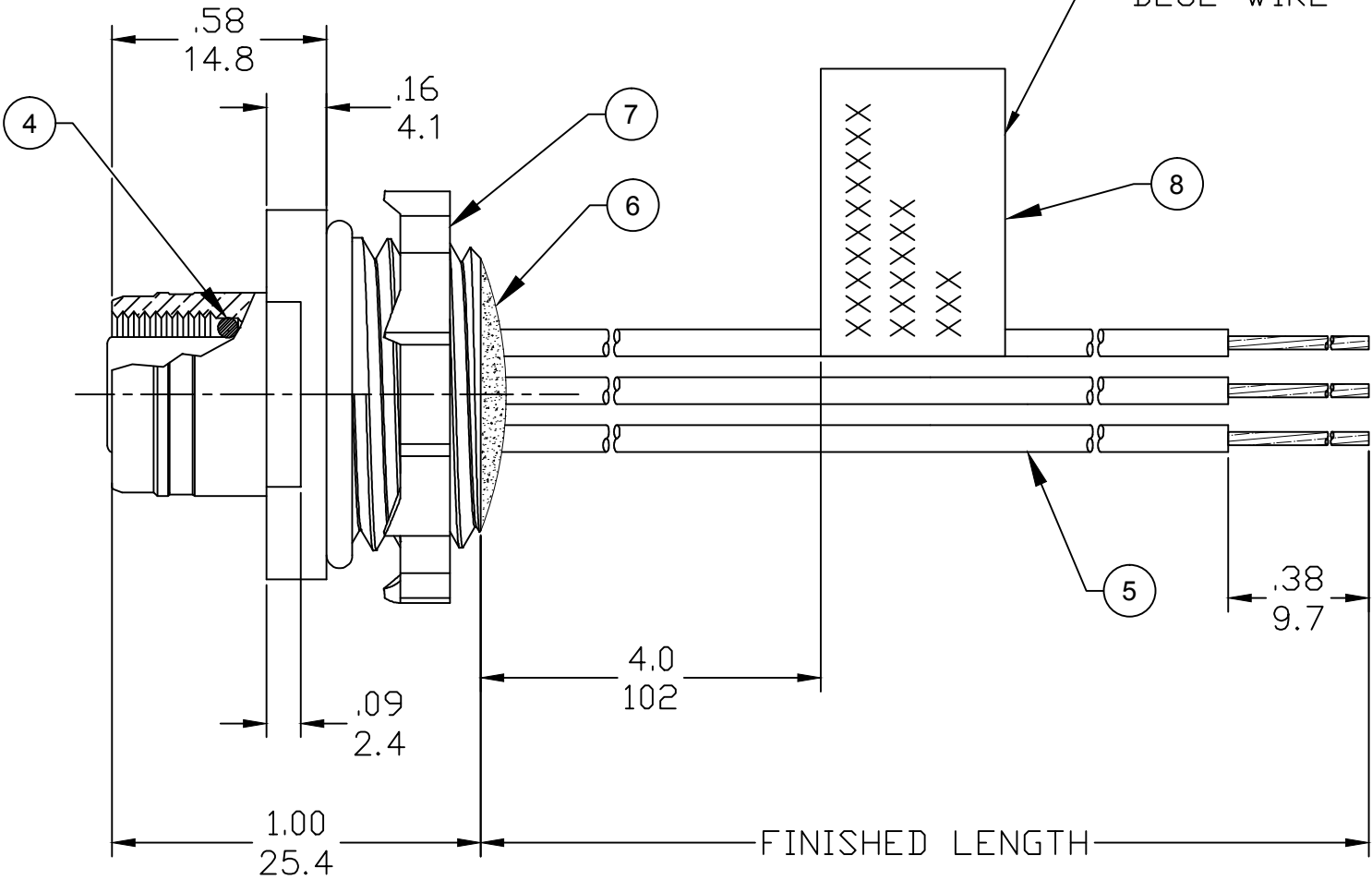


CHART	PART NO.	ENGINEERING NO.	FINISHED LENGTH	POLES
	1200840064	WR4000A18M0108	1.0M [3'3"]	4
	1200840023	WR5000A18M0108	1.0M [3'3"]	5

RELEASED EC NO: IPG2018-0167 DRWN: RSTONE 2017/09/19 CHKD: M ZIELIN APPR: BWOODMAN2017/10/04	DESCRIPTION REV A	QUALITY SYMBOLS ▽=0 ▽C=0	GENERAL TOLERANCES (UNLESS SPECIFIED)			DIMENSION STYLE IN/MM		SCALE ---	DESIGN UNITS INCH	THIRD ANGLE PROJECTION						
				mm	INCH	DRAWN BY RSTONE	DATE 2017/09/19	TITLE M12 U-LOCK RECEPT ASSY 3, 4, 5P F/FR 1/2 NPT								
			4 PLACES	±---	±---	CHECKED BY M ZIELIN	DATE ---	MOLEX INCORPORATED								
			3 PLACES	±---	±---	APPROVED BY BWOODMAN	DATE 2017/10/04	DOCUMENT NO. SD-120084-181								
			2 PLACES	±---	±---	MATERIAL NO. SEE CHART		SHEET NO. 1 OF 1								
			1 PLACE	±---	±---	SIZE B		THIS DRAWING CONTAINS INFORMATION THAT IS PROPRIETARY TO MOLEX INCORPORATED AND SHOULD NOT BE USED WITHOUT WRITTEN PERMISSION								
			ANGULAR ±---°													
			DRAFT WHERE APPLICABLE MUST REMAIN WITHIN DIMENSIONS													

6

5

4

3

2

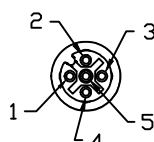
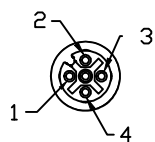
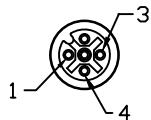
1

## FACE VIEW - FEMALE INSERT

3P

4P

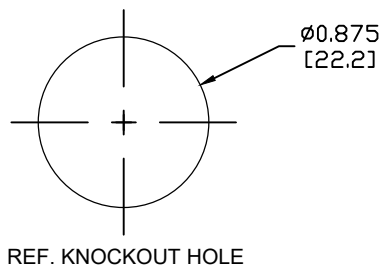
5P



1-BROWN  
3-BLUE  
4-BLACK

1-BROWN  
2-WHITE  
3-BLUE  
4-BLACK

1-BROWN  
2-WHITE  
3-BLUE  
4-BLACK  
5-GRAY



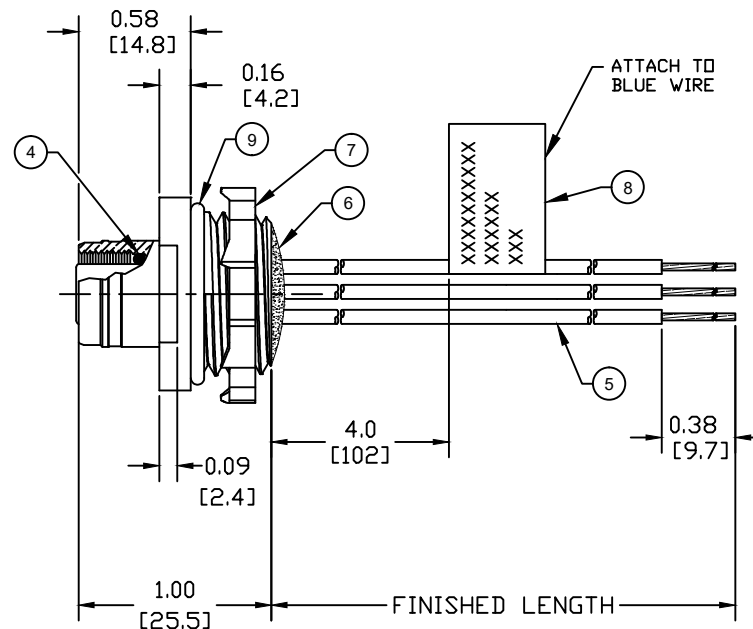
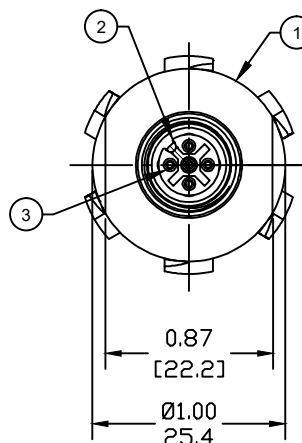
CABLE LENGTH TOLERANCES  
>.3M [1FT]: +19mm-0 [+1.75in-0]  
.3 - .9M [1 - 3FT]: +44.5mm-0 [+1.75in-0]  
.9 - 1.8M [3 - 6FT]: +55.6mm-0 [+2.19in-0]  
1.8 - 3.7M [6 - 12FT]: +88.9mm-0 [+3.50in-0]  
3.7 - 7.3M [12 - 24FT]: +165.1mm-0 [+6.50in-0]  
7.3-14.6M [24 - 48FT]: +317.5mm-0 [+12.50in-0]  
14.6 - 30.5M [48-100FT]: +622.3mm-0 [+24.50in-0]  
OVER 30M [100FT] +2% OF FINISHED LENGTH

## PART NUMBER LEGEND

WR4000A18M0108

POLES

SS SHELL

WIRE TYPE  
22 AWG PVCFINISHED LENGTH:  
M005= 0.5 METER  
M010= 1 METER  
M100= 10 METER

## NOTES:

1. MATERIAL: AS NOTED
2. FINISH: AS NOTED
3. ELECTRICAL:  
VOLTAGE: 250V  
CURRENT: 4A
4. TEMP RATING: -25°TO +80°C
5. PROTECTION: IP67 (WHEN MATED)
6. COUPLING THREAD: M12 X 1
7. CSA RECOGNIZED PER FILE: LR6837
8. ALL DIMS ARE FOR REFERENCE  
UNLESS NOTED OTHERWISE

PART NO.	ENGINEERING NO.	FINISHED LENGTH	POLES
1200840025	WR5000A16C300	0.3M [1'0"]	5
1200840023	WR5000A18M0108	1.0M [3'3"]	5

ITEM	DESCRIPTION	MATERIAL	FINISH
9	GASKET	BUNA-N	BLACK
8	FLAG LABEL	VINYL	BLACK/YELLOW
7	LOCK NUT	STEEL	ZINC PLATED
6	POTTING MATERIAL	EPDXY	
5	WIRE, 22 AWG UL 1061	PVC INSULATION	SEE FACE VIEW
4	O-RING	VITON	RED
3	CONTACT SOCKET	COPPER ALLOY	GOLD PLATED
2	FEMALE INSERT	NYLON	BLACK
1	RECEPTACLE SHELL	ST. STEEL	PASSIVATED

RELEASE  
EC NO: IGC2020-0011  
DRWN: JCAPPOZZ 2019/08/01  
CHKD: RSTONE 2019/08/01  
APPR: BWOODMAN 2019/08/15

QUALITY  
SYMBOLS

▽=0  
▽=0

GENERAL TOLERANCES  
(UNLESS SPECIFIED)

	mm	INCH
4 PLACES	±---	±---
3 PLACES	±---	±.005
2 PLACES	±0.05	±.010
1 PLACE	±0.10	±---

ANGULAR ± 5°

DRAFT WHERE APPLICABLE  
MUST REMAIN  
WITHIN DIMENSIONS

DIMENSION STYLE  
INCH ONLY

DRAWN BY DATE  
JCAPPOZZ 2019/08/01  
CHECKED BY DATE  
RSTONE 2019/08/01  
APPROVED BY DATE  
BWOODMAN 2019/08/15

SCALE  
NTSDESIGN UNITS  
INCHTHIRD ANGLE  
PROJECTION

TITLE  
M12 U-LOCK RECEPT ASSY  
3, 4, 5P F/FR 1/2 NPT  
----

MOLEX INCORPORATED

MATERIAL NO.  
SEE P/N CHART

DOCUMENT NO.  
SD-120084-182

SHEET NO.  
1 OF 1

SIZE  
A

THIS DRAWING CONTAINS INFORMATION THAT IS PROPRIETARY TO MOLEX  
INCORPORATED AND SHOULD NOT BE USED WITHOUT WRITTEN PERMISSION

6

5

4

3

2

1

# Mouser Electronics

Authorized Distributor

Click to View Pricing, Inventory, Delivery & Lifecycle Information:

Molex:

1200840043