

6

5

4

3

2

1

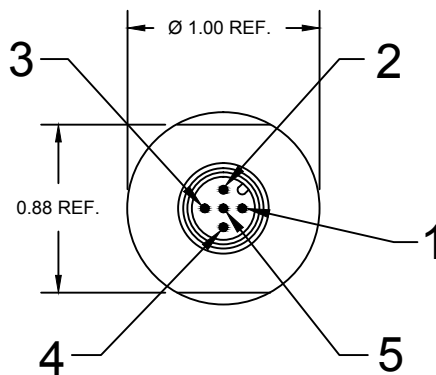
E

D

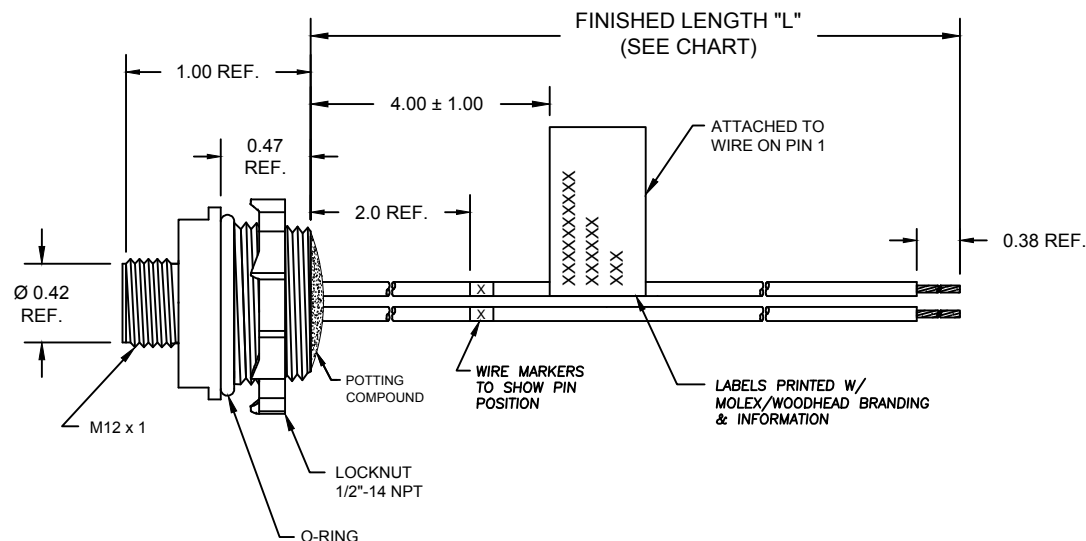
C

B

A



FACE VIEW - MALE



1	BLUE
2	BLUE
3	WHITE/BLUE
4	BLUE
5	GREEN

SPECIFICATIONS:

SHELL MATERIAL: BLACK ANODIZED ALUMINUM
CONTACT MATERIAL: GOLD/NICKEL OVER COPPER ALLOY
INSERT MATERIAL: BLACK NYLON
LOCKNUT: ZINC-PLATED STEEL
O-RING: BLACK NITRILE



WIRES: #18-1, PVC LEADS

ASSEMBLY RATING: 250V, 4A

ENVIRONMENTAL: -20°C TO 105°C
IP67 WHEN MATED

AGENCY: UL LISTED

MOLEX SAP P/N#	ENGINEERING P/N#	"L" (Meters)	"L" (INCH)	TOLERANCE (INCH)
1200700498	8R5006AB7M020N	2.0 M	78.74"	+3.50"/-0.00"
1200700500	8R5006AB7M040N	4.0 M	157.48"	+6.50"/-0.00"

A20110637 RELEASE EC NO: WNA2011-0422 DRWN: VOU 2011/01/28 CHKD: LHARTMAN APPR: JFMURPHY 2012/03/20	DESCRIPTION REV	QUALITY SYMBOLS =0 =0	GENERAL TOLERANCES (UNLESS SPECIFIED)		DIMENSION STYLE INCH ONLY		SCALE 1:1	DESIGN UNITS INCH	 THIRD ANGLE PROJECTION	
				mm	INCH	DRAWN BY DATE VOU 2011/01/28		TITLE M12 MICRO-CHANGE RECEIPT 5P MR 1/2 NPT MOUNT #18-1 PVC WIRES		
			4 PLACES	±---	±---	CHECKED BY DATE LHARTMAN 2012/02/17				
			3 PLACES	±---	±.005	APPROVED BY DATE JFMURPHY 2012/03/20		 MOLEX INCORPORATED		
			2 PLACES	±---	±.010					
			1 PLACE	±---	±.020	MATERIAL NO.		DOCUMENT NO.		SHEET NO.
			ANGULAR ±1/2°			SEE CHART		SD-120070-039		1 OF 1
			DRAFT WHERE APPLICABLE MUST REMAIN WITHIN DIMENSIONS			SIZE A		THIS DRAWING CONTAINS INFORMATION THAT IS PROPRIETARY TO MOLEX INCORPORATED AND SHOULD NOT BE USED WITHOUT WRITTEN PERMISSION		

Mouser Electronics

Authorized Distributor

Click to View Pricing, Inventory, Delivery & Lifecycle Information:

Molex:

1200700500