

PLEASE CHECK WWW.MOLEX.COM FOR LATEST PART INFORMATION

Part Number: **0643251366**
Status: **Active**
Overview: CMC and CMX Sealed, Hybrid, Modular Connectors
Description: Single Wire Seals for CP 2.80 Terminals, Blue

Documents:

Drawing (PDF)	Application Specification AS-98420-001-001 (PDF)
Product Specification 643270001-PS-000 (PDF)	Application Specification AS-98420-001-CH-001 (PDF)
Application Specification AS-560065-001-001 (PDF)	Application Specification AS-98420-001-FR-001 (PDF)
Application Specification AS-560065-001-CH-001 (PDF)	Application Specification AS-98420-001-SP-001 (PDF)
Application Specification AS-560065-001-FR-001 (PDF)	Application Specification AS-98420-003-001 (PDF)
Application Specification AS-64318-002-001 (PDF)	Application Specification AS-98420-003-CH-001 (PDF)
Application Specification AS-64318-002-CH-001 (PDF)	Application Specification AS-98420-003-FR-001 (PDF)
Application Specification AS-64318-002-FR-001 (PDF)	Datasheet (PDF)
Application Specification AS-64318-002-SP-001 (PDF)	RoHS Certificate of Compliance (PDF)
Application Specification AS-64327-001-001 (PDF)	

General

Product Family	Accessories
Series	64325
Application	Automotive
Component Type	Wire Seal
Overview	CMC and CMX Sealed, Hybrid, Modular Connectors
Product Name	CMC
UPC	884982286030

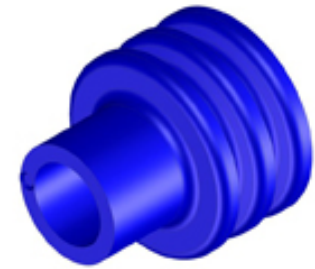
Physical

Circuits (Loaded)	0
Circuits (maximum)	0
Color - Resin	Blue
Net Weight	0.125/g
Packaging Type	Carton

Material Info

Reference - Drawing Numbers

Application Specification	AS-560065-001-001, AS-560065-001-CH-001, AS-560065-001-FR-001, AS-64318-002-001, AS-64318-002-CH-001, AS-64318-002-FR-001, AS-64318-002-SP-001, AS-64327-001-001, AS-98420-001-001, AS-98420-001-CH-001, AS-98420-001-FR-001, AS-98420-001-SP-001, AS-98420-003-001, AS-98420-003-CH-001, AS-98420-003-FR-001
Product Specification	643270001-PS-000
Sales Drawing	SD-31301-053-001, SD-64325-006-001



Series image - Reference only

EU ELV

Compliant

EU RoHS

Compliant

REACH SVHC

Not Contained Per -
D(2021)4569-DC (8
July 2021)

Halogen-Free

Status

Not Relevant

For more information, please visit [Contact US](#)

China ROHS

ELV

RoHS Phthalates

China RoHS

Not Relevant

Compliant

Not Contained

Search Parts in this Series

64325 Series

Use With

64324 CMC CP Terminals

PLEASE CHECK WWW.MOLEX.COM FOR LATEST PART INFORMATION

Mouser Electronics

Authorized Distributor

Click to View Pricing, Inventory, Delivery & Lifecycle Information:

[Molex:](#)

[64325-1366](#)