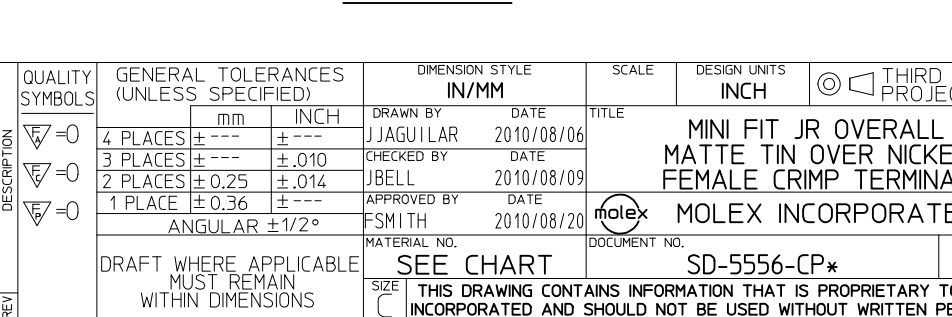
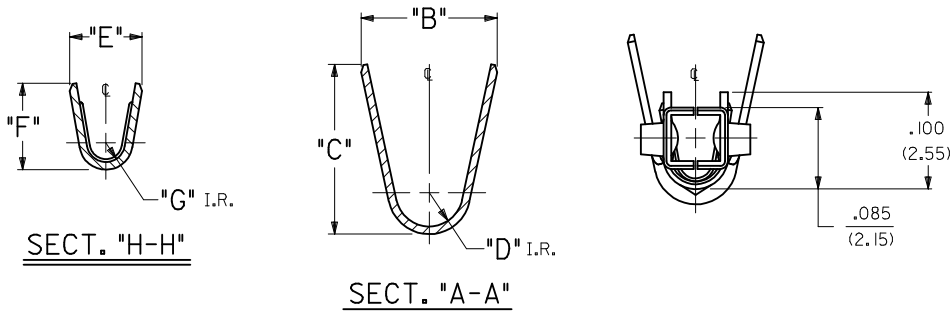
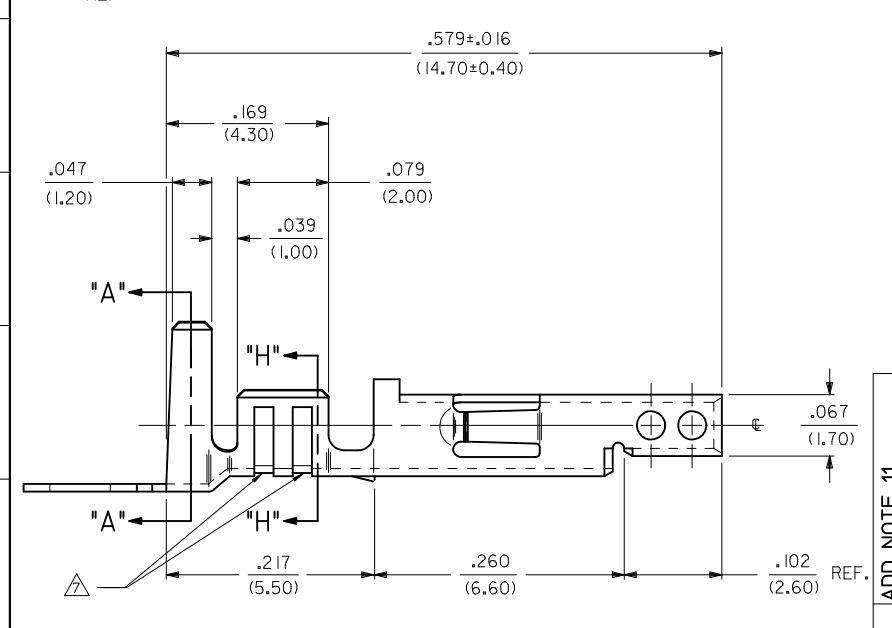
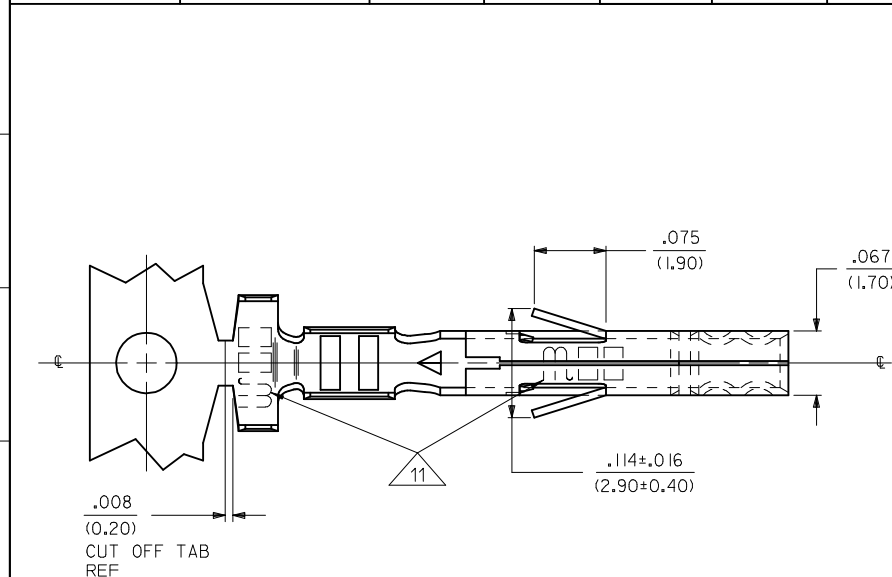
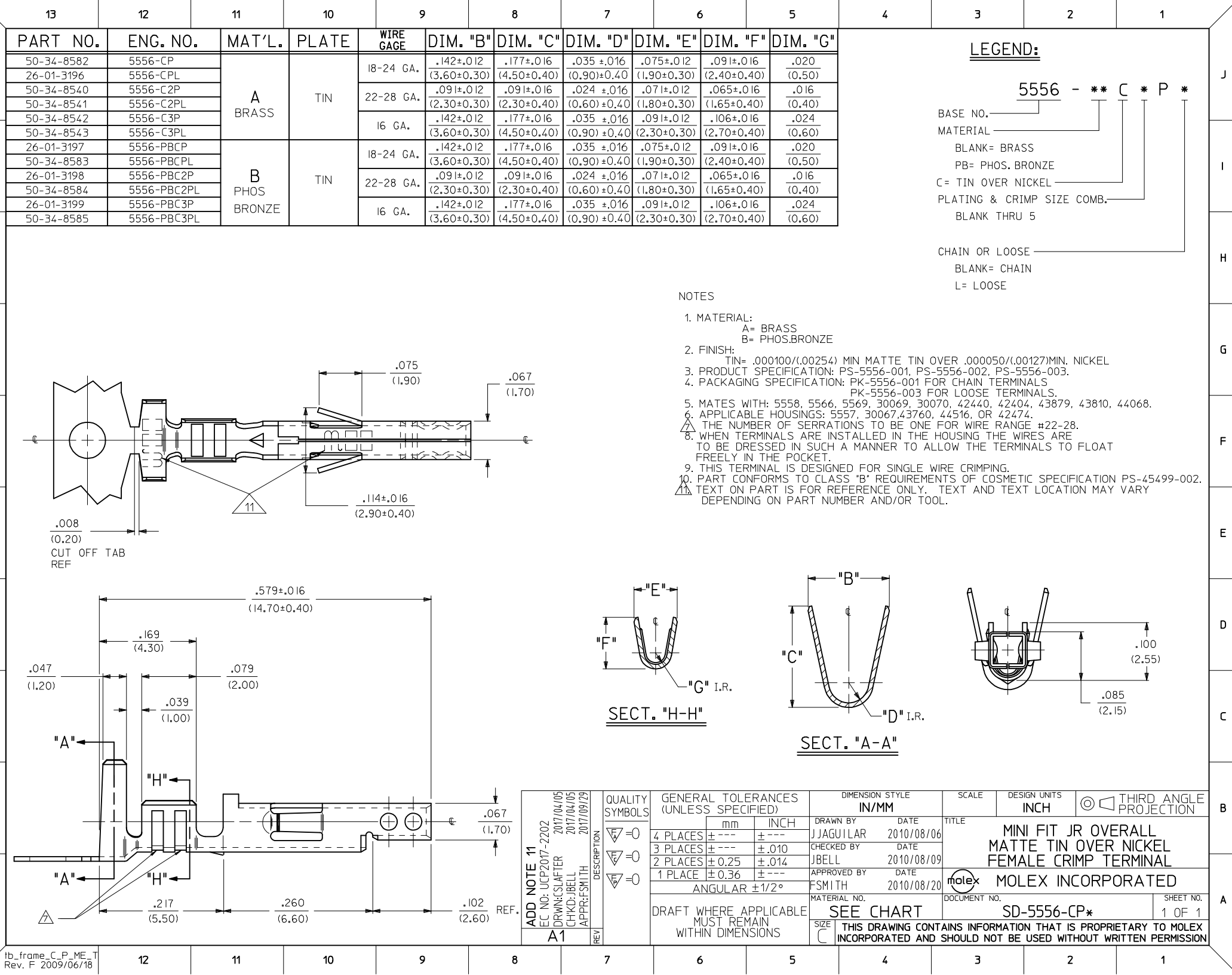


13	12	11	10	9	8	7	6	5	4	3	2	1
PART NO.	ENG. NO.	MAT'L.	PLATE	WIRE GAGE	DIM. "B"	DIM. "C"	DIM. "D"	DIM. "E"	DIM. "F"	DIM. "G"	LEGEND:	
50-34-8582	5556-CP	A BRASS	TIN	18-24 GA.	.142±.012 (3.60±0.30)	.177±.016 (4.50±0.40)	.035 ±.016 (0.90)±0.40	.075±.012 (1.90±0.30)	.091±.016 (2.40±0.40)	.020 (0.50)		
26-01-3196	5556-CPL			22-28 GA.	.091±.012 (2.30±0.30)	.091±.016 (2.30±0.40)	.024 ±.016 (0.60)±0.40	.071±.012 (1.80±0.30)	.065±.016 (1.65±0.40)	.016 (0.40)	5556 - ** C * P *	
50-34-8540	5556-C2P											
50-34-8541	5556-C2PL			16 GA.	.142±.012 (3.60±0.30)	.177±.016 (4.50±0.40)	.035 ±.016 (0.90) ±0.40	.091±.012 (2.30±0.30)	.106±.016 (2.70±0.40)	.024 (0.60)	BASE NO. _____ MATERIAL _____ BLANK= BRASS PB= PHOS. BRONZE C= TIN OVER NICKEL PLATING & CRIMP SIZE COMB. _____ BLANK THRU 5	
50-34-8542	5556-C3P											
50-34-8543	5556-C3PL	B PHOS BRONZE	TIN	18-24 GA.	.142±.012 (3.60±0.30)	.177±.016 (4.50±0.40)	.035 ±.016 (0.90)±0.40	.075±.012 (1.90±0.30)	.091±.016 (2.40±0.40)	.020 (0.50)	CHAIN OR LOOSE _____ BLANK= CHAIN L= LOOSE	
26-01-3197	5556-PBCP			22-28 GA.	.091±.012 (2.30±0.30)	.091±.016 (2.30±0.40)	.024 ±.016 (0.60)±0.40	.071±.012 (1.80±0.30)	.065±.016 (1.65±0.40)	.016 (0.40)		
50-34-8583	5556-PBCPL											
26-01-3198	5556-PBC2P											
50-34-8584	5556-PBC2PL			16 GA.	.142±.012 (3.60±0.30)	.177±.016 (4.50±0.40)	.035 ±.016 (0.90)±0.40	.091±.012 (2.30±0.30)	.106±.016 (2.70±0.40)	.024 (0.60)		
26-01-3199	5556-PBC3P											
50-34-8585	5556-PBC3PL											



- NOTES
- MATERIAL:
A= BRASS
B= PHOS.BRONZE
 - FINISH:
TIN= .000100/(.00254) MIN MATTE TIN OVER .000050/(.00127)MIN. NICKEL
 - PRODUCT SPECIFICATION: PS-5556-001, PS-5556-002, PS-5556-003.
 - PACKAGING SPECIFICATION: PK-5556-001 FOR CHAIN TERMINALS.
PK-5556-003 FOR LOOSE TERMINALS.
 - MATES WITH: 5558, 5566, 5569, 30069, 30070, 42440, 42404, 43879, 43810, 44068.
 - APPLICABLE HOUSINGS: 5557, 30067, 43760, 44516, OR 42474.
 - THE NUMBER OF SERRATIONS TO BE ONE FOR WIRE RANGE #22-28.
 - WHEN TERMINALS ARE INSTALLED IN THE HOUSING THE WIRES ARE TO BE DRESSED IN SUCH A MANNER TO ALLOW THE TERMINALS TO FLOAT FREELY IN THE POCKET.
 - THIS TERMINAL IS DESIGNED FOR SINGLE WIRE CRIMPING.
 - PRODUCT CONFORMS TO CLASS "B" REQUIREMENTS OF COSMETIC SPECIFICATION PS-45499-002.
 - TEXT ON PART IS FOR REFERENCE ONLY. TEXT AND TEXT LOCATION MAY VARY DEPENDING ON PART NUMBER AND/OR TOOL.



Mouser Electronics

Authorized Distributor

Click to View Pricing, Inventory, Delivery & Lifecycle Information:

Molex:

50-34-8540