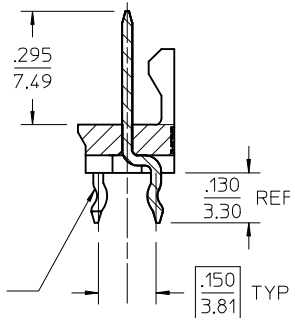
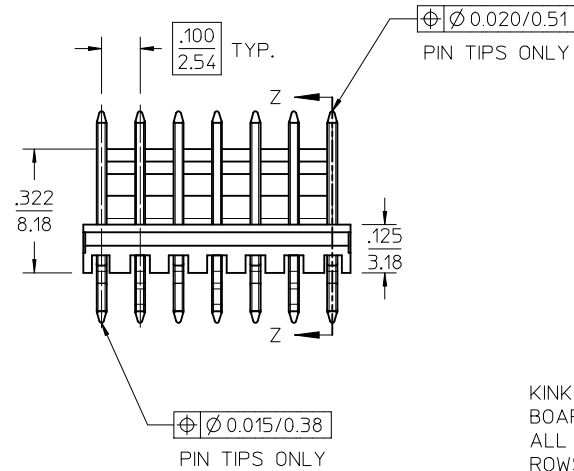


# NOTES

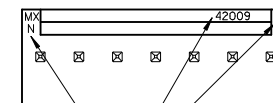
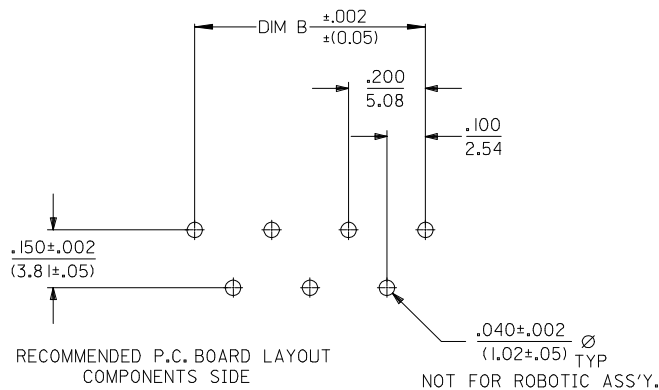
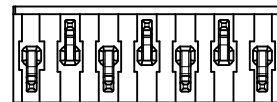
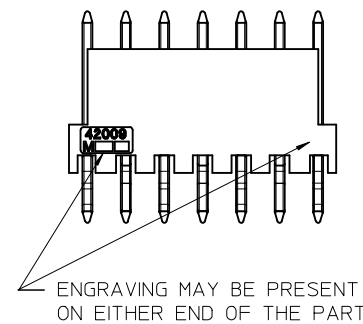
1. MATERIAL: WAFER - GLASS FILLED POLYESTER, UL94 V-0, COLOR: NATURAL (WHITE)  
PIN - BRASS
2. FINISH: OVERALL REFLOWED MATTE TIN: .000060/0.00152 MIN. OVER .000050/0.00127 MIN. NICKEL
3. PRODUCT SPECIFICATION: PS-10-07
4. BULK PACK PER PK-43009-001
5. THIS PART CONFORMS TO CLASS B REQUIREMENTS OF COSMETIC SPECIFICATION PS-45499-002.
6. ENGRAVING LOCATION IS DETERMINED BY TOOLING AND WILL BE PRESENT AT EITHER LOCATION SHOWN.

## ENG. NO. DESIGNATION:

A-42009- N - \*\*  
 CKT. SIZE — VOID PIN DESIGNATION  
 A= #1 PIN  
 B= #2 PIN  
 C= #3 PIN  
 ECT.



KINKED PINS FOR P.C. BOARD RETENTION-  
 ALL PINS KINKED, TWO ROWS OPPOSING EACH OTHER



10	.995/(25.27)	.900/(22.86)
9	.895/(22.73)	.800/(20.32)
8	.795/(20.19)	.700/(17.78)
7	.695/(17.65)	.600/(15.24)
6	.595/(15.11)	.500/(12.70)
5	.495/(12.57)	.400/(10.16)
4	.395/(10.03)	.300/(7.62)
3	.295/(7.49)	.200/(5.08)
2	.195/(4.95)	.100/(2.54)
CKT SIZE	DIM A	DIM B

REDRAWN, ENGRAVING EC NO: UCP2013-3460 DRWN:KIPPER 2013/04/11 CHKD:ANDERSON 2013/04/11 APPR:FSMITH 2014/01/13	DESCRIPTION	QUALITY SYMBOLS <div>▽=0</div> <div>▽=0</div> <div>▽=0</div>	GENERAL TOLERANCES (UNLESS SPECIFIED)		DIMENSION STYLE IN/MM		SCALE 4:1	DESIGN UNITS INCH	THIRD ANGLE PROJECTION <div>⊙ □</div>			
			mm	INCH	DRAWN BY EDGLEY	DATE 1986/11/29	TITLE WAFER, FRICTION LOCK ASSEMBLY					
			4 PLACES ± ---	± ---	CHECKED BY EDGLEY	DATE 1986/11/29						
			3 PLACES ± ---	± .010	APPROVED BY FSMITH	DATE 2014/01/13						
			2 PLACES ± 0.25	± .014	molex							
			1 PLACE ± 0.36	± ---								
			0 PLACE ± ---	± ---	MATERIAL NO.		DOCUMENT NO.		SHEET NO.			
			ANGULAR ±1/2°		SEE CHART		SDA-42009-*		1 OF 2			
			DRAFT WHERE APPLICABLE MUST REMAIN WITHIN DIMENSIONS		SIZE C		THIS DRAWING CONTAINS INFORMATION THAT IS PROPRIETARY TO MOLEX INCORPORATED AND SHOULD NOT BE USED WITHOUT WRITTEN PERMISSION					



# Mouser Electronics

Authorized Distributor

Click to View Pricing, Inventory, Delivery & Lifecycle Information:

Molex:

22-46-4071