

OPTION CODE

OPT. CODE	RAMP	PACKAGING
A	STD. RAMP	PK-2139-001
C	NONE	

NO. OF CKT'S.

2139-N* - **

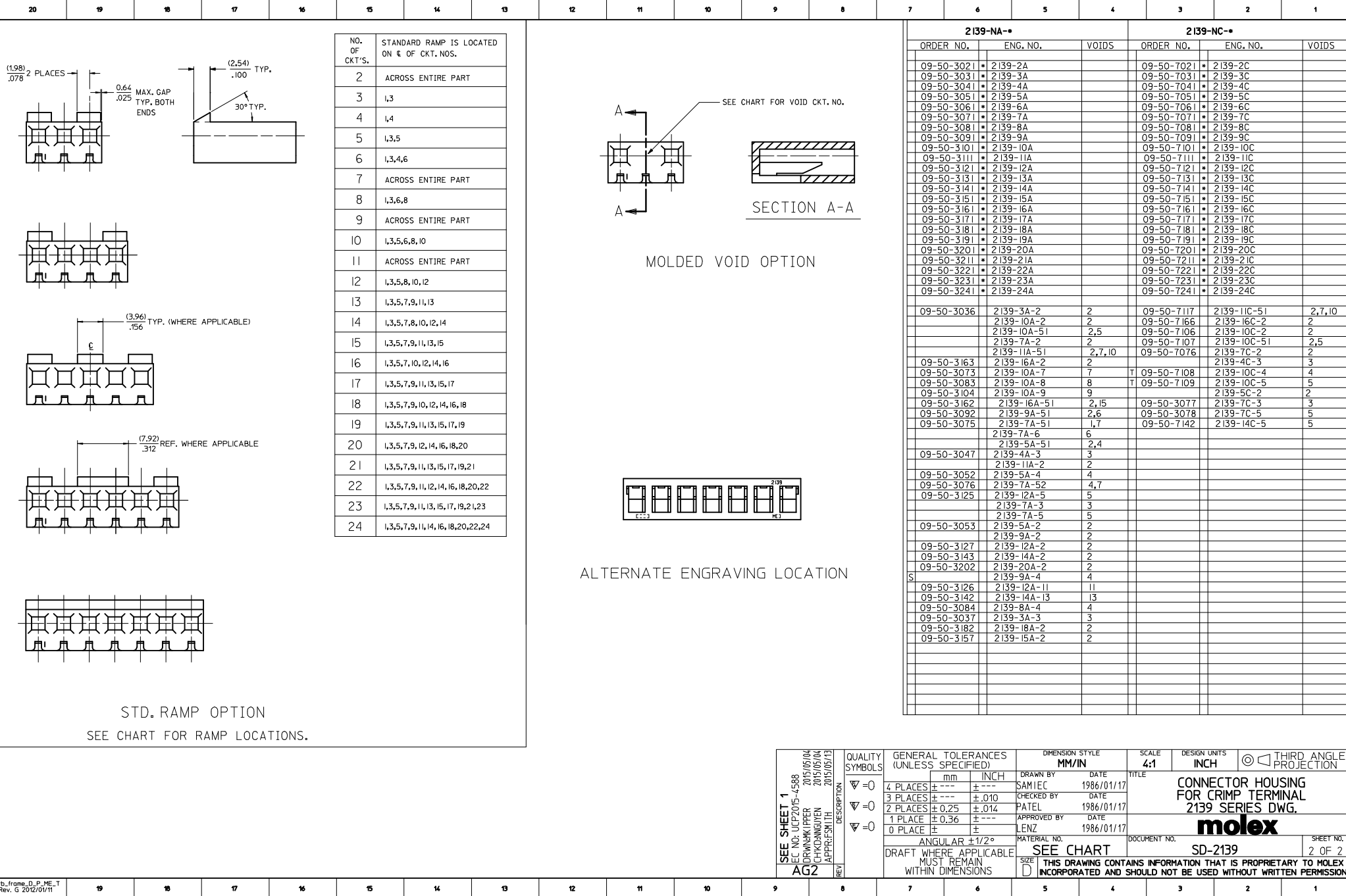
VOID CODE
NO. CORRESPONDS TO
CKT. NO. VOIDED.
MULT. VOIDS START WITH 51.

DIM. A	DIM. B	NO. OF CKTS
(7.82)	(3.96±.13)	2
.308	.156±.005	3
(11.79)	(7.92±.13)	
.464	.312±.005	4
(15.75)	(11.89±.13)	
.620	.468±.005	5
(19.71)	(15.85±.13)	
.776	.624±.005	6
(23.67)	(19.81±.13)	
.932	.780±.005	7
(27.64)	(23.77±.13)	
1.088	.936±.005	8
(31.60)	(27.74±.25)	
1.244	1.092±.010	9
(35.56)	(31.70±.25)	
1.400	1.248±.010	10
(39.52)	(35.66±.25)	
1.556	1.404±.010	11
(43.48)	(39.62±.25)	
1.712	1.560±.010	12
(47.45)	(43.59±.25)	
1.868	1.716±.010	13
(51.41)	(47.55±.31)	
2.024	1.872±.012	14
(55.37)	(51.51±.36)	
2.180	2.028±.014	15
(59.33)	(55.47±.36)	
2.336	2.184±.014	16
(63.30)	(59.44±.36)	
2.492	2.340±.014	17
(67.26)	(63.40±.36)	
2.648	2.496±.014	18
(71.22)	(67.36±.36)	
2.804	2.652±.014	19
(75.18)	(71.32±.36)	
2.960	2.808±.014	20
(79.15)	(75.29±.36)	
3.116	2.964±.014	21
(83.11)	(79.25±.46)	
3.272	3.120±.018	22
(87.07)	(83.21±.46)	
3.428	3.276±.018	23
(91.03)	(87.17±.46)	
3.584	3.432±.018	24
(95.00)	(91.14±.46)	
3.740	3.588±.018	

NOTES:

- MATERIAL: NYLON, UL94V-2, COLOR: NATURAL
- FINISH: N/A
- PARTS CONFORM TO PRODUCT SPECIFICATION PS-08-50.
- PACKAGING INFORMATION: SEE LEGEND
- THIS HOUSING FOR USE WITH TERMINAL NO. 2478 (18 TO 24 GA) & 2578 (22 TO 26 GA). WITH (2.54)±.100 MAX. INSULATION DIA., HOUSING 41695 IS RECOMMENDED FOR OVER (2.54)±.100 DIA. INSULATION.
- DIMENSIONS GIVEN ACROSS CENTERLINES ARE SYMMETRICAL ABOUT THOSE CENTERLINES WITHIN HALF THE TOTAL TOLERANCE.
- LAST CIRCUIT NUMBER NOT PRESENT ON 2-5 CIRCUIT HOUSINGS AND MAY OR MAY NOT BE PRESENT ON 6 CIRCUIT HOUSINGS AND LARGER.
- MAX BOW .005 MM/MM OR .005 IN/IN
- THIS PART CONFORMS TO CLASS B REQUIREMENTS OF COSMETIC SPECIFICATION PS-45499-002.

REVISE NOTE 7 EC NO. UCP2015-4588 DESIGNED BY: 2015/05/04 DRAWN BY: 2015/05/04 CHECKED BY: 2015/05/04 APPROVED BY: 2015/05/13 AGZ	QUALITY SYMBOLS	GENERAL TOLERANCES (UNLESS SPECIFIED)	DIMENSION STYLE	SCALE	DESIGN UNITS	THIRD ANGLE PROJECTION
	▽=0	mm INCH	MM/IN	4:1	INCH	
	▽=0	4 PLACES ± --- ± ---	DRAWN BY: SAMIEC	DATE: 1986/01/17		
	▽=0	3 PLACES ± --- ± ---	CHECKED BY: DATE			
		2 PLACES ± 0.25 ± .014	APPROVED BY: PATEL	DATE: 1986/01/17		
		1 PLACE ± 0.36 ± ---	APPROVED BY: LENZ	DATE: 1986/01/07		
		0 PLACE ± ±	MATERIAL NO.	DOCUMENT NO.		
		ANGULAR ±1/2°	CONNECTOR HOUSING .156 CL CRIMP TERMINAL 2139 SERIES DWG. molex			
		DRAFT WHERE APPLICABLE	SD-2139 1 OF 2			
		MUST REMAIN WITHIN DIMENSIONS	THIS DRAWING CONTAINS INFORMATION THAT IS PROPRIETARY TO MOLEX INCORPORATED AND SHOULD NOT BE USED WITHOUT WRITTEN PERMISSION			



Mouser Electronics

Authorized Distributor

Click to View Pricing, Inventory, Delivery & Lifecycle Information:

Molex:

09-50-3162