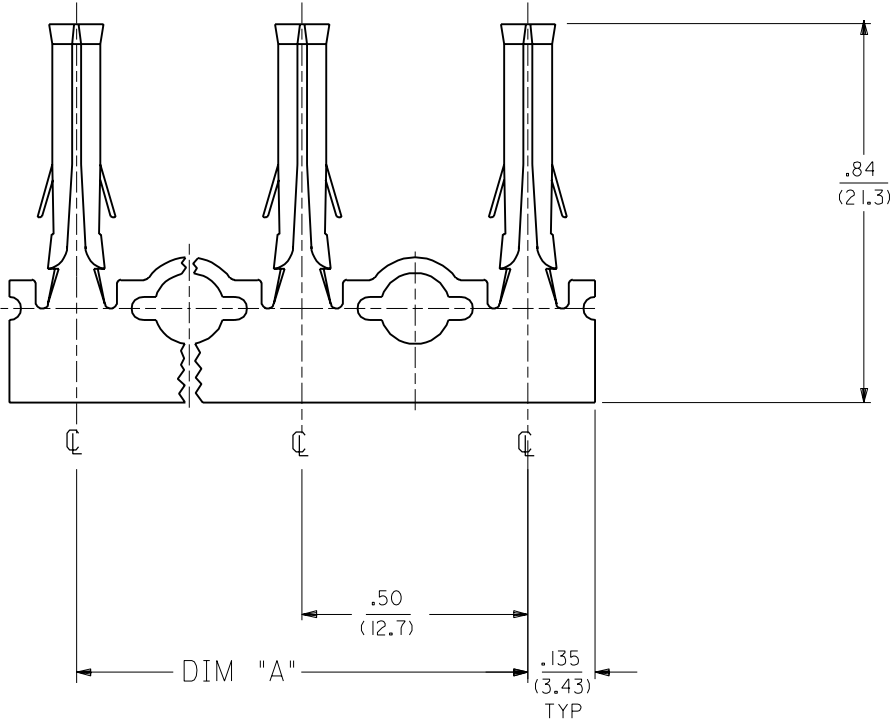


PART NO.	ENG. NO.	CIRCUIT SIZE	DIM "A"
02-09-1199	42299-A	CHAIN FORM	—
PRELIMINARY	42299-A2	2	$\frac{0.50}{(12.7)}$
PRELIMINARY	42299-A3	3	$\frac{1.00}{(25.4)}$
PRELIMINARY	42299-A4	4	$\frac{1.50}{(38.1)}$
PRELIMINARY	42299-A5	5	$\frac{2.00}{(50.8)}$



NOTES :

1. MATERIAL: 70/30 BRASS, .010/(0.25) TH'K.

2. FINISH:  
A = HOT TIN DIP 20 mi - 80 mi/(0.51 - 2.0) MIN.  
(SEE SDES-88-P901)

3. TERMINALS FURNISHED IN CHAIN UNLESS SPECIFIED OTHERWISE. SUFFIX INDICATES SPECIFIED CIRCUIT SIZE CUT LENGTH.

LEGEND:

42299-\*\*\*

BASE NUMBER —

PLATING CODE —  
(SEE NOTE 2)

FORM: BLANK = CHAIN —  
# = SPECIFIED CUT  
CIRCUIT SIZE  
(SEE NOTE 3)

DIMENSIONS SHOWN (METRIC) INCH		UNLESS OTHERWISE SPECIFIED TOLERANCES: ANGULAR ± 1/2°	
INCH		METRIC	
3 PLACE	± .010	---	
2 PLACE	± .014	± 0.25	
1 PLACE	---	± 0.35	
DRAFT WHERE APPLICABLE MUST REMAIN WITHIN DIMENSIONS			
DRWG. BY	RK	CHK'D. BY	GWF
APP'D. BY	GWF	SCALE	4 : 1
TITLE		FEMALE TERMINAL CHAIN FORM, .093/(2.36) DIA.	
PART NO.		SEE CHART	
FILE NAME		SD42299X1.DGN	
THIS DRAWING CONTAINS INFORMATION THAT IS PROPRIETARY TO MOLEX INC. AND SHOULD NOT BE USED WITHOUT WRITTEN PERMISSION.		DIV. CP	
SHEET NO.		DATE	
1 OF 1		89/ 9/ 6	
REVISE ONLY ON CAD SYSTEM			

# Mouser Electronics

Authorized Distributor

Click to View Pricing, Inventory, Delivery & Lifecycle Information:

Molex:

02-09-1199