

PLEASE CHECK WWW.MOLEX.COM FOR LATEST PART INFORMATION

Part Number:

0011110065

Status:

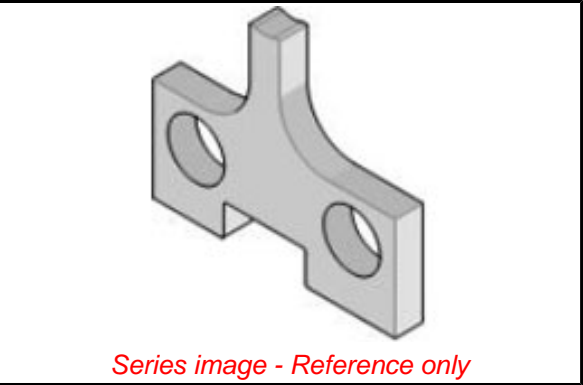
Active

Overview:

Application Tooling

Description:

Conductor Anvil



Documents:

RoHS Certificate of Compliance (PDF)

General	
Product Family	Application Tooling
Series	207126
Comments	See Tooling Specification (PDF) Above
Function	Cutter
Geographic Area	Global
Level of Automation	Manual
More Detailed Tech Information	<a href="mailto:applicationtooling@molex.com">applicationtooling@molex.com</a>
Overview	Application Tooling
Product Name	N/A
Tool Type	Applicator
UPC	800753878358
Warranty Disclaimer	CAUTION: Molex tooling crimp specifications are valid only when used with Molex terminals and tooling manufactured by Molex and sold by Molex or authorized distributors ("Molex Tooling"). When using tooling other than Molex Tooling with Molex specific connector systems listed in our ATS documents, the Molex tooling qualification does not apply and the responsibility for full qualification of the connector system is that of the customer. Molex accepts no liability for connector performance or tooling support where tooling other than Molex Tooling is used or where Molex Tooling is modified.

Material Info

Engineering Number

4971 20

<div><div>EU ELV</div><div>Not Reviewed</div></div>	
<div><div>EU RoHS</div><div>Not Reviewed</div><div>REACH SVHC</div><div>Not Reviewed</div><div>Halogen-Free</div><div>Status</div><div>Not Reviewed</div></div>	<div><div>China RoHS</div></div>
For more information, please visit <a href="#">Contact US</a>	
China ROHS	Not Reviewed
ELV	Not Reviewed
RoHS Phthalates	Not Reviewed

Search Parts in this Series

207126 Series

Use With

11010085 , 11010086

PLEASE CHECK WWW.MOLEX.COM FOR LATEST PART INFORMATION

# Mouser Electronics

Authorized Distributor

Click to View Pricing, Inventory, Delivery & Lifecycle Information:

Molex:

11-11-0065