

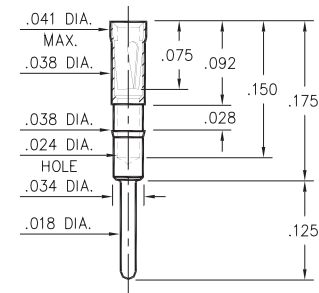
PIN RECEPTACLES

**FOR .015" - .018" DIAMETER PINS (#09 CONTACT)
FOR .015" - .020" DIAMETER PINS (#11 CONTACT)
AND .015" - .022" DIAMETER PINS (#21 CONTACT)**

0467

0467-0-15-XX-21-XX-04-0

Press-fit in .037 mounting hole

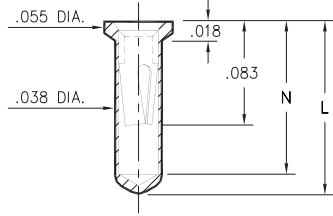


0552

0552-X-15-XX-X1-XX-10-0

Solder mount in .040 min. mounting hole
Also available on 16mm wide carrier tape:
1,500 parts per 13" reel

Order as: 0552-X-57-XX-X1-XX-10-0

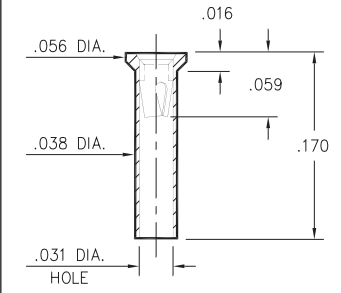


Basic Part Number	Length L	Depth N
0552-1	.136	.120
0552-2	.170	.150

5522

5522-0-15-XX-09-XX-10-0

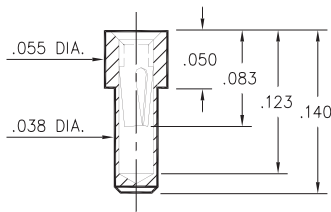
Solder mount in .040 min. mounting hole



0569

0569-0-15-XX-X1-XX-10-0

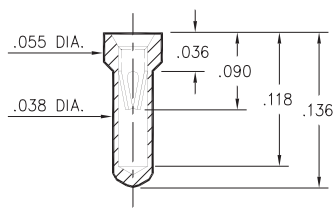
Solder mount in .040 min. mounting hole



6023

6023-0-15-XX-21-XX-10-0

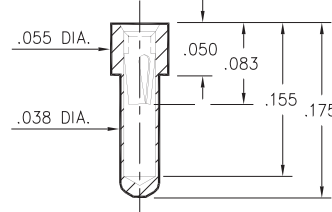
Solder mount in .040 min. mounting hole



6214

6214-0-15-XX-21-XX-10-0

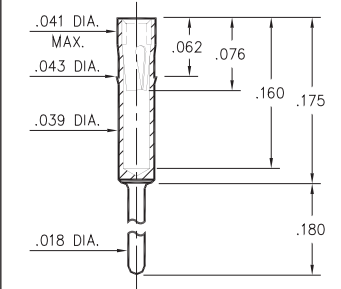
Solder mount in .040 min. mounting hole



2086

2086-0-15-XX-21-XX-04-0

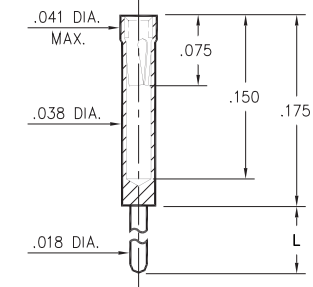
Press-fit in .040 mounting hole



0461

0461-X-15-XX-X1-XX-04-0

Solder mount in .020 min. mounting hole



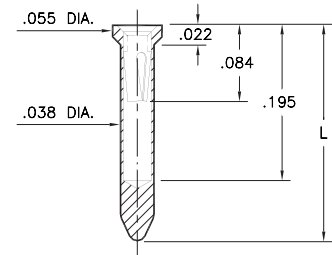
Basic Part Number	Length L
0461-0	.400
0461-1	.275
0461-2	.180
0461-3	.125
0461-4	.060
0461-5	.440

8579

8579-X-15-XX-X1-XX-10-0

Solder mount in .040 min. mounting hole
Also available on 24mm wide carrier tape:
1,200 parts per 13" reel

Order as: 8579-0-57-XX-X1-XX-10-0



Basic Part Number	Length L
8579-0	.234
8579-1	.295

SPECIFICATIONS:

Shell Material: Brass Alloy 360, 1/2 Hard

Contact Material: Beryllium Copper Alloy 172, HT

Dimensions: Inches

Tolerances On: Lengths: $\pm .005$

Diameters: $\pm .002$

Angles: $\pm 2^\circ$



ORDER CODE: XXXX - X - 15 - XX - XX - XX - 0

BASIC PART #

SPECIFY SHELL FINISH:

- 01 200 μ " TIN/LEAD OVER NICKEL
- 80 200 μ " TIN OVER NICKEL (RoHS)
- 15 10 μ " GOLD OVER NICKEL (RoHS)

SPECIFY CONTACT FINISH:

- 02 100 μ " TIN/LEAD OVER NICKEL
- 84 100 μ " TIN OVER NICKEL (RoHS)
- 27 30 μ " GOLD OVER NICKEL (RoHS)

SELECT CONTACT:

#09, #11 or #21 CONTACT (DATA ON PAGES 250 & 251)

(For alternate contact choices, see group A on page 248)



Mill-Max Mfg. Corp. • 190 Pine Hollow Road, P.O. Box 300, Oyster Bay, NY 11771 • 516-922-6000 • Fax: 516-922-9253 • www.mill-max.com

Mouser Electronics

Authorized Distributor

Click to View Pricing, Inventory, Delivery & Lifecycle Information:

Mill-Max:

[2086-0-15-01-21-27-04-0](#) [0569-0-15-80-21-84-10-0](#) [0569-0-15-80-21-27-10-0](#) [0569-0-15-80-11-84-10-0](#) [0569-0-15-01-21-02-10-0](#) [2086-0-15-80-21-84-04-0](#)