

# MAX solutions

## TO-5 and TO-100 Through-Hole and Surface Mount Transistor Sockets

TO-5 and TO-100 transistor sockets make field insertion and removal easy and convenient. Inside each transistor socket are precision-machined, brass alloy receptacles assembled with a Mill-Max, 4-finger #30 contact.

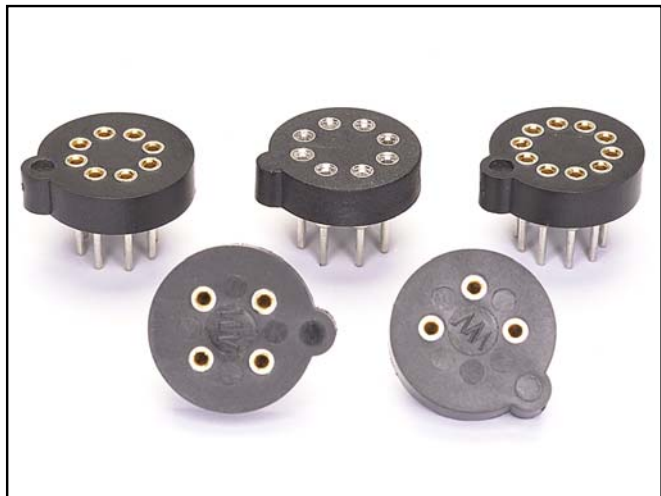
The #30 contact provides a hi-rel mechanical and electrical connection to the mated transistor lead. Mill-Max #30 contacts have a pin diameter acceptance range of .015"-.025". Their current rating is 3 AMPs per position.

Both the through-hole and surface mount transistor sockets utilize high temperature thermoplastic suitable for both wave-soldering and reflow soldering.

Series 917 TO package sockets are available in 3, 4, 8 and 10 positions. Two 8-pin versions feature pin centers on .200" and .230" diameter circles.

Through-hole and SMT TO-5 and TO-100 sockets are currently packaged in bulk.

However, tape and reel packaging options can be quoted. Contact our engineers at [techsupport@mill-max.com](mailto:techsupport@mill-max.com) for assistance with your tape and reel requirements.



(1/09 -- 591)

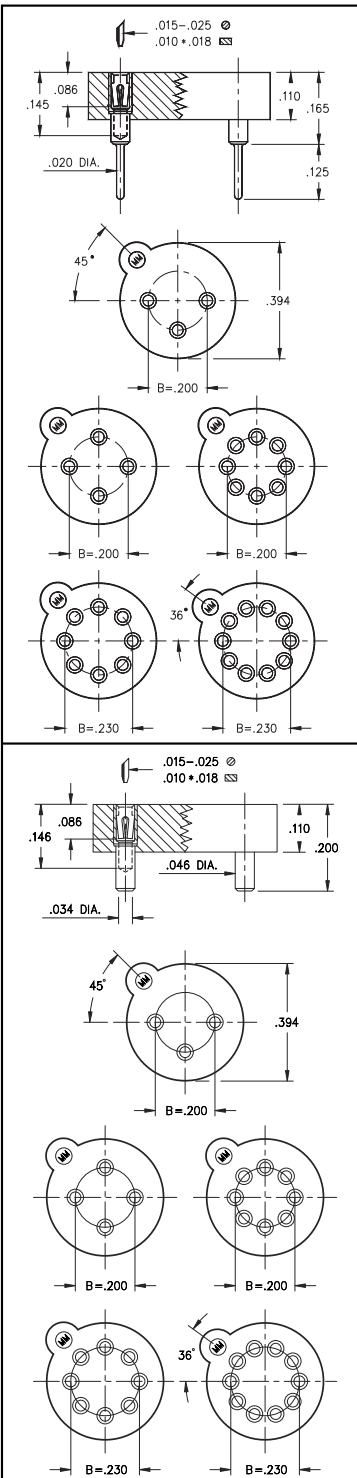
Mill-Max Mfg. Corp. • 190 Pine Hollow Road, Oyster Bay, NY 11771-0300  
516-922-6000 • Fax: 516-922-9253 • [www.mill-max.com](http://www.mill-max.com)



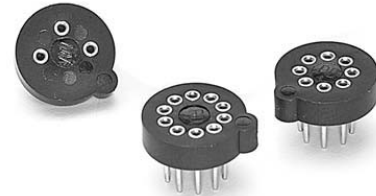


## TRANSISTOR SOCKETS Surface Mount & Thru-Hole Mount

Series 917



- Series 917 TO package sockets are available in 3, 4, 8 and 10 positions.
- Two 8 pin versions feature pin centers on .200" or .230" circle.
- Series 917\_005 use MM #1705 pins, see page 137 for details. Receptacles use Hi-Rel, 6 finger #35 contact rated at 3 amps. See page 209 for details.
- Series 917\_001 use MM #1701 pins, see page 140 for details. Receptacles use Hi-Rel, 4 finger #30 contact rated at 3 amps. See page 208 for details.
- Insulators are high temp. thermoplastic.



### Ordering Information

#### Transistor Sockets (Thru-Hole Mount)

Type	Circle Dia.	No. of Pins	Ordering Information
TO-5	0.200	3	917-XX-103-41-005000
TO-5	0.200	4	917-XX-104-41-005000
TO-5	0.200	8	917-XX-108-41-005000
TO-100	0.230	8	917-XX-208-41-005000
TO-100	0.230	10	917-XX-210-41-005000

#### Transistor Sockets (Surface Mount)

Type	Circle Dia.	No. of Pins	Ordering Information
TO-5	0.200	3	917-43-103-41-001000
TO-5	0.200	4	917-43-104-41-001000
TO-5	0.200	8	917-43-108-41-001000
TO-100	0.230	8	917-43-208-41-001000
TO-100	0.230	10	917-43-210-41-001000



XX= Plating Code  
See Below

For RoHS compliance  
select  $\diamond$  plating code.

SPECIFY PLATING CODE XX=	13 $\diamond$		93	99		43 $\diamond$	44 $\diamond$
Sleeve (Pin)		10 $\mu$ " Au	200 $\mu$ " Sn/Pb	200 $\mu$ " Sn/Pb		200 $\mu$ " Sn	200 $\mu$ " Sn
Contact (Clip)		30 $\mu$ " Au	30 $\mu$ " Au	200 $\mu$ " Sn/Pb		30 $\mu$ " Au	200 $\mu$ " Sn

# Mouser Electronics

Authorized Distributor

Click to View Pricing, Inventory, Delivery & Lifecycle Information:

Mill-Max:

[917-99-103-41-005000](#)