

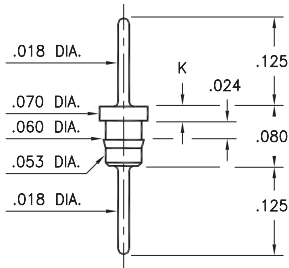
MALE PCB PINS

PRINTED CIRCUIT PINS

1752/6458

XXXX-0-00-XX-00-00-03-0

Press-fit in .057 mounting hole

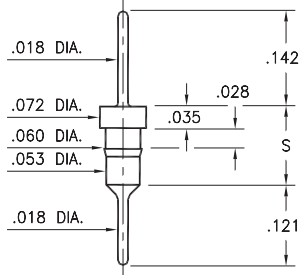


| Basic Part Number | Length K |
|-------------------|----------|
| 1752-0 | .020 |
| 6458-0 | .035 |

3413/8404

X4XX-0-00-XX-00-00-03-0

Press-fit in .057 mounting hole

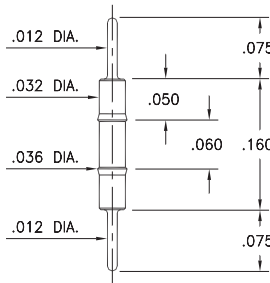


| Basic Part Number | Length S |
|-------------------|----------|
| 3413-0 | .118 |
| 8404-0 | .131 |

9075

9075-0-00-XX-00-00-03-0

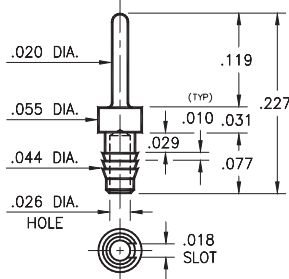
Press-fit in .034 mounting hole



2617

2617-0-01-XX-00-00-03-0

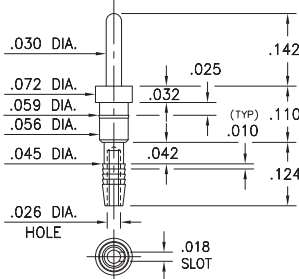
Compliant press-fit in .040 ± .003 plated hole. For .060" → .100" thick board



5607

5607-0-01-XX-00-00-03-0

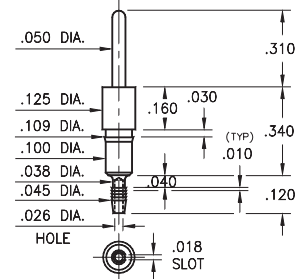
Compliant press-fit in .040 ± .003 plated hole. For .060" → .100" thick board



8995

8995-0-01-XX-00-00-03-0

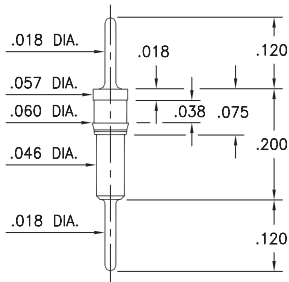
Compliant press-fit in .040 ± .003 plated hole. For .060" → .100" thick board



9218

9218-0-00-XX-00-00-03-0

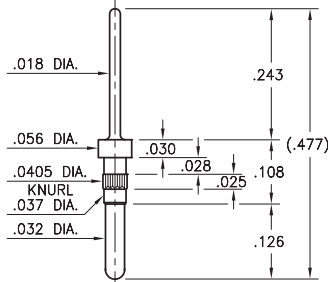
Press-fit in .057 mounting hole



5065

5065-0-00-26-00-00-03-0

Press-fit in .037 mounting hole



SPECIFICATIONS:

Pin Material: Brass Alloy 360, 1/2 Hard
(Except where noted)

Dimensions: Inches

Tolerances On: Lengths: ± .005
Diameters: ± .002
Angles: ± 2°



ORDER CODE: XXXX - X - 0X - XX - 00 - 00 - 03 - 0

BASIC PART #

SPECIFY PIN FINISH:

- 01 200 μ" TIN/LEAD OVER NICKEL
- ◆ 80 200 μ" TIN OVER NICKEL (RoHS)
- ◆ 15 10 μ" GOLD OVER NICKEL (RoHS)
- ◆ 21 20 μ" GOLD OVER NICKEL (RoHS)
- ◆ 34 50 μ" GOLD OVER NICKEL (RoHS)



Mouser Electronics

Authorized Distributor

Click to View Pricing, Inventory, Delivery & Lifecycle Information:

Mill-Max:

[1752-0-00-01-00-00-03-0](#) [1752-0-00-15-00-00-03-0](#) [1752-0-00-21-00-00-03-0](#) [1752-0-00-34-00-00-03-0](#) [3413-0-00-21-00-00-03-0](#) [1933-0-00-15-00-00-03-0](#) [3413-0-00-00-00-00-03-0](#) [8404-0-00-00-00-00-03-0](#) [1752-0-00-00-00-00-03-0](#) [9218-0-00-00-00-00-03-0](#) [6458-0-00-00-00-00-03-0](#) [2617-0-01-00-00-00-03-0](#) [8995-0-01-00-00-00-03-0](#) [9075-0-00-00-00-00-03-0](#) [1935-0-00-15-00-00-03-0](#)