

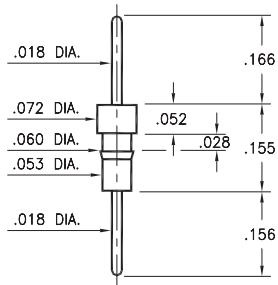
MALE PCB PINS

PRINTED CIRCUIT PINS

0504/0505

050X-0-00-XX-00-00-03-0

Press-fit in .057 mounting hole

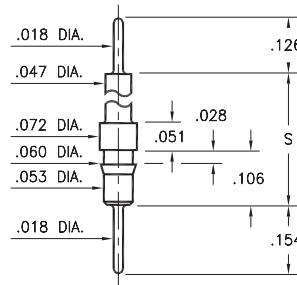


Basic Part Number	Pin Material
0504-0	Phosphor Bronze 544
0505-0	Brass 360

5510/5511

551X-0-00-XX-00-00-03-0

Press-fit in .057 mounting hole

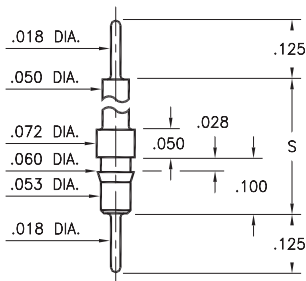


Basic Part Number	Standoff Height S
5510-0	.331
5511-0	.606

4259

4259-X-00-XX-00-00-03-0

Press-fit in .057 mounting hole

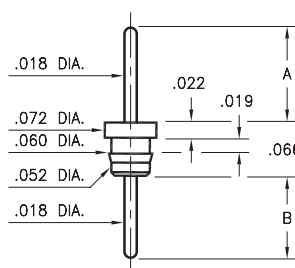


Basic Part Number	Standoff Height S
4259-1	.210
4259-2	.335
4259-3	.585
4259-4	.835

X516

X516-0-00-XX-00-00-03-0

Press-fit in .057 mounting hole

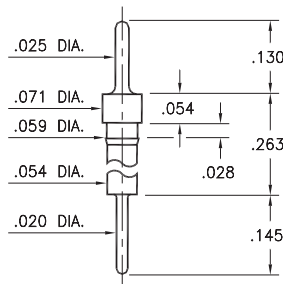


Basic Part Number	Pin Length A	Pin Length B
3516-0	.125	.108
4516-0	.135	.118

8859

8859-0-00-XX-00-00-03-0

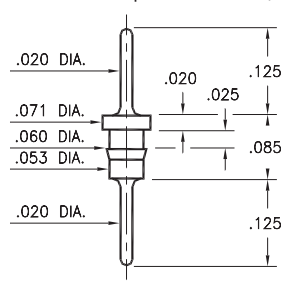
Press-fit in .056 mounting hole



6585

6585-0-00-XX-00-00-03-0

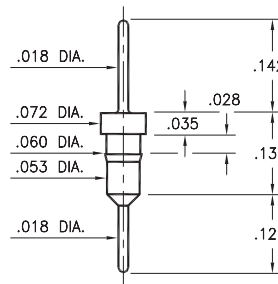
Press-fit in .057 mounting hole
Pin material is Phosphor Bronze 544 (B2)



3404

3404-0-00-XX-00-00-03-0

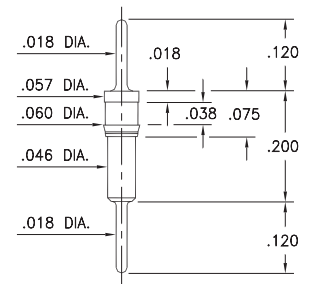
Press-fit in .057 mounting hole



9218

9218-0-00-XX-00-00-03-0

Press-fit in .057 mounting hole



SPECIFICATIONS:

Pin Material: Brass Alloy 360, 1/2 Hard
(Except where noted)

Dimensions: Inches

Tolerances On: Lengths: ±.005
Diameters: ±.002
Angles: ±2°



ORDER CODE: XXXX - X - 00 - XX - 00 - 00 - 03 - 0

BASIC PART #

SPECIFY PIN FINISH:

- 01 200 μ" TIN/LEAD OVER NICKEL
- ◆ 80 200 μ" TIN OVER NICKEL (RoHS)
- ◆ 15 10 μ" GOLD OVER NICKEL (RoHS)
- ◆ 21 20 μ" GOLD OVER NICKEL (RoHS)
- ◆ 34 50 μ" GOLD OVER NICKEL (RoHS)



Mouser Electronics

Authorized Distributor

Click to View Pricing, Inventory, Delivery & Lifecycle Information:

Mill-Max:

[6585-0-00-01-00-00-03-0](#) [0505-0-00-01-00-00-03-0](#) [0504-0-00-01-00-00-03-0](#) [0504-0-00-15-00-00-03-0](#) [0504-0-00-21-00-00-03-0](#) [0504-0-00-34-00-00-03-0](#) [0505-0-00-15-00-00-03-0](#) [0505-0-00-21-00-00-03-0](#) [0505-0-00-34-00-00-03-0](#) [4259-1-00-21-00-00-03-0](#) [5510-0-00-15-00-00-03-0](#) [5511-0-00-15-00-00-03-0](#) [3404-0-00-34-00-00-03-0](#) [3404-0-00-80-00-00-03-0](#) [3404-0-00-15-00-00-03-0](#) [3404-0-00-21-00-00-03-0](#) [4259-1-00-00-00-00-03-0](#) [3516-0-00-00-00-00-03-0](#) [3404-0-00-00-00-00-03-4](#) [0504-0-00-00-00-00-03-0](#) [3404-0-00-00-00-00-03-0](#) [5510-0-00-00-00-00-03-0](#) [4259-2-00-00-00-00-03-0](#) [4259-4-00-00-00-00-03-0](#) [5511-0-00-00-00-00-03-0](#) [4259-3-00-00-00-00-03-0](#) [6585-0-00-00-00-00-03-0](#) [3404-0-00-15-00-00-03-4](#) [0505-0-00-00-00-00-03-0](#) [8859-0-00-00-00-00-03-0](#) [3169-0-00-15-00-00-03-0](#)