

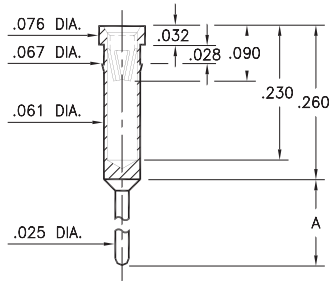
PIN RECEPTACLES

FOR .025" - .037" DIAMETER PINS AND .025" SQUARE PINS

0401/6401

X401-0-15-XX-47-XX-04-0

Press-fit in .064 mounting hole

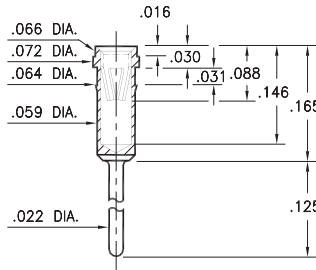


Basic Part Number	Length A
0401-0	.340
6401-0	.540

1303

1303-0-15-XX-47-XX-04-0

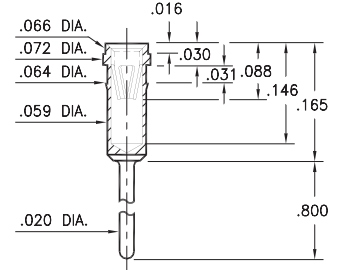
Press-fit in .061 mounting hole



8303

8303-0-15-XX-47-XX-04-0

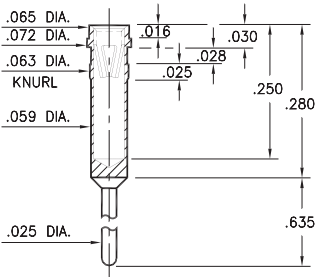
Press-fit in .061 mounting hole



4095

4095-0-15-XX-47-XX-04-0

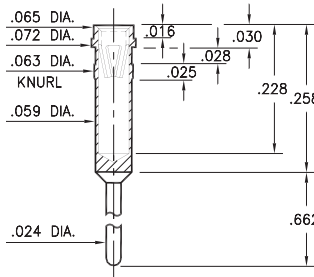
Press-fit in .061 mounting hole



4014

4014-0-15-XX-47-XX-04-0

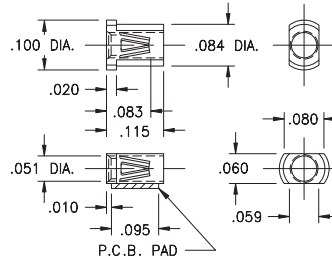
Press-fit in .061 mounting hole



8806

8806-0-18-XX-47-XX-40-0

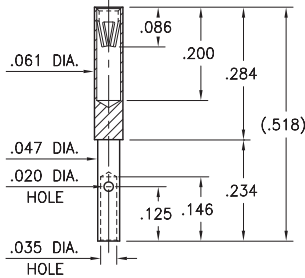
Surface mount
Also available on 12mm wide carrier tape:
4,000 parts per 13" reel
See page 194.9 for Tape & Reel details



0722

0722-0-33-XX-47-XX-10-0

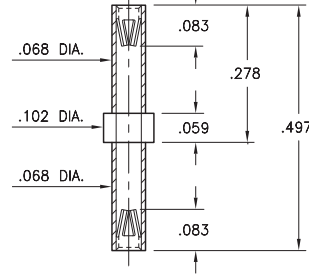
Wire crimp termination. Accepts wire sizes 22 AWG Max. / 28 AWG Min.



6839

6839-0-40-XX-47-XX-10-0

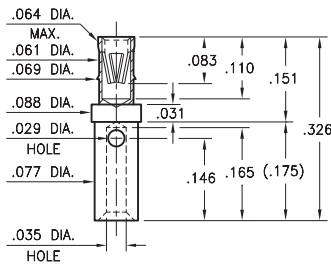
Double Ended Receptacle



6368

6368-0-33-XX-47-XX-10-0

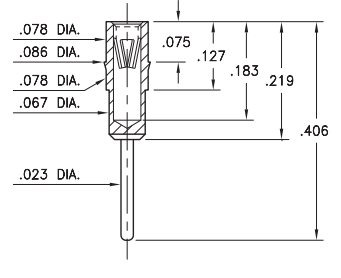
Wire crimp termination. Accepts wire sizes 22 AWG Max. / 26 AWG Min.



4119

4119-0-15-XX-47-XX-04-0

Press-fit in .083 mounting hole



SPECIFICATIONS:

Shell Material: Brass Alloy 360, 1/2 Hard

Contact Material: Beryllium Copper Alloy 172, HT

Dimensions: Inches

Tolerances On: Lengths: ±.005

Diameters: ±.002

Angles: ± 2°



ORDER CODE: XXXX - X - XX - XX - 47 - XX - XX - 0

BASIC PART #

SPECIFY SHELL FINISH:

- 01 200 μ" TIN/LEAD OVER NICKEL
- ◆ 80 200 μ" TIN OVER NICKEL (RoHS)
- ◆ 15 10 μ" GOLD OVER NICKEL (RoHS)

SPECIFY CONTACT FINISH:

- 01 200 μ" TIN/LEAD OVER NICKEL
- ◆ 80 200 μ" TIN OVER NICKEL (RoHS)
- ◆ 27 30 μ" GOLD OVER NICKEL (RoHS)

SELECT CONTACT:

#47 CONTACT (DATA ON PAGE 256)

(For alternate contact choices, see group D on page 248)



Mouser Electronics

Authorized Distributor

Click to View Pricing, Inventory, Delivery & Lifecycle Information:

Mill-Max:

[0401-0-15-01-47-01-04-0](#) [1303-0-15-01-47-01-04-0](#) [1303-0-15-01-47-27-04-0](#) [0401-0-15-15-47-27-04-0](#) [1303-0-15-15-47-27-04-0](#) [1303-0-15-00-47-00-04-0](#) [8303-0-15-00-00-00-04-0](#) [0401-0-15-00-00-00-04-0](#) [1303-0-15-00-16-00-04-0](#) [1303-0-15-80-16-27-04-0](#) [1303-0-15-01-47-14-04-0](#) [0401-0-15-01-47-14-04-0](#) [0401-0-15-80-47-14-04-0](#) [1303-0-15-80-47-14-04-0](#) [4094-0-15-15-47-27-04-0](#) [4094-0-15-01-47-27-04-0](#) [4094-0-15-80-47-27-04-0](#) [4094-0-15-01-47-01-04-0](#) [4094-0-15-80-47-80-04-0](#) [6401-0-15-01-47-14-04-0](#) [4095-0-15-80-47-14-04-0](#) [4095-0-15-01-47-14-04-0](#) [6401-0-15-80-47-14-04-0](#) [8303-0-15-80-47-14-04-0](#) [4094-0-15-01-47-14-04-0](#) [8303-0-15-01-47-14-04-0](#)