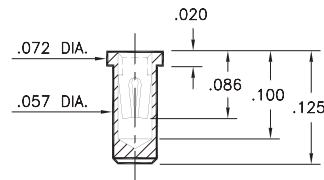


PIN RECEPTACLES

FOR .015" - .025" DIAMETER PINS

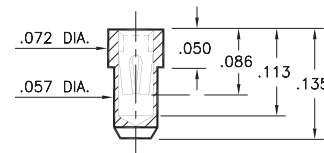
0669

0669-0-15-XX-30-XX-10-0
Solder mount in .060 min. mounting hole
Also available on 16mm wide carrier tape:
1,700 parts per 13" reel
See page 194.3 for Tape & Reel details



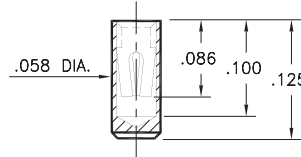
0670

0670-0-15-XX-30-XX-10-0
Solder mount in .060 min. mounting hole
Also available on 16mm wide carrier tape:
2,000 parts per 13" reel
See page 194.3 for Tape & Reel details



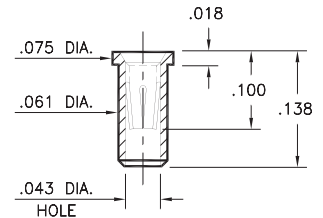
0673

0673-0-15-XX-30-XX-10-0
Surface mount



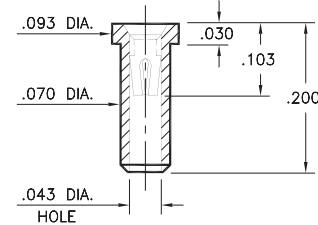
0666

0666-0-15-XX-32-XX-10-0
Solder mount in .064 min. mounting hole
Also available on 16mm wide carrier tape:
2,000 parts per 13" reel
See page 194.4 for Tape & Reel details



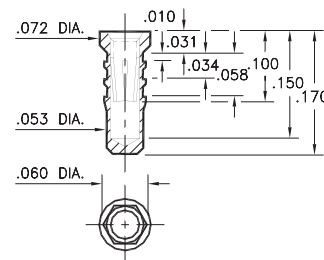
0341

0341-0-15-XX-30-XX-10-0
Solder mount in .073 mounting hole
Also available on 12mm wide carrier tape:
1,400 parts per 13" reel
See page 194.3 for Tape & Reel details



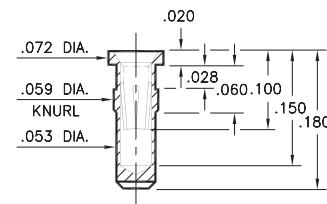
0252

0252-0-15-XX-32-XX-10-0
Hex press-fit in .057 plated through-hole



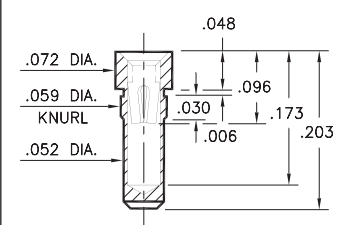
0678

0678-0-15-XX-32-XX-10-0
Press-fit in .057 mounting hole



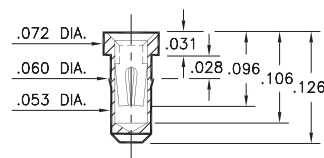
0676

0676-0-15-XX-30-XX-10-0
Press-fit in .057 mounting hole



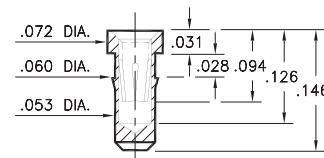
0697

0697-0-15-XX-30-XX-10-0
Press-fit in .057 mounting hole



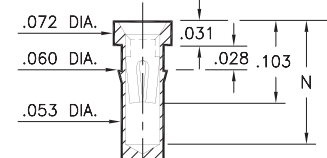
0668

0668-0-15-XX-30-XX-10-0
Press-fit in .057 mounting hole



0253/1033

XXX3-0-15-XX-30-XX-10-0
Press-fit in .057 mounting hole



Basic Part Number	Length L	Depth N
0253-0	.173	.148
1033-0	.203	.162

SPECIFICATIONS:

Shell Material: Brass Alloy 360, 1/2 Hard

Contact Material: Beryllium Copper Alloy 172, HT

Dimensions: Inches

Tolerances On: Lengths: ±.005

Diameters: ±.002

Angles: ±2°



ORDER CODE: XXXX - X - XX - XX - XX - XX - 10 - 0

BASIC PART #

SPECIFY SHELL FINISH:

- 01 200 μ" TIN/LEAD OVER NICKEL
- ◆ 80 200 μ" TIN OVER NICKEL (RoHS)
- ◆ 15 10 μ" GOLD OVER NICKEL (RoHS)

SPECIFY CONTACT FINISH:

- 02 100 μ" TIN/LEAD OVER NICKEL
- ◆ 84 100 μ" TIN OVER NICKEL (RoHS)
- ◆ 27 30 μ" GOLD OVER NICKEL (RoHS)

SELECT CONTACT:

#30 or #32 CONTACT (DATA ON PAGE 253)

(For alternate contact choices, see groups B and C on page 248)



Mouser Electronics

Authorized Distributor

Click to View Pricing, Inventory, Delivery & Lifecycle Information:

Mill-Max:

[1033-0-15-80-30-84-10-0](#) [1033-0-15-80-30-27-10-0](#) [0669-0-15-80-30-84-10-0](#) [0669-0-15-80-30-27-10-0](#) [0252-0-15-15-30-27-10-0](#) [0252-0-15-01-30-27-10-0](#) [0341-0-15-15-30-27-10-0](#) [0669-0-15-01-30-27-10-0](#) [0252-0-15-15-32-27-10-0](#) [1033-0-15-01-30-02-10-0](#) [1033-0-15-01-30-27-10-0](#) [0697-0-15-01-30-02-10-0](#) [0697-0-15-01-30-27-10-0](#) [0678-0-15-01-32-02-10-0](#) [0678-0-15-01-32-27-10-0](#) [0676-0-15-01-30-02-10-0](#) [0676-0-15-01-30-27-10-0](#) [0673-0-15-01-30-02-10-0](#) [0673-0-15-01-30-27-10-0](#) [0670-0-15-01-30-02-10-0](#) [0670-0-15-01-30-27-10-0](#) [0669-0-15-01-30-02-10-0](#) [0668-0-15-01-30-02-10-0](#) [0668-0-15-01-30-27-10-0](#) [0666-0-15-01-32-02-10-0](#) [0666-0-15-01-32-27-10-0](#) [0341-0-15-01-30-02-10-0](#) [0341-0-15-01-30-27-10-0](#) [0253-0-15-01-30-02-10-0](#) [0253-0-15-01-30-27-10-0](#) [0252-0-15-01-32-02-10-0](#) [0253-0-15-15-30-27-10-0](#) [0668-0-15-15-30-27-10-0](#) [0670-0-15-15-30-27-10-0](#) [0673-0-15-15-30-27-10-0](#) [0676-0-15-15-30-27-10-0](#) [0678-0-15-15-32-27-10-0](#) [0697-0-15-15-30-27-10-0](#) [1033-0-15-15-30-27-10-0](#) [0676-0-15-00-00-00-10-0](#) [0668-0-15-00-00-00-10-0](#) [0673-0-15-00-00-00-10-0](#) [0252-0-15-00-00-00-10-0](#) [0253-0-15-00-00-00-10-0](#) [0669-0-15-00-00-00-10-0](#) [0678-0-15-00-00-00-10-0](#) [0666-0-15-00-00-00-10-0](#) [1133-0-15-01-21-27-34-0](#) [0666-0-15-15-32-14-10-0](#) [0678-0-15-01-32-14-10-0](#) [0697-0-15-01-30-14-10-0](#) [0697-0-15-80-30-14-10-0](#) [0669-0-15-80-30-14-10-0](#) [0670-0-15-80-30-14-10-0](#) [0676-0-15-80-30-14-10-0](#) [0668-0-15-80-30-14-10-0](#) [1033-0-15-80-30-14-10-0](#) [0341-0-15-01-30-14-10-0](#) [0253-0-15-80-30-14-10-0](#) [0252-0-15-01-32-14-10-0](#) [0668-0-15-01-30-14-10-0](#) [0673-0-15-80-30-14-10-0](#) [0666-0-15-80-32-14-10-0](#) [0252-0-15-80-32-14-10-0](#) [0341-0-15-80-30-14-10-0](#) [0678-0-15-80-32-14-10-0](#) [0676-0-15-01-30-14-10-0](#) [0670-0-15-01-30-14-10-0](#) [1033-0-15-01-30-14-10-0](#) [0253-0-15-01-30-14-10-0](#) [0673-0-15-01-30-14-10-0](#) [0669-0-15-01-30-14-10-0](#) [0341-0-15-15-30-14-10-0](#)