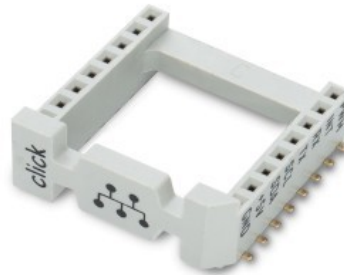


# SOCKET mikroBUS 16 SMD Gray



PID: MIKROE-4319

The SMD Gray mikroBUS™ socket has a stronger design for easier interfacing with Click boards™. It features horizontal supports between 8-pin connectors and a 45° chamfered lower edge, ensuring a perfect fit and alignment. All pins are clearly labeled for secure placement. These sockets are packaged in plastic anti-static shipping tubes for safe transportation.

## **Downloads**

[SOCKET mikroBUS 16 SMD Gray Drawing](#)

[SOCKET mikroBUS 16 SMD Gray Altium libraries](#)

[SOCKET mikroBUS 16 SMD Gray Eagle libraries](#)

[mikroBUS HOST 8-Gen SMD CAD file](#)

Mikroe produces entire development toolchains for all major microcontroller architectures.

Committed to excellency, we are dedicated to helping engineers bring the project development up to speed and achieve outstanding results.



ISO 27001: 2013 certification of informational security management system.  
ISO 14001: 2015 certification of environmental management system.  
OHSAS 18001: 2008 certification of occupational health and safety management system.



ISO 9001: 2015 certification of quality management system (QMS).

# Mouser Electronics

Authorized Distributor

Click to View Pricing, Inventory, Delivery & Lifecycle Information:

[Mikroe:](#)

[MIKROE-4319](#)