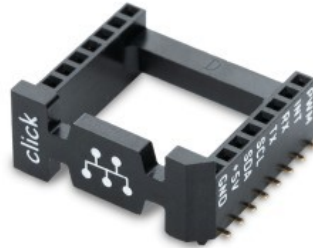


SOCKET mikroBUS 16 SMD



PID: MIKROE-4248

The SMD Black mikroBUS™ socket has a stronger design for easier interfacing with Click boards™. It features horizontal supports between 8-pin connectors and a 45° chamfered lower edge, ensuring a perfect fit and alignment. All pins are clearly labeled for secure placement. These sockets are packaged in plastic anti-static shipping tubes for safe transportation.

Downloads

[SOCKET mikroBUS 16 SMD Drawing](#)

[SOCKET mikroBUS 16 SMD Altium libraries](#)

[SOCKET mikroBUS 16 SMD Eagle libraries](#)

[mikroBUS HOST 8-Gen SMD CAD file](#)

Mikroe produces entire development toolchains for all major microcontroller architectures.

Committed to excellency, we are dedicated to helping engineers bring the project development up to speed and achieve outstanding results.



ISO 27001: 2013 certification of informational security management system.
 ISO 14001: 2015 certification of environmental management system.
 OHSAS 18001: 2008 certification of occupational health and safety management system.



ISO 9001: 2015 certification of quality management system (QMS).

Mouser Electronics

Authorized Distributor

Click to View Pricing, Inventory, Delivery & Lifecycle Information:

[Mikroe:](#)

[MIKROE-4248](#)