

# Silicon Sculptor 4 Quickstart Card

## Kit Contents

Quantity	Description
1	Silicon Sculptor 4 Concurrent Programmer
1	Power Supply
1	Power Cord
1	USB 2.0 A to B Cable
1	Quickstart Card



## Overview

Congratulations on your purchase of a Microsemi device programmer. Your new device programmer is designed to provide years of support for thousands of devices, with the use of optional socket cards. Before you get started, take the time to carefully read the following instructions that guide you towards a successful programming operation.

This Quickstart Card applies to the Microsemi Silicon Sculptor 4. Silicon Sculptor 4 is an FPGA programming tool equipped to deliver high data throughput and promote ease of use. It incorporates the industry's widely accepted high-speed USB 2.0 standards bus communication, allowing as many as twelve Silicon Sculptor 4 systems to be connected to a single PC through a series of nested high-speed USB 2.0 hubs. It is a highly reliable programmer for Microsemi's portfolio of FPGAs.

## Procedure

### Verification of Calibration

Prior to operating the device, please ensure the device is in a working condition. Visit the following website to verify your Silicon Sculptor 4 is calibrated and ready to use: <https://goo.gl/8HGpLM>.

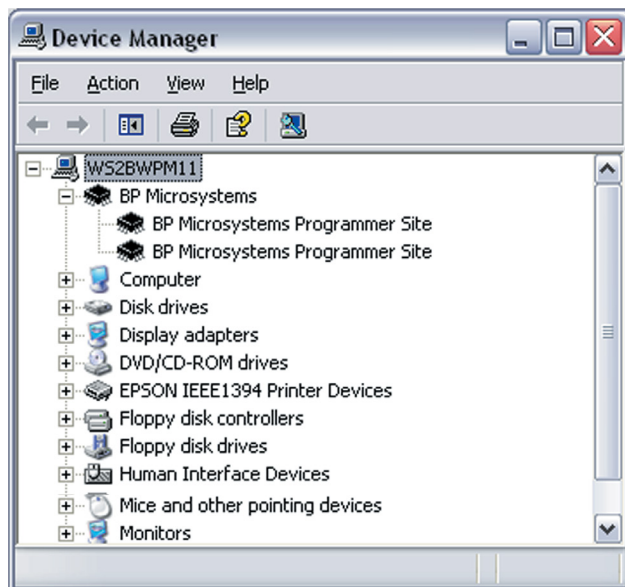
### Setup

1. Download SculptW software from <https://www.microsemi.com/product-directory/programming/4979-silicon-sculptor>.
2. Follow on-screen instructions to install SculptW software and restart your PC.
3. Provide power to the site by connecting the provided external 24 V switching power supply. The programmer requires the input voltage to be accurate within  $\pm 5\%$  to be operational. Confirm that the power supply is rated at least 90 W and 3.75 A. If the accompanying power supply is lost or damaged, contact Microsemi for a replacement. Using an incompatible power supply may cause damage to the programmer.
4. Directly connect the USB cable to type B USB port on back of programmer.
5. Directly connect the USB cable to type A USB port on PC. See the on-screen information to verify the driver installation.

### IMPORTANT!

The Found New Hardware Wizard launches for each individual programming site. You must repeat a USB driver installation for each programming site. After installing the USB drivers, the PC recognizes that the site(s) are connected at a later time. If a different USB port on the PC is used, the Found New Hardware Wizard launches and installs new USB drivers.

6. After the USB driver installation, click **Finish**.



7. Verify that all USB drivers are loaded correctly, recognized by Windows and attached. The programmer sites will be listed in Windows Device Manager. You can open the Device Manager in Windows by accessing Windows Control Panel or with the Windows+Break keyboard combination. Click the Hardware selection. Expand the BPM Microsystems node. There should be a BPM Microsystems programmer site for each programmer site attached and turned on.
8. Insert socket module on the programmer.

**CAUTION: USE ESD PREVENTION PROCEDURES WHEN USING THIS EQUIPMENT. SOCKET MODULES AND DEVICES UNDER TEST ARE ESD SUSCEPTIBLE.**

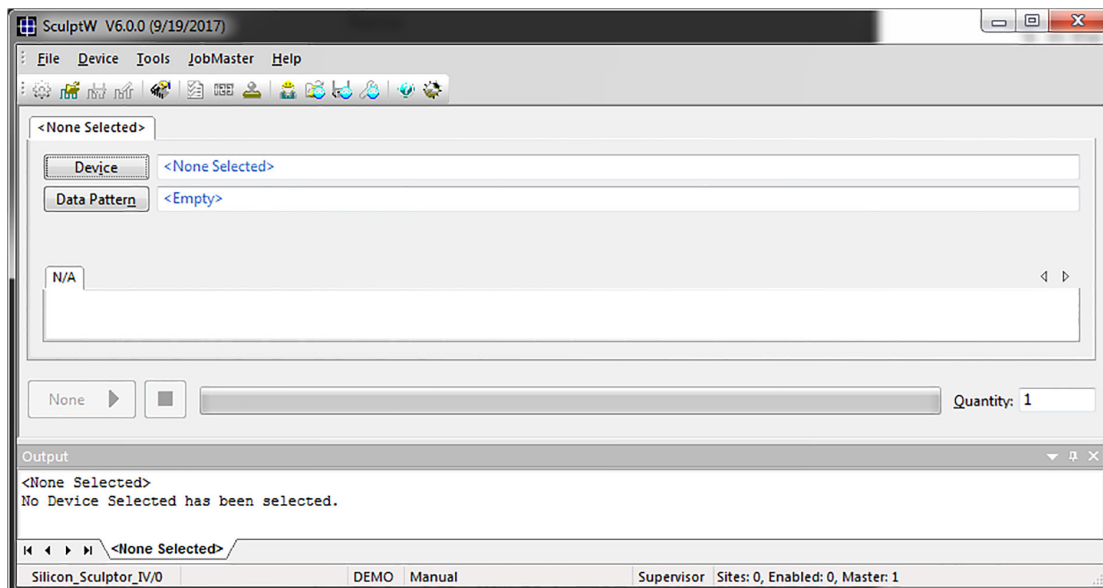


9. Launch SculptW software by double-clicking on the SculptW desktop icon or selecting SculptW from the Windows Start menu/Programs list. When running the software for the first time after installation, run the application as administrator.
10. Check the software screen to ensure that the software recognizes the programmer and socket card. Otherwise, you must perform the configure operation. (Programmer, port, and socket card should appear on the status bar of the SculptW software.). Wait for green pass LED to remain on.

## Programming a Device

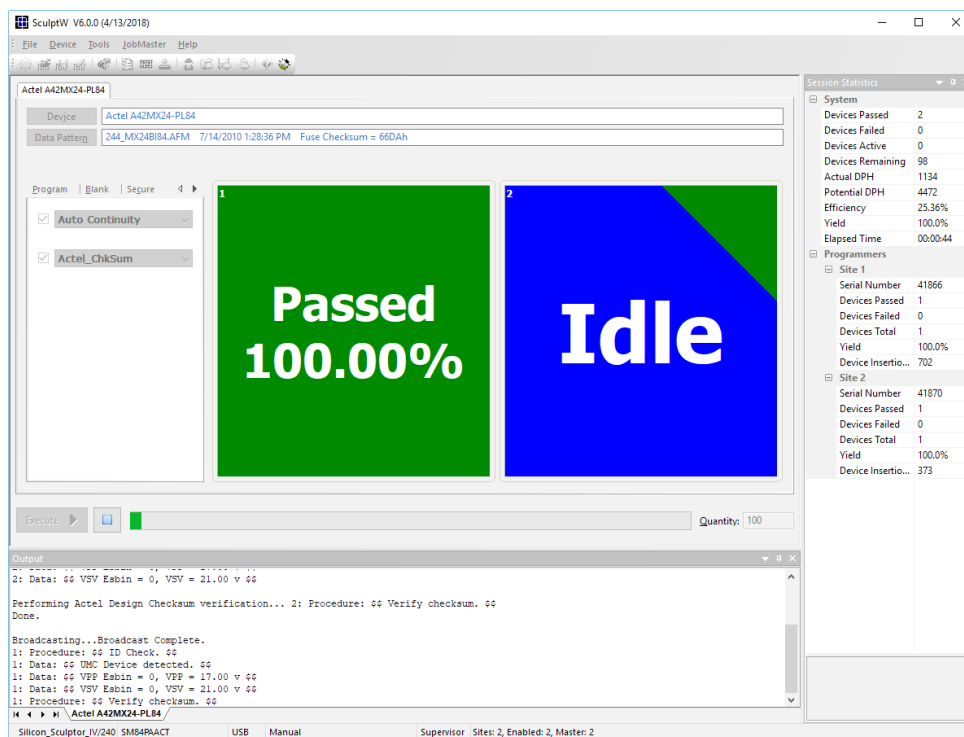
**Note:** Prior to handling ESD components, attach a grounding strap to your wrist and the antistatic connection on the side of the programmer.

1. Click **Device**.



2. Select the device from the list to be programmed.
3. Click **Data Pattern**.
  - a. Click **Open** for a file to be loaded.
  - b. Click **Browse** to search for a file.

- c. Select the file to be loaded.
  - d. Choose the appropriate settings.
  - e. Click **OK**.
  - f. Click **OK**.
4. Under the **Program** tab, choose the appropriate settings for device operations.
5. Select the number of devices to be programmed under the **Quantity** field.
  - a. Place the first device in the socket on site 1.
  - b. Click **Program**.
  - c. Press the **Start** button if the quantity field is set greater than one.
6. Insert the device into socket card. Click **OK** to program device.
7. After the green Pass or red Fail LED is lit, place a device in the site and press the **Start** button on the programmer.



**Microsemi Headquarters**

One Enterprise, Aliso Viejo, CA 92656 USA  
Within the USA: +1 (800) 713-4113  
Outside the USA: +1 (949) 380-6100  
Sales: +1 (949) 380-6136  
Fax: +1 (949) 215-4996  
email: [sales.support@microsemi.com](mailto:sales.support@microsemi.com)  
[www.microsemi.com](http://www.microsemi.com)

Microsemi, a wholly owned subsidiary of Microchip Technology Inc. (Nasdaq: MCHP), offers a comprehensive portfolio of semiconductor and system solutions for aerospace & defense, communications, data center and industrial markets. Products include high-performance and radiation-hardened analog mixed-signal integrated circuits, FPGAs, SoCs and ASICs; power management products; timing and synchronization devices and precise time solutions, setting the world's standard for time; voice processing devices; RF solutions; discrete components; enterprise storage and communication solutions, security technologies and scalable anti-tamper products; Ethernet solutions; Power-over-Ethernet ICs and midspans; as well as custom design capabilities and services. Learn more at [www.microsemi.com](http://www.microsemi.com).

Microsemi makes no warranty, representation, or guarantee regarding the information contained herein or the suitability of its products and services for any particular purpose, nor does Microsemi assume any liability whatsoever arising out of the application or use of any product or circuit. The products sold hereunder and any other products sold by Microsemi have been subject to limited testing and should not be used in conjunction with mission-critical equipment or applications. Any performance specifications are believed to be reliable but are not verified, and Buyer must conduct and complete all performance and other testing of the products, alone and together with, or installed in, any end-products. Buyer shall not rely on any data and performance specifications or parameters provided by Microsemi. It is the Buyer's responsibility to independently determine suitability of any products and to test and verify the same. The information provided by Microsemi hereunder is provided "as is, where is" and with all faults, and the entire risk associated with such information is entirely with the Buyer. Microsemi does not grant, explicitly or implicitly, to any party any patent rights, licenses, or any other IP rights, whether with regard to such information itself or anything described by such information. Information provided in this document is proprietary to Microsemi, and Microsemi reserves the right to make any changes to the information in this document or to any products and services at any time without notice.

©2019 Microsemi, a wholly owned subsidiary of Microchip Technology Inc. All rights reserved. Microsemi and the Microsemi logo are registered trademarks of Microsemi Corporation. All other trademarks and service marks are the property of their respective owners.

# Mouser Electronics

Authorized Distributor

Click to View Pricing, Inventory, Delivery & Lifecycle Information:

[Microchip:](#)

[SILICON-SCULPTOR\\_4](#)