

# chipKIT™ Basic I/O Shield Board Reference Manual

Revision: July 16, 2011



1300 NE Henley Court, Suite 3  
Pullman, WA 99163  
(509) 334 6306 Voice | (509) 334 6300 Fax

## Overview

The chipKIT Basic I/O Shield is a input/output expansion board designed for use with chipKIT microcontroller boards such as the Uno32™ and the Max32™.

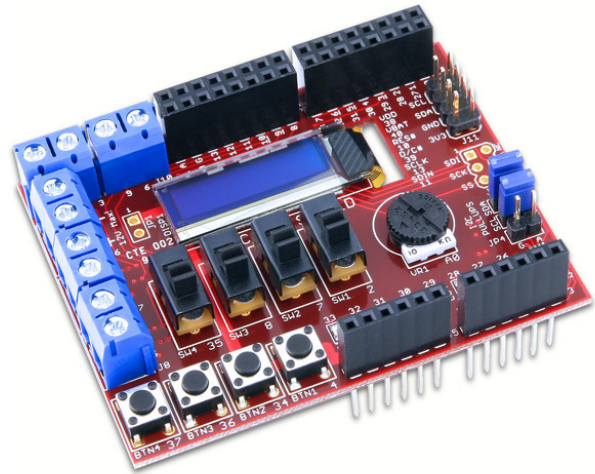
The Basic I/O Shield is designed to provide a range of input/output devices suitable for beginners learning about microcontrollers and various types of I/O devices, or for use by more advanced user to provide inputs or outputs for their own projects.

The Basic I/O Shield provides simple digital input devices such as switches and buttons, and digital output devices such as discrete LEDs and high current open FET drivers. It provides more advanced devices such as an I<sup>2</sup>C EEPROM, an I<sup>2</sup>C temperature sensor, and organic LED graphic display. A potentiometer is also provided for use as an analog input device.

The Basic I/O Shield is designed to the same form factor as the Uno32 board, but is also useable with the Max32 board.

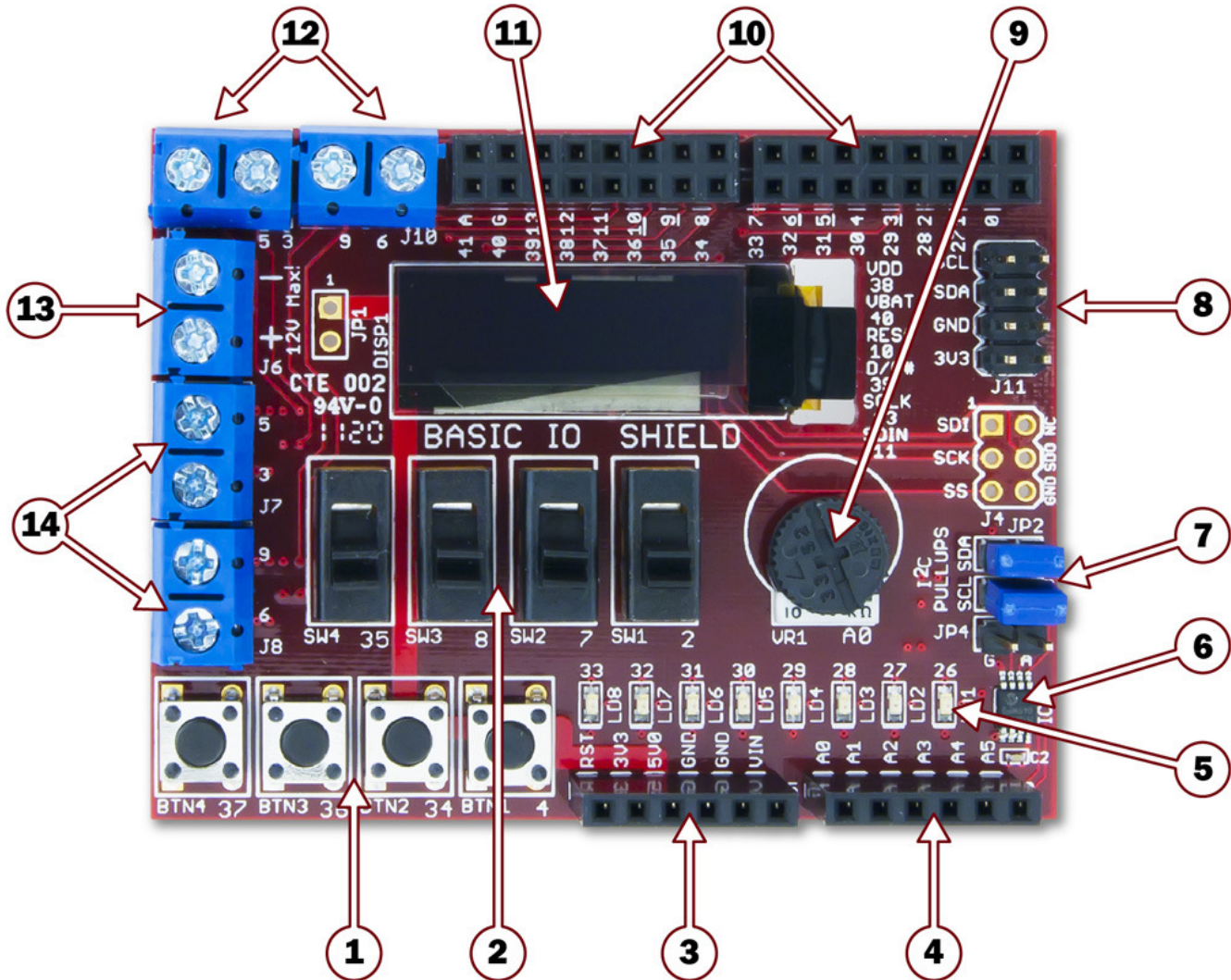
### Features:

- 128x32 pixel OLED graphic display
- I<sup>2</sup>C temperature sensor
- 256Kbit I<sup>2</sup>C EEPROM
- I<sup>2</sup>C daisy chain connector
- 4 push buttons
- 4 slide switches
- 8 discrete LEDs
- 4 open drain FET drivers
- Analog potentiometer



## chipKIT Basic I/O Shield Hardware Overview

The Basic I/O Shield has the following hardware features:



### 1) Push Buttons

Four push buttons provide momentary contact discrete digital inputs. These can be accessed using the `digitalRead` function.

### 2) Slide switches

Four slide switches that provide discrete digital inputs. These can be accessed using the `digitalRead` function.

### 3) J2 – Shield Power Connector

This connector powers the board, receiving power from the chipKIT microcontroller board.

## 4) J3 – Analog Signal Connector

Pin 1 (analog signal A0) is connected to a potentiometer. Pins 5 and 6 (labeled as A4 and A5) provide access to the I<sup>2</sup>C signals SDA and SCL for the I<sup>2</sup>C bus. The I<sup>2</sup>C bus is used to access the temperature sensor and the EEPROM and for the I<sup>2</sup>C daisy chain connector.

Note: On the Uno32 it is necessary to set jumpers JP6 & JP7 to the correct position for accessing the I<sup>2</sup>C signals on that board. On the Max32 board, it is necessary to use jumper wires to bring the I<sup>2</sup>C signals onto the board, as the connector providing the I<sup>2</sup>C bus on the Max32 board doesn't contact the Basic I/O Shield.

## 5) Discrete LEDs

Eight LEDs that provide discrete digital outputs. These can be accessed individually using the digitalWrite function. The LEDs are connected to the low eight bits of microcontroller PORTE and all eight can be written at the same time by writing to PORTE.

## 6) IC2 – Temperature Sensor

This is a Microchip TCN75A digital temperature sensor. It is accessed via the I<sup>2</sup>C bus.

7) JP2/JP3 – I<sup>2</sup>C Pull-up Resistor Enable Jumpers

These jumpers are used to enable or disable the presence of the I<sup>2</sup>C pull-up resistors on the I<sup>2</sup>C bus. Having the shorting blocks installed enables the resistors. Removing the shorting blocks disables them.

8) J11 – I<sup>2</sup>C Daisy Chain Connector

This is a 2x4 pin header connector that provides access to the I<sup>2</sup>C signals SDA and SCL as well as power from the 3.3V power bus and ground. This can be used to extend the I<sup>2</sup>C bus off of the board and to power external I<sup>2</sup>C device. Digilent has cables and a selection of I<sup>2</sup>C peripheral modules that can be accessed using this connector.

## 9) Potentiometer

This is a 10K ohm potentiometer connected across VCC3V3 and ground. It provides an analog input voltage to analog input A0.

## 10) J1 and J2 – Digital Signal Connectors

These connectors bring digital signals from the chipKIT microcontroller board onto the Basic I/O Shield board.

## 11) Organic LED Graphic Display

This is a 128x32 pixel monochrome OLED graphic display panel. This display panel is accessed using the SPI interface.

## 12) J9 &amp; J10 – Digital I/O Signal Connectors

These are screw terminal connectors that provide access to digital I/O signals 3, 5, 6, and 9. These are four of the PWM signals from the chipKIT microcontroller board.

## 13) J6 – Open Drain FET Power Connector

This provides access to the power connections for the open drain FETs.

## 14) , J7, &amp; J8 – Open Drain FET Output

These provide access to the outputs of the open drain FETs.

## chipKIT Basic I/O Shield Hardware Description

### Introduction

The following gives a basic description of the input/output hardware contained in the Basic I/O Shield and how to use it. Refer to Appendix A for a table showing pin definitions, and Appendix B for example code to use the OLED graphic display.

### OLED Graphic Display

The Basic I/O board provides a 128x32 pixel, Organic LED (OLED), graphic display panel. The graphic display panel used is the WiseChip/Univision UG-23832HSWEG04. This display uses the Soloman Systech SSD1306 display controller.

The UG2832 has a power on/power off sequence that should be followed. Failure to follow the power on/power off sequence can shorten the life of the display. The Basic I/O provides two FETs for software control of the two power supplies for the display. The VDD\_EN control is used to turn on/off the power to the logic of the display. The VBAT\_EN control is used to turn on/off power to the OLED display itself. These two pins have pull-up resistors to turn off their respective power supplies when not being driven. The pin is made an output and driven low to turn on the power supply.

#### Power on sequence:

- Apply power to VDD
- Send Display Off command
- Initialize display to desired operating mode
- Clear screen
- Apply power to VBAT
- Delay 100ms
- Send Display On command

#### Power off sequence:

- Send Display Off command
- Power off VBAT
- Delay 100ms
- Power off VDD

The display has a D/C pin (display or command select) that is used to determine whether bytes sent to the display are interpreted as commands or as display data. The D/C pin is set HIGH for display buffer access and LOW for command access.

The RES pin is used to reset the SG1306 display controller. The RES pin is driven LOW for reset and driven HIGH for normal operation. The low going reset pulse must be a minimum of 3us (microseconds) for the display controller to reset correctly.

The UG2832 is a serial device that is accessed using SPI. It is however, a write-only device. It is not possible to read back either the display buffer contents or any kind of status from the panel. The maximum SPI clock frequency supported by the UG2832 is 10Mhz. Due to pin limitations between the Basic I/O and the Uno32 board, the select pin (SS) is wired low on the Basic I/O board and the display is always enabled to receive data over the SPI interface.

Digilent has a library for use with the Basic I/O that provides functions for initializing the display and rendering simple text and graphics onto the display. This library can be used as-is or as a starting point for a more sophisticated graphics library. This library is available on the Digilent web site and in the third part libraries repository on github.

Appendix B provides example code that shows initializing the display and writing to it.



## Discrete Digital I/O Devices

The Basic I/O Shield provides various discrete digital I/O devices. These can be accessed using the `digitalRead` and `digitalWrite` functions. The `pinMode` function is used to set the pin to input or output.

When the buttons and switches on the Basic I/O are not being used, the pins are available on the pass-through shield connectors for use by other shields in the stack. The pins used by the LEDs are also available, however the presence of the LEDs on the lines will load them down, possibly causing some devices to not work. It is safe to use any of these pins as either inputs or outputs.

**Push Buttons:** There are four push buttons switches labeled BTN1 (pin 4), BTN2 (pin 34), BTN3 (pin 36), and BTN4 (pin 37). The `digitalRead` function will return LOW if the button is not pressed and HIGH when the button is pressed.

**Slide Switches:** There are four slide switches labeled SW1 (pin 2), SW2 (pin 7), SW3 (pin 8) and SW4 (pin 35). The `digitalRead` function will return LOW when the switch is down (toward the push buttons) and HIGH when the switch is up (toward the OLED display).

**LEDs:** There are eight LEDs, labeled LD1 – LD8 accessed as digital pins 33 – 26. An LED will be illuminated when the corresponding pin is set to the HIGH state using the `digitalWrite` function and off when set to the LOW state.

The LEDs are attached to the low eight bits of PORTE, with LD1 connected to PORTE bit 0, and LD8 connected to PORTE bit 7. An 8-bit value written to PORTE (or LATE) will display the corresponding binary value on the LEDs.

## Open Drain FET Outputs

The Basic I/O provides four open drain FET outputs. These are low-side N-channel devices and can be used to provide a digital switch

closure to ground. These can be used to switch external loads, such as relay coils, solenoids, stepper motors, and so on.

The FETs used are the NTHD4508N. These FETs are rated for a maximum  $V_{DS}$  (voltage from drain to source) of 20V. They are rated for a maximum continuous current of 3.0A at 25°C and 2.2A at 85°C. For more detailed specifications for the FETs refer to the data sheet available from the On Semiconductor web site.

The FETs are labeled Q1A (pin 9), Q1B (pin 6), Q2A (pin 5), and Q2B (pin 3). These four pins are also four of the PWM outputs supported by the chipKIT boards and the FETs can be switched using pulse width modulation (PWM) using the `analogWrite` function.

An FET is switched on by driving its gate high. When the FET is on, it provides a low impedance path to ground (similar to a closed switch to ground). When the FET is switched off by driving its gate low, it becomes a high impedance path to ground (similar to an open switch to ground). Pull-down resistors are connected to the gate of each FET to ensure that it is off unless being actively driven high by the microcontroller on the chipKIT board.

The FET outputs are accessed via the screw terminal connectors J7 and J8 on the left side of the board. The digital signals used to switch the FETs on and off are also available on screw terminal connectors J9 and J10 at the left side of the upper edge of the board.

A FET is used to switch an external load, such as a relay coil, on and off. The load is wired between the positive side of an external power supply and the output of the FET. When the FET is switched on, current will flow from the external power supply through the load and the FET to ground.

FETs are often used to switch highly inductive loads, such as relay coils, solenoids, and motors. When the current through an inductive load is switched off, a voltage spike will occur

that can damage the FET. The Basic I/O provides clamp diodes (also called snubber or flyback diodes) to clamp the voltage spike and feed the current back to the external supply.

Screw terminal connector J6 is used to provide the power and ground connections back to the external power supply. The negative (-) pin of J6 connects the external supply ground with the Basic I/O ground, and the positive (+) terminal connects the Basic I/O to the external supply voltage.

The unloaded two pin header JP1 can be used to connect the board VCC5V0 power supply bus to the external power supply bus so that the board 5V supply can be used instead of an external supply. In this case, J6 is used to connect the board supply to the external loads. If this is done, the total current consumed by all external loads must not exceed 2A or the current rating of the board power supply (whichever is less).

## I<sup>2</sup>C Bus

The I<sup>2</sup>C bus from the chipKIT microcontroller board is brought onto the Basic I/O Shield. There are two I<sup>2</sup>C devices on the board and a connector for taking the I<sup>2</sup>C bus off of the board to connect to additional external I<sup>2</sup>C devices.

**I<sup>2</sup>C Connector:** Connector J11 can be used to extend the I<sup>2</sup>C bus off of the board to connect to additional external I<sup>2</sup>C devices. J11 is a standard 2x4 pin header connector with 0.100" spaced pins. It provides access to the I<sup>2</sup>C signals, SCL and SDA, plus VCC3V3 and ground. The VCC3V3 can be used to power external I<sup>2</sup>C devices.

The I<sup>2</sup>C bus uses open collector drivers to allow multiple devices to drive the bus signals. This means that pull-up resistors must be provided to supply the logic high state for the signals. The Basic I/O provides 2.2Kohm pull-up resistors. Generally, only one set of pull-up resistors are used on the bus. Jumpers JP2 and JP3 can be used to disable the on-board

pull-up resistors if a different value is needed or some other device on the bus is providing the pull-ups. The on-board pull-up resistors are enabled by install shorting blocks on JP2 and JP3. Removing the shorting blocks disables the pull-up resistors.

Digilent has several small I/O modules available that can be connected using the I<sup>2</sup>C connector. These include a 3-axis accelerometer, 4-channel, 12-bit A/D converter, serial character LCD panel, 3-axis gyroscope, real-time clock/calendar, and I/O expander.

**EEPROM:** A 256Kbit (32Kbyte), I<sup>2</sup>C EEPROM is provided using a Microchip 24LC256. This EEPROM, IC1, is located on the bottom left of the board, just below the chipKIT logo.

The seven bit I<sup>2</sup>C device address for the EEPROM is '1010000'.

Digilent provides a library for accessing this EEPROM. The library is available on the Digilent web site and in the third party libraries repository on github.

For complete technical documentation on the 24LC256, refer to the data sheet available on the Microchip web site.

**Temperature Sensor:** A digital temperature sensor is provided using a Microchip TCN75A 2-Wire Serial Temperature Sensor. The temperature sensor, IC2, is an I<sup>2</sup>C device, and is located in the lower right corner of the board.

The TCN75A is rated for an accuracy of +/-1°C and has selectable resolution from 0.5°C down to 0.0625°C. The seven bit device address is '1001000'.

Digilent provides a library for accessing the temperature sensor. This library is available on the Digilent web site and in the third party library repository on github.

The TCN75A provides an alert output that can be programmed for various functions. This

output can be accessed using JP4, which is adjacent to IC2.

For complete technical documentation on the TCN75A, refer to the data sheet available on the Microchip web site.

## Potentiometer

A potentiometer (pot) is provided on the board to be used as an analog signal source or analog control input. The pot is a 10Kohm trimmer pot connected between the VCC3V3 supply and ground. The wiper of the pot is connected to analog input A0.

The pot is read using the analogRead function.

## Appendix A: chipKIT Basic I/O Shield Pinout Table

Uno32 pin #	Max32 pin #	Function	Description	Notes
10	10	RES	OLED reset	JP4 on Uno32
39	83	DC	OLED data/command select	
13	13	SCLK	OLED serial clock	JP7 on Uno32/JP4 on Max32
11	11	SDIN	OLED serial data in	
40	84	VBAT_EN	OLED VBAT enable	
38	82	VDD_EN	OLED VDD enable	
33	77	LD1	User LED	
32	76	LD2	User LED	
31	75	LD3	User LED	
30	74	LD4	User LED	
29	73	LD5	User LED	
28	72	LD6	User LED	
27	71	LD7	User LED	
26	70	LD8	User LED	
4	4	BTN1	Push button	
34	78	BTN2	Push button	
36	79	BTN3	Push button	
37	80	BTN4	Push button	
2	2	SW1	Slide switch	
7	7	SW2	Slide switch	
8	8	SW3	Slide switch	
35	79	SW4	Slide switch	
3	3	OC1	Open drain/PWM output	JP8 on Uno32/jumper wire on Max32
5	5	OC2	Open drain/PWM output	
6	6	OC3	Open drain/PWM output	
9	9	OC4	Open drain/PWM output	
19	59	SCL	I2C clock	
18	58	SDA	I2c data	
14	54	A0	Potentiometer	



## Appendix B: Example Driver Code

The following gives an example of code to initialize the display controller and write the contents of a memory buffer into the display. This example is written for the chipKIT Uno32 board.

### Symbol and Variable Declarations

```
/* ----- */
/* Pin definitions for access to OLED control signals on chipKIT Uno32
*/

#define prtVddCtrl      IOPORT_F
#define prtVbatCtrl     IOPORT_F
#define prtDataCmd      IOPORT_F
#define prtReset        IOPORT_G
#define bitVddCtrl      BIT_6
#define bitVbatCtrl     BIT_5
#define bitDataCmd      BIT_4
#define bitReset        BIT_9

/* ----- */
/* Symbols describing the geometry of the display.

#define cbOledDispMax  512          //max number of bytes in display buffer

#define ccolOledMax      128        //number of display columns
#define crowOledMax      32         //number of display rows
#define cpagOledMax      4          //number of display memory pages

/* ----- */

/* This array is the off-screen frame buffer used for rendering.
** It isn't possible to read back from the OLED display device,
** so display data is rendered into this off-screen buffer and then
** copied to the display.
*/
BYTE rgbOledBmp[cbOledDispMax];
```

## PIC32 Hardware Initialization

The following function initializes the PIC32 hardware for talking to the display. It initializes the SPI controller and sets the control pins to be outputs.

```

/* ----- */
/** OledHostInit
**
** Parameters:
**     none
**
** Return Value:
**     none
**
** Errors:
**     none
**
** Description:
**     Perform PIC32 device initialization to prepare for use
**     of the OLED display.
**     This example is hard coded for the chipKIT Uno32 and
**     SPI2.
**/

void
OledHostInit()
{
    unsigned int    tcfg;

    /* Initialize SPI port 2.
    */
    SPI2CON = 0;
    SPI2BRG = 15;                //8Mhz, with 80Mhz PB clock
    SPI2STATbits.SPIROV = 0;
    SPI2CONbits.CKP = 1;
    SPI2CONbits.MSTEN = 1;
    SPI2CONbits.ON = 1;

    /* Make pins RF4, RF5, and RF6 be outputs.
    */
    PORTSetBits(IOPORT_F, bitVddCtrl|bitVbatCtrl|bitDataCmd);
    PORTSetPinsDigitalOut(prtDataCmd, bitDataCmd);        //Data/Command# select
    PORTSetPinsDigitalOut(prtVddCtrl, bitVddCtrl);        //VDD power control (1=off)
    PORTSetPinsDigitalOut(prtVbatCtrl, bitVbatCtrl);        //VBAT power control (1=off)

    /* Make the RG9 pin be an output. On the Basic I/O Shield, this pin
    ** is tied to reset.
    */
    PORTSetBits(prtReset, bitReset);
    PORTSetPinsDigitalOut(prtReset, bitReset);
}

```

## Display Controller Initialization

The following function performs initialization of the display controller on the display panel. This performs the power up sequence on the display and initializes it for a non-interleaved display buffer with the origin in the upper left corner.

```

/* ----- */
/** OledDspInit
**
** Parameters:
**     none
**
** Return Value:
**     none
**
** Errors:
**     none
**
** Description:
**     Initialize the OLED display controller and turn the display on.
**/

void
OledDspInit()
{
    /* We're going to be sending commands, so clear the Data/Cmd bit
    */
    PORTClearBits(prtDataCmd, bitDataCmd);

    /* Start by turning VDD on and wait a while for the power to come up.
    */
    PORTClearBits(prtVddCtrl, bitVddCtrl);
    DelayMs(1);

    /* Display off command
    */
    Spi2PutByte(0xAE);

    /* Bring Reset low and then high
    */
    PORTClearBits(prtReset, bitReset);
    DelayMs(1);
    PORTSetBits(prtReset, bitReset);

    /* Send the Set Charge Pump and Set Pre-Charge Period commands
    */
    Spi2PutByte(0x8D);
    Spi2PutByte(0x14);

    Spi2PutByte(0xD9);
    Spi2PutByte(0xF1);

    /* Turn on VCC and wait 100ms
    */
    PORTClearBits(prtVbatCtrl, bitVbatCtrl);
    DelayMs(100);

    /* Send the commands to invert the display. This puts the display origin
    ** in the upper left corner.
    */

```

```
Spi2PutByte(0xA1);          //remap columns
Spi2PutByte(0xC8);          //remap the rows

/* Send the commands to select sequential COM configuration. This makes the
** display memory non-interleaved.
*/
Spi2PutByte(0xDA);          //set COM configuration command
Spi2PutByte(0x20);          //sequential COM, left/right remap enabled

/* Send Display On command
*/
Spi2PutByte(0xAF);

}
```

## Display Memory Update

This function copies the contents of a 512 byte buffer from PIC32 memory to the display. The display memory is organized as four pages of 128 bytes each. Each memory page corresponds to an eight pixel high stripe across the display. Each byte in the memory page corresponds to an eight pixel high column on the display. The least significant bit in a display byte is the top most pixel, and the most significant bit the bottom most pixel. The first byte in the page corresponds to the left most pixels on the display and the last byte the right most pixels.

This function assumes that the display buffer to be copied is the global variable `rgbOledBmp`

```

/* ----- */
/** OledUpdate
**
** Parameters:
**     none
**
** Return Value:
**     none
**
** Errors:
**     none
**
** Description:
**     Update the OLED display with the contents of the memory buffer
*/

void
OledUpdate()
{
    int      ipag;
    int      icol;
    BYTE *    pb;

    pb = rgbOledBmp;

    for (ipag = 0; ipag < cpagOledMax; ipag++) {

        PORTClearBits(prtDataCmd, bitDataCmd);

        /* Set the page address
        */
        Spi2PutByte(0x22);    //Set page command
        Spi2PutByte(ipag);    //page number

        /* Start at the left column
        */
        Spi2PutByte(0x00);    //set low nybble of column
        Spi2PutByte(0x10);    //set high nybble of column

        PORTSetBits(prtDataCmd, bitDataCmd);

        /* Copy this memory page of display data.
        */
        OledPutBuffer(ccolOledMax, pb);
        pb += ccolOledMax;

    }
}

```



## Low Level SPI Functions

The following functions are used to write data to the display panel using the SPI controller.

```

/* ----- */
/** OledPutBuffer
**
** Parameters:
**     cb      - number of bytes to send/receive
**     rgbTx   - pointer to the buffer to send
**
** Return Value:
**     none
**
** Errors:
**     none
**
** Description:
**     Send the bytes specified in rgbTx to the slave.
**
*/

void
OledPutBuffer(int cb, BYTE * rgbTx)
{
    int     ib;
    BYTE bTmp;

    /* Write/Read the data
    */
    for (ib = 0; ib < cb; ib++) {
        /* Wait for transmitter to be ready
        */
        while (SPI2STATbits.SPITBE == 0);

        /* Write the next transmit byte.
        */
        SPI2BUF = *rgbTx++;

        /* Wait for receive byte.
        */
        while (SPI2STATbits.SPIRBF == 0);
        bTmp = SPI2BUF;
    }
}

/* ----- */
/** Spi2PutByte
**
** Parameters:
**     bVal     - byte value to write
**
** Return Value:
**     Returns byte read
**
** Errors:
**     none
**
** Description:
**     Write/Read a byte on SPI port 2

```

```
*/  
  
BYTE  
Spi2PutByte(BYTE bVal)  
{  
    BYTE bRx;  
  
    /* Wait for transmitter to be ready  
    */  
    while (SPI2STATbits.SPITBE == 0);  
  
    /* Write the next transmit byte.  
    */  
    SPI2BUF = bVal;  
  
    /* Wait for receive byte.  
    */  
    while (SPI2STATbits.SPIRBF == 0);  
  
    /* Put the received byte in the buffer.  
    */  
    bRx = SPI2BUF;  
  
    return bRx;  
}
```

# Mouser Electronics

Authorized Distributor

Click to View Pricing, Inventory, Delivery & Lifecycle Information:

[Microchip:](#)

[TDGL005](#)