

6 GHz, 1:4 CML Fanout Buffer/Translator with Internal I/O Termination

Features

- Precision 1:4, 400 mV CML Fanout Buffer
- Guaranteed AC Performance Over Temperature/Voltage:
- > 6 GHz f_{MAX} Clock
- < 60 ps t_r / t_f Times
- < 250 ps t_{pd}
- < 15 ps Max. Skew
- Low-jitter Performance:
- 27 fs_{RMS} Typical Additive Phase Jitter
- Accepts an Input Signal as low as 100 mV
- Unique Patented Input Termination and VT Pin Accepts DC-coupled and AC-coupled Differential Inputs: LVPECL, LVDS, and CML
- 50Ω Source Terminated CML Outputs
- Power Supply 2.5V \pm 5% and 3.3V \pm 10%
- Industrial Temperature Range: -40°C to +85°C
- Available in 3 mm \times 3 mm 16-lead VQFN Package

Applications

- All SONET and All GigE Clock Distribution
- Fibre Channel Clock and Data Distribution
- Backplane Distribution
- Data Distribution: OC-48, OC-48+FEC, XAUI
- High-end, Low Skew, Multiprocessor Synchronous Clock Distribution

General Description

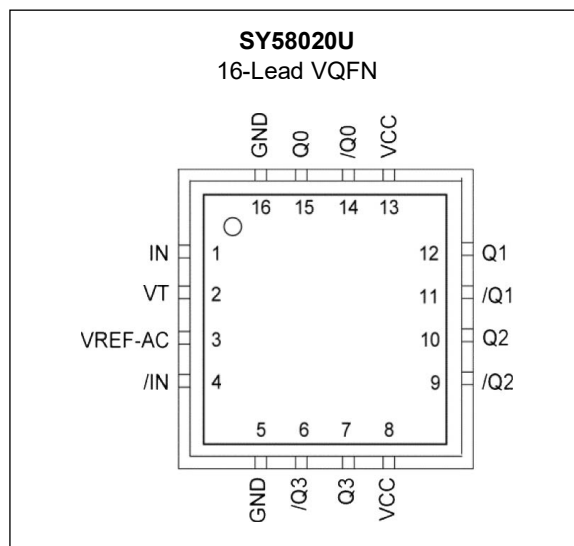
The SY58020U is a 2.5V/3.3V precision, high-speed, fully differential 1:4 CML fanout buffer. Optimized to provide four identical output copies with less than 15 ps of skew and 27 fs_{RMS} of typical additive phase jitter, the SY58020U can process clock signals as fast as 6 GHz.

The differential input includes Microchip's unique, 3-pin input termination architecture that interfaces to differential LVPECL, LVDS, and CML signals (AC- or DC-coupled) as small as 100 mV without any level-shifting or termination resistor networks in the signal path.

For AC-coupled input interface applications, an on-board output reference voltage (V_{REF-AC}) is provided to bias the VT pin. The outputs are optimized to drive 400 mV typical swing into 50Ω loads, with extremely fast rise/fall times guaranteed to be less than 60 ps.

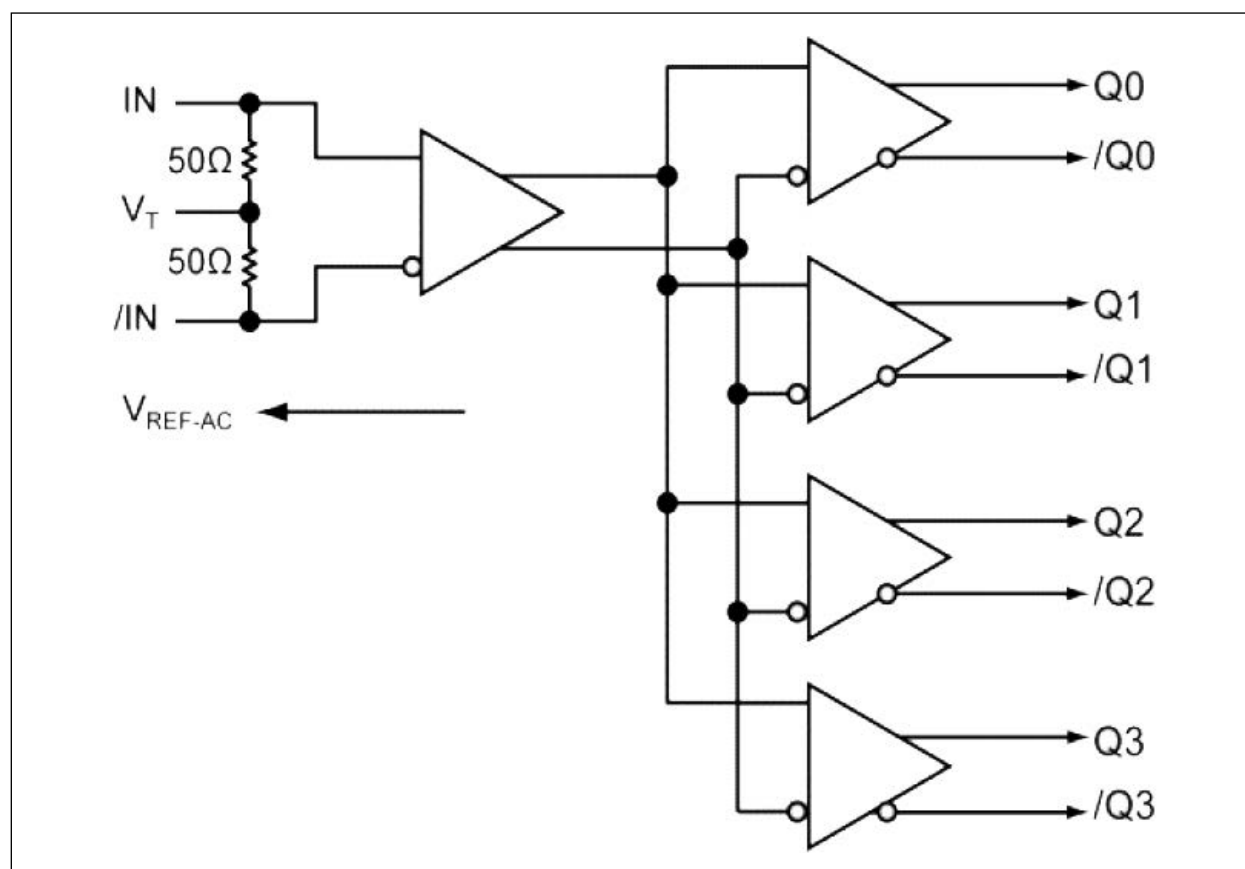
The SY58020U operates from a 2.5V \pm 5% supply or 3.3V \pm 10% supply and is guaranteed over the full industrial temperature range (-40°C to +85°C). For applications that require LVPECL outputs, consider the SY58021U or SY58022U 1:4 fanout buffer with 800 mV and 400 mV output swing, respectively. The SY58020U is part of Microchip's high-speed, Precision Edge® product line.

Package Type

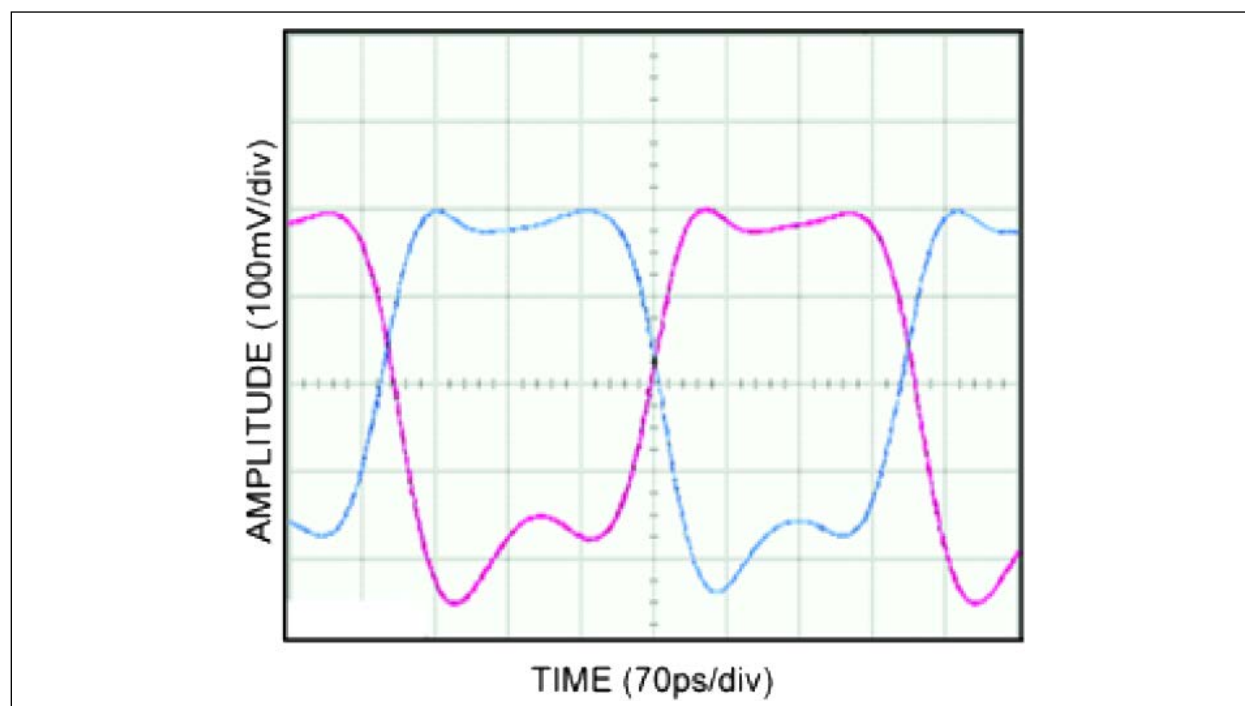


SY58020U

Functional Block Diagram



Typical Application (2 GHz)



1.0 ELECTRICAL CHARACTERISTICS

Absolute Maximum Ratings[†]

Power Supply Voltage (V_{CC})	–0.5V to +4.0V
Input Voltage (V_{IN})	–0.5V to V_{CC}
CML Output Voltage (V_{OUT})	$V_{CC} - 1.0V$ to $V_{CC} + 0.5V$
Current (V_T), Source or sink current on V_T pin	±100 mA
Input Current (I_{IN}), Source or sink current on IN, /IN	±50 mA
Current (V_{REF}), Source or sink current on V_{REF-AC} (Note 1)	±1.5 mA

Operating Ratings^{††}

Supply Voltage (V_{CC})	+2.375V to +3.60V
-----------------------------	-------------------

[†] **Notice:** Permanent device damage may occur if absolute maximum ratings are exceeded. This is a stress rating only and functional operation is not implied at conditions other than those detailed in the operational sections of this data sheet. Exposure to absolute maximum rating conditions for extended periods may affect device reliability.

^{††} **Notice:** The data sheet limits are not guaranteed if the device is operated beyond the operating ratings.

Note 1: Due to the limited drive capability, use for input of the same package only.

TABLE 1-1: DC ELECTRICAL CHARACTERISTICS

All values applicable for when $T_A = -40^{\circ}\text{C}$ to $+85^{\circ}\text{C}$ unless otherwise noted. (Note 1)						
Parameter	Symbol	Min.	Typ.	Max.	Units	Conditions
Power Supply Voltage	V_{CC}	2.375	2.500	2.625	V	$V_{CC} = 2.5V$
		3.000	3.300	3.600	V	$V_{CC} = 3.3V$
Power Supply Current	I_{CC}	—	150	180	mA	No load, $V_{CC} = \text{max.}$ (include internal 50 Ω pull-up)
Input HIGH Voltage	V_{IH}	$V_{CC} - 1.600$	—	V_{CC}	V	Note 2
Input LOW Voltage	V_{IL}	0	—	$V_{IH} - 0.100$	V	—
Input Voltage Swing	V_{IN}	0.100	—	1.700	V	See Figure 7-1
Differential Input Voltage Swing	V_{DIFF_IN}	0.200	—	3.400	V	See Figure 7-2
IN-to- V_T Resistance	R_{IN}	40	50	60	Ω	—
Output Reference Voltage	V_{REF-AC}	$V_{CC} - 1.300$	$V_{CC} - 1.200$	$V_{CC} - 1.100$	V	—
IN-to- V_T Voltage	V_{T_IN}	—	—	1.280	—	—

Note 1: The circuit is designed to meet the DC specifications shown in the above table after thermal equilibrium has been established.

2: V_{IH} (min.) not lower than 1.2V.

SY58020U

TABLE 1-2: CML DC ELECTRICAL CHARACTERISTICS

$V_{CC} = 3.3V \pm 10\%$ or $2.5V \pm 5\%$; $R_L = 100\Omega$; and $T_A = -40^\circ C$ to $+85^\circ C$, unless otherwise noted. (Note 1)						
Parameter	Symbol	Min.	Typ.	Max.	Units	Conditions
Output High Voltage	V_{OH}	$V_{CC} - 0.020$	$V_{CC} - 0.020$	V_{CC}	V	—
Output Voltage Swing	V_{OUT}	325	400	500	mV	—
Differential Output Voltage Swing	V_{DIFF_OUT}	650	800	1000	mV	—
Output Source Impedance	R_{OUT}	40	50	60	Ω	—

Note 1: The circuit is designed to meet the DC specifications shown in the above table after thermal equilibrium has been established.

TABLE 1-3: AC ELECTRICAL CHARACTERISTICS

$V_{CC} = 2.5V \pm 5\%$ and $T_A = -40^\circ C$ to $+85^\circ C$, unless otherwise noted.						
Parameter	Symbol	Min.	Typ.	Max.	Units	Conditions
Maximum Operating Frequency	f_{MAX}	6	—	—	GHz	$V_{OUT} \geq 200$ mV (Clock)
		—	10	—	Gbps	NRZ Data
Propagation Delay	t_{pd}	110	180	260	ps	—
Output-to-Output Skew	t_{SKEW}	—	4	15	ps	Note 1
Part-to-Part Skew		—	—	50	ps	Note 2
Output Rise/Fall Time 20% to 80%	t_r, t_f	20	40	60	ps	At full swing
Additive Phase Jitter	t_{JITTER}	—	27	—	fsRMS	Carrier = 622 MHz, Integration Range: 12 kHz–20 MHz
		—	128	—	fsRMS	Carrier = 156.25 MHz, Integration Range: 12 kHz–20 MHz

Note 1: Skew is measured between outputs under identical transitions.

Note 2: Skew is defined for two parts with identical power supply voltages at the same temperature and with no skew of the edges at the respective inputs.

TABLE 1-4: TEMPERATURE SPECIFICATIONS

Parameter	Symbol	Min.	Typ.	Max.	Units	Conditions
Temperature Range						
Operating Ambient Temperature	T_A	–40	—	+85	$^\circ C$	—
Lead Temperature	T_{LEAD}	—	+260	—	$^\circ C$	Soldering, 20 sec.
Storage Temperature	T_S	–65	—	+150	$^\circ C$	—
Package Thermal Resistance						
VQFN, Still Air	θ_{JA}	—	+60	—	$^\circ C/W$	—
VQFN, 500 lfpm		—	+54	—	$^\circ C/W$	—
VQFN, Junction-to-Board (Note 1)	Ψ_{JB}	—	+33	—	$^\circ C/W$	—

Note 1: Thermal performance assumes exposed pad is soldered (or equivalent) to the device's most negative potential on the PCB.

2.0 PIN DESCRIPTIONS

The descriptions of the pins are listed in [Table 2-1](#).

TABLE 2-1: PIN FUNCTION TABLE

Pin Number	Pin Name	Description
1, 4	IN, /IN	Differential Input: This input pair receives the signal to be buffered. Each pin of this pair internally terminates with 50Ω to the VT pin. Note that this input will default to an indeterminate state if left open. See “Input Interface Applications” section.
2	VT	Input Termination Center-Tap: Each input terminates to this pin. The VT pin provides a center-tap for each input (IN, /IN) to the termination network for maximum interface flexibility. See “Input Interface Applications” section.
3	VREF-AC	Reference Output Voltage: This output biases to $V_{CC} - 1.2V$. It is used when AC-coupling to differential inputs. Connect VREF-AC directly to the VT pin. Bypass with 0.01 μF low ESR capacitor to VCC. See “Input Interface Applications” section.
8, 13	VCC	Positive Power Supply: Bypass with 0.1 μF 0.01 μF low ESR capacitors as close to the pins as possible.
5, 16	GND, Exposed Pad	Ground. Exposed pad must be connected to a ground plane that is the same potential as the ground pin.
14, 15 11, 12 9, 10 6, 7	/Q0, Q0 /Q1, Q1 /Q2, Q2 /Q3, Q3	CML Differential Output Pairs: Differential buffered output copy of the input signal. The output swing is typically 400 mV into 50Ω load. Normally terminate CML output pairs with 100Ω across Q and /Q outputs at the receiving end. Unused output pairs may be left floating with no impact on jitter or skew. See “CML Output Termination” section.

3.0 TYPICAL CHARACTERISTICS

$V_{CC} = 2.5V$; $GND = 0$; $V_{IN} = 100\text{ mV}$; and $T_A = 25^{\circ}C$, unless otherwise noted.

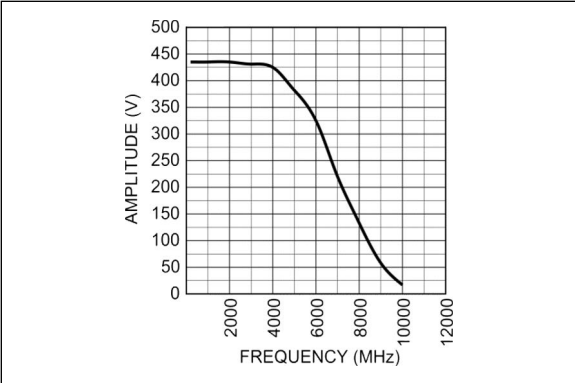


FIGURE 3-1: AMPLITUDE VS. FREQUENCY.

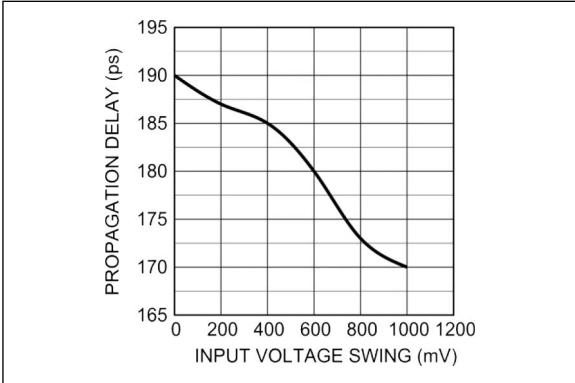


FIGURE 3-3: PROPAGATION DELAY VS. INPUT VOLTAGE SWING.

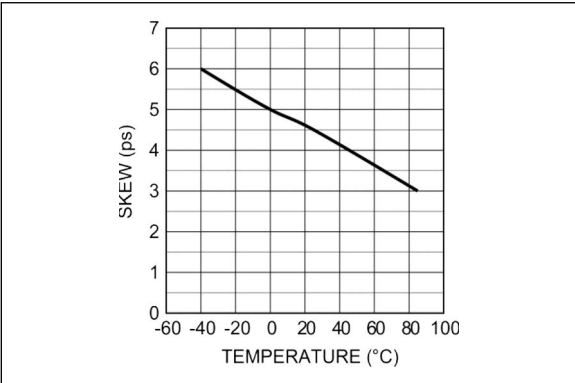


FIGURE 3-2: SKEW VS. TEMPERATURE.

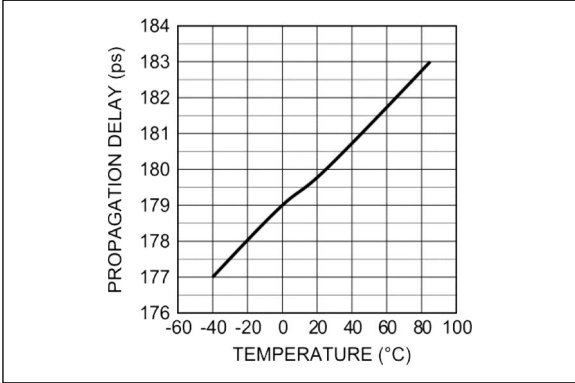


FIGURE 3-4: PROPAGATION DELAY VS. TEMPERATURE.

4.0 TYPICAL OUTPUT WAVEFORMS

$V_{CC} = 2.5V$; $GND = 0$; $V_{IN} = 100\text{ mV}$; and $T_A = 25^\circ\text{C}$, unless otherwise noted.

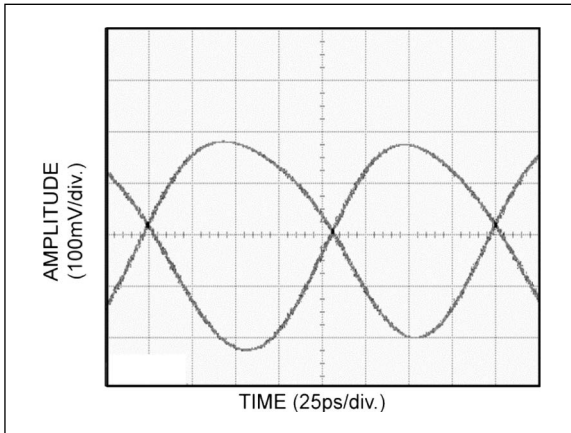


FIGURE 4-1: 5 GHz OUTPUT.

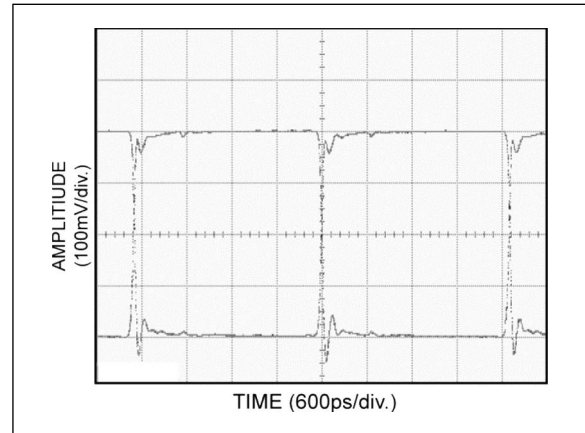


FIGURE 4-2: 200 MHz OUTPUT.

5.0 ADDITIVE PHASE NOISE PLOTS

V_{CC} = 3.3V; GND = 0; and T_A = 25°C, unless otherwise noted.

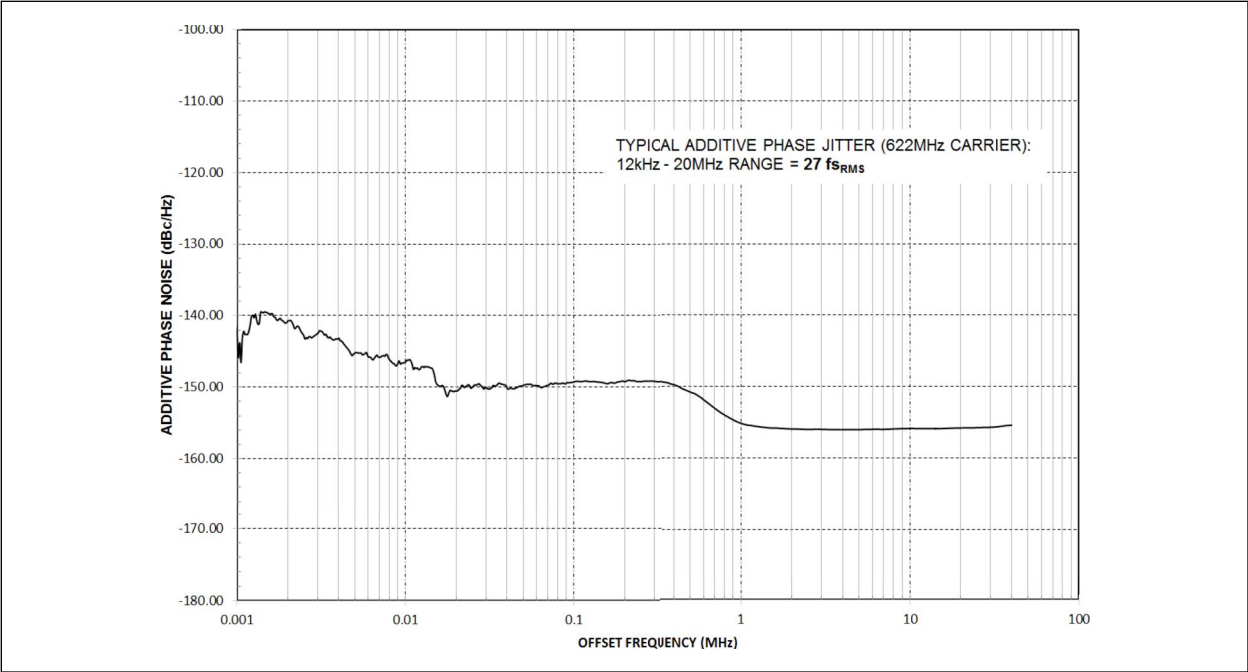


FIGURE 5-1: TYPICAL ADDITIVE PHASE JITTER (622 MHZ CARRIER), 12 KHZ–20 MHZ RANGE = 27 FS_{RMS}.

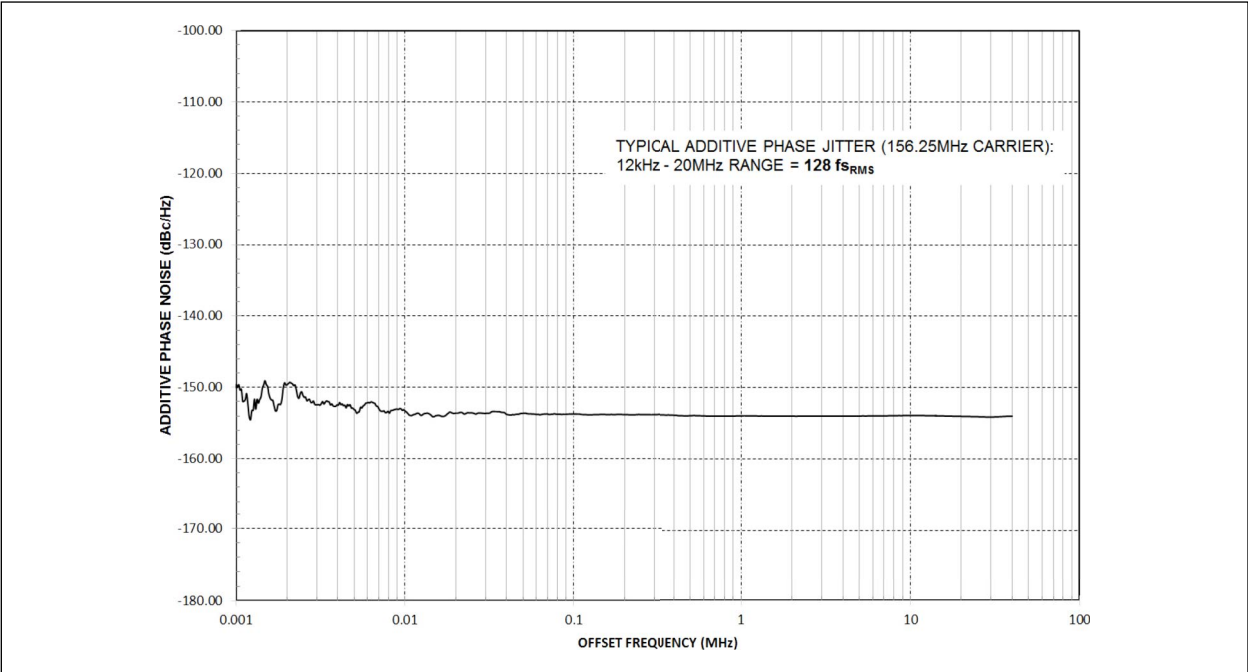


FIGURE 5-2: TYPICAL ADDITIVE PHASE JITTER (156.25 MHZ CARRIER), 12 KHZ–20 MHZ RANGE = 128 FS_{RMS}.

6.0 CML OUTPUT TERMINATION

Figure 6-1 and Figure 6-2 illustrate a CML output using both the AC-coupled and DC-coupled configuration. All outputs of the SY58020U are 50Ω with a 16 mA current source.

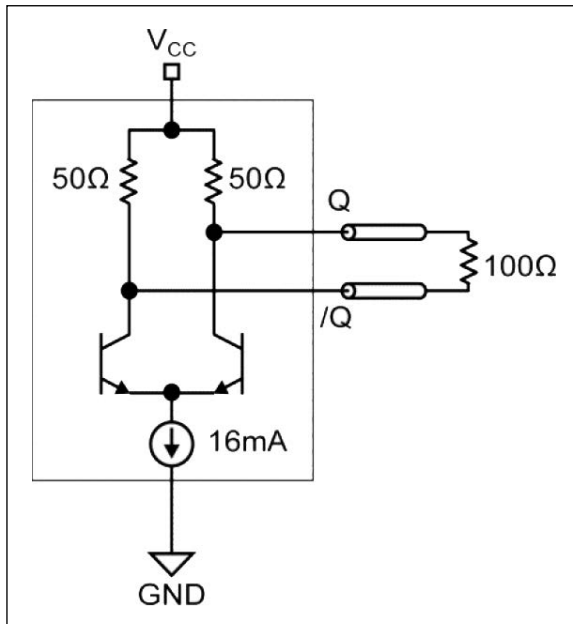


FIGURE 6-1: CML DC-COUPLED OUTPUT.

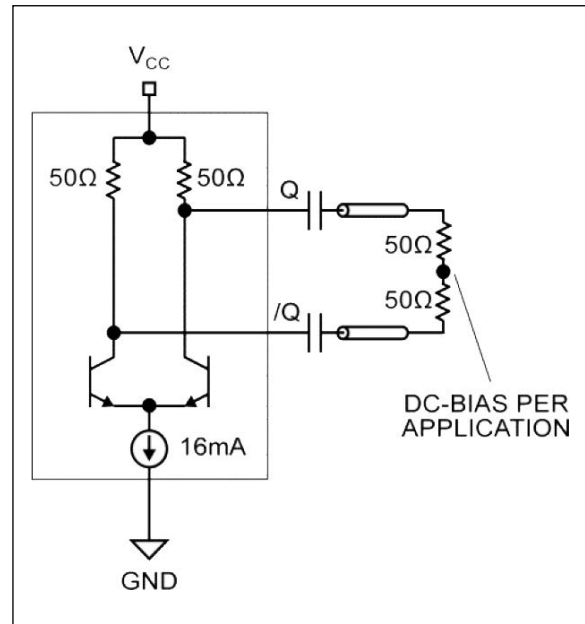


FIGURE 6-2: CML AC-COUPLED TERMINATION.

7.0 SINGLE-ENDED AND DIFFERENTIAL SWINGS

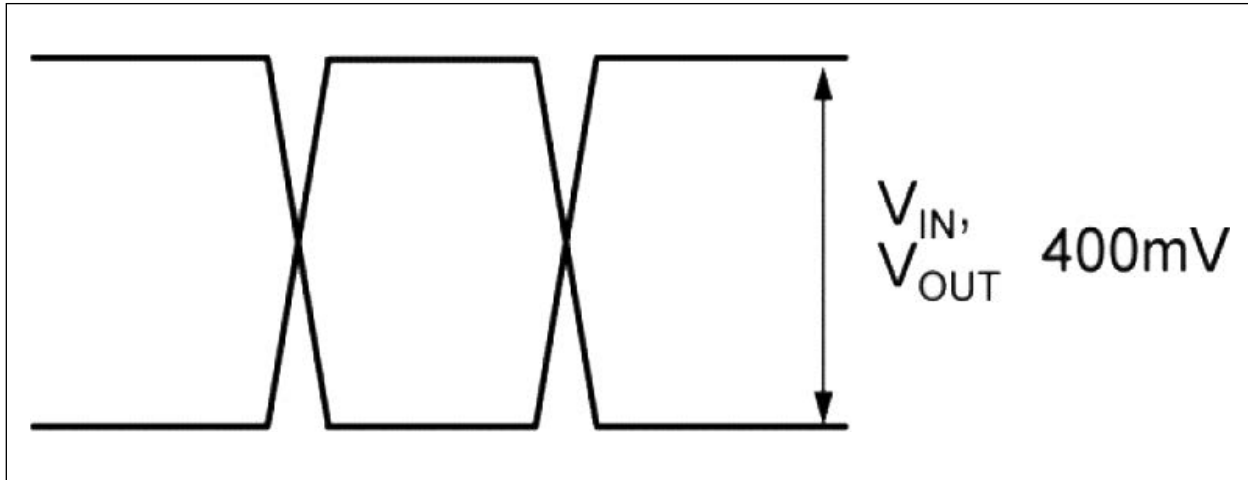


FIGURE 7-1: SINGLE-ENDED VOLTAGE SWING.

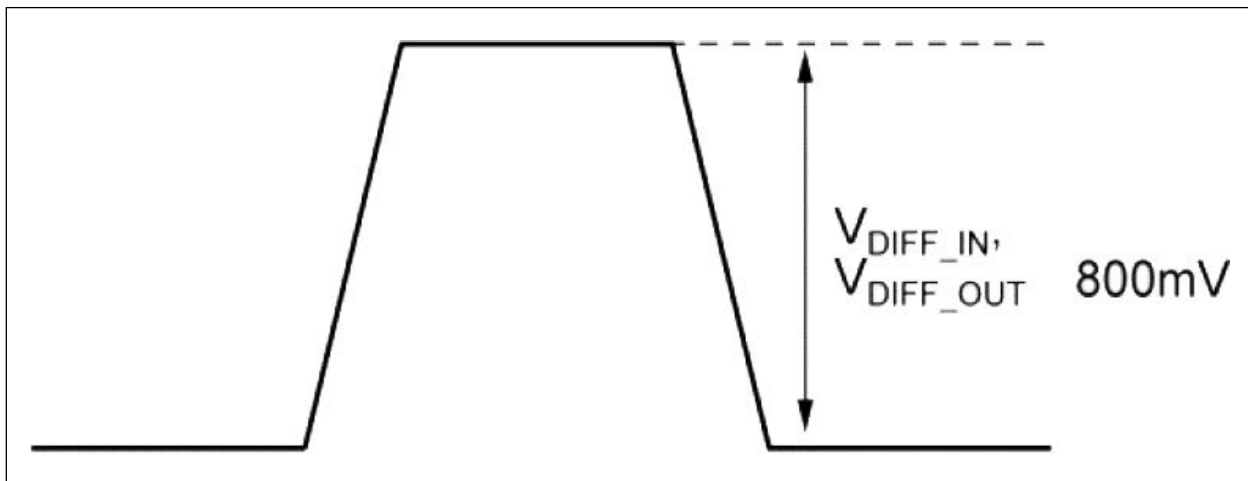


FIGURE 7-2: DIFFERENTIAL VOLTAGE SWING.

8.0 TIMING DIAGRAM

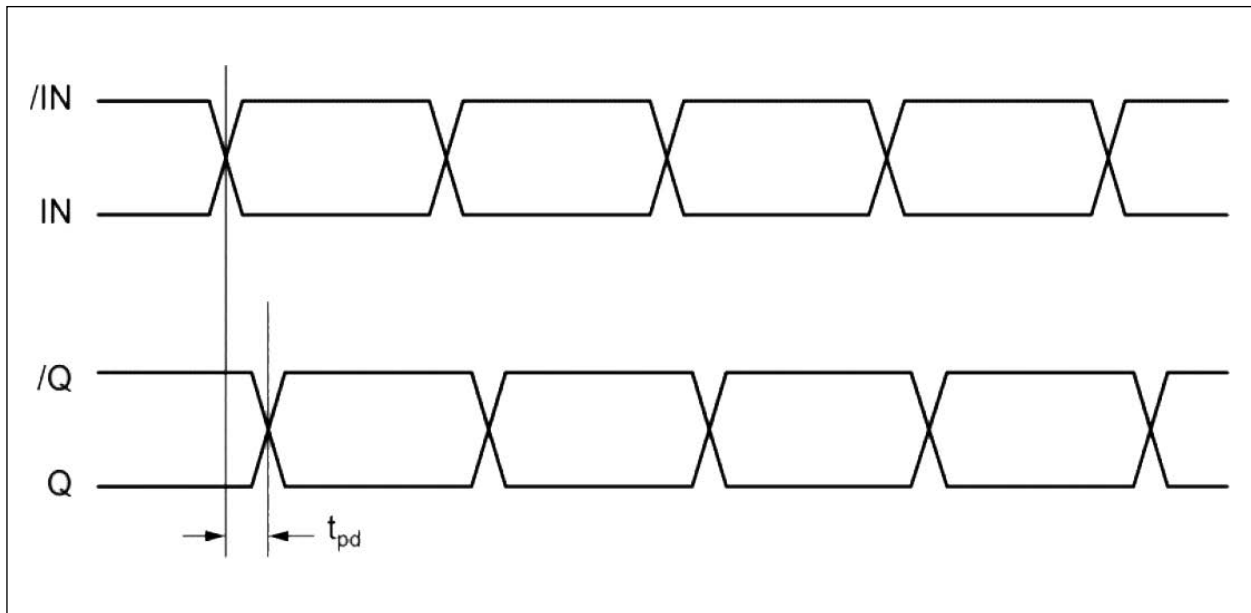


FIGURE 8-1: TIMING DIAGRAM.

9.0 INPUT STAGE

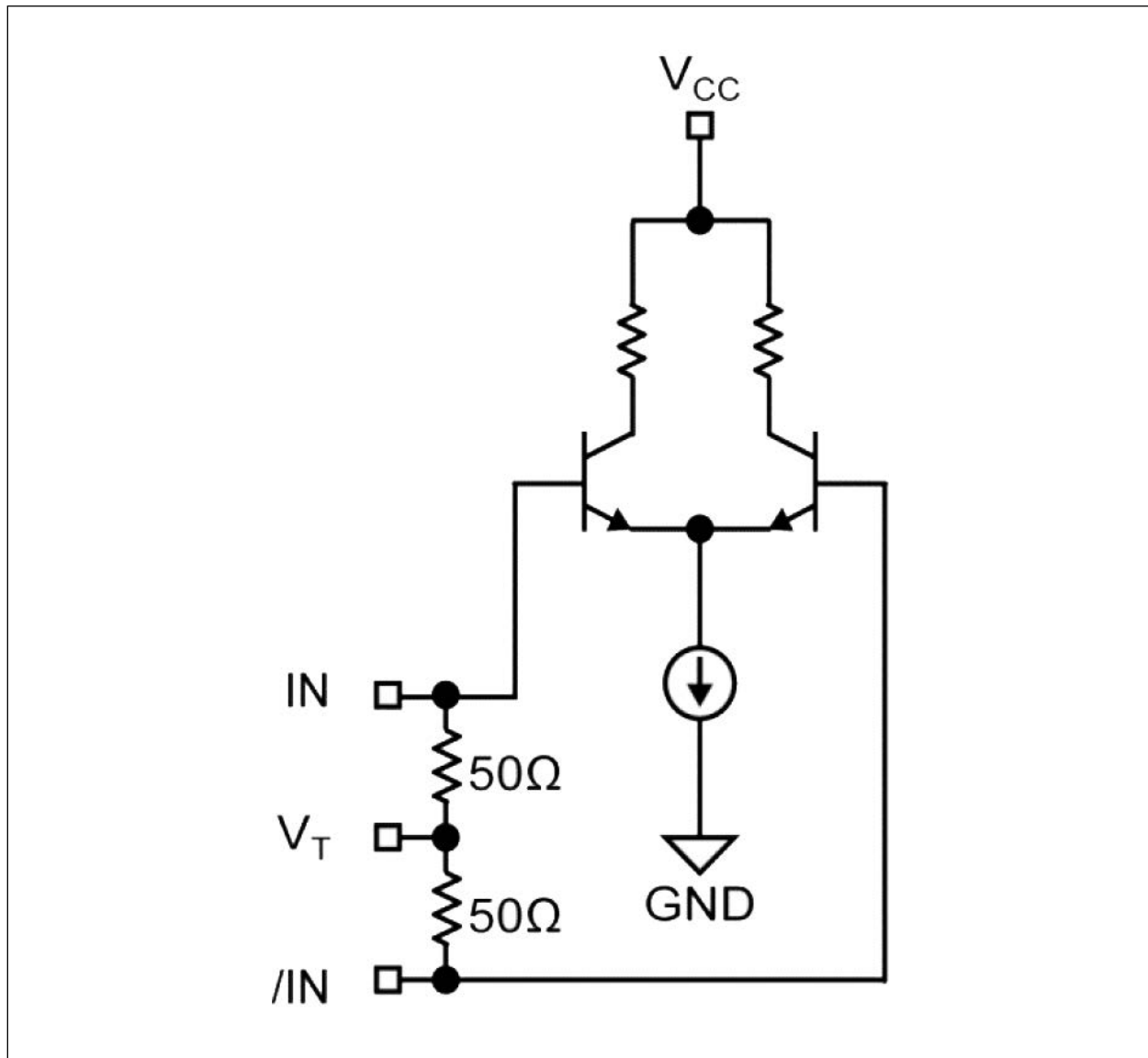


FIGURE 9-1: SIMPLIFIED DIFFERENTIAL INPUT BUFFER.

10.0 INPUT INTERFACE APPLICATIONS

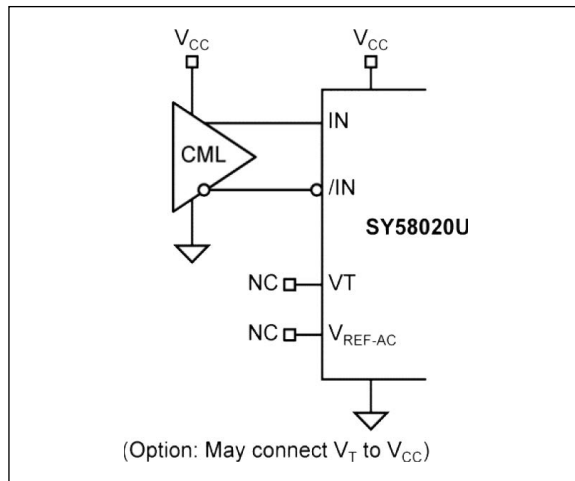


FIGURE 10-1: DC-COUPLED CML INPUT INTERFACE.

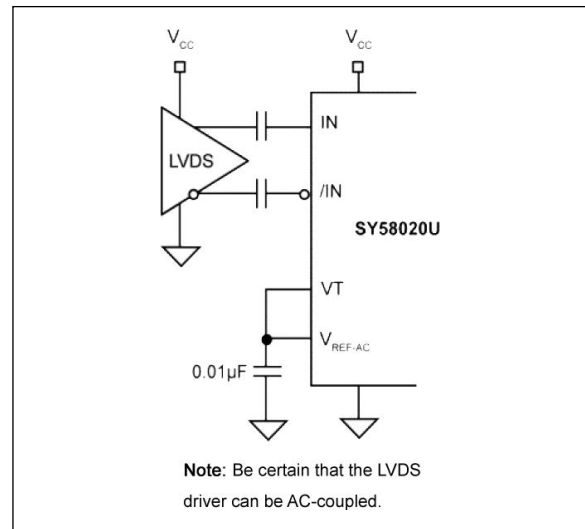


FIGURE 10-4: AC-COUPLED LVDS INPUT INTERFACE.

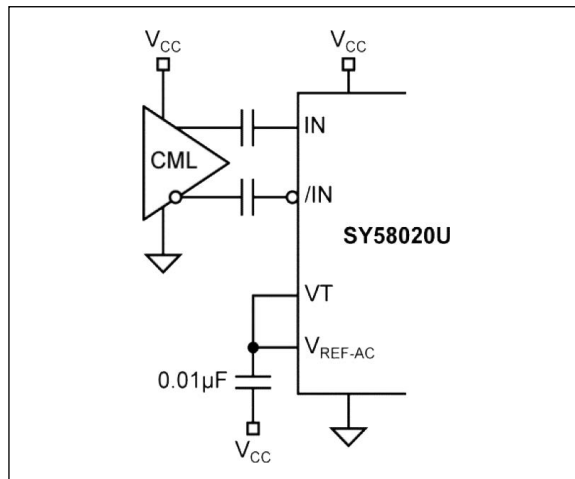


FIGURE 10-2: AC-COUPLED CML INPUT INTERFACE.

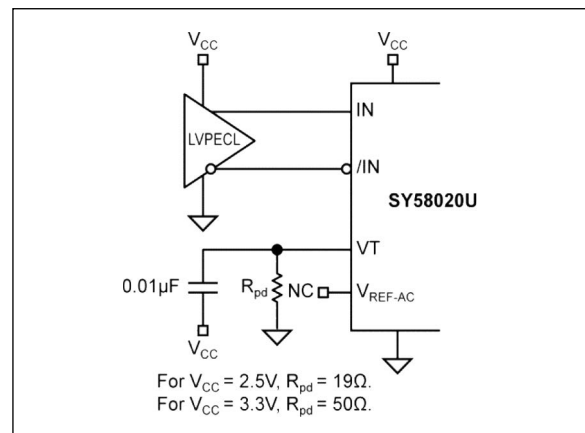


FIGURE 10-5: DC-COUPLED LVPECL INPUT INTERFACE.

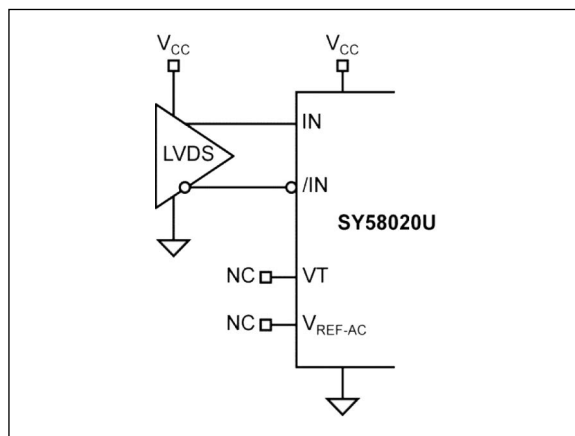


FIGURE 10-3: DC-COUPLED LVDS INPUT INTERFACE.

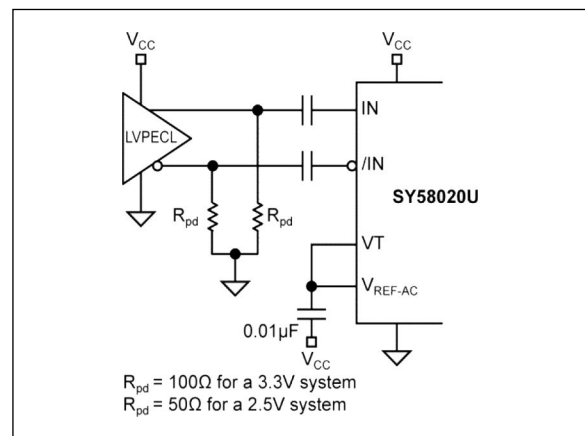
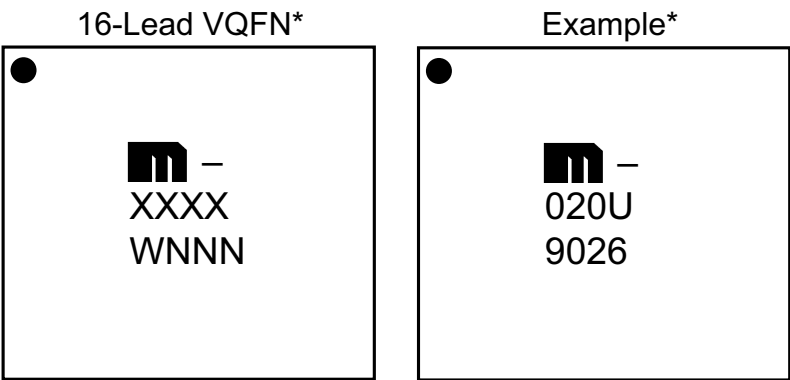


FIGURE 10-6: AC-COUPLED LVPECL INPUT INTERFACE.

11.0 PACKAGING INFORMATION

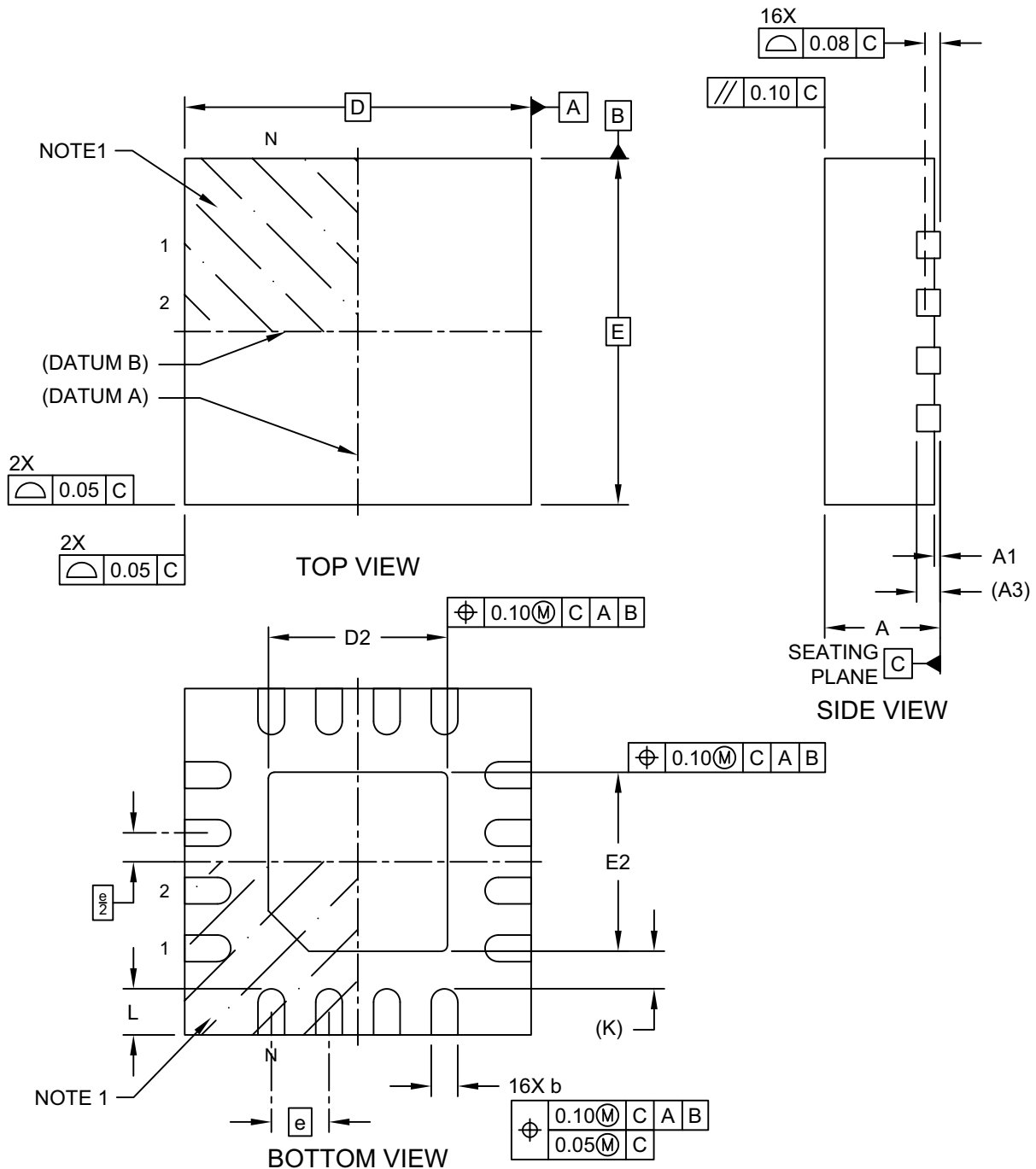
11.1 Package Marking Information



Legend:	XX...X	Product code or customer-specific information
	W	Week code
	NNN	Alphanumeric traceability code (week)
	*	This package is Pb-free. The Pb-free JEDEC designator can be found on the outer packaging for this package.
	•	Pin one index is identified by a dot
Note:	In the event the full Microchip part number cannot be marked on one line, it will be carried over to the next line, thus limiting the number of available characters for customer-specific information. Package may or may not include the corporate logo.	
	Underbar (_) and/or Overbar (¯) symbol may not be to scale.	

16-Lead 3 mm × 3 mm VQFN [NCA] Package Outline and Recommended Land Pattern

Note: For the most current package drawings, please see the Microchip Packaging Specification located at <http://www.microchip.com/packaging>

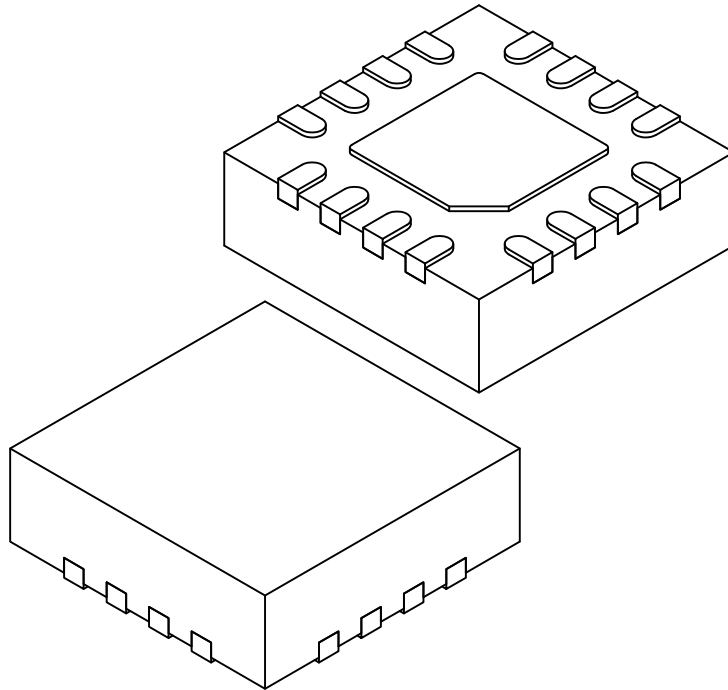


Microchip Technology Drawing C04-1103-NCA Rev C Sheet 1 of 2

SY58020U

16-Lead 3 mm × 3 mm VQFN [NCA] Package Outline and Recommended Land Pattern

Note: For the most current package drawings, please see the Microchip Packaging Specification located at <http://www.microchip.com/packaging>



Units		MILLIMETERS		
Dimension Limits		MIN	NOM	MAX
Number of Terminals	N	16		
Pitch	e	0.50 BSC		
Overall Height	A	0.80	0.90	1.00
Standoff	A1	0.00	0.02	0.05
Terminal Thickness	A3	0.203 REF		
Overall Length	D	3.00 BSC		
Exposed Pad Length	D2	1.50	1.55	1.60
Overall Width	E	3.00 BSC		
Exposed Pad Width	E2	1.50	1.55	1.60
Terminal Width	b	0.18	0.23	0.28
Terminal Length	L	0.35	0.40	0.45
Terminal-to-Exposed-Pad	K	0.33 REF		

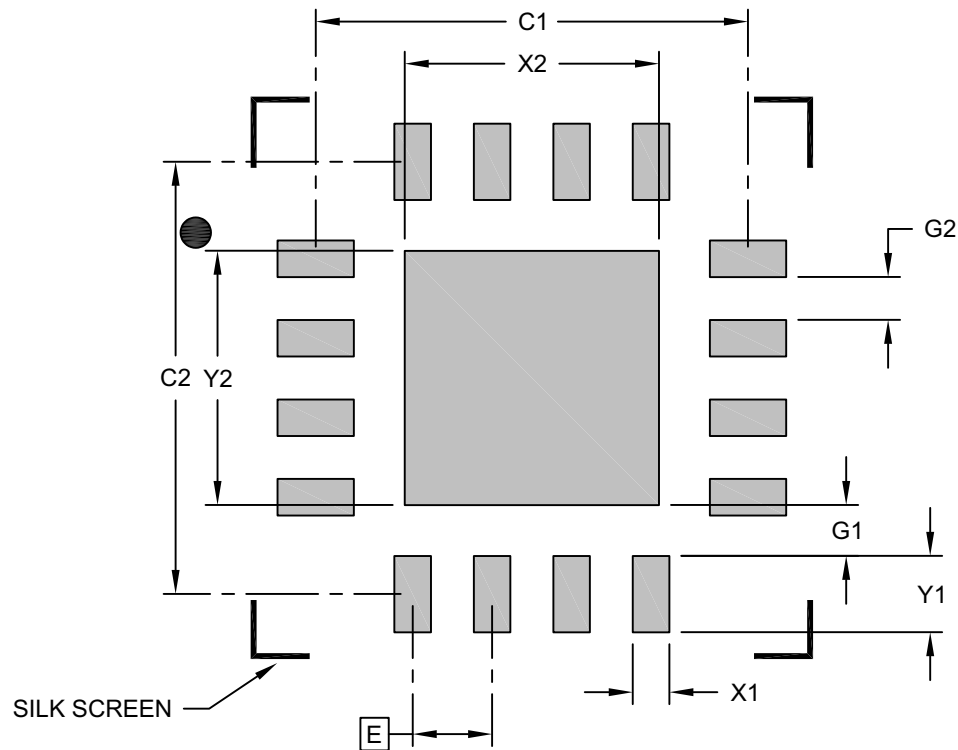
Notes:

- Pin 1 visual index feature may vary, but must be located within the hatched area.
- Package is saw singulated
- Dimensioning and tolerancing per ASME Y14.5M
BSC: Basic Dimension. Theoretically exact value shown without tolerances.
REF: Reference Dimension, usually without tolerance, for information purposes only.

Microchip Technology Drawing C04-1103-NCA Rev C Sheet 2 of 2

16-Lead 3 mm × 3 mm VQFN [NCA] Package Outline and Recommended Land Pattern

Note: For the most current package drawings, please see the Microchip Packaging Specification located at <http://www.microchip.com/packaging>



RECOMMENDED LAND PATTERN

Units		MILLIMETERS		
Dimension Limits		MIN	NOM	MAX
Contact Pitch	E	0.50 BSC		
Center Pad Width	X2			1.60
Center Pad Length	Y2			1.60
Contact Pad Spacing	C1		2.72	
Contact Pad Spacing	C2		2.72	
Contact Pad Width (Xnn)	X1			0.23
Contact Pad Length (Xnn)	Y1			0.48
Contact Pad to Center Pad (Xnn)	G1	0.32		
Contact Pad to Contact Pad (Xnn)	G2	0.27		

Notes:

- Dimensioning and tolerancing per ASME Y14.5M
BSC: Basic Dimension. Theoretically exact value shown without tolerances.

Microchip Technology Drawing C04-3103-NCA Rev C

SY58020U

NOTES:

APPENDIX A: REVISION HISTORY

Revision A (February 2024)

- Converted Micrel data sheet for SY58020U to Microchip format as DS20006872A.
- Minor text changes throughout.

SY58020U

NOTES:

PRODUCT IDENTIFICATION SYSTEM

To order or obtain information, e.g., on pricing or delivery, contact your local Microchip representative or sales office.

<u>PART NO.</u>	<u>X</u>	<u>X</u>	<u>X</u>	<u>-XX</u>
Device	Supply Voltage Range	Package	Temperature Range	Special Processing
Device:	SY58020	=	6 GHz, 1:4 CML Fanout Buffer/Translator with Internal I/O Termination	
Voltage Option:	U	=	2.5V/3.3V	
Package:	M	=	16-Lead VQFN	
Temperature Range:	G	=	-40°C to 85°C	
Special Processing:	<blank>	=	100/Tube	
	TR	=	1,000/Reel	

Examples:

a) **SY58020UMG**
2.5V/3.3V, 16-Lead VQFN, -40°C to 85°C, 100/Tube

b) **SY58020UMG-TR**
2.5V/3.3V, 16-Lead VQFN, -40°C to 85°C, 1,000/Reel

SY58020U

NOTES:

Note the following details of the code protection feature on Microchip products:

- Microchip products meet the specifications contained in their particular Microchip Data Sheet.
 - Microchip believes that its family of products is secure when used in the intended manner, within operating specifications, and under normal conditions.
 - Microchip values and aggressively protects its intellectual property rights. Attempts to breach the code protection features of Microchip product is strictly prohibited and may violate the Digital Millennium Copyright Act.
 - Neither Microchip nor any other semiconductor manufacturer can guarantee the security of its code. Code protection does not mean that we are guaranteeing the product is "unbreakable" Code protection is constantly evolving. Microchip is committed to continuously improving the code protection features of our products.
-

This publication and the information herein may be used only with Microchip products, including to design, test, and integrate Microchip products with your application. Use of this information in any other manner violates these terms. Information regarding device applications is provided only for your convenience and may be superseded by updates. It is your responsibility to ensure that your application meets with your specifications. Contact your local Microchip sales office for additional support or, obtain additional support at <https://www.microchip.com/en-us/support/design-help/client-support-services>.

THIS INFORMATION IS PROVIDED BY MICROCHIP "AS IS". MICROCHIP MAKES NO REPRESENTATIONS OR WARRANTIES OF ANY KIND WHETHER EXPRESS OR IMPLIED, WRITTEN OR ORAL, STATUTORY OR OTHERWISE, RELATED TO THE INFORMATION INCLUDING BUT NOT LIMITED TO ANY IMPLIED WARRANTIES OF NON-INFRINGEMENT, MERCHANTABILITY, AND FITNESS FOR A PARTICULAR PURPOSE, OR WARRANTIES RELATED TO ITS CONDITION, QUALITY, OR PERFORMANCE.

IN NO EVENT WILL MICROCHIP BE LIABLE FOR ANY INDIRECT, SPECIAL, PUNITIVE, INCIDENTAL, OR CONSEQUENTIAL LOSS, DAMAGE, COST, OR EXPENSE OF ANY KIND WHATSOEVER RELATED TO THE INFORMATION OR ITS USE, HOWEVER CAUSED, EVEN IF MICROCHIP HAS BEEN ADVISED OF THE POSSIBILITY OR THE DAMAGES ARE FORESEEABLE. TO THE FULLEST EXTENT ALLOWED BY LAW, MICROCHIP'S TOTAL LIABILITY ON ALL CLAIMS IN ANY WAY RELATED TO THE INFORMATION OR ITS USE WILL NOT EXCEED THE AMOUNT OF FEES, IF ANY, THAT YOU HAVE PAID DIRECTLY TO MICROCHIP FOR THE INFORMATION.

Use of Microchip devices in life support and/or safety applications is entirely at the buyer's risk, and the buyer agrees to defend, indemnify and hold harmless Microchip from any and all damages, claims, suits, or expenses resulting from such use. No licenses are conveyed, implicitly or otherwise, under any Microchip intellectual property rights unless otherwise stated.

Trademarks

The Microchip name and logo, the Microchip logo, Adaptec, AVR, AVR logo, AVR Freaks, BesTime, BitCloud, CryptoMemory, CryptoRF, dsPIC, flexPWR, HELDO, IGLOO, JukeBlox, KeeLoq, Klear, LANCheck, LinkMD, maXStylus, maXTouch, MediaLB, megaAVR, Microsemi, Microsemi logo, MOST, MOST logo, MPLAB, OptoLyzer, PIC, picoPower, PICSTART, PIC32 logo, PolarFire, Prochip Designer, QTouch, SAM-BA, SenGenuity, SpyNIC, SST, SST Logo, SuperFlash, Symmetricon, SyncServer, Tachyon, TimeSource, tinyAVR, UNI/O, Vectron, and XMEGA are registered trademarks of Microchip Technology Incorporated in the U.S.A. and other countries.

AgileSwitch, ClockWorks, The Embedded Control Solutions Company, EtherSynch, Flashtec, Hyper Speed Control, HyperLight Load, Libero, motorBench, mTouch, Powermite 3, Precision Edge, ProASIC, ProASIC Plus, ProASIC Plus logo, Quiet-Wire, SmartFusion, SyncWorld, TimeCesium, TimeHub, TimePictra, TimeProvider, and ZL are registered trademarks of Microchip Technology Incorporated in the U.S.A.

Adjacent Key Suppression, AKS, Analog-for-the-Digital Age, Any Capacitor, AnyIn, AnyOut, Augmented Switching, BlueSky, BodyCom, Clockstudio, CodeGuard, CryptoAuthentication, CryptoAutomotive, CryptoCompanion, CryptoController, dsPICDEM, dsPICDEM.net, Dynamic Average Matching, DAM, ECAN, Espresso T1S, EtherGREEN, EyeOpen, GridTime, IdealBridge, IGaT, In-Circuit Serial Programming, ICSP, INICnet, Intelligent Paralleling, IntelliMOS, Inter-Chip Connectivity, JitterBlocker, Knob-on-Display, MarginLink, maxCrypto, maxView, memBrain, Mindi, MiWi, MPASM, MPF, MPLAB Certified logo, MPLIB, MPLINK, mSiC, MultiTRAK, NetDetach, Omniscient Code Generation, PICDEM, PICDEM.net, PICkit, PICtail, Power MOS IV, Power MOS 7, PowerSmart, PureSilicon, QMatrix, REAL ICE, Ripple Blocker, RTAX, RTG4, SAM-ICE, Serial Quad I/O, simpleMAP, SimpliPHY, SmartBuffer, SmartHLS, SMART-I.S., storClad, SQL, SuperSwitcher, SuperSwitcher II, Switchtec, SynchroPHY, Total Endurance, Trusted Time, TSHARC, Turing, USBCheck, VariSense, VectorBlox, VeriPHY, ViewSpan, WiperLock, XpressConnect, and ZENA are trademarks of Microchip Technology Incorporated in the U.S.A. and other countries.

SQTP is a service mark of Microchip Technology Incorporated in the U.S.A.

The Adaptec logo, Frequency on Demand, Silicon Storage Technology, and Symmcom are registered trademarks of Microchip Technology Inc. in other countries.

GestIC is a registered trademark of Microchip Technology Germany II GmbH & Co. KG, a subsidiary of Microchip Technology Inc., in other countries.

All other trademarks mentioned herein are property of their respective companies.

© 2024, Microchip Technology Incorporated and its subsidiaries.

All Rights Reserved.

ISBN: 978-1-6683-4077-6

For information regarding Microchip's Quality Management Systems, please visit www.microchip.com/quality.

Worldwide Sales and Service

AMERICAS

Corporate Office
2355 West Chandler Blvd.
Chandler, AZ 85224-6199
Tel: 480-792-7200
Fax: 480-792-7277
Technical Support:
<http://www.microchip.com/support>
Web Address:
www.microchip.com

Atlanta
Duluth, GA
Tel: 678-957-9614
Fax: 678-957-1455

Austin, TX
Tel: 512-257-3370

Boston
Westborough, MA
Tel: 774-760-0087
Fax: 774-760-0088

Chicago
Itasca, IL
Tel: 630-285-0071
Fax: 630-285-0075

Dallas
Addison, TX
Tel: 972-818-7423
Fax: 972-818-2924

Detroit
Novi, MI
Tel: 248-848-4000

Houston, TX
Tel: 281-894-5983

Indianapolis
Noblesville, IN
Tel: 317-773-8323
Fax: 317-773-5453
Tel: 317-536-2380

Los Angeles
Mission Viejo, CA
Tel: 949-462-9523
Fax: 949-462-9608
Tel: 951-273-7800

Raleigh, NC
Tel: 919-844-7510

New York, NY
Tel: 631-435-6000

San Jose, CA
Tel: 408-735-9110
Tel: 408-436-4270

Canada - Toronto
Tel: 905-695-1980
Fax: 905-695-2078

ASIA/PACIFIC

Australia - Sydney
Tel: 61-2-9868-6733

China - Beijing
Tel: 86-10-8569-7000

China - Chengdu
Tel: 86-28-8665-5511

China - Chongqing
Tel: 86-23-8980-9588

China - Dongguan
Tel: 86-769-8702-9880

China - Guangzhou
Tel: 86-20-8755-8029

China - Hangzhou
Tel: 86-571-8792-8115

China - Hong Kong SAR
Tel: 852-2943-5100

China - Nanjing
Tel: 86-25-8473-2460

China - Qingdao
Tel: 86-532-8502-7355

China - Shanghai
Tel: 86-21-3326-8000

China - Shenyang
Tel: 86-24-2334-2829

China - Shenzhen
Tel: 86-755-8864-2200

China - Suzhou
Tel: 86-186-6233-1526

China - Wuhan
Tel: 86-27-5980-5300

China - Xian
Tel: 86-29-8833-7252

China - Xiamen
Tel: 86-592-2388138

China - Zhuhai
Tel: 86-756-3210040

ASIA/PACIFIC

India - Bangalore
Tel: 91-80-3090-4444

India - New Delhi
Tel: 91-11-4160-8631

India - Pune
Tel: 91-20-4121-0141

Japan - Osaka
Tel: 81-6-6152-7160

Japan - Tokyo
Tel: 81-3-6880-3770

Korea - Daegu
Tel: 82-53-744-4301

Korea - Seoul
Tel: 82-2-554-7200

Malaysia - Kuala Lumpur
Tel: 60-3-7651-7906

Malaysia - Penang
Tel: 60-4-227-8870

Philippines - Manila
Tel: 63-2-634-9065

Singapore
Tel: 65-6334-8870

Taiwan - Hsin Chu
Tel: 886-3-577-8366

Taiwan - Kaohsiung
Tel: 886-7-213-7830

Taiwan - Taipei
Tel: 886-2-2508-8600

Thailand - Bangkok
Tel: 66-2-694-1351

Vietnam - Ho Chi Minh
Tel: 84-28-5448-2100

EUROPE

Austria - Wels
Tel: 43-7242-2244-39
Fax: 43-7242-2244-393

Denmark - Copenhagen
Tel: 45-4485-5910
Fax: 45-4485-2829

Finland - Espoo
Tel: 358-9-4520-820

France - Paris
Tel: 33-1-69-53-63-20
Fax: 33-1-69-30-90-79

Germany - Garching
Tel: 49-8931-9700

Germany - Haan
Tel: 49-2129-3766400

Germany - Heilbronn
Tel: 49-7131-72400

Germany - Karlsruhe
Tel: 49-721-625370

Germany - Munich
Tel: 49-89-627-144-0
Fax: 49-89-627-144-44

Germany - Rosenheim
Tel: 49-8031-354-560

Israel - Ra'anana
Tel: 972-9-744-7705

Italy - Milan
Tel: 39-0331-742611
Fax: 39-0331-466781

Italy - Padova
Tel: 39-049-7625286

Netherlands - Drunen
Tel: 31-416-690399
Fax: 31-416-690340

Norway - Trondheim
Tel: 47-7288-4388

Poland - Warsaw
Tel: 48-22-3325737

Romania - Bucharest
Tel: 40-21-407-87-50

Spain - Madrid
Tel: 34-91-708-08-90
Fax: 34-91-708-08-91

Sweden - Gothenberg
Tel: 46-31-704-60-40

Sweden - Stockholm
Tel: 46-8-5090-4654

UK - Wokingham
Tel: 44-118-921-5800
Fax: 44-118-921-5820

Mouser Electronics

Authorized Distributor

Click to View Pricing, Inventory, Delivery & Lifecycle Information:

[Microchip:](#)

[SY58020UMG](#) [SY58020UMG-TR](#)