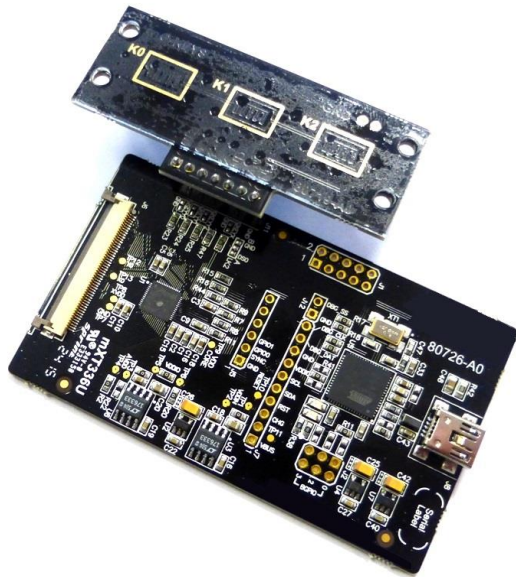


**ATEVK-MXT336U-A Kit Contents**

1x 4.5" Touchscreen Assembly (75054)
1x ATMXT336U PCB (80726)
4x Self Adhesive Feet
1x G-Key PCB (80719)
1x USB Memory Stick (Documentation, Software, Schematics)
1x USB Cable
1x Passive Stylus
1x Copper Flex Panel (80364)
1x Ground Connection Wire
1x ATEVK-MXT336U-A Quickstart Guide



**ATEVK-MXT336U-A  
Evaluation Kit  
Information Sheet**

### Using the Evaluation Kit

This kit (ATEVK-MXT336U-A) is for the evaluation and development of Microchip maXTouch™ applications using the ATMXT336U Integrated Circuit (IC).

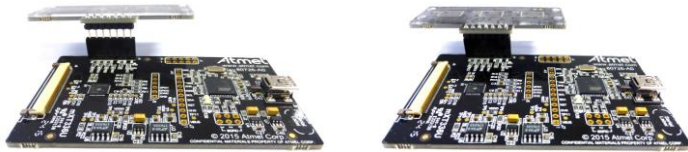
In this example, the device can be connected through a flexible printed circuit (FPC) to an Indium Tin Oxide (ITO) glass touchscreen (75054). A set of self-adhesive feet have been supplied with the kit to allow for the touchscreen assembly to be used on the desk or bench. Alternatively, the touchscreen assembly may be mounted to a suitable display for evaluation of *on-screen* performance.



Caution: This unit contains a glass panel in front of the touchscreen. Whilst the glass is strengthened to reduce the risk of breakage, care should be taken not to subject the glass to excessive force in order to reduce the risk of glass breakage that may result in minor or moderate injury.

### Assembling the Evaluation Kit

Attach the G-Key PCB (80719) to the ATMXT336U PCB (80726) by aligning the pins and sliding into place.



### Copper Flex Panel

The supplied adhesive flex panel, which can be cut to size, can be used to simulate display load. Connect it to any available GND pin. Before adhering the panel, remember to remove any protective coating from the touchscreen. The supplied configuration is tuned for operation with the flex panel in place, for optimum performance please use the flex panel.

### Evaluation Software

A PC application: maXTouch Studio Lite is included to facilitate evaluation of the product. The information sheet gives only a brief overview of the maXTouch Studio operation. The *Lite* version of the tool supplied on the USB memory stick allows viewing of messages and objects and loading of the configuration files. To tune and change objects, a full version of the tool is available for download. Please contact your local Microchip representative for details.

- Insert the supplied USB Memory Stick into the PC. Double click and install the software for maXTouch Studio.
- Connect the supplied USB cable to the ATMXT336U PCB and to any available USB port.

Note: If this is the first time the tool has been run, then perform the following steps:

- In maXTouch Studio toolbar select the menu Server > Load Bridge Client
- Open the BridgeClients folder and select BridgeClientNet.exe
- Click the "Open" button – the Bridge Client will load.
- Select Server > Hide Bridge Client (do NOT close (red X) the Bridge Client window).

### Object Explorer

The maXTouch Studio application via the Object Explorer allows for various operating parameters to be configured. The Object Explorer is also the means by which different configurations, such as touch keys or touchscreen format can be loaded into the ATMXT336U device. The explorer only displays the objects present in the connected device.

Before making changes to individual parameters, it is advisable to save the current default settings.

- This can be done from the Save Config option in the Configuration menu in the maXTouch Studio toolbar.
- To change a parameter, click on the object you wish to alter (e.g. Multiple Touch Touchscreen T100).
- After changing any parameters, click on the Write button of the active window to apply the new settings.

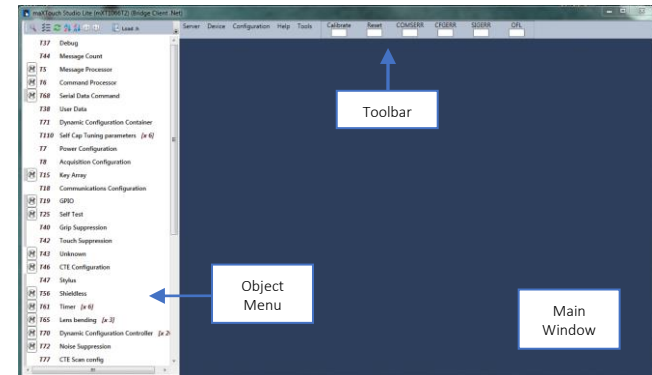
NOTE: Settings will revert to their defaults when you unplug and re-plug the USB cable unless you click on the Backup button in the Device menu on maXTouch Studio toolbar.

- To view touches graphically use Touch Reporter in the Tools menu in the toolbar.

### Restoring Factory Configuration

If required, the unit may be set back to factory default settings. This may be of use if settings have been changed, and the unit is no longer functioning as intended.

- Run the maXTouch Studio application and select Configuration from the toolbar.
- Select Zero Config and then Load Config.
- From the Open dialog box, navigate to the *Default Configuration File* folder on the supplied USB memory stick and locate and load the *xcfg*. file
- Once the file is loaded, click on the Device menu on the maXTouch Studio.
- Select Backup then select Reset. The default factory settings are now set.



### Additional Information

More information about this product is available in the data sheet and user guide. More information about maXTouch Studio is available from your Microchip representative.

# Mouser Electronics

Authorized Distributor

Click to View Pricing, Inventory, Delivery & Lifecycle Information:

Microchip:

[ATEVKMXT336UA](#) [ATEVK-MXT336U-A](#)