



NPN/PNP Silicon Complementary Small Signal Dual Transistor Qualified per MIL-PRF-19500/421

Qualified Levels:
JAN, JANTX, and
JANTXV

DESCRIPTION

This 2N4854 device in a 6-pin TO-78 package is military qualified up to a JANTXV level for high-reliability applications. Microsemi also offers numerous other products to meet higher and lower power voltage regulation applications.

Important: For the latest information, visit our website <http://www.microsemi.com>.

FEATURES

- JEDEC registered 2N4854.
- JAN, JANTX, and JANTXV qualifications also available per MIL-PRF-19500/421.
- RoHS compliant versions available (commercial grade only).



TO-78 Package

Also available in:

 **6-Pin U package**
[2N4854U](#)

 **6-Pin Flatpack package**
[2N3838](#)

APPLICATIONS / BENEFITS

- Compact package design.
- Lightweight.

MAXIMUM RATINGS

Parameters/Test Conditions	Symbol	Value per		Unit
		Each Transistor	Total Package	
Thermal Resistance Junction-to-Case	$R_{\theta JC}$	175	87	$^{\circ}\text{C/W}$
Thermal Resistance Junction-to-Ambient	$R_{\theta JA}$	350	290	$^{\circ}\text{C/W}$
Total Power Dissipation @ $T_A = +25^{\circ}\text{C}$ ⁽¹⁾	P_T	0.30	0.60	W
Total Power Dissipation @ $T_C = +25^{\circ}\text{C}$ ⁽²⁾	P_T	1.0	2.0	W
Junction and Storage Temperature	T_J and T_{STG}	-65 to +200		$^{\circ}\text{C}$
Collector-Base Voltage, Emitter Open	V_{CBO}	60		V
Emitter-Base Voltage, Collector Open	V_{EBO}	5		V
Collector-Emitter Voltage, Base Open	V_{CEO}	40		V
Collector Current, dc	I_C	600		mA
Lead to Case Voltage		+/- 120		V
Solder Temperature @ 10 s	T_{SP}	260		$^{\circ}\text{C}$

Notes: 1. For $T_A > +25^{\circ}\text{C}$, derate linearly 1.71 mW/ $^{\circ}\text{C}$ one transistor, 3.43 mW/ $^{\circ}\text{C}$ both transistors.
2. For $T_C > +25^{\circ}\text{C}$, derate linearly 5.71 mW/ $^{\circ}\text{C}$ one transistor, 11.43 mW/ $^{\circ}\text{C}$ both transistors.

MSC – Lawrence

6 Lake Street,
Lawrence, MA 01841
Tel: 1-800-446-1158 or
(978) 620-2600
Fax: (978) 689-0803

MSC – Ireland

Gort Road Business Park,
Ennis, Co. Clare, Ireland
Tel: +353 (0) 65 6840044
Fax: +353 (0) 65 6822298

Website:

www.microsemi.com

MECHANICAL and PACKAGING

- CASE: Au over Ni plated kovar, pure nickel cap.
- TERMINALS: Au over Ni plated kovar.
- MARKING: Manufacturer's ID, part number, date code.
- POLARITY: See case outline.
- WEIGHT: 0.856 grams.
- See [Package Dimensions](#) on last page.

PART NOMENCLATURE

SYMBOLS & DEFINITIONS

Symbol	Definition
I_B	Base Current, dc.
I_C	Collector Current, dc.
I_E	Emitter Current, dc.
I_O	Average Rectified Output Current: The Output Current averaged over a full cycle with a 50 Hz or 60 Hz sine-wave input and a 180 degree conduction angle.
V_{CB}	Collector-Base Voltage (dc).
V_{CE}	Collector-Emitter Voltage, dc.
V_{EB}	Emitter-Base Voltage (dc).

ELECTRICAL CHARACTERISTICS @ $T_A = 25^\circ\text{C}$ unless otherwise noted.

Characteristics	Symbol	Min.	Max.	Unit
OFF CHARACTERISTICS				
Collector-Emitter Breakdown Current $I_C = 10\text{ mA (pulsed)}$	$V_{(BR)CEO}$	40		V
Collector-Base Cutoff Current $V_{CB} = 60\text{ V}$	$I_{CBO(1)}$		10	μA
Collector-Base Cutoff Current $V_{CB} = 50\text{ V}$	$I_{CBO(2)}$		10	nA
Emitter-Base Cutoff Current $V_{EB} = 5.0\text{ V}$ $V_{EB} = 3.0\text{ V}$	$I_{EBO(1)}$ $I_{EBO(2)}$		10 10	μA nA
ON CHARACTERISTICS				
Forward-Current Transfer Ratio $I_C = 150\text{ mA}, V_{CE} = 1\text{ V}$ $I_C = 100\text{ }\mu\text{A}, V_{CE} = 10\text{ V}$ $I_C = 1.0\text{ mA}, V_{CE} = 10\text{ V}$ $I_C = 10\text{ mA}, V_{CE} = 10\text{ V}$ $I_C = 150\text{ mA}, V_{CE} = 10\text{ V}$ $I_C = 300\text{ mA}, V_{CE} = 10\text{ V}$	h_{FE}	50 35 50 75 100 35	300	
Collector-Emitter Saturation Voltage $I_C = 150\text{ mA}, I_B = 15\text{ mA}$	$V_{CE(sat)}$		0.40	V
Base-Emitter Saturation Voltage $I_C = 150\text{ mA}, I_B = 15\text{ mA}$	$V_{BE(sat)}$	0.80	1.25	V
DYNAMIC CHARACTERISTICS				
Forward Current Transfer Ratio $I_C = 1.0\text{ mA}, V_{CE} = 10\text{ V}, f = 1.0\text{ kHz}$	h_{fe}	60	300	
Forward Current Transfer Ratio, Magnitude $I_C = 20\text{ mA}, V_{CE} = 10\text{ V}, f = 100\text{ MHz}$	$ h_{fe} $	2.0	10	
Small-Signal Common Emitter Input Impedance $I_C = 1.0\text{ mA}, V_{CE} = 10\text{ V}, f = 1.0\text{ kHz}$	h_{ie}	1.5	9.0	$\text{k}\Omega$
Small-Signal Common Emitter Output Admittance $I_C = 1.0\text{ mA}, V_{CE} = 10\text{ V}, f = 1.0\text{ kHz}$	h_{oe}		50	μmho
Open Circuit Output Capacitance $V_{CB} = 10\text{ V}, I_E = 0, 100\text{ kHz} \leq f \leq 1.0\text{ MHz}$	C_{obo}		8.0	pF
Noise Figure $I_C = 100\text{ }\mu\text{A}, V_{CE} = 10\text{ V}, f = 1.0\text{ kHz}, R_G = 1.0\text{ k}\Omega$	NF		8.0	dB
SWITCHING CHARACTERISTICS				
Turn-On Time (Saturated) (Reference MIL-PRF-19500/421, figure 7)	t_{on}		45	ns
Turn-Off Time (Saturated) (Reference MIL-PRF-19500/421, figure 8)	t_{off}		300	ns
Pulse Response (Non-Saturated) (Reference MIL-PRF-19500/421, figure 9)	$t_{on} + t_{off}$		18	ns
Collector-Emitter Non-Latching Voltage	V_{CEO}	40		V

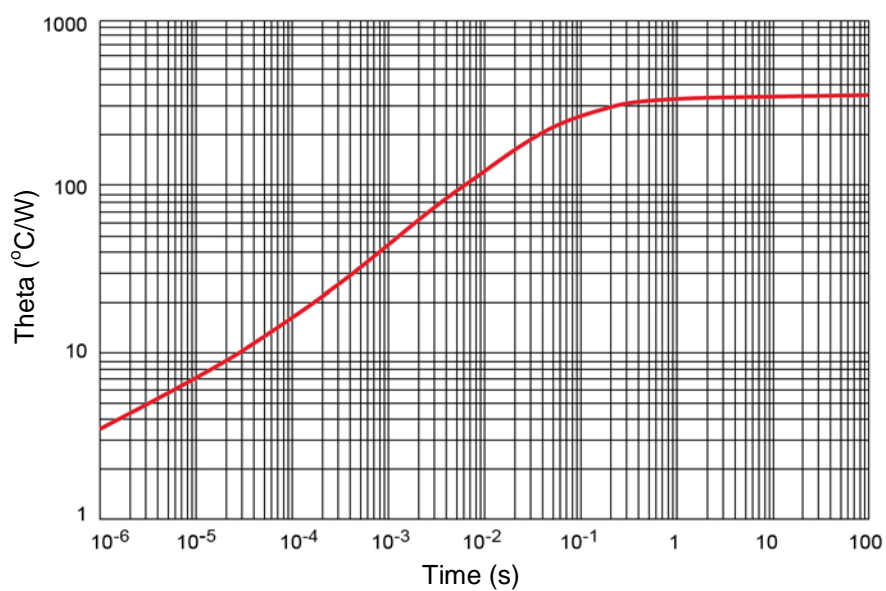
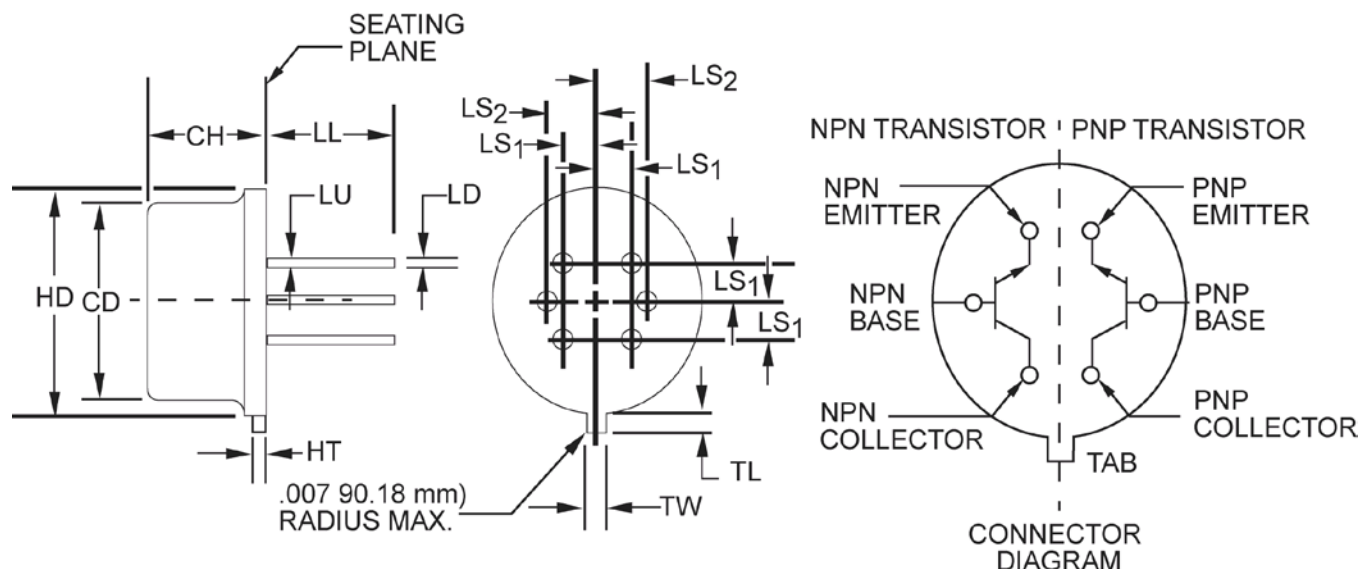
GRAPHS


FIGURE 3
Thermal impedance graph ($R_{\theta JA}$)

PACKAGE DIMENSIONS


Ltr	Dimensions				Notes
	Inch		Millimeters		
	Min	Max	Min	Max	
CD	.305	.335	7.75	8.51	
CH	.140	.260	3.56	6.60	
HD	.335	.370	8.51	9.40	
HT	.009	.125	0.23	3.18	
LD	.016	.021	0.41	0.53	3,7
LL	.500	1.750	12.70	44.45	7

Ltr	Dimensions				Notes
	Inch		Millimeters		
	Min	Max	Min	Max	
LS1	.0707 Nom.		1.796 Nom.		5
LS2	.1000 Nom.		2.540 Nom		5
LU	.016	.019	0.41	0.48	4, 7
TL	.029	.045	0.74	1.14	6
TW	.028	.034	0.71	0.86	

NOTES:

1. Dimensions are in inches.
2. Millimeters are given for general information only.
3. Measured in the zone beyond .250 inch (6.35 mm) from the seating plane.
4. Measured in the zone .050 inch (1.27 mm) and .250 inch (6.35 mm) from the seating plane.
5. When measured in a gauging plane .054 +.001, -.000 inch (1.37 +0.03, -0.00 mm) below the seating plane of the transistor, maximum diameter leads shall be within .007 inch (0.18 mm) of their true location relative to a maximum width tab. Smaller diameter leads shall fall within the outline of the maximum diameter lead tolerance.
6. Measured from the maximum diameter of the actual device.
7. All six leads.
8. In accordance with ASME Y14.5M, diameters are equivalent to Φ x symbology.

Mouser Electronics

Authorized Distributor

Click to View Pricing, Inventory, Delivery & Lifecycle Information:

[Microchip:](#)

[2n4854](#) [Jan2N4854](#) [Jan2N4854/TR](#) [Jantx2N4854](#) [Jantxv2N4854](#)