

Hysteretic Buck High-Brightness LED Driver with High-Side Current Sensing

Features

- Hysteretic Control with High-Side Current Sensing
- Integrated 40V1 Ω MOSFET
- >90% Efficiency
- 4.5V to 40V Wide Input Voltage Range
- $\pm 5\%$ LED Current Accuracy
- Up to 2 MHz Switching Frequency
- Adjustable Constant LED Current
- Analog or Pulse-Width Modulation (PWM) Control Signal for PWM Dimming
- Overtemperature Protection
- -40°C to $+125^{\circ}\text{C}$ Operating Ambient Temperature Range

Applications

- Low-Voltage Industrial and Architectural Lighting
- General Purpose Constant Current Source
- Signage and Decorative LED Lighting
- Indicator and Emergency Lighting

General Description

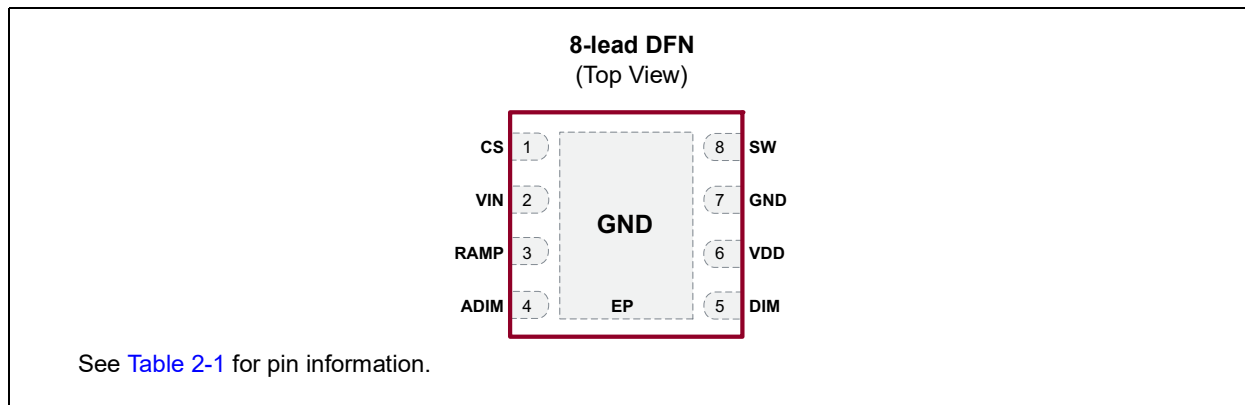
The HV9918 is a PWM controller IC designed to drive high-brightness LEDs using a buck topology. It operates from an input voltage of 4.5 VDC to 40 VDC and employs hysteretic control with a high-side current sense resistor to set the constant output current up to 700 mA. The device is well suited for applications requiring a wide input voltage range. The high-side current sensing and an integrated current-setting circuitry minimize the number of external components while delivering an accurate average output.

A dedicated PWM input enables pulsed LED dimming over a wide range of brightness levels. A hysteretic control method ensures excellent input supply rejection and fast response during load transients and PWM dimming.

The HV9918 offers an analog-controlled PWM dimming feature that reduces the output current by applying an external DC voltage below the internal 2V threshold voltage from ADIM to GND. ADIM can also accept input from a resistor divider including a negative temperature coefficient (NTC) thermistor connected between ADIM and GND or a positive temperature coefficient (PTC) thermistor connected between ADIM and V_{DD} . This provides a PWM thermal foldback feature that reduces the LED current when the temperature of the LED string exceeds a specified temperature point. Additional features include thermal-shutdown protection.

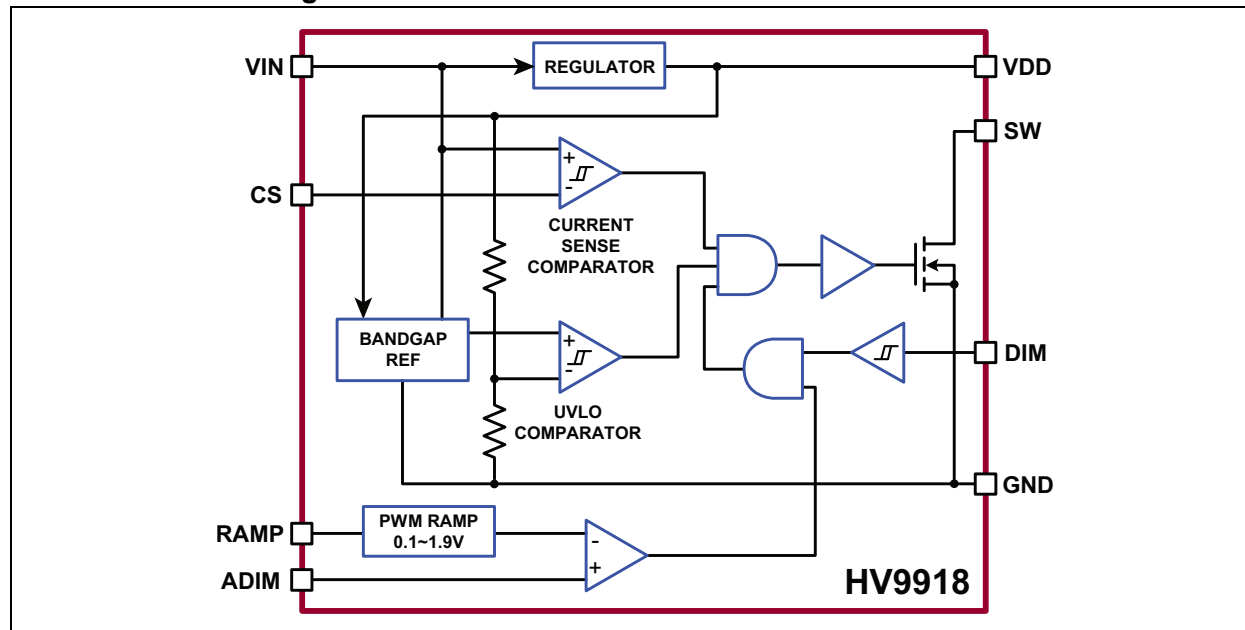
The high-switching frequency up to 2 MHz permits the use of small inductors and capacitors, minimizing space and cost in the overall system.

Package Type

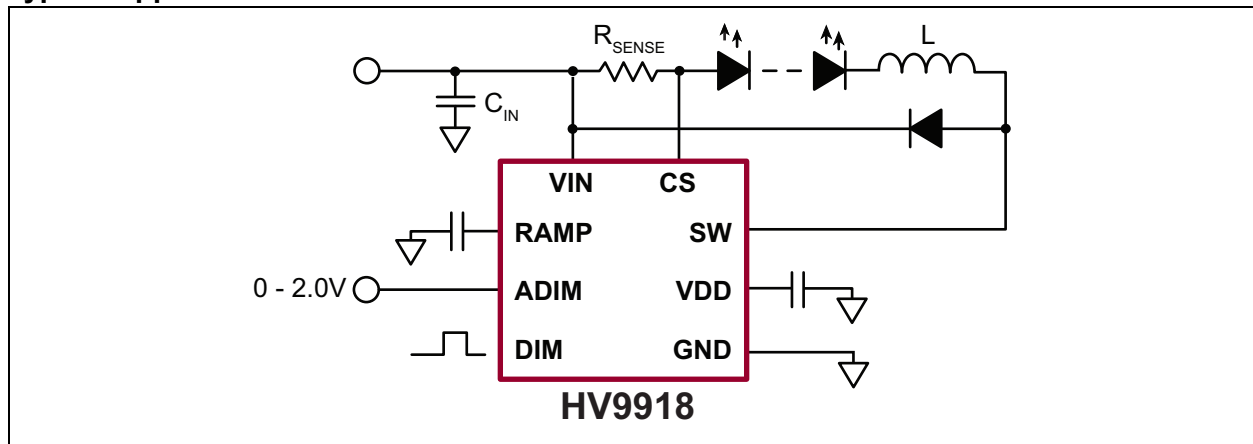


HV9918

Functional Block Diagram



Typical Application Circuit



1.0 ELECTRICAL CHARACTERISTICS

Absolute Maximum Ratings†

V_{IN} , CS and SW to GND.....	–0.3V to +45V
V_{DD} , GATE, RAMP, DIM, ADIM to GND.....	–0.3V to +6V
CS to V_{IN}	–1V to +0.3V
Junction Temperature, T_J	–40°C to +150°C
Storage Temperature Range, T_S	–65°C to +150°C
Continuous Power Dissipation ($T_A = +25^\circ\text{C}$):	
8-lead DFN.....	1.6W

† **Notice:** Stresses above those listed under “Absolute Maximum Ratings” may cause permanent damage to the device. This is a stress rating only, and functional operation of the device at those or any other conditions above those indicated in the operational sections of this specification is not intended. Exposure to maximum rating conditions for extended periods may affect device reliability.

ELECTRICAL CHARACTERISTICS

Electrical Specifications: $V_{IN} = 12\text{V}$, $V_{DIM} = V_{DD}$, $V_{RAMP} = \text{GND}$, $C_{VDD} = 1\text{ }\mu\text{F}$, $R_{SENSE} = 0.5\Omega$, $T_A = T_J = -40^\circ\text{C}$ to $+125^\circ\text{C}$ (**Note 1**) unless otherwise noted.

Parameter	Sym.	Min.	Typ.	Max.	Unit	Conditions
Input DC Supply Voltage Range	V_{IN}	4.5	—	40	V	DC input voltage
Internally Regulated Voltage	V_{DD}	4.5	—	5.5	V	$V_{IN} = 6\text{V}$ to 40V
Supply Current	I_{IN}	—	—	1.5	mA	SW = GND
Shutdown Supply Current	$I_{IN, SDN}$	—	—	900	μA	$V_{DIM} < 0.7\text{V}$
Internal Regulator Current Limit	$I_{IN, LIM}$	—	30	—	mA	$V_{IN} = 4.5\text{V}$, $V_{DD} = 0\text{V}$
		—	8	—		$V_{IN} = 4.5\text{V}$, $V_{DD} = 4\text{V}$
Switching Frequency	f_{SW}	—	—	2	MHz	
V_{DD} Undervoltage Lockout Threshold	UVLO	—	—	4.5	V	V_{DD} rising
V_{DD} Undervoltage Lockout Hysteresis	ΔUVLO	—	500	—	mV	V_{DD} falling
SENSE COMPARATOR						
Sense Voltage Threshold High	$V_{RS(HI)}$	213	—	246	mV	$(V_{IN} - V_{CS})$ rising
Sense Voltage Threshold Low	$V_{RS(LO)}$	158	—	182	mV	$(V_{IN} - V_{CS})$ falling
Propagation Delay to SW Off	t_{DPDL}	—	70	—	ns	Rising edge of $V_{IN} - V_{CS} = V_{RS(HI)} + 70\text{ mV}$ to $V_{SW} = 0.1 \times V_{IN}$
Propagation Delay to SW On	t_{DPDH}	—	70	—	ns	Falling edge of $V_{IN} - V_{CS} = V_{RS(LO)} - 70\text{ mV}$ to $V_{SW} = 0.9 \times V_{IN}$
Current Sense Input Current	I_{CS}	—	—	1	μA	$V_{IN} - V_{CS} = 200\text{ mV}$
Current Sense Voltage Threshold Hysteresis	$V_{RS(HYS)}$	—	56	70	mV	
DIM INPUT						
DIM Input High Voltage	$V_{DIM(H)}$	2.2	—	—	V	
DIM Input Low Voltage	$V_{DIM(L)}$	—	—	0.7	V	
Turn-On Time	t_{ON}	—	100	—	ns	V_{DIM} rising edge to $V_{SW} = 0.9 \times V_{IN}$
Turn-Off Time	t_{OFF}	—	100	—	ns	V_{DIM} falling edge to $V_{SW} = 0.1 \times V_{IN}$

Note 1: Limits obtained by design and characterization. Typical values are given at $T_A = 25^\circ\text{C}$.

2: For design guidance only

ELECTRICAL CHARACTERISTICS (CONTINUED)

Electrical Specifications: $V_{IN} = 12V$, $V_{DIM} = V_{DD}$, $V_{RAMP} = GND$, $C_{VDD} = 1 \mu F$, $R_{SENSE} = 0.5\Omega$, $T_A = T_J = -40^\circ C$ to $+125^\circ C$ ([Note 1](#)) unless otherwise noted.

Parameter	Sym.	Min.	Typ.	Max.	Unit	Conditions
OUTPUT SWITCH						
SW Continuous Current	$I_{SW(DC)}$	—	—	0.7	A	
SW On Resistance	$R_{SW(ON)}$	—	1	2	Ω	
SW Leakage Current	$I_{SW(LK)}$	—	10	—	μA	$V_{IN} = 40V$
OVERTEMPERATURE PROTECTION						
Overtemperature Trip Limit	T_{OT}	128	140	—	$^\circ C$	Note 2
Overtemperature Hysteresis	ΔT_{HYST}	—	60	—	$^\circ C$	Note 2
ANALOG CONTROL OF PWM DIMMING						
Dimming Frequency	f_{RAMP}	130	—	300	Hz	$C_{RAMP} = 47 \text{ nF}$
		550	—	1250		$C_{RAMP} = 10 \text{ nF}$
RAMP Threshold, Low	$V_{TH(L)}$	—	0.1	—	V	
RAMP Threshold, High	$V_{TH(H)}$	1.8	—	2.1	V	
ADIM Offset Voltage	V_{OS}	−35	—	+35	mV	

Note 1: Limits obtained by design and characterization. Typical values are given at $T_A = 25^\circ C$.

2: For design guidance only

TEMPERATURE SPECIFICATIONS

Parameter	Sym.	Min.	Typ.	Max.	Unit	Conditions
TEMPERATURE RANGE						
Operating Ambient Temperature	T_A	−40	—	+125	$^\circ C$	Note 2
Maximum Junction Temperature	$T_{J(ABSMAX)}$	—	—	+150	$^\circ C$	
Storage Temperature	T_S	−65	—	+150	$^\circ C$	
PACKAGE THERMAL RESISTANCE						
8-lead 3x3 DFN	θ_{JA}	—	+60	—	$^\circ C/W$	Note 1

Note 1: Mounted on an FR-4 board, 25 mm x 25 mm x 1.57 mm

2: The maximum allowable power dissipation is a function of ambient temperature, the maximum allowable junction temperature, and the thermal resistance from junction to air (i.e., T_A , T_J , θ_{JA}). Exceeding the maximum allowable power dissipation will cause the device operating junction temperature to exceed the maximum +125 $^\circ C$ rating. Sustained junction temperatures above +125 $^\circ C$ can impact device reliability.

2.0 PIN DESCRIPTION

The details on the pins of HV9918 8-lead DFN are listed on [Table 2-1](#). Refer to [Package Type](#) for the location of pins.

TABLE 2-1: PIN FUNCTION TABLE

Pin Number	Pin Name	Description
1	CS	Current sense input. Senses LED string current.
2	VIN	Input voltage 4.5V to 40V DC
3	RAMP	Analog PWM dimming ramp output
4	ADIM	Analog 0V–2V signal input for analog control of PWM dimming
5	DIM	PWM signal input
6	VDD	Internally regulated supply voltage. Connect a capacitor from VDD to ground.
7	GND	Device ground
8	SW	Open Drain Output of an internal 40V 1Ω MOSFET
EP	GND	Exposed backside Pad. Must be wired to pin 7 and GND plane on PCB to maximize the thermal performance of the package

3.0 APPLICATION INFORMATION

3.1 General Description

The HV9918 is a step-down, constant-current, high-brightness LED (HB LED) driver. The device operates from a 4.5V to 40V input voltage range and includes an internal 40V 1Ω N-channel MOSFET. A high-side current sense resistor sets the output current, and a dedicated PWM dimming input (DIM) allows for a wide range of dimming duty ratios. PWM dimming can also be achieved by applying a DC voltage between 0V and 2V to the analog dimming input (ADIM). In this case, the dimming frequency can be programmed using a single capacitor at the RAMP pin. The high-side current setting and sensing scheme minimizes the number of external components while delivering LED current with ±5% accuracy using a 1% sense resistor.

3.2 Undervoltage Lockout (UVLO)

The HV9918 includes a 3.7V UVLO with 500 mV hysteresis. When V_{IN} falls below 3.7V, switching of SW is disabled. Switching of SW resumes once V_{IN} is 4.5V or higher.

3.3 5V Regulator

V_{DD} is the output of a 5V internal regulator capable of sourcing 8 mA. Bypass V_{DD} to GND with a 1 μF capacitor.

3.4 DIM Input

The HV9918 allows dimming with a PWM signal at the DIM input. A logic level below 0.7V at DIM halts SW switching, turning the LED current off. To turn the LED current back on, the logic level at DIM must be at least 2.2V.

3.5 ADIM and RAMP Inputs

The PWM dimming scheme can also be implemented by applying an analog control signal to the ADIM pin. If an analog control signal of 0V–2V is applied to ADIM, the device compares this analog input to a voltage ramp to pulse-width modulate the LED current. Connecting an external capacitor across RAMP and GND programs the PWM dimming ramp frequency. See Equation 3-1.

EQUATION 3-1:

$$f_{PWM} = \frac{1}{C_{RAMP} \times 120k\Omega}$$

The DIM and ADIM inputs can be used simultaneously. In such case, a $f_{PWM(MAX)}$ lower than the frequency of the dimming signal at DIM must be selected. The smaller dimming duty cycle of ADIM and DIM will determine the SW signal.

When the analog control of the PWM dimming feature is not used, RAMP must be wired to GND and ADIM should be connected to V_{DD} .

One possible application of the ADIM feature may include protection of the LED load from overtemperature by connecting an NTC thermistor to ADIM as shown in Figure 3-1.

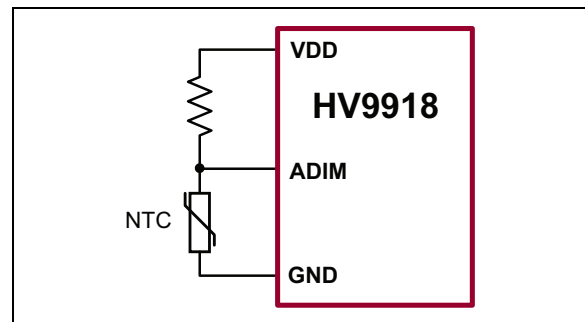


FIGURE 3-1: Overtemperature Protection using ADIM Pin.

3.6 Setting LED Current with the External Resistor (R_{SENSE})

The output current in the LED is determined by the external current sense resistor (R_{SENSE}) connected between V_{IN} and CS. Disregarding the effect of the propagation delays, the sense resistor can be calculated as seen in Equation 3-2.

EQUATION 3-2:

$$R_{SENSE} \approx \left(\frac{1}{2}\right) \times \left(\frac{V_{RS(HI)} + V_{RS(LO)}}{I_{LED}}\right) = \frac{200mV}{I_{LED}}$$

3.7 Selecting Buck Inductor (L)

The HV9918 regulates the LED output current using an input comparator with hysteresis. (See Figure 3-2.) As the current through the inductor ramps up and the voltage across the sense resistor reaches the upper threshold, the internal MOSFET at SW turns off. Then the inductor current ramps down through the freewheeling diode until the voltage across the sense resistor equals the lower threshold and the MOSFET turns on again.

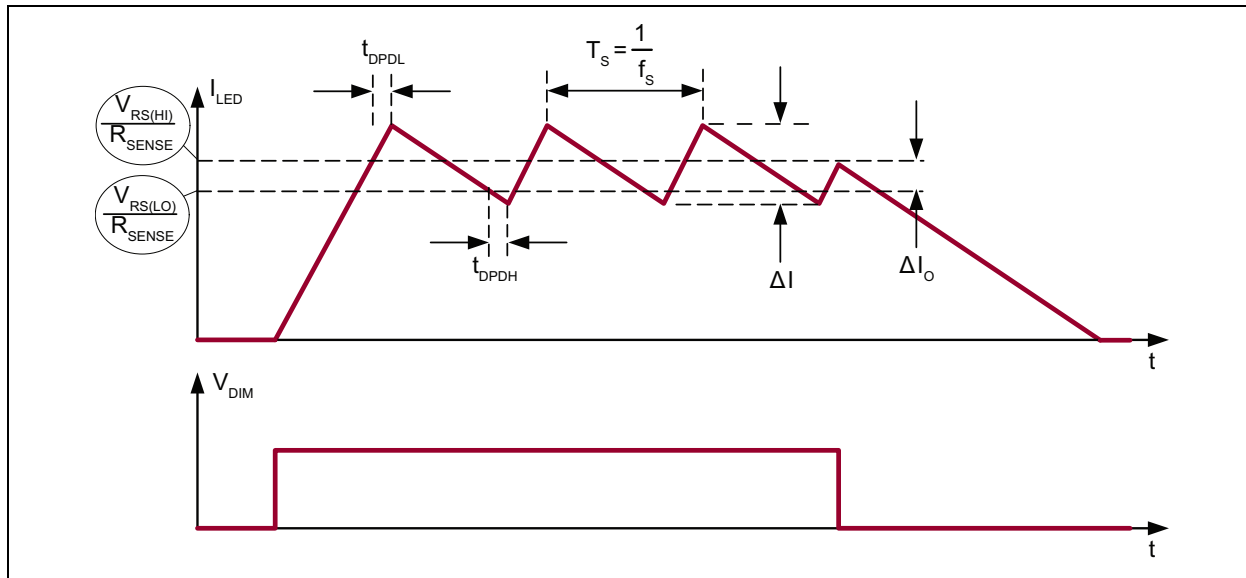


FIGURE 3-2: Inductor Current Waveform.

Equation 3-3 shows how to determine the inductor value for a desired operating frequency (f_s).

EQUATION 3-3:

$$L = \frac{(V_{IN} - V_{OUT}) \times V_{OUT}}{f_s V_{IN} \Delta I_O} - \frac{(V_{IN} - V_{OUT}) \times t_{DPDL}}{\Delta I_O} - \frac{V_{OUT} t_{DPDH}}{\Delta I_O}$$

Where:

$$\Delta I_O = \frac{V_{RS(HI)} - V_{RS(LO)}}{R_{SENSE}}$$

and t_{DPDL} and t_{DPDH} are the propagation delays.

Note that the current ripple (ΔI_L) in the inductor (L) is greater than ΔI_O .

The current ripple in the inductor (L) can be calculated with Equation 3-4.

EQUATION 3-4:

$$\Delta I_L = \Delta I_O + \frac{(V_{IN} - V_{OUT}) \times t_{DPDL}}{L} + \frac{V_{OUT} t_{DPDH}}{L}$$

For proper inductor selection, note that the maximum switching frequency occurs at the highest V_{IN} and $V_{OUT} = V_{IN} / 2$.

3.8 Thermal Shutdown

The HV9918's thermal shutdown feature turns off the SW driver when the junction temperature exceeds +140°C. The SW driver turns back on when the junction temperature drops +60°C below the shutdown temperature threshold.

3.9 Freewheeling Diode Selection

The forward voltage of the freewheeling diode should be as low as possible for better efficiency. A Schottky diode is a good choice as long as the breakdown voltage is high enough to withstand the maximum operating voltage. The forward current rating of the diode must be at least equal to the maximum LED current.

3.10 LED Current Ripple

The LED current ripple is equal to the inductor current ripple. In cases when a lower LED current ripple is needed, a capacitor can be placed across the LED terminals.

3.11 PCB Layout Guidelines

Careful PCB layout is critical to achieving low switching losses and stable operation. Use a multilayer board whenever possible for better noise immunity. Minimize

ground noise by connecting high-current ground returns, the input bypass capacitor ground lead and the output filter ground lead to a single point (star ground configuration). The fast di/dt loop is formed by the input capacitor C_{IN} , the freewheeling diode and the HV9918 switching MOSFET. To minimize noise interaction, this loop area should be as small as possible. Place R_{SENSE} extremely close to the input filter and V_{IN} . For better noise immunity, a Kelvin connection is strongly recommended between CS and R_{SENSE} . Connect the exposed pad of the IC to a large area ground plane for improved power dissipation.

4.0 PACKAGING INFORMATION

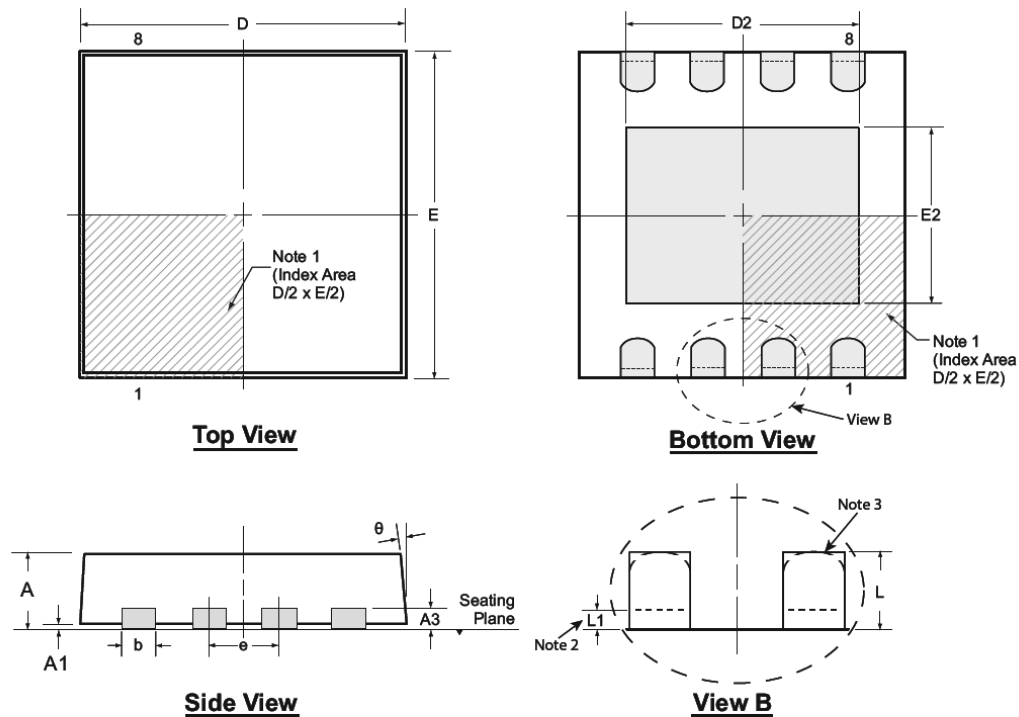
4.1 Package Marking Information

8-lead DFN	Example
<div><div>XXXX</div><div>YYWW</div><div>•NNN</div></div>	<div><div>9918</div><div>1913</div><div>•888</div></div>

Legend:	XX...X	Product Code or Customer-specific information
	Y	Year code (last digit of calendar year)
	YY	Year code (last 2 digits of calendar year)
	WW	Week code (week of January 1 is week '01')
	NNN	Alphanumeric traceability code
	(e3)	Pb-free JEDEC® designator for Matte Tin (Sn)
	*	This package is Pb-free. The Pb-free JEDEC designator (e3) can be found on the outer packaging for this package.

Note: In the event the full Microchip part number cannot be marked on one line, it will be carried over to the next line, thus limiting the number of available characters for product code or customer-specific information. Package may or not include the corporate logo.

8-Lead DFN Package Outline (K7) 3.00x3.00mm body, 0.80mm height (max), 0.65mm pitch



Note: For the most current package drawings, see the Microchip Packaging Specification at www.microchip.com/packaging.

Notes:

1. A Pin 1 identifier must be located in the index area indicated. The Pin 1 identifier can be: a molded mark/identifier; an embedded metal marker; or a printed indicator.
2. Depending on the method of manufacturing, a maximum of 0.15mm pullback (L1) may be present.
3. The inner tip of the lead may be either rounded or square.

Symbol		A	A1	A3	b	D	D2	E	E2	e	L	L1	θ
Dimension (mm)	MIN	0.70	0.00	0.20 REF	0.25	2.85*	1.60	2.85*	1.35	0.65 BSC	0.30	0.00*	0°
	NOM	0.75	0.02		0.30	3.00	-	3.00	-		0.40	-	-
	MAX	0.80	0.05		0.35	3.15*	2.50	3.15*	1.75		0.50	0.15	14°

JEDEC Registration MO-229, Variation WEEC-2, Issue C, Aug. 2003.

* This dimension is not specified in the JEDEC drawing.

Drawings not to scale.

NOTES:

APPENDIX A: REVISION HISTORY

Revision A (September 2019)

- Converted Supertex Doc# DSFP-HV9918 to Microchip DS20005722A
- Changed the package marking format
- Changed the packaging quantity of 8-lead DFN from 3000/Reel to 3300/Reel
- Made minor text changes throughout the document

PRODUCT IDENTIFICATION SYSTEM

To order or obtain information, e.g., on pricing or delivery, contact your local Microchip representative or sales office.

<u>PART NO.</u>	<u>XX</u>	-	<u>X</u>	-	<u>X</u>
Device	Package Options		Environmental		Media Type
<div><div>Device:HV9918 = Hysteretic Buck High-Brightness LED Driver with High-Side Current Sensing</div><div>Package:K7 = 8-lead WDFN</div><div>Environmental:G = Lead (Pb)-free/RoHS-compliant Package</div><div>Media Type:(blank) = 3300/Reel for a K7 Package</div></div>					
<div><div>Example:</div><div>a) HV9918K7-G: Hysteretic Buck High-Brightness LED Driver with High-Side Current Sensing, 8-lead WDFN Package, 3300/Reel</div></div>					

Note the following details of the code protection feature on Microchip devices:

- Microchip products meet the specification contained in their particular Microchip Data Sheet.
- Microchip believes that its family of products is one of the most secure families of its kind on the market today, when used in the intended manner and under normal conditions.
- There are dishonest and possibly illegal methods used to breach the code protection feature. All of these methods, to our knowledge, require using the Microchip products in a manner outside the operating specifications contained in Microchip's Data Sheets. Most likely, the person doing so is engaged in theft of intellectual property.
- Microchip is willing to work with the customer who is concerned about the integrity of their code.
- Neither Microchip nor any other semiconductor manufacturer can guarantee the security of their code. Code protection does not mean that we are guaranteeing the product as "unbreakable."

Code protection is constantly evolving. We at Microchip are committed to continuously improving the code protection features of our products. Attempts to break Microchip's code protection feature may be a violation of the Digital Millennium Copyright Act. If such acts allow unauthorized access to your software or other copyrighted work, you may have a right to sue for relief under that Act.

Information contained in this publication regarding device applications and the like is provided only for your convenience and may be superseded by updates. It is your responsibility to ensure that your application meets with your specifications. MICROCHIP MAKES NO REPRESENTATIONS OR WARRANTIES OF ANY KIND WHETHER EXPRESS OR IMPLIED, WRITTEN OR ORAL, STATUTORY OR OTHERWISE, RELATED TO THE INFORMATION, INCLUDING BUT NOT LIMITED TO ITS CONDITION, QUALITY, PERFORMANCE, MERCHANTABILITY OR FITNESS FOR PURPOSE. Microchip disclaims all liability arising from this information and its use. Use of Microchip devices in life support and/or safety applications is entirely at the buyer's risk, and the buyer agrees to defend, indemnify and hold harmless Microchip from any and all damages, claims, suits, or expenses resulting from such use. No licenses are conveyed, implicitly or otherwise, under any Microchip intellectual property rights unless otherwise stated.

Trademarks

The Microchip name and logo, the Microchip logo, Adaptec, AnyRate, AVR, AVR logo, AVR Freaks, BesTime, BitCloud, chipKIT, chipKIT logo, CryptoMemory, CryptoRF, dsPIC, FlashFlex, flexPWR, HELDO, IGLOO, JukeBlox, KeeLoq, Klear, LANCheck, LinkMD, maXStylus, maXTouch, MediaLB, megaAVR, Microsemi, Microsemi logo, MOST, MOST logo, MPLAB, OptoLyzer, PackTime, PIC, picoPower, PICSTART, PIC32 logo, PolarFire, Prochip Designer, QTouch, SAM-BA, SenGenuity, SpyNIC, SST, SST Logo, SuperFlash, Symmetricom, SyncServer, Tachyon, TempTrackr, TimeSource, tinyAVR, UNI/O, Vectron, and XMEGA are registered trademarks of Microchip Technology Incorporated in the U.S.A. and other countries.

APT, ClockWorks, The Embedded Control Solutions Company, EtherSynch, FlashTec, Hyper Speed Control, HyperLight Load, IntelliMOS, Libero, motorBench, mTouch, Powermite 3, Precision Edge, ProASIC, ProASIC Plus, ProASIC Plus logo, Quiet-Wire, SmartFusion, SyncWorld, Temux, TimeCesium, TimeHub, TimePictra, TimeProvider, Vite, WinPath, and ZL are registered trademarks of Microchip Technology Incorporated in the U.S.A.

Adjacent Key Suppression, AKS, Analog-for-the-Digital Age, Any Capacitor, AnyIn, AnyOut, BlueSky, BodyCom, CodeGuard, CryptoAuthentication, CryptoAutomotive, CryptoCompanion, CryptoController, dsPICDEM, dsPICDEM.net, Dynamic Average Matching, DAM, ECAN, EtherGREEN, In-Circuit Serial Programming, ICSP, INICnet, Inter-Chip Connectivity, JitterBlocker, KlearNet, KlearNet logo, memBrain, Mindi, MiWi, MPASM, MPF, MPLAB Certified logo, MPLIB, MPLINK, MultiTRAK, NetDetach, Omniscient Code Generation, PICDEM, PICDEM.net, PICKit, PICtail, PowerSmart, PureSilicon, QMatrix, REAL ICE, Ripple Blocker, SAM-ICE, Serial Quad I/O, SMART-I.S., SSI, SuperSwitcher, SuperSwitcher II, Total Endurance, TSHARC, USBCheck, VariSense, ViewSpan, WiperLock, Wireless DNA, and ZENA are trademarks of Microchip Technology Incorporated in the U.S.A. and other countries.

SQTP is a service mark of Microchip Technology Incorporated in the U.S.A.

The Adaptec logo, Frequency on Demand, Silicon Storage Technology, and Symmcom are registered trademarks of Microchip Technology Inc. in other countries.

GestIC is a registered trademark of Microchip Technology Germany II GmbH & Co. KG, a subsidiary of Microchip Technology Inc., in other countries.

All other trademarks mentioned herein are property of their respective companies.

© 2019, Microchip Technology Incorporated, All Rights Reserved.

ISBN: 978-1-5224-5012-2

For information regarding Microchip's Quality Management Systems, please visit www.microchip.com/quality.

Worldwide Sales and Service

AMERICAS

Corporate Office
2355 West Chandler Blvd.
Chandler, AZ 85224-6199
Tel: 480-792-7200
Fax: 480-792-7277
Technical Support:
<http://www.microchip.com/support>
Web Address:
www.microchip.com

Atlanta
Duluth, GA
Tel: 678-957-9614
Fax: 678-957-1455

Austin, TX
Tel: 512-257-3370

Boston
Westborough, MA
Tel: 774-760-0087
Fax: 774-760-0088

Chicago
Itasca, IL
Tel: 630-285-0071
Fax: 630-285-0075

Dallas
Addison, TX
Tel: 972-818-7423
Fax: 972-818-2924

Detroit
Novi, MI
Tel: 248-848-4000

Houston, TX
Tel: 281-894-5983

Indianapolis
Noblesville, IN
Tel: 317-773-8323
Fax: 317-773-5453
Tel: 317-536-2380

Los Angeles
Mission Viejo, CA
Tel: 949-462-9523
Fax: 949-462-9608
Tel: 951-273-7800

Raleigh, NC
Tel: 919-844-7510

New York, NY
Tel: 631-435-6000

San Jose, CA
Tel: 408-735-9110
Tel: 408-436-4270

Canada - Toronto
Tel: 905-695-1980
Fax: 905-695-2078

ASIA/PACIFIC

Australia - Sydney
Tel: 61-2-9868-6733

China - Beijing
Tel: 86-10-8569-7000

China - Chengdu
Tel: 86-28-8665-5511

China - Chongqing
Tel: 86-23-8980-9588

China - Dongguan
Tel: 86-769-8702-9880

China - Guangzhou
Tel: 86-20-8755-8029

China - Hangzhou
Tel: 86-571-8792-8115

China - Hong Kong SAR
Tel: 852-2943-5100

China - Nanjing
Tel: 86-25-8473-2460

China - Qingdao
Tel: 86-532-8502-7355

China - Shanghai
Tel: 86-21-3326-8000

China - Shenyang
Tel: 86-24-2334-2829

China - Shenzhen
Tel: 86-755-8864-2200

China - Suzhou
Tel: 86-186-6233-1526

China - Wuhan
Tel: 86-27-5980-5300

China - Xian
Tel: 86-29-8833-7252

China - Xiamen
Tel: 86-592-2388138

China - Zhuhai
Tel: 86-756-3210040

ASIA/PACIFIC

India - Bangalore
Tel: 91-80-3090-4444

India - New Delhi
Tel: 91-11-4160-8631

India - Pune
Tel: 91-20-4121-0141

Japan - Osaka
Tel: 81-6-6152-7160

Japan - Tokyo
Tel: 81-3-6880-3770

Korea - Daegu
Tel: 82-53-744-4301

Korea - Seoul
Tel: 82-2-554-7200

Malaysia - Kuala Lumpur
Tel: 60-3-7651-7906

Malaysia - Penang
Tel: 60-4-227-8870

Philippines - Manila
Tel: 63-2-634-9065

Singapore
Tel: 65-6334-8870

Taiwan - Hsin Chu
Tel: 886-3-577-8366

Taiwan - Kaohsiung
Tel: 886-7-213-7830

Taiwan - Taipei
Tel: 886-2-2508-8600

Thailand - Bangkok
Tel: 66-2-694-1351

Vietnam - Ho Chi Minh
Tel: 84-28-5448-2100

EUROPE

Austria - Wels
Tel: 43-7242-2244-39
Fax: 43-7242-2244-393

Denmark - Copenhagen
Tel: 45-4450-2828
Fax: 45-4485-2829

Finland - Espoo
Tel: 358-9-4520-820

France - Paris
Tel: 33-1-69-53-63-20
Fax: 33-1-69-30-90-79

Germany - Garching
Tel: 49-8931-9700

Germany - Haan
Tel: 49-2129-3766400

Germany - Heilbronn
Tel: 49-7131-72400

Germany - Karlsruhe
Tel: 49-721-625370

Germany - Munich
Tel: 49-89-627-144-0
Fax: 49-89-627-144-44

Germany - Rosenheim
Tel: 49-8031-354-560

Israel - Ra'anana
Tel: 972-9-744-7705

Italy - Milan
Tel: 39-0331-742611
Fax: 39-0331-466781

Italy - Padova
Tel: 39-049-7625286

Netherlands - Drunen
Tel: 31-416-690399
Fax: 31-416-690340

Norway - Trondheim
Tel: 47-7288-4388

Poland - Warsaw
Tel: 48-22-3325737

Romania - Bucharest
Tel: 40-21-407-87-50

Spain - Madrid
Tel: 34-91-708-08-90
Fax: 34-91-708-08-91

Sweden - Gothenberg
Tel: 46-31-704-60-40

Sweden - Stockholm
Tel: 46-8-5090-4654

UK - Wokingham
Tel: 44-118-921-5800
Fax: 44-118-921-5820

Mouser Electronics

Authorized Distributor

Click to View Pricing, Inventory, Delivery & Lifecycle Information:

[Microchip:](#)

[HV9918K7-G](#)