
EV14Y36A Evaluation Board User Guide

Introduction

The EV14Y36A evaluation board is developed based on Microchip's PD69210 and PD69208 (PD69208M/PD69208T4/PD69204T4) Power over Ethernet (PoE) chipset for use with Microchip's VSC56xx Ethernet switch development boards. The board operates on 24 4-pair PoE ports (two pairsets) based on the IEEE® 802.3bt specification.

Microchip's PD69208M/PD69208T4/PD69204T4 PoE manager IC integrates power, analog, and state-of-the-art logic into a single 56-pin, plastic QFN package. The device is used in Ethernet switches and midspans/injectors to allow network devices to share power and data over the same Ethernet cable.

The PD69208M/PD69208T4 device is an eight-port, and the PD69204T4 device is a four-port, mixed-signal and high-voltage PoE driver. With the PD69210 external MCU, it performs as a Power Sourcing Equipment (PSE) system. Microchip's PD69210 PoE controller is a cost-effective and pre-programmed MCU designed to implement the Enhanced Mode PoE system.

The PD69208M/PD69208T4/PD69204T4 and PD69210 chipset supports PoE Powered Device (PD) detection, power-up, and protection according to IEEE 802.3af/at/bt standards and a legacy/pre-standard PD detection. It provides real-time PD protection through the following mechanisms: overload, under-load, over-voltage, over-temperature, and short circuit, and enables operation in a Standalone mode. It also executes all real-time functions as specified in IEEE 802.3at and IEEE 802.3bt standards, including PD detection (AF and AT).

The PD69208M/PD69208T4/PD69204T4 device supports supply voltages between 32 V and 57 V without additional power sources. A system that powers over four pairs is implemented by combining two ports of PD69208M/T4 and PD69204T4, enabling an extra feature for simple and low-cost, high-power PD devices. Ongoing monitoring of system parameters for the host software is available through communication. For higher reliability, internal thermal protection is implemented in the chip. The PD69208M/PD69208T4/PD69204T4 is the most integrated PSE IC including internal MOSFET and sense resistor to achieve a low-power dissipation.

The PD69210 features an eSPI bus for each PD69208M/PD69208T4/PD69204T4. It is based on the Microchip D21 family. The PD69210 utilizes an I²C or UART interface to the host CPU. It is designed to support the software that is field-upgradable through the communication interface. The evaluation system provides designers with the required environment to evaluate the performance.

The evaluation system has the following features.

- Interface to SparX VSC56xx switch development board
- Two connector gangs (each contains 12 4-pair ports)
- Switch domain isolated from PoE domain
- PoE controller manual Reset and serial communication settings
- LED status indication for all ports (LED—stream)
- Single power source
- 0 °C to 40 °C operating temperature
- RoHS compliant

Figure 1. EV14Y36A Evaluation Board and Dimensions

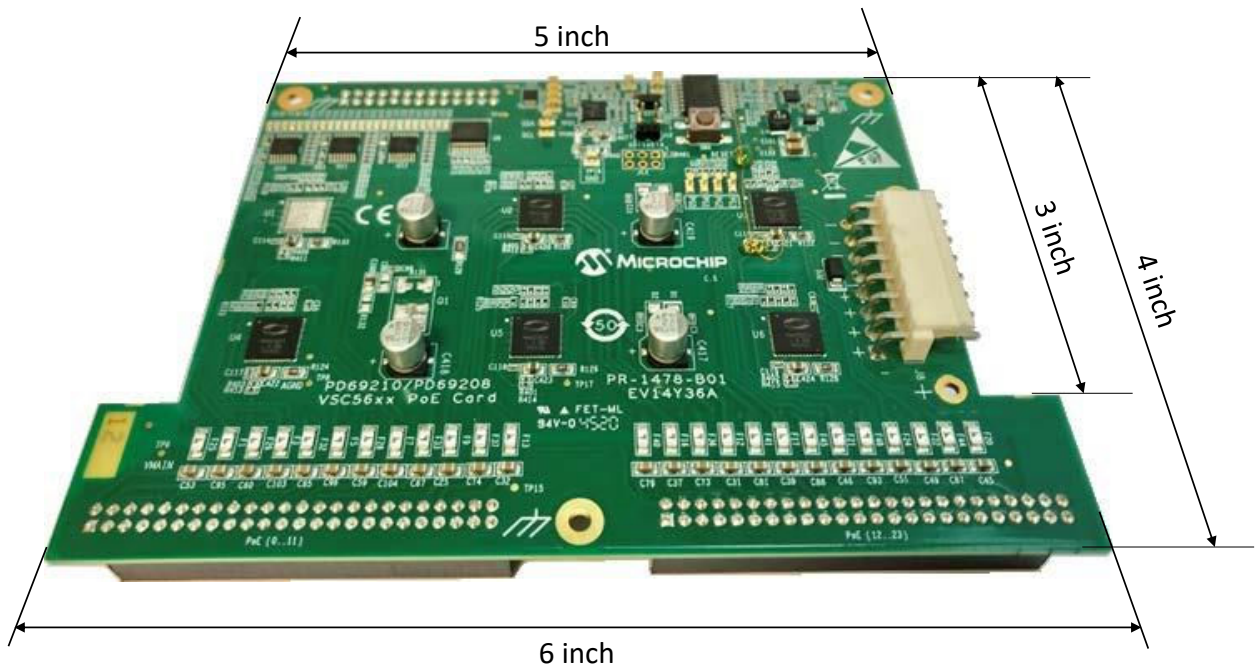


Figure 2. EV14Y36A Evaluation System Block Diagram

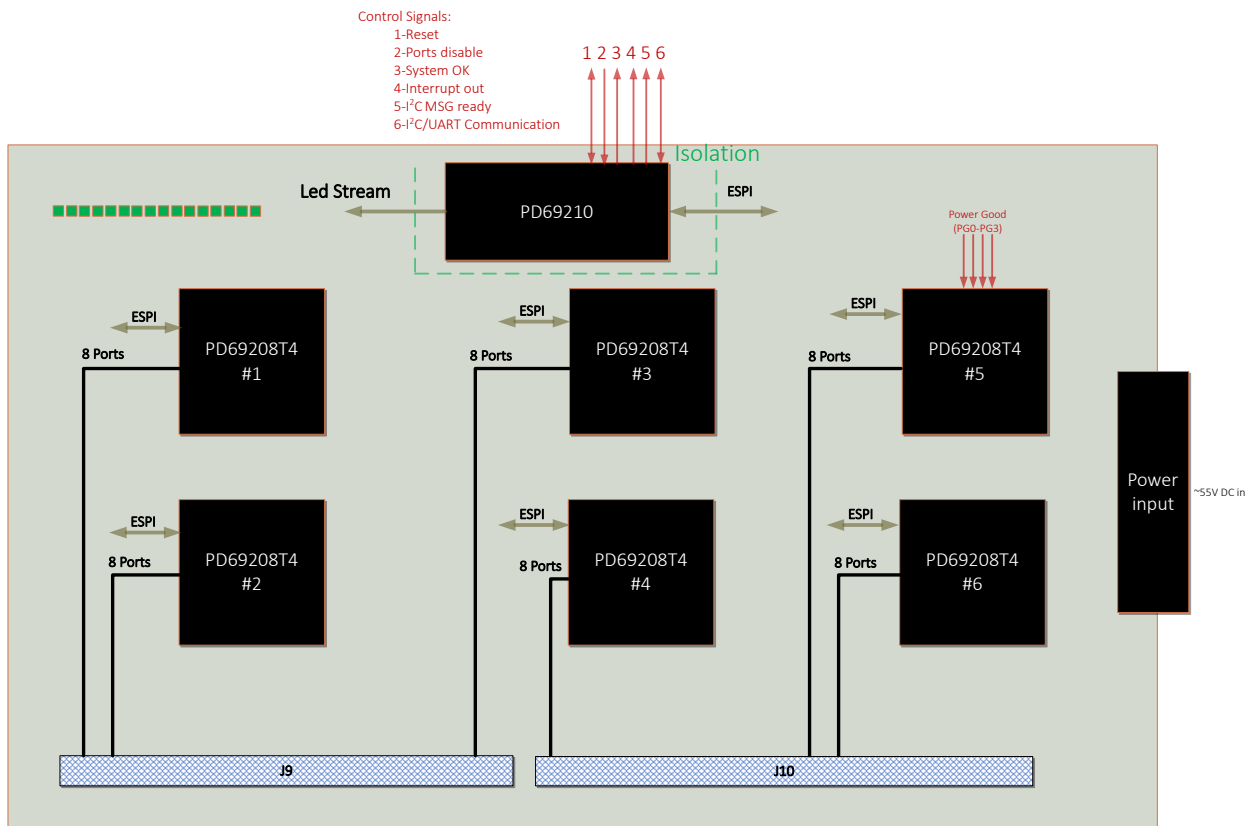


Table of Contents

Introduction.....	1
1. Overview.....	4
1.1. Power.....	4
1.2. Interface and Control.....	5
1.3. LED Indication.....	8
2. Installation and Settings.....	9
2.1. Ports Matrix.....	9
2.2. Fuses.....	10
2.3. Connectors J7, J9, and J10.....	11
2.4. Schematics.....	11
3. Revision History.....	12
The Microchip Website.....	13
Product Change Notification Service.....	13
Customer Support.....	13
Microchip Devices Code Protection Feature.....	13
Legal Notice.....	14
Trademarks.....	14
Quality Management System.....	15
Worldwide Sales and Service.....	16

1. Overview

This section provides the basic overview of the EV14Y36A evaluation board.

1.1 Power

The Evaluation Board (EVB) is powered by a single source via the DC connector J8. The input voltage level can be selected according to the IEEE 802.3 PoE standards.

- IEEE 802.3af: 44 V_{DC} to 57 V_{DC}
- IEEE 802.3at: 50 V_{DC} to 57 V_{DC}
- IEEE 802.3bt: 50 V_{DC} to 57 V_{DC} for type 3 and 52 V_{DC} to 57 V_{DC} for type 4.

The recommended voltage level is 55 V_{DC} that covers all PoE standards.

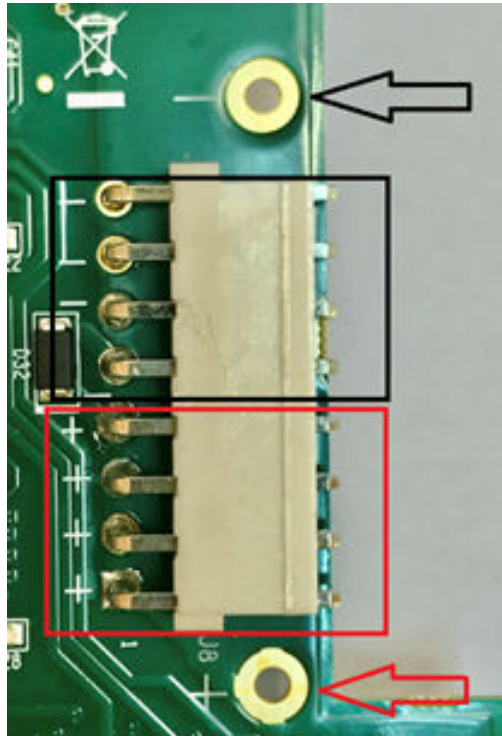
The EVB has two power domains:

- PoE domain, which is fed directly by the main supply, and it is the power domain provided by the J9 and J10 connectors.
- Isolated 3.3 V_{DC}, which feeds PD69210, LED-stream, and serial communication peripherals. The isolated 3.3 V_{DC} is generated by motherboard, provided by the J7 connector (a DC/DC module).

Note: The EVB DC is polarity sensitive. The correct polarity is shown in the following figure.

Important: The DC connector J8 is limited to current level up to 24 A (4 x 6 A per pin). If higher current is needed, the two via holes next to J8 can be used by soldering a cable to it. The two via holes support up to 40 A to feed the whole EVB.

Figure 1-1. Power via Holes



1.2 Interface and Control

This section describes the set-up procedures for serial communication, reset push-button, PoE ports disable, and power good input (PGD0–PGD3).

1.2.1 Serial Communication Settings

The EVB supports serial communication with the PD69210 by UART and I²C, to allow a user-friendly experience using Microchip's dedicated GUI.

Two different I²C address can be set by the host:

- When the host sets the address pin to 3.3 V ('1'), the PD69210 I²C address is set to 0x3C.
- When the host sets the address pin to 0 V ('0'), the PD69210 I²C address is set to 0x1C.

To change I²C address, R439 should be installed according to the following table (while R441 is not installed). The EVB is set to I²C address 0x3C (R439=7.5K, R441=20K).

When R439 and R441 are not installed, the PD69210 is set to UART.

The following figure shows I²C address settings.

Figure 1-2. I²C Address Settings Diagram

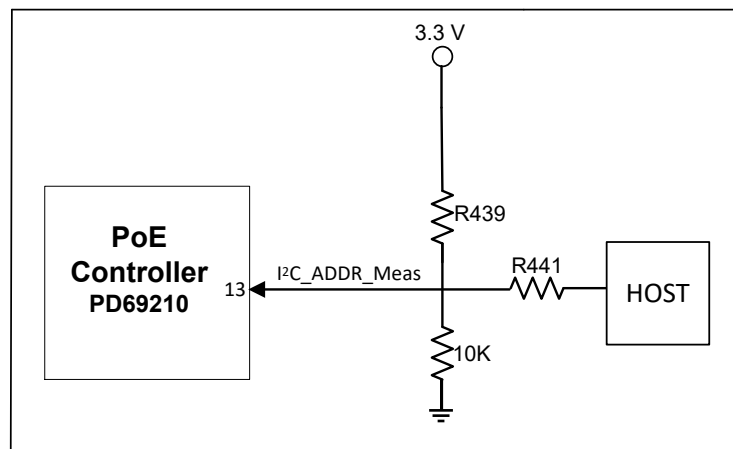


Table 1-1. I²C Address Settings

I ² C Address	Address (Hex)	R439 (kΩ)
#0	UART	N.C
#1	0x4	147
#2	0x8	86.6
#3	0xC	57.6
#4	0x10	43.2
#5	0x14	34
#6	0x18	26.7
#7	0x1C	22.1
#8	0x20	18.2
#9	0x24	15.4
#10	0x28	13
#11	0x2C	11

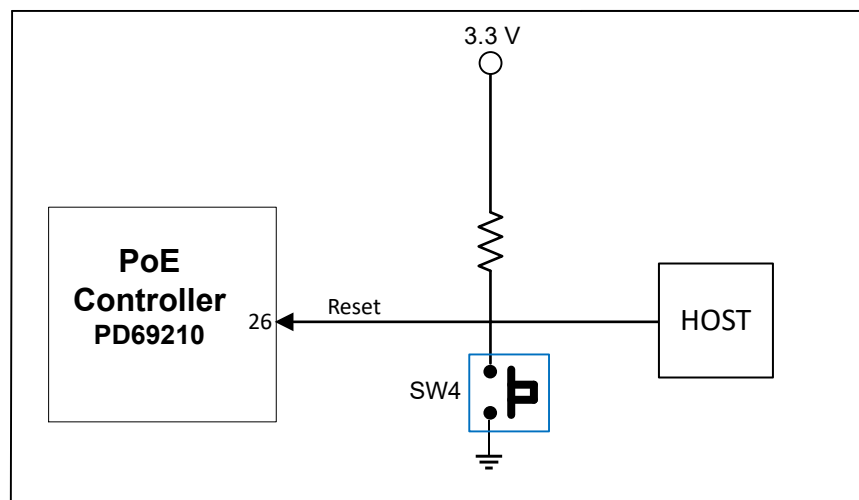
.....continued		
I ² C Address	Address (Hex)	R439 (kΩ)
#12	0x30	9.31
#13	0x34	7.87
#14	0x38	6.49
#15	0x3C	5.49

1.2.2 Reset Push-button Settings

The push-button is connected to the Reset pin of the PD69210 (Pin 26). Pressing on switch SW4 connects the Reset pin to GND. The host can reset the board by setting this pin to '0'.

The following figure shows switch SW4.

Figure 1-3. Reset Control Diagram



1.2.3 PoE Ports Disable Settings

The jumper J12 is connected to the Disable pin of the PD69210 (Pin 4). When the jumper J12 is installed, the Disable pin is connected to GND. The host can disable all port by setting this pin to '0'.

The following figure shows the J12 jumper settings.

Figure 1-4. Ports Disable Control Jumper Diagram

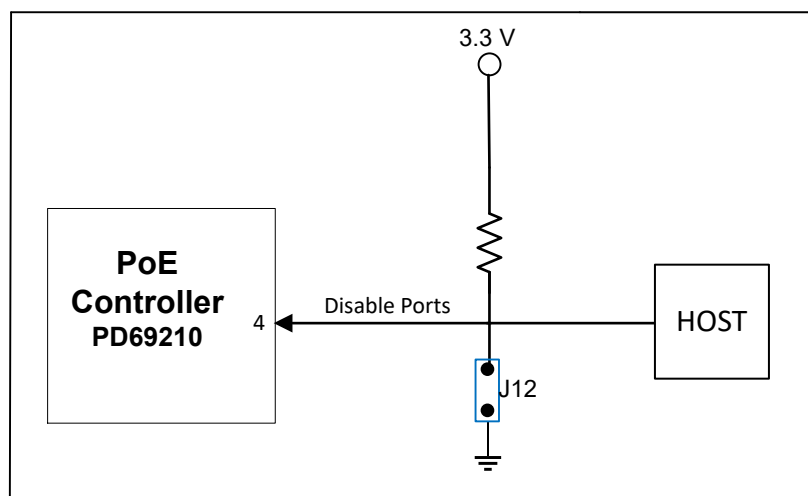
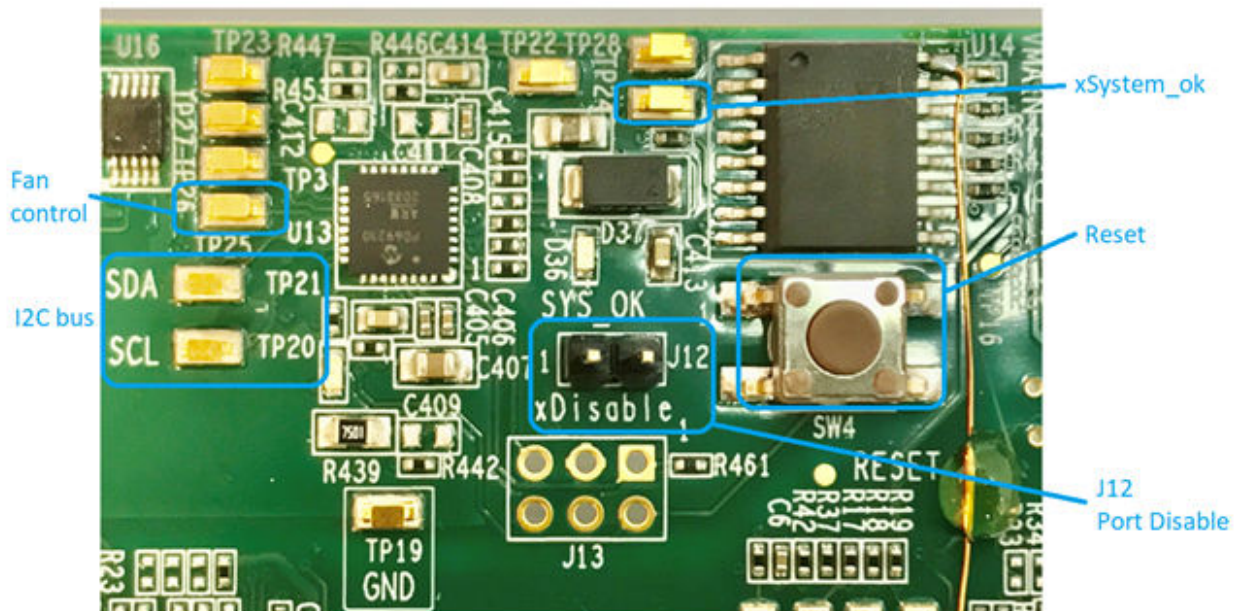


Figure 1-5. I²C Bus Test Point and Control Signals

1.2.4 Power Good Input (PGD0–PGD3) Settings

The EVB supports feeding from up to four power supplies, which includes 16 power banks (bank0 to bank15). Each power supply must generate a digital signal (3.3 V_{DC}), which indicates the power supply is active. The generated digital signal must be connected to one of the PGD pins of PD69208 (pins 41, 46, 47, and 56).

On the EVB, four PGD pins are pulled-down with a 10K resistor to DGND, which sets the default power bank to 0x00. To set a different bank than 0x00, the user can use the PG0-PG3 test points, located next to U3.

Figure 1-6. PGD0-PGD3 Test Points Diagram

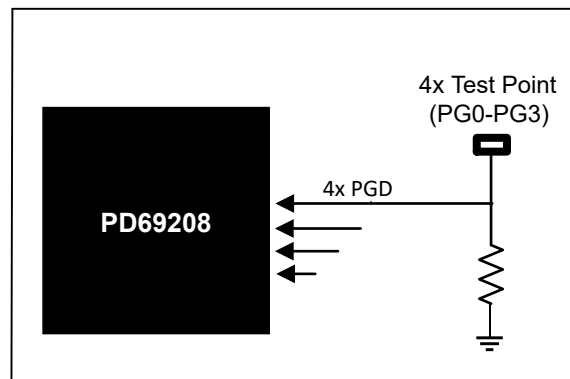
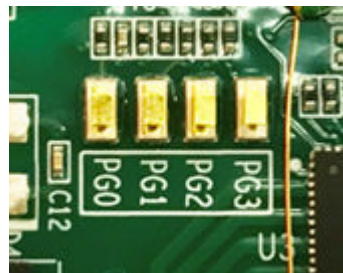


Figure 1-7. PGD0-PGD3 Test Points



1.3 LED Indication

The following table lists the evaluation board status indication LEDs.

Table 1-2. LED List

Designation	Function
D34	V _{main} ON
D35	Interrupt out (active-low)
D36	System OK (active-low)
Port (0-23)	Green LED per port: <ul style="list-style-type: none">• LED OFF= Port is OFF• LED ON= Port is ON• LED blinking= Port is OFF due to error/under load/power management

2. Installation and Settings

This section describes the installation and operation settings of the EV14Y36A evaluation board.

Take the following precautions before starting the installation.

- Ensure that the power supply of the board is turned off before plugging in the DC connector.
- Ensure the correct polarity of the power supply cable. The polarity of the power supply cable is as shown in [Figure 1-1](#).
- Install the EVB into the motherboard using both ports connectors (J9 and J10) and signal connector (J7).
- Turn the main supply ON after the DC connector is plugged in.
- After turning on the EVB DC power supply, turn on the motherboard power supply.

2.1 Ports Matrix

Ensure that the ports matrix is configured according to the following table.

Table 2-1. Ports Matrix

Logical Port	Physical Port A	Physical Port B
0	16	255
1	17	255
2	18	255
3	19	255
4	20	255
5	21	255
6	22	255
7	23	255
8	0	24
9	1	25
10	2	26
11	3	27
12	4	28
13	5	29
14	6	30
15	7	31
16	8	32
17	9	33
18	10	34
19	11	35
20	12	36
21	13	37
22	14	38
23	15	39

2.2 Fuses

On the main board, there are eight fuses for the PD69208, located on top and bottom side, close to the output port connectors J9 and J10. The fuse is connected on the Vport_Negpin of each port.

IEC62368-1 Ed2 (released in October 2018 and effective December 2020) requires per port fuses for a system power supply greater than 250 W.

Figure 2-1. Fuses—Top View

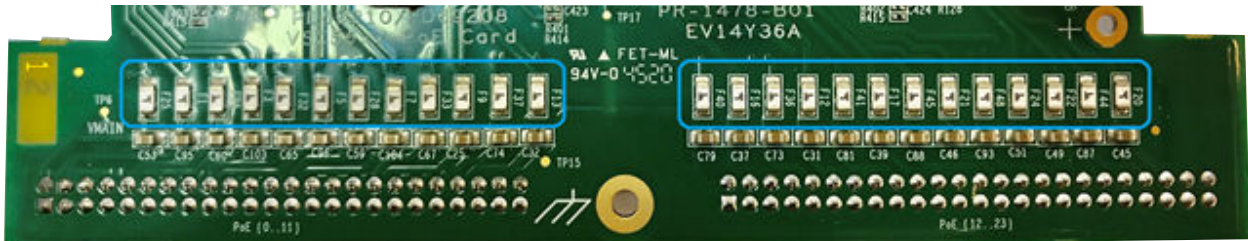
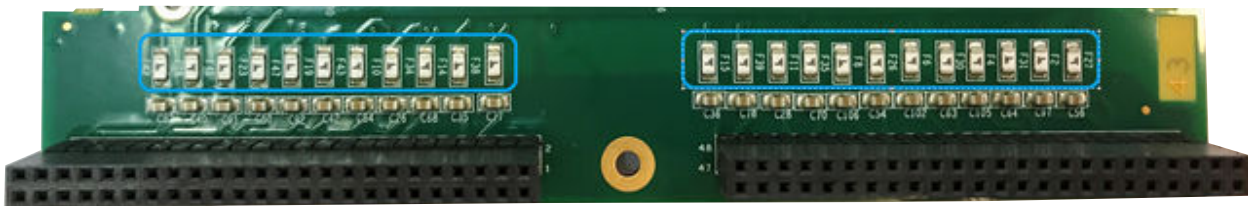
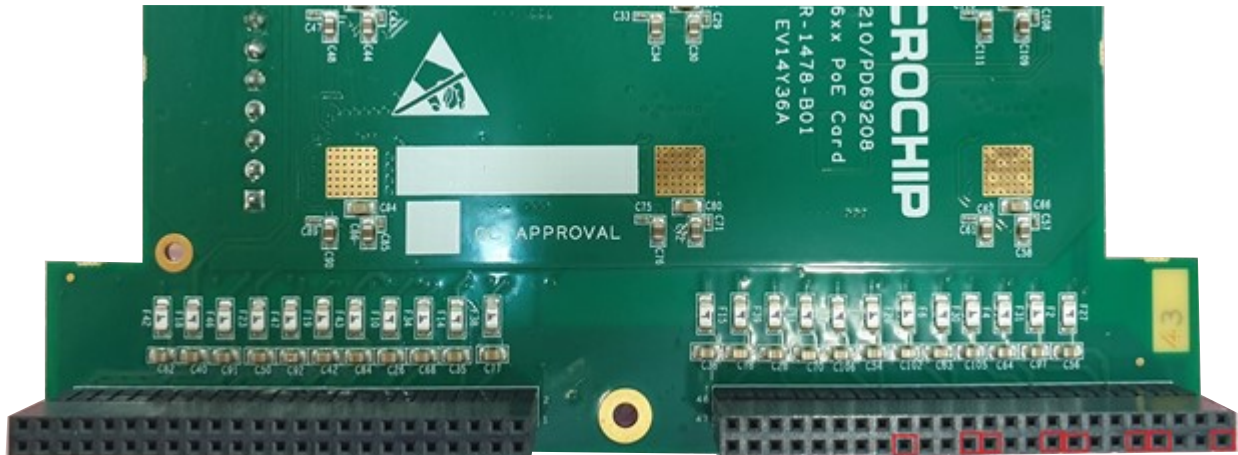


Figure 2-2. Fuses—Bottom View



Important: U1 (PD69208T4 #1) is not populated. Therefore, the EVB supports 8 2-pair ports and 16 4-pair ports. The following figure shows the unconnected pins 1, 7, 9, 15, 17, 23, 25, and 31 in J9.

Figure 2-3. Unconnected Pins in J9

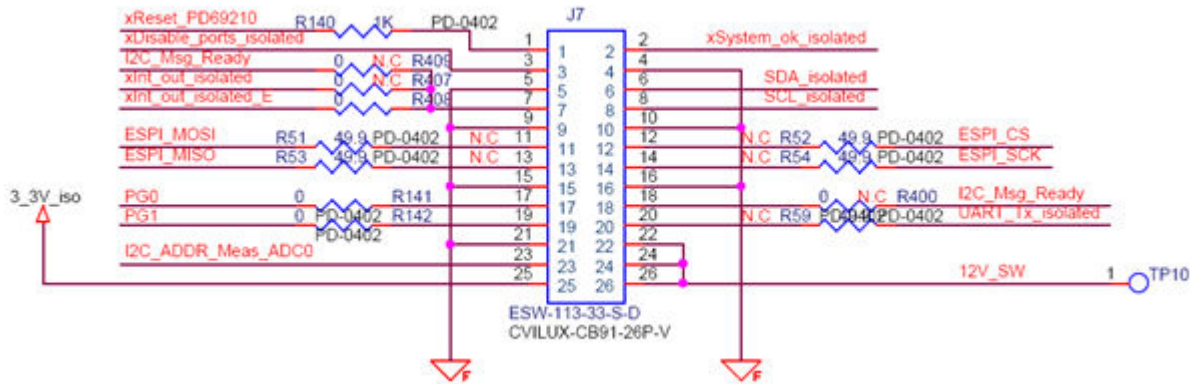


2.3 Connectors J7, J9, and J10

The EV14Y36A EVB contains three connectors that are connected to the host motherboard.

- The J7 carries isolated 3.3 V, control signals, communication signals, and the isolated ESPI signals.

Figure 2-4. Connector J7 Pinout Diagram



- The J9 and J10 carry the 24 PoE ports that have high PoE current.

Signals named VPORT_NEG_OUTn and VPORT_NEG_OUT_Un are connected to the physical ports of PD69208. The current can reach up to 1 A.

Figure 2-5. Connector J9 Pinout Diagram

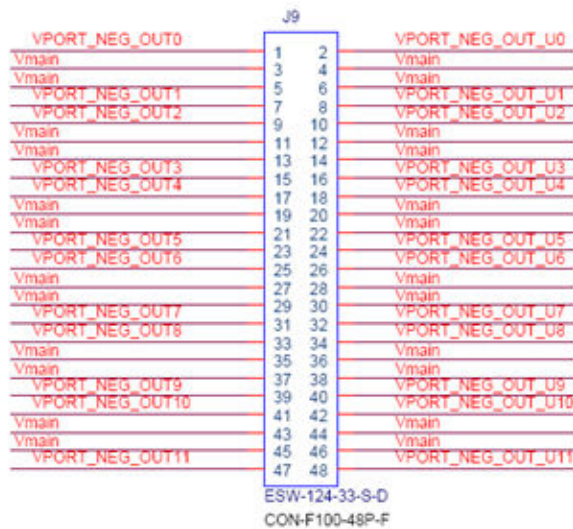
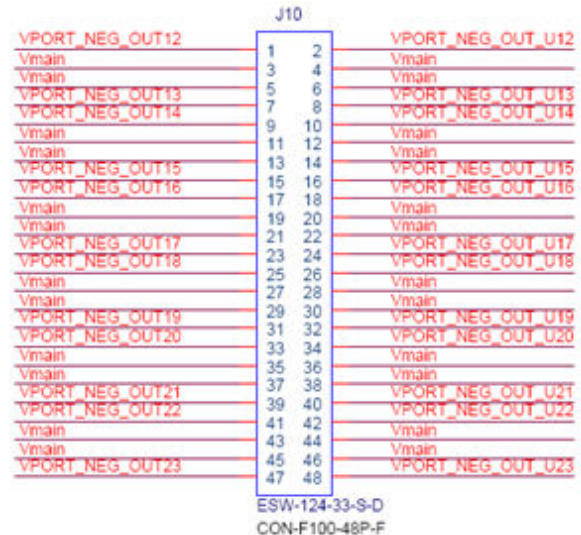


Figure 2-6. Connector J10 Pinout Diagram



2.4 Schematics

The full schematics of the EVB are available on the [Microchip website](#).

3. Revision History

Revision	Date	Description
A	03/2021	Initial Revision

The Microchip Website

Microchip provides online support via our website at www.microchip.com/. This website is used to make files and information easily available to customers. Some of the content available includes:

- **Product Support** – Data sheets and errata, application notes and sample programs, design resources, user's guides and hardware support documents, latest software releases and archived software
- **General Technical Support** – Frequently Asked Questions (FAQs), technical support requests, online discussion groups, Microchip design partner program member listing
- **Business of Microchip** – Product selector and ordering guides, latest Microchip press releases, listing of seminars and events, listings of Microchip sales offices, distributors and factory representatives

Product Change Notification Service

Microchip's product change notification service helps keep customers current on Microchip products. Subscribers will receive email notification whenever there are changes, updates, revisions or errata related to a specified product family or development tool of interest.

To register, go to www.microchip.com/pcn and follow the registration instructions.

Customer Support

Users of Microchip products can receive assistance through several channels:

- Distributor or Representative
- Local Sales Office
- Embedded Solutions Engineer (ESE)
- Technical Support

Customers should contact their distributor, representative or ESE for support. Local sales offices are also available to help customers. A listing of sales offices and locations is included in this document.

Technical support is available through the website at: www.microchip.com/support

Microchip Devices Code Protection Feature

Note the following details of the code protection feature on Microchip devices:

- Microchip products meet the specifications contained in their particular Microchip Data Sheet.
- Microchip believes that its family of products is secure when used in the intended manner and under normal conditions.
- There are dishonest and possibly illegal methods being used in attempts to breach the code protection features of the Microchip devices. We believe that these methods require using the Microchip products in a manner outside the operating specifications contained in Microchip's Data Sheets. Attempts to breach these code protection features, most likely, cannot be accomplished without violating Microchip's intellectual property rights.
- Microchip is willing to work with any customer who is concerned about the integrity of its code.
- Neither Microchip nor any other semiconductor manufacturer can guarantee the security of its code. Code protection does not mean that we are guaranteeing the product is "unbreakable." Code protection is constantly evolving. We at Microchip are committed to continuously improving the code protection features of our products. Attempts to break Microchip's code protection feature may be a violation of the Digital Millennium Copyright Act. If such acts allow unauthorized access to your software or other copyrighted work, you may have a right to sue for relief under that Act.

Legal Notice

Information contained in this publication is provided for the sole purpose of designing with and using Microchip products. Information regarding device applications and the like is provided only for your convenience and may be superseded by updates. It is your responsibility to ensure that your application meets with your specifications.

THIS INFORMATION IS PROVIDED BY MICROCHIP "AS IS". MICROCHIP MAKES NO REPRESENTATIONS OR WARRANTIES OF ANY KIND WHETHER EXPRESS OR IMPLIED, WRITTEN OR ORAL, STATUTORY OR OTHERWISE, RELATED TO THE INFORMATION INCLUDING BUT NOT LIMITED TO ANY IMPLIED WARRANTIES OF NON-INFRINGEMENT, MERCHANTABILITY, AND FITNESS FOR A PARTICULAR PURPOSE OR WARRANTIES RELATED TO ITS CONDITION, QUALITY, OR PERFORMANCE.

IN NO EVENT WILL MICROCHIP BE LIABLE FOR ANY INDIRECT, SPECIAL, PUNITIVE, INCIDENTAL OR CONSEQUENTIAL LOSS, DAMAGE, COST OR EXPENSE OF ANY KIND WHATSOEVER RELATED TO THE INFORMATION OR ITS USE, HOWEVER CAUSED, EVEN IF MICROCHIP HAS BEEN ADVISED OF THE POSSIBILITY OR THE DAMAGES ARE FORESEEABLE. TO THE FULLEST EXTENT ALLOWED BY LAW, MICROCHIP'S TOTAL LIABILITY ON ALL CLAIMS IN ANY WAY RELATED TO THE INFORMATION OR ITS USE WILL NOT EXCEED THE AMOUNT OF FEES, IF ANY, THAT YOU HAVE PAID DIRECTLY TO MICROCHIP FOR THE INFORMATION. Use of Microchip devices in life support and/or safety applications is entirely at the buyer's risk, and the buyer agrees to defend, indemnify and hold harmless Microchip from any and all damages, claims, suits, or expenses resulting from such use. No licenses are conveyed, implicitly or otherwise, under any Microchip intellectual property rights unless otherwise stated.

Trademarks

The Microchip name and logo, the Microchip logo, Adaptec, AnyRate, AVR, AVR logo, AVR Freaks, BesTime, BitCloud, chipKIT, chipKIT logo, CryptoMemory, CryptoRF, dsPIC, FlashFlex, flexPWR, HELDO, IGLOO, JukeBlox, KeeLoq, Kleer, LANCheck, LinkMD, maXStylus, maXTouch, MediaLB, megaAVR, Microsemi, Microsemi logo, MOST, MOST logo, MPLAB, OptoLyzer, PackeTime, PIC, picoPower, PICSTART, PIC32 logo, PolarFire, Prochip Designer, QTouch, SAM-BA, SenGenuity, SpyNIC, SST, SST Logo, SuperFlash, Symmetricom, SyncServer, Tachyon, TimeSource, tinyAVR, UNI/O, Vectron, and XMEGA are registered trademarks of Microchip Technology Incorporated in the U.S.A. and other countries.

AgileSwitch, APT, ClockWorks, The Embedded Control Solutions Company, EtherSynch, FlashTec, Hyper Speed Control, HyperLight Load, IntelliMOS, Libero, motorBench, mTouch, Powermite 3, Precision Edge, ProASIC, ProASIC Plus, ProASIC Plus logo, Quiet-Wire, SmartFusion, SyncWorld, Temux, TimeCesium, TimeHub, TimePictra, TimeProvider, WinPath, and ZL are registered trademarks of Microchip Technology Incorporated in the U.S.A.

Adjacent Key Suppression, AKS, Analog-for-the-Digital Age, Any Capacitor, AnyIn, AnyOut, Augmented Switching, BlueSky, BodyCom, CodeGuard, CryptoAuthentication, CryptoAutomotive, CryptoCompanion, CryptoController, dsPICDEM, dsPICDEM.net, Dynamic Average Matching, DAM, ECAN, Espresso T1S, EtherGREEN, IdealBridge, In-Circuit Serial Programming, ICSP, INICnet, Intelligent Paralleling, Inter-Chip Connectivity, JitterBlocker, maxCrypto, maxView, memBrain, Mindi, MiWi, MPASM, MPF, MPLAB Certified logo, MPLIB, MPLINK, MultiTRAK, NetDetach, Omniscient Code Generation, PICDEM, PICDEM.net, PICKit, PICtail, PowerSmart, PureSilicon, QMatrix, REAL ICE, Ripple Blocker, RTAX, RTG4, SAM-ICE, Serial Quad I/O, simpleMAP, SimpliPHY, SmartBuffer, SMART-I.S., storClad, SQL, SuperSwitcher, SuperSwitcher II, Switchtec, SynchroPHY, Total Endurance, TSHARC, USBCheck, VariSense, VectorBlox, VeriPHY, ViewSpan, WiperLock, XpressConnect, and ZENA are trademarks of Microchip Technology Incorporated in the U.S.A. and other countries.

SQTP is a service mark of Microchip Technology Incorporated in the U.S.A.

The Adaptec logo, Frequency on Demand, Silicon Storage Technology, and Symmcom are registered trademarks of Microchip Technology Inc. in other countries.

GestIC is a registered trademark of Microchip Technology Germany II GmbH & Co. KG, a subsidiary of Microchip Technology Inc., in other countries.

All other trademarks mentioned herein are property of their respective companies.

© 2021, Microchip Technology Incorporated, Printed in the U.S.A., All Rights Reserved.

ISBN: 978-1-5224-7942-0

Quality Management System

For information regarding Microchip's Quality Management Systems, please visit www.microchip.com/quality.

Worldwide Sales and Service

AMERICAS	ASIA/PACIFIC	ASIA/PACIFIC	EUROPE
Corporate Office 2355 West Chandler Blvd. Chandler, AZ 85224-6199 Tel: 480-792-7200 Fax: 480-792-7277 Technical Support: www.microchip.com/support Web Address: www.microchip.com	Australia - Sydney Tel: 61-2-9868-6733 China - Beijing Tel: 86-10-8569-7000 China - Chengdu Tel: 86-28-8665-5511 China - Chongqing Tel: 86-23-8980-9588 China - Dongguan Tel: 86-769-8702-9880 China - Guangzhou Tel: 86-20-8755-8029 China - Hangzhou Tel: 86-571-8792-8115 China - Hong Kong SAR Tel: 852-2943-5100 China - Nanjing Tel: 86-25-8473-2460 China - Qingdao Tel: 86-532-8502-7355 China - Shanghai Tel: 86-21-3326-8000 China - Shenyang Tel: 86-24-2334-2829 China - Shenzhen Tel: 86-755-8864-2200 China - Suzhou Tel: 86-186-6233-1526 China - Wuhan Tel: 86-27-5980-5300 China - Xian Tel: 86-29-8833-7252 China - Xiamen Tel: 86-592-2388138 China - Zhuhai Tel: 86-756-3210040	India - Bangalore Tel: 91-80-3090-4444 India - New Delhi Tel: 91-11-4160-8631 India - Pune Tel: 91-20-4121-0141 Japan - Osaka Tel: 81-6-6152-7160 Japan - Tokyo Tel: 81-3-6880-3770 Korea - Daegu Tel: 82-53-744-4301 Korea - Seoul Tel: 82-2-554-7200 Malaysia - Kuala Lumpur Tel: 60-3-7651-7906 Malaysia - Penang Tel: 60-4-227-8870 Philippines - Manila Tel: 63-2-634-9065 Singapore Tel: 65-6334-8870 Taiwan - Hsin Chu Tel: 886-3-577-8366 Taiwan - Kaohsiung Tel: 886-7-213-7830 Taiwan - Taipei Tel: 886-2-2508-8600 Thailand - Bangkok Tel: 66-2-694-1351 Vietnam - Ho Chi Minh Tel: 84-28-5448-2100	Austria - Wels Tel: 43-7242-2244-39 Fax: 43-7242-2244-393 Denmark - Copenhagen Tel: 45-4485-5910 Fax: 45-4485-2829 Finland - Espoo Tel: 358-9-4520-820 France - Paris Tel: 33-1-69-53-63-20 Fax: 33-1-69-30-90-79 Germany - Garching Tel: 49-8931-9700 Germany - Haan Tel: 49-2129-3766400 Germany - Heilbronn Tel: 49-7131-72400 Germany - Karlsruhe Tel: 49-721-625370 Germany - Munich Tel: 49-89-627-144-0 Fax: 49-89-627-144-44 Germany - Rosenheim Tel: 49-8031-354-560 Israel - Ra'anana Tel: 972-9-744-7705 Italy - Milan Tel: 39-0331-742611 Fax: 39-0331-466781 Italy - Padova Tel: 39-049-7625286 Netherlands - Drunen Tel: 31-416-690399 Fax: 31-416-690340 Norway - Trondheim Tel: 47-72884388 Poland - Warsaw Tel: 48-22-3325737 Romania - Bucharest Tel: 40-21-407-87-50 Spain - Madrid Tel: 34-91-708-08-90 Fax: 34-91-708-08-91 Sweden - Gothenberg Tel: 46-31-704-60-40 Sweden - Stockholm Tel: 46-8-5090-4654 UK - Wokingham Tel: 44-118-921-5800 Fax: 44-118-921-5820

Mouser Electronics

Authorized Distributor

Click to View Pricing, Inventory, Delivery & Lifecycle Information:

[Microchip:](#)

[EV14Y36A](#)