
Upgrading the Atmel CryptoAuthentication/Tempsensor Kit Firmware Using FLIP

Overview

- Demonstrates how to upgrade the Atmel[®] CryptoAuthentication[™] and Atmel Tempsensor kit firmware via USB.
- Demonstrates the Atmel FLexible In-system Programming (FLIP) software utility.

Introduction

This document describes the steps required to program the following Atmel CryptoAuthentication and Atmel Tempsensor kits:

- AT88Microbase
- AT30TK175STK
- AT88CK101STK8
- AT88CK201STK
- AT88SC-ADK2
- AT88CK490
- AT88CK590

1 Firmware Upgrade Procedures

Step 1 Install the *FL*exible *In*-system Programming (FLIP) Software Utility

The FLIP software utility can be downloaded at the following link:

www.atmel.com/tools/flip.aspx?tab=overview

Alternatively, if the Atmel Crypto Evaluation Studio (ACES) software is already installed, the FLIP installer is available in one of the following directories:

C:\Program Files\Atmel\Crypto Solutions\Firmware\Flip or
C:\Program Files (x86)\Atmel\Crypto Solutions\Firmware\Flip

Step 2 Place the Atmel AVR® AT90USBxxx into the Device Firmware Upgrade (DFU) Mode

All Atmel AVR AT90USBxxx-based kits are shipped with a default factory preprogrammed USB boot loader located in the on-chip boot section. There are two methods to enable the DFU mode on the crypto kits:

► Method 1: AT88Microbase Board's *HWB* and *RESET* buttons

This method uses the *HWB* and *RESET* buttons on the AT88Microbase board. The AT88Microbase serves as the base module for the AT30TK175STK, AT88CK101STK8, AT88CK201STK, and AT88SC-ADK2 kits.

Enable DFU mode with the *HWB* and *RESET* buttons by following the next three steps:



These steps *must* be completed in the exact sequence.

1. **Press** and **hold** the *HWB* button.
2. **Press** and **release** the *RESET* button.
3. **Release** the *HWB* button.

The kits which incorporate the AT88Microbase board as the base module will toggle all three LEDs prior to entering the DFU mode.

► Method 2: DFU Enabling Application



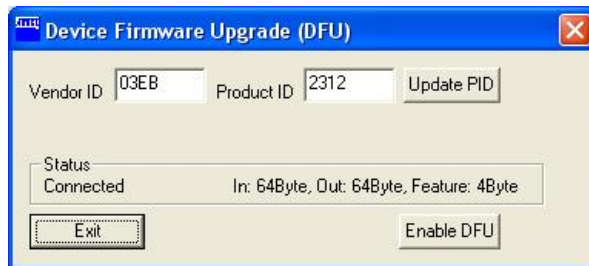
This method is the *only* way to place the AT88CK490/590 kit into the DFU mode as these kits do not have a **HWB** button.

This method involves a small DFU enabling application which is installed with ACES and CMES (Crypto Memory Evaluation Studio). The application is located at:

C:\Program Files\Atmel\Crypto Solutions\Firmware\DFU or
C:\Program Files (x86)\Atmel\Crypto Solutions\Firmware\DFU.

1. Using this DFU enabling application, insert the kit into an available USB port.
2. Wait for enumeration, and then click the **Enable DFU** button as shown in the figure below.

Figure 1-1. Device Firmware Upgrade (DFU) Window



Step 3 Install the Driver

After placing the kit into DFU mode, the **Found New Hardware Wizard** notification will appear.

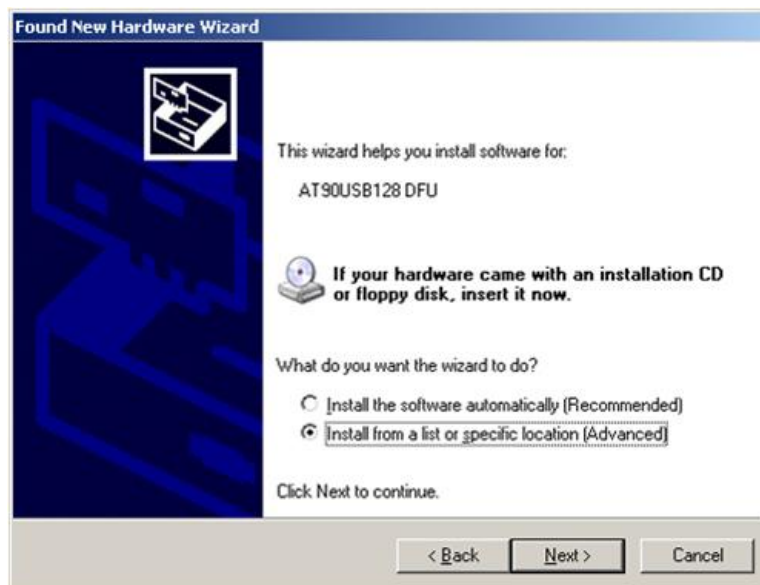
1. Select **Yes, this time only**, and then click **Next >** to continue.

Figure 1-2. Found New Hardware Wizard Notification



2. Select the **Install from a list or specific location (Advanced)**, and then click **Next >** to continue.

Figure 1-3. Install Software



3. Select **Browse** and locate the most recent downloaded FLIP version, and then select the **usb** subdirectory. Click **Next >** to continue.

Figure 1-4. Browse for Driver



4. The driver installation is now complete. Click **Finish**.

Figure 1-5. Wizard Complete



Step 4 Load New Firmware

1. Launch the FLIP utility, and then click on the **Device Selection** icon.
2. In the **Device Selection** pop-up window, select the target device, i.e. AT90USB1287, and then click the **OK** button.

Figure 1-6. Device Selection

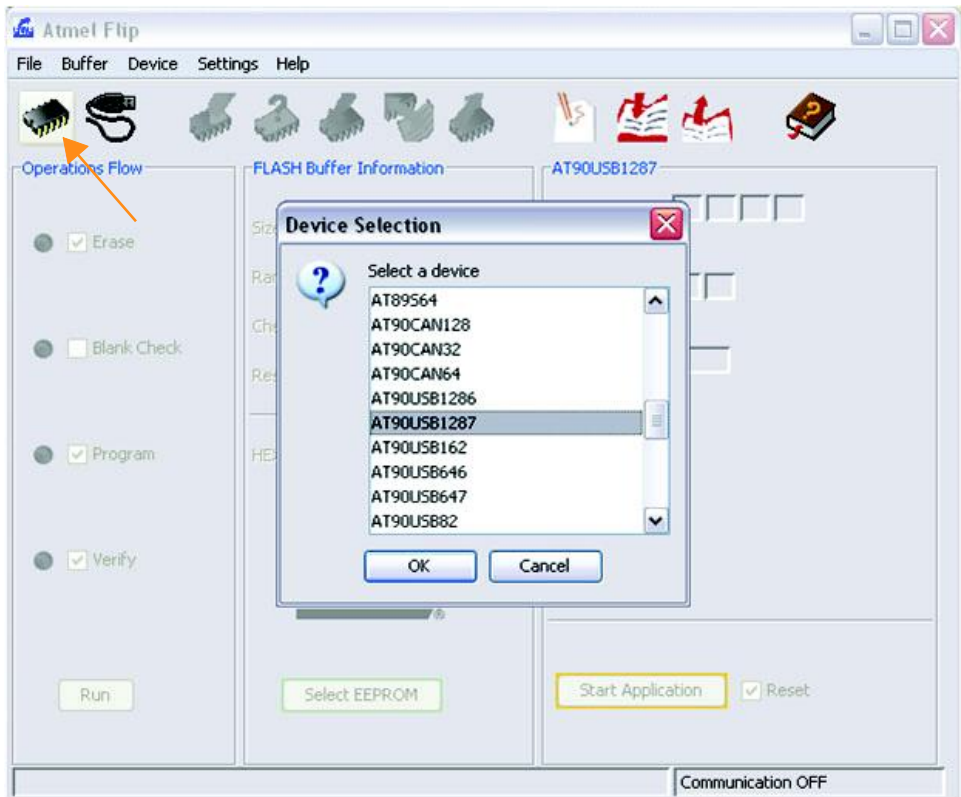
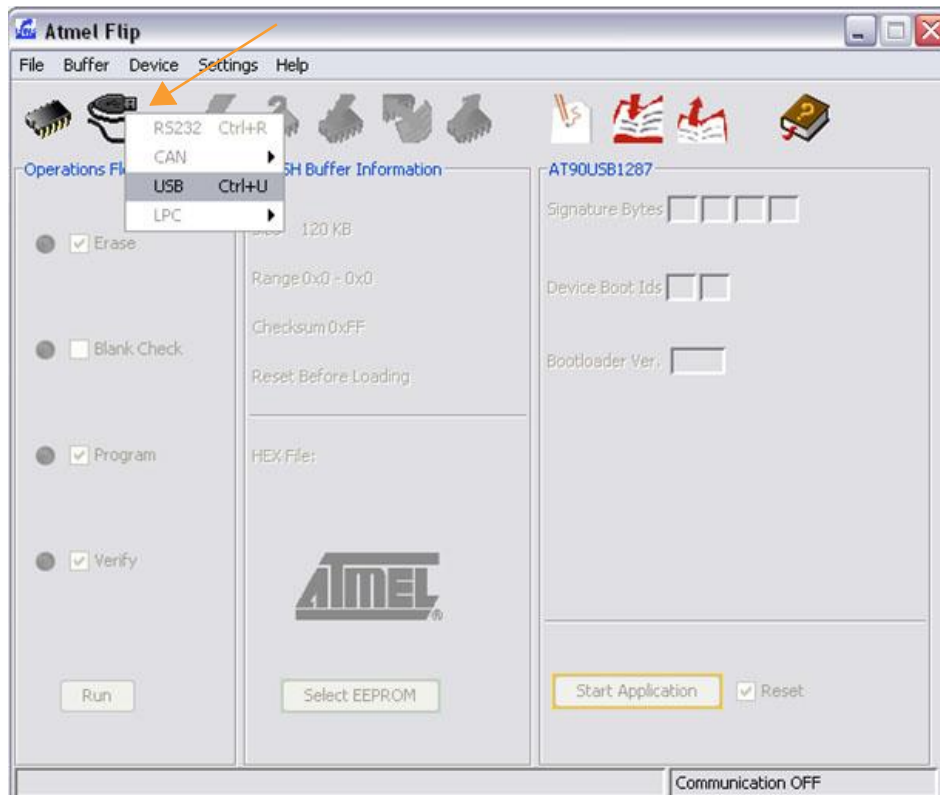


Table 1-1. Kit Device Selection

Atmel Kit	Atmel AVR Device Selection
AT88Microbase AT30TK175STK AT88CK101STK8 AT88CK201STK AT88CK490 AT88CK590	AT90USB1287
AT88SC-ADK2	AT90USB647

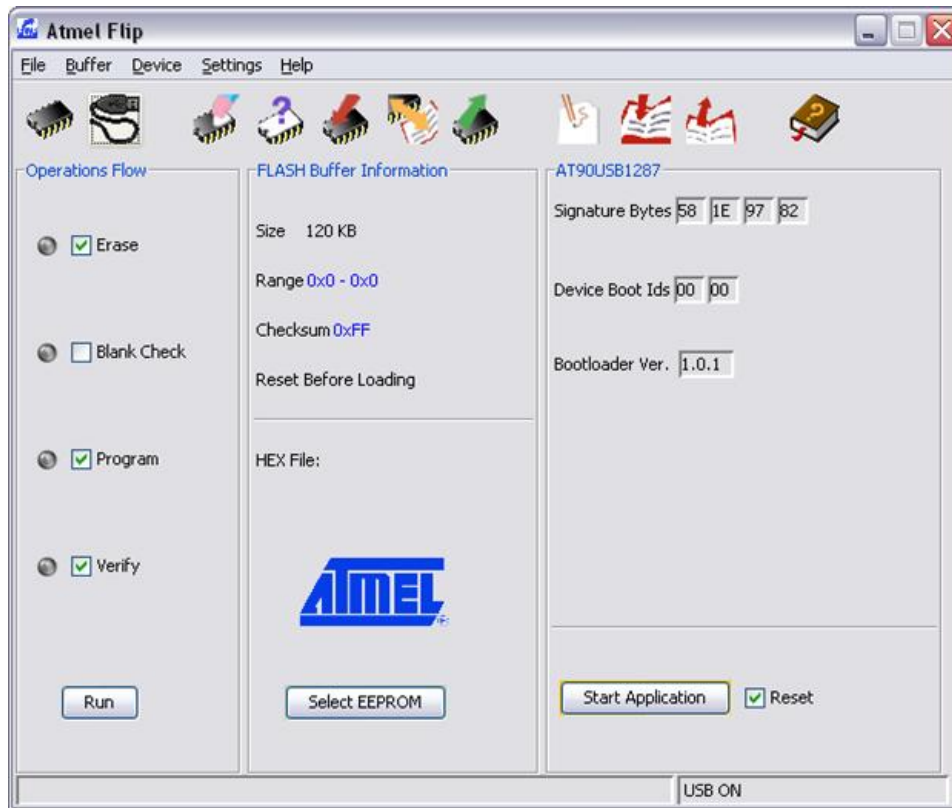
3. Click on the Communication Medium icon. Then, from the pop-up window, select USB.

Figure 1-7. Communication Medium Selection



4. On the toolbar, select **File** to select the hex file for downloading.
5. Click the **Run** button to download the hex file.
6. After a successful download, all the checked options in the **Operations Flow** column will change to green check marks.
7. Click the **Start Application** button.

Figure 1-8. Start the Application



2 Revision History

Doc Rev.	Date	Comments
8726C	11/2015	Corrected FLIP link address and hyperlink. Removed the AT88CK101STK3, AT88CK109STK3, AT88CK109STK8, AT88CK440RED, AT88CKBLACK, and AT88CK427GREEN. Added the AT88CK590 kit.
8746B	01/2014	Added the AT88CK490 kit and update document template.
8746A	05/2011	Initial document release.



Atmel Corporation 1600 Technology Drive, San Jose, CA 95110 USA T: (+1)(408) 441.0311 F: (+1)(408) 436.4200 | www.atmel.com

© 2015 Atmel Corporation. / Rev.:Atmel-8746C-CryptoAuth-Upgrading-CryptoAuth-Temp-Kit-Firmware-Using-FLIP-ApplicationNote_112015.

Atmel®, Atmel logo and combinations thereof, Enabling Unlimited Possibilities®, and others are registered trademarks or trademarks of Atmel Corporation in U.S. and other countries. ARM®, ARM Connected® logo, and others are the registered trademarks or trademarks of ARM Ltd. Other terms and product names may be trademarks of others.

DISCLAIMER: The information in this document is provided in connection with Atmel products. No license, express or implied, by estoppel or otherwise, to any intellectual property right is granted by this document or in connection with the sale of Atmel products. EXCEPT AS SET FORTH IN THE ATMEL TERMS AND CONDITIONS OF SALES LOCATED ON THE ATMEL WEBSITE, ATMEL ASSUMES NO LIABILITY WHATSOEVER AND DISCLAIMS ANY EXPRESS, IMPLIED OR STATUTORY WARRANTY RELATING TO ITS PRODUCTS INCLUDING, BUT NOT LIMITED TO, THE IMPLIED WARRANTY OF MERCHANTABILITY, FITNESS FOR A PARTICULAR PURPOSE, OR NON-INFRINGEMENT. IN NO EVENT SHALL ATMEL BE LIABLE FOR ANY DIRECT, INDIRECT, CONSEQUENTIAL, PUNITIVE, SPECIAL OR INCIDENTAL DAMAGES (INCLUDING, WITHOUT LIMITATION, DAMAGES FOR LOSS AND PROFITS, BUSINESS INTERRUPTION, OR LOSS OF INFORMATION) ARISING OUT OF THE USE OR INABILITY TO USE THIS DOCUMENT, EVEN IF ATMEL HAS BEEN ADVISED OF THE POSSIBILITY OF SUCH DAMAGES. Atmel makes no representations or warranties with respect to the accuracy or completeness of the contents of this document and reserves the right to make changes to specifications and products descriptions at any time without notice. Atmel does not make any commitment to update the information contained herein. Unless specifically provided otherwise, Atmel products are not suitable for, and shall not be used in, automotive applications. Atmel products are not intended, authorized, or warranted for use as components in applications intended to support or sustain life.

SAFETY-CRITICAL, MILITARY, AND AUTOMOTIVE APPLICATIONS DISCLAIMER: Atmel products are not designed for and will not be used in connection with any applications where the failure of such products would reasonably be expected to result in significant personal injury or death ("Safety-Critical Applications") without an Atmel officer's specific written consent. Safety-Critical Applications include, without limitation, life support devices and systems, equipment or systems for the operation of nuclear facilities and weapons systems. Atmel products are not designed nor intended for use in military or aerospace applications or environments unless specifically designated by Atmel as military-grade. Atmel products are not designed nor intended for use in automotive applications unless specifically designated by Atmel as automotive-grade.

Mouser Electronics

Authorized Distributor

Click to View Pricing, Inventory, Delivery & Lifecycle Information:

[Microchip:](#)

[AT88SC-ADK2](#)