

## 1.5A Dual Open-Drain MOSFET Drivers

### Features

- Independently Programmable Rise and Fall Times
- Low Output Impedance:  $7\Omega$  Typical
- High Speed  $t_R$ ,  $t_F$ :  $<30$  ns with 1000 pF Load
- Short Delay Times:  $<30$  ns
- Wide Operating Range: 4.5V to 18V
- Latch-Up Protected: withstands  $> 500$  mA Reverse Current (Either Polarity)
- Input Withstands Negative Swings up to -5V

### Applications

- Motor Controls
- Driving Bipolar Transistors
- Driver for Non-Overlapping Totem Poles
- Reach-Up/Reach-Down Driver

**TABLE 1: DEVICE SELECTION TABLE**

Part Number	Package	Temp. Range
TC4404COA	8-Lead SOIC	$0^{\circ}\text{C}$ to $+70^{\circ}\text{C}$
TC4404CPA	8-Lead PDIP	$0^{\circ}\text{C}$ to $+70^{\circ}\text{C}$
TC4404EOA	8-Lead SOIC	$-40^{\circ}\text{C}$ to $+85^{\circ}\text{C}$
TC4404EPA	8-Lead PDIP	$-40^{\circ}\text{C}$ to $+85^{\circ}\text{C}$
TC4405COA	8-Lead SOIC	$0^{\circ}\text{C}$ to $+70^{\circ}\text{C}$
TC4405CPA	8-Lead PDIP	$0^{\circ}\text{C}$ to $+70^{\circ}\text{C}$
TC4405EOA	8-Lead SOIC	$-40^{\circ}\text{C}$ to $+85^{\circ}\text{C}$
TC4405EPA	8-Lead PDIP	$-40^{\circ}\text{C}$ to $+85^{\circ}\text{C}$

### General Description

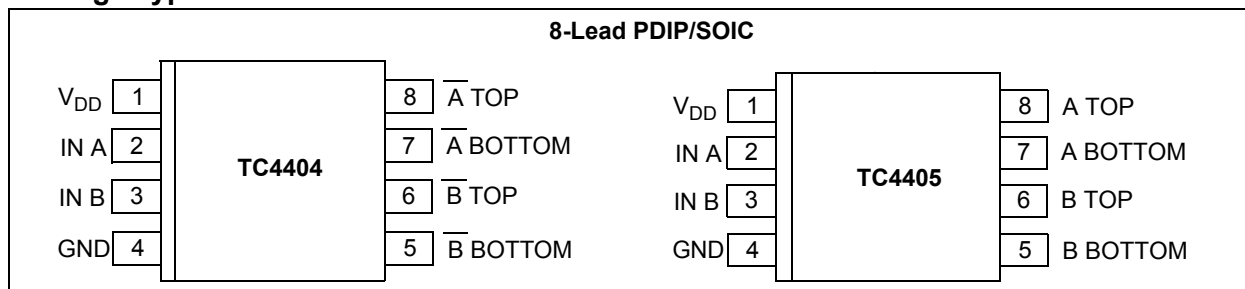
The TC4404/TC4405 are CMOS buffer-drivers constructed with complementary MOS outputs, where the drains of the totem-pole output have been left separated so that individual connections can be made to the pull-up and pull-down sections of the output. This allows the insertion of drain-current-limiting resistors in the pull-up and/or pull-down sections, allowing the user to define the rates of rise and fall for a capacitive load. It also enables a reduced output swing, if driving a resistive load, or limiting base current when driving a bipolar transistor. Minimum rise and fall times, with no resistors, will be less than 30 ns for a 1000 pF load.

For driving MOSFETs in motor-control applications, where slow-ON/fast-OFF operation is desired, these devices are superior to the previously used technique of adding a diode-resistor combination between the driver output and the MOSFET, because they allow accurate control of turn-on, while maintaining fast turn-off and maximum noise immunity for an OFF device.

When used to drive bipolar transistors, these drivers maintain the high speeds common to other Microchip drivers. They allow insertion of a base current-limiting resistor, while providing a separate half-output for fast turn-off. By proper positioning of the resistor, either NPN or PNP transistors can be driven.

For driving many loads in low-power regimes, these drivers require significantly less power at higher frequencies and can be helpful in meeting low-power budgets as they eliminate shoot-through currents in the output stage.

### Package Type

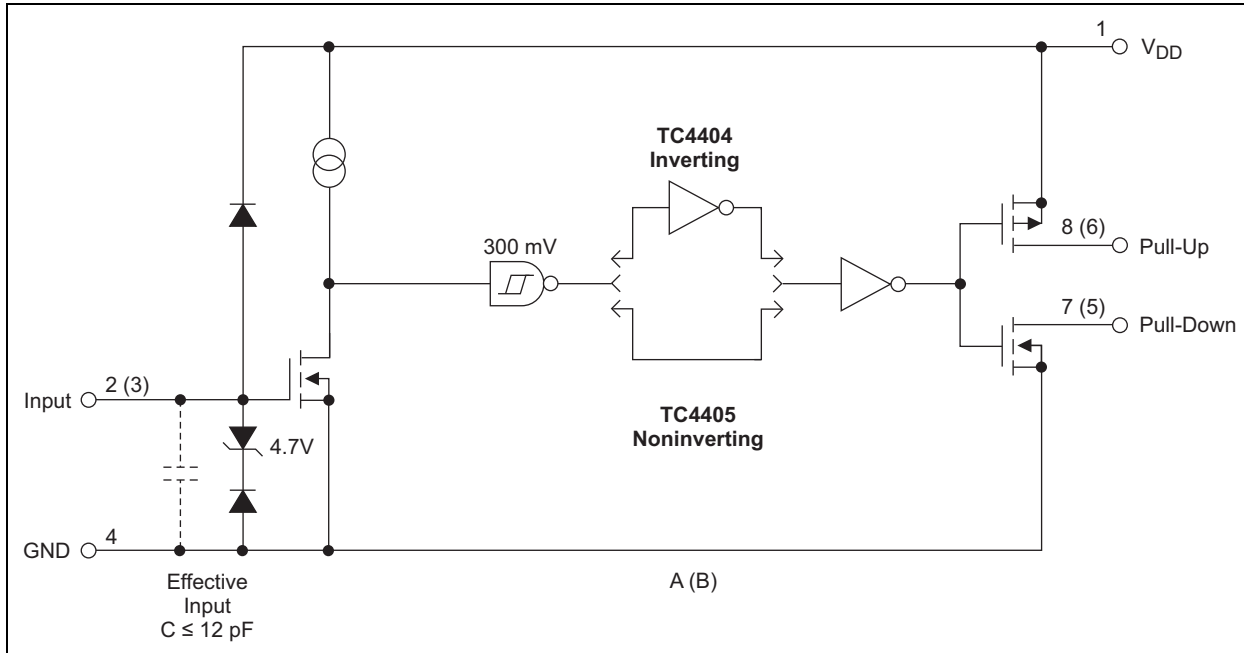


# TC4404/TC4405

Because neither drain in an output is dependent on the other, these devices can also be used as open-drain buffer/drivers where both drains are available in one device, thus minimizing chip count. Unused open drains should be returned to the supply rail so that their device sources are connected (pull-downs to ground, pull-ups to  $V_{DD}$ ), to prevent static damage. In addition, in situations where timing resistors or other means of limiting crossover currents are used, like drains from drivers A and B, they may be paralleled for greater current carrying capacity.

These devices are built to operate in the most demanding electrical environments. They will not latch-up under any conditions within their power and voltage ratings; they are not subject to damage when up to 5V of noise spiking of either polarity occurs on their ground pin; and they can accept, without damage or logic upset, up to 0.5A of reverse current (of either polarity) being forced back into their outputs. All terminals are fully protected against up to 2 kV (HBM) of electrostatic discharge.

## Functional Block Diagram



## 1.0 ELECTRICAL CHARACTERISTICS

### Absolute Maximum Ratings †

Supply Voltage .....	+22V
Power Dissipation ( $T_A \leq +70^\circ\text{C}$ )	
PDIP .....	730 mW
SOIC .....	470 mW
Operating Temperature Range	
C Version .....	$0^\circ\text{C}$ to $+70^\circ\text{C}$
E Version .....	$-40^\circ\text{C}$ to $+85^\circ\text{C}$
Storage Temperature Range .....	$-65^\circ\text{C}$ to $+150^\circ\text{C}$

† **Notice:** Stresses above those listed under “Absolute Maximum Ratings” may cause permanent damage to the device. This is a stress rating only and functional operation of the device at those or any other conditions above those indicated in the operational sections of this specification is not intended. Exposure to maximum rating conditions for extended periods may affect device reliability.

### DC CHARACTERISTICS

**Electrical Characteristics:** Unless otherwise specified, all limits apply for typical values at ambient temperature  $T_A = +25^\circ\text{C}$ , with  $4.5\text{V} \leq V_{DD} \leq 18\text{V}$ .

Parameter	Sym.	Min.	Typ.	Max.	Units	Conditions
<b>Input</b>						
Logic 1, High Input Voltage	$V_{IH}$	2.4	—	—	V	
Logic 0, Low Input Voltage	$V_{IL}$	—	—	0.8	V	
Input Current	$I_{IN}$	-1	—	1	$\mu\text{A}$	$0\text{V} \leq V_{IN} \leq V_{DD}$
<b>Output</b>						
High Output Voltage	$V_{OH}$	$V_{DD} - 0.025$	—	—	V	
Low Output Voltage	$V_{OL}$	—	—	0.025	V	
Output Resistance	$R_O$	—	7	10	$\Omega$	$I_{OUT} = 10\text{ mA}$ , $V_{DD} = 18\text{V}$ ; any drain
Peak Output Current (Any Drain)	$I_{PK}$	—	1.5	—	A	Duty cycle $\leq 2\%$ , $t \leq 300\text{ }\mu\text{sec}$
Continuous Output Current (Any Drain)	$I_{DC}$	—	—	100	mA	
Latch-Up Protection (Any Drain) Withstand Reverse Current	$I_R$	—	$> 500$	—	mA	Duty cycle $\leq 2\%$ , $t \leq 300\text{ }\mu\text{sec}$
<b>Switching Time (Note 1)</b>						
Rise Time	$t_R$	—	25	30	ns	Figure 4-1, $C_L = 1000\text{ pF}$
Fall Time	$t_F$	—	25	30	ns	Figure 4-1, $C_L = 1000\text{ pF}$
Delay Time	$t_{D1}$	—	15	30	ns	Figure 4-1, $C_L = 1000\text{ pF}$
Delay Time	$t_{D2}$	—	32	50	ns	Figure 4-1, $C_L = 1000\text{ pF}$
<b>Power Supply</b>						
Power Supply Current	$I_S$	—	—	4.5 0.4	mA	$V_{IN} = 3\text{V}$ (both inputs) $V_{IN} = 0\text{V}$ (both inputs)

**Note 1:** Switching times ensured by design.

# TC4404/TC4405

## DC CHARACTERISTICS (OVER OPERATING TEMPERATURE RANGE)

<b>Electrical Characteristics:</b> Unless otherwise indicated, operating temperature range with $4.5V \leq V_{DD} \leq 18V$ .						
Parameter	Sym.	Min.	Typ.	Max.	Units	Conditions
Logic 1, High Input Voltage	$V_{IH}$	2.4	—	—	V	
Logic 0, Low Input Voltage	$V_{IL}$	—	—	0.8	V	
Input Current	$I_{IN}$	-10	—	10	$\mu A$	$0V \leq V_{IN} \leq V_{DD}$
<b>Output</b>						
High Output Voltage	$V_{OH}$	$V_{DD} - 0.025$	—	—	V	
Low Output Voltage	$V_{OL}$	—	—	0.025	V	
Output Resistance	$R_O$	—	9	12	$\Omega$	$I_{OUT} = 10\text{ mA}$ , $V_{DD} = 18V$ ; any drain
Peak Output Current (Any Drain)	$I_{PK}$	—	1.5	—	A	Duty cycle $\leq 2\%$ , $t \leq 300\text{ }\mu\text{sec}$
Continuous Output Current (Any Drain)	$I_{DC}$	—	—	100	mA	
Latch-Up Protection (Any Drain) Withstand Reverse Current	$I_R$	—	> 500	—	mA	Duty cycle $\leq 2\%$ , $t \leq 300\text{ }\mu\text{sec}$
<b>Switching Time (Note 1)</b>						
Rise Time	$t_R$	—	—	40	ns	Figure 4-1, $C_L = 1000\text{ pF}$
Fall Time	$t_F$	—	—	40	ns	Figure 4-1, $C_L = 1000\text{ pF}$
Delay Time	$t_{D1}$	—	—	40	ns	Figure 4-1, $C_L = 1000\text{ pF}$
Delay Time	$t_{D2}$	—	—	60	ns	Figure 4-1, $C_L = 1000\text{ pF}$
<b>Power Supply</b>						
Power Supply Current	$I_S$	—	—	8 0.6	mA	$V_{IN} = 3V$ (both inputs) $V_{IN} = 0V$ (both inputs)

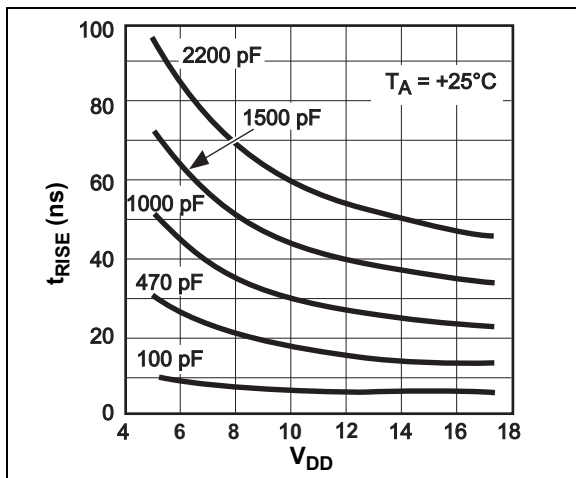
**Note 1:** Switching times ensured by design.

## TEMPERATURE SPECIFICATIONS

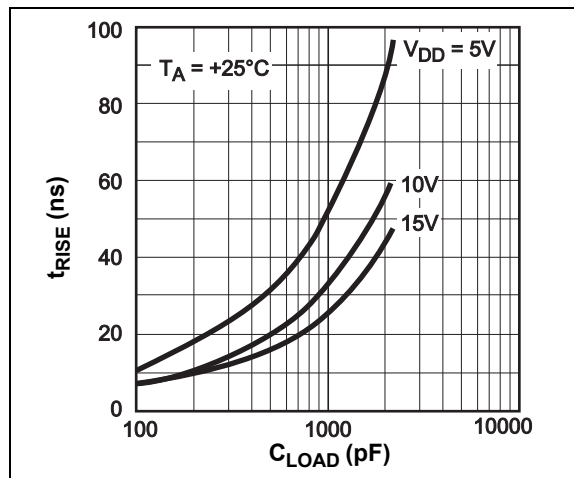
<b>Electrical Specifications:</b> Unless otherwise noted, all parameters apply with $4.5V \leq V_{DD} \leq 18V$ .						
Parameters	Sym.	Min.	Typ.	Max.	Units	Conditions
<b>Temperature Ranges</b>						
Operating Temperature Range, C Version	$T_A$	0	—	+70	$^{\circ}C$	
Operating Temperature Range, E Version	$T_A$	-40	—	+85	$^{\circ}C$	
Storage Temperature Range	$T_A$	-65	—	+150	$^{\circ}C$	
<b>Package Thermal Resistances</b>						
Thermal Resistance, 8-Lead PDIP	$\theta_{JA}$	—	+94	—	$^{\circ}C/W$	
Thermal Resistance, 8-Lead PDIP	$\theta_{JC}$	—	+45	—	$^{\circ}C/W$	
Thermal Resistance, 8-Lead SOIC	$\theta_{JA}$	—	+163	—	$^{\circ}C/W$	
Thermal Resistance, 8-Lead SOIC	$\theta_{JC}$	—	+42	—	$^{\circ}C/W$	

## 2.0 TYPICAL PERFORMANCE CURVES

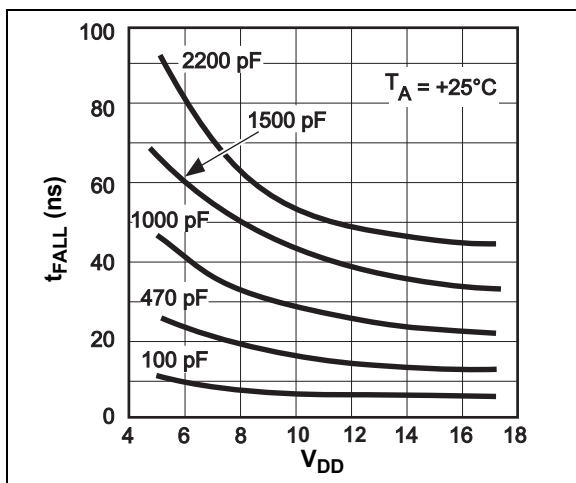
**Note:** The graphs and tables provided following this note are a statistical summary based on a limited number of samples and are provided for informational purposes only. The performance characteristics listed herein are not tested or guaranteed. In some graphs or tables, the data presented may be outside the specified operating range (e.g., outside specified power supply range) and therefore outside the warranted range.



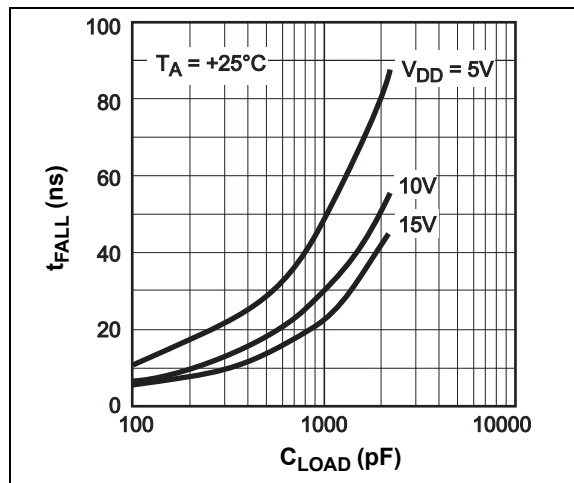
**FIGURE 2-1:** Rise Time vs. Supply Voltage.



**FIGURE 2-3:** Rise Time vs. Capacitive Load.

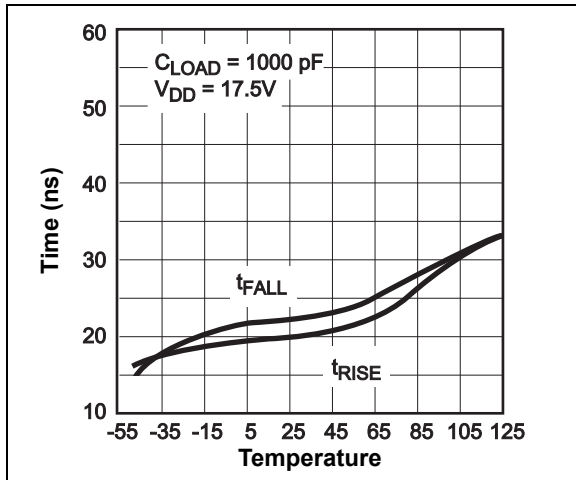


**FIGURE 2-2:** Fall Time vs. Supply Voltage.

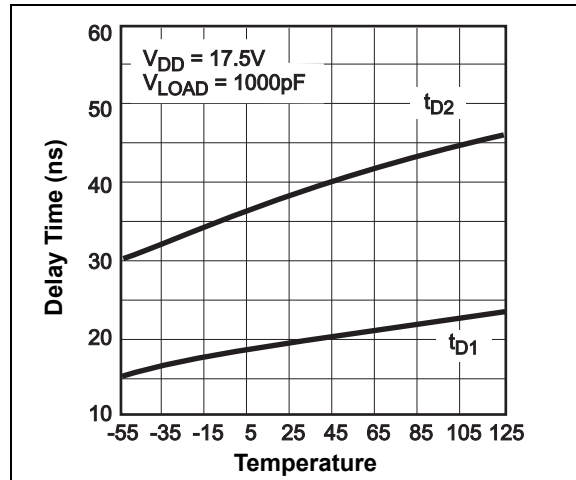


**FIGURE 2-4:** Fall Time vs. Capacitive Load.

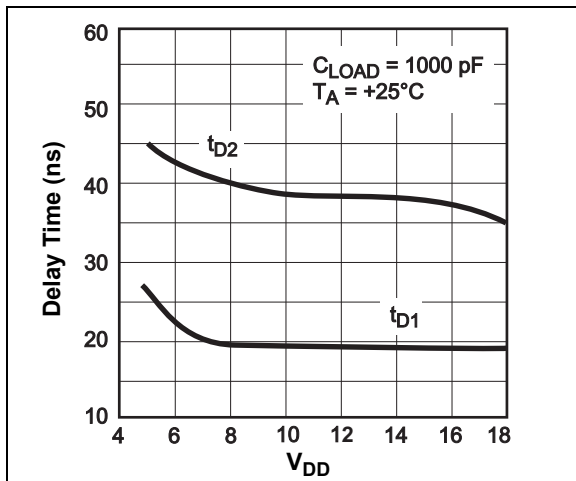
# TC4404/TC4405



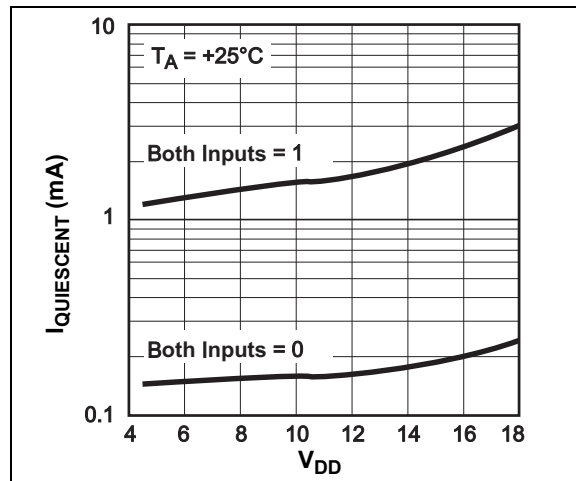
**FIGURE 2-5:** Rise and Fall Times vs. Temperature.



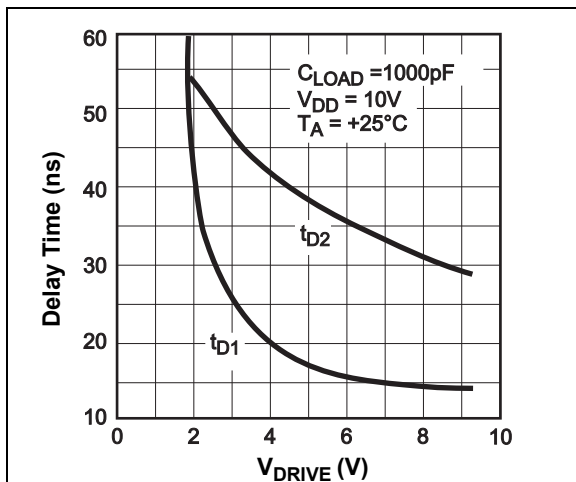
**FIGURE 2-8:** Propagation Delay Time vs. Temperature.



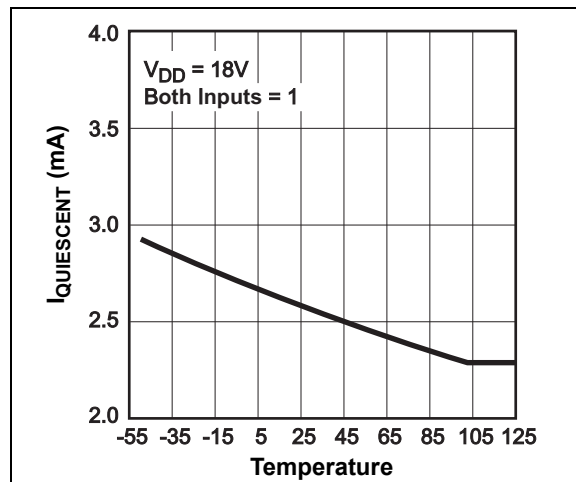
**FIGURE 2-6:** Propagation Delay vs. Supply Voltage.



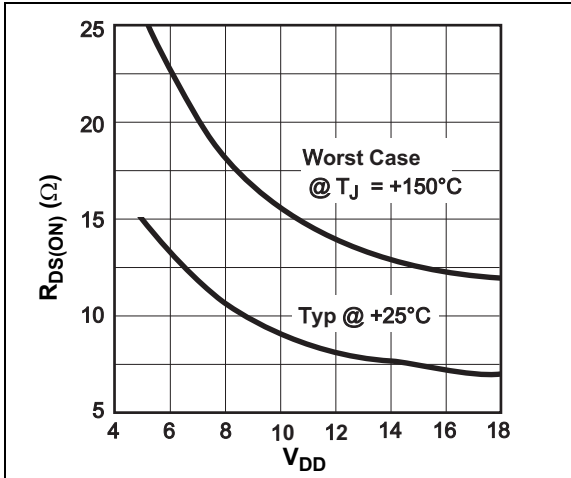
**FIGURE 2-9:** Quiescent Supply Current vs. Voltage.



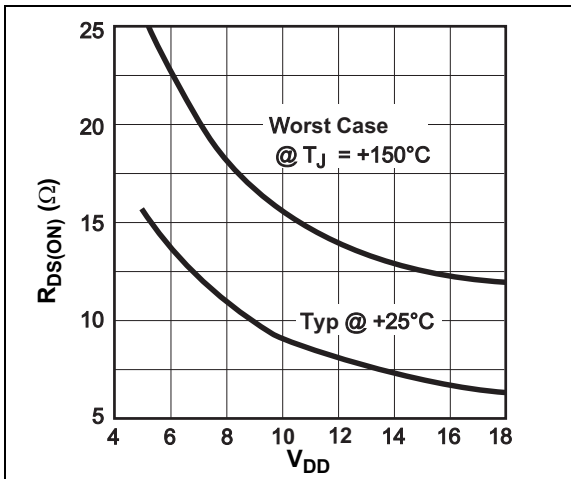
**FIGURE 2-7:** Effect of Input Amplitude on Delay Time.



**FIGURE 2-10:** Quiescent Supply Current vs. Temperature.



**FIGURE 2-11:** Pull-Up Output Resistance.



**FIGURE 2-12:** Pull-Down Output Resistance.

# TC4404/TC4405

---

## 3.0 PIN DESCRIPTIONS

The descriptions of the pins are listed in [Table 3-1](#).

**TABLE 3-1: PIN FUNCTION TABLE**

8-Lead PDIP/SOIC	Symbol	Description
1	V <sub>DD</sub>	Supply Input, 4.5V to 18V
2	IN A	Control Input A, TTL/CMOS compatible input
3	IN B	Control Input B, TTL/CMOS compatible input
4	GND	Ground
5	B BOTTOM	Output B, pull-down
6	B TOP	Output B, pull-up
7	A BOTTOM	Output A, pull-down
8	A TOP	Output A, pull-up

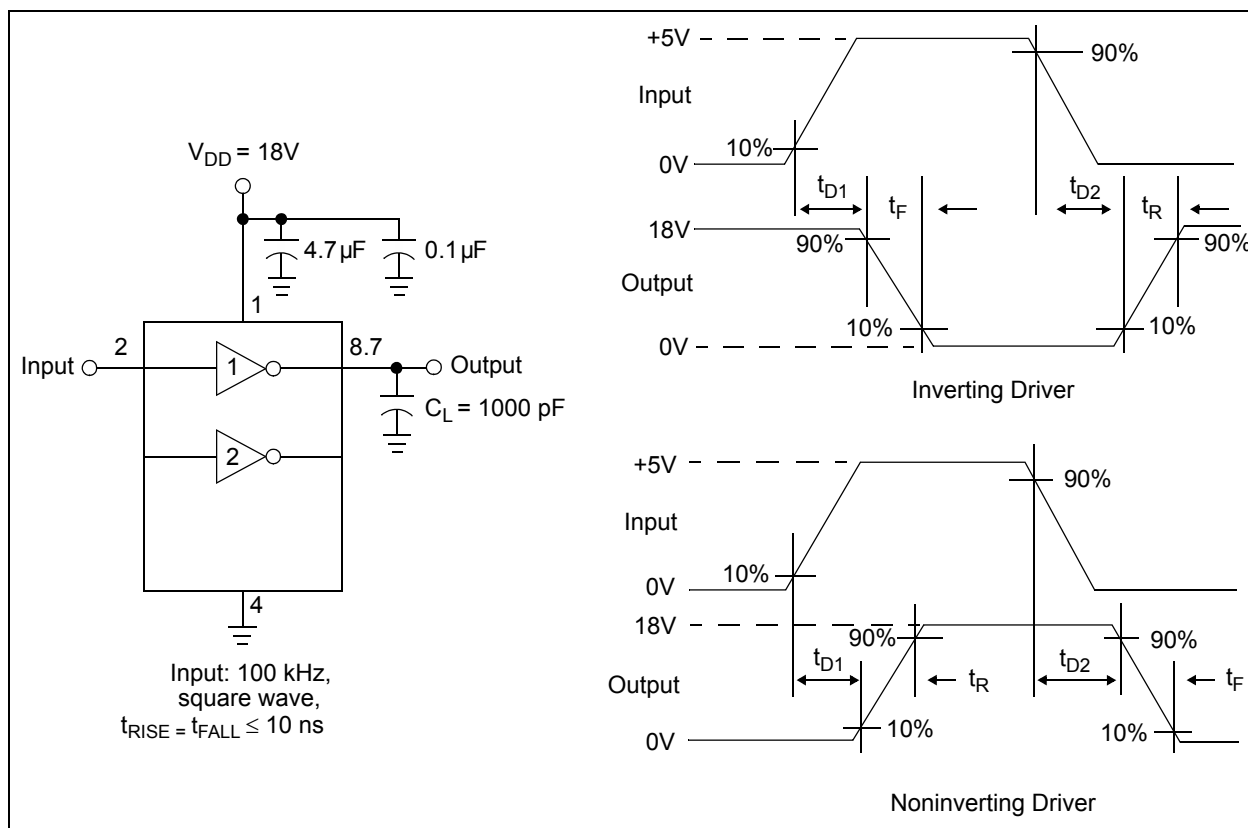


## 4.0 APPLICATIONS INFORMATION

### 4.1 Circuit Layout Guidelines

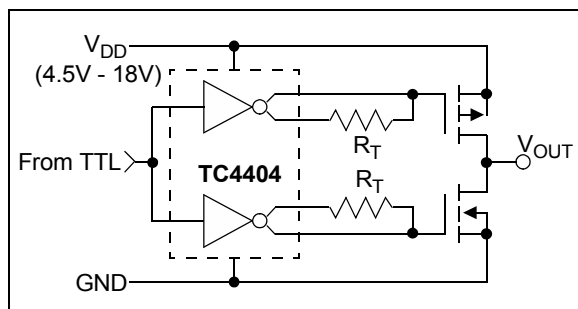
Long power supply and ground traces should be avoided as the added inductance causes unwanted voltage transients. Power and ground planes should be used wherever possible.

In addition, it is advisable that low ESR (Equivalent Series Resistance) bypass capacitors (4.7  $\mu\text{F}$  or 10  $\mu\text{F}$  tantalum) be placed as close to the driver as possible. In order to minimize the length of the output trace, the driver should be physically located as close as possible to the device it is driving.

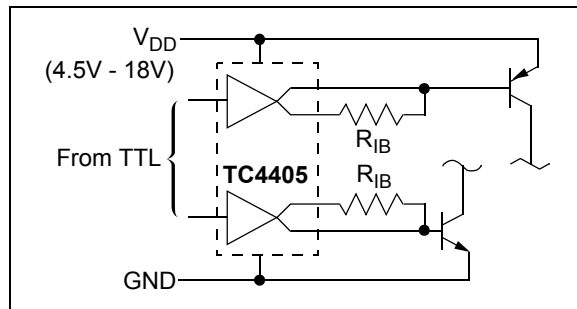


**FIGURE 4-1:** Switching Time Test Circuit.

### 4.2 Typical Applications

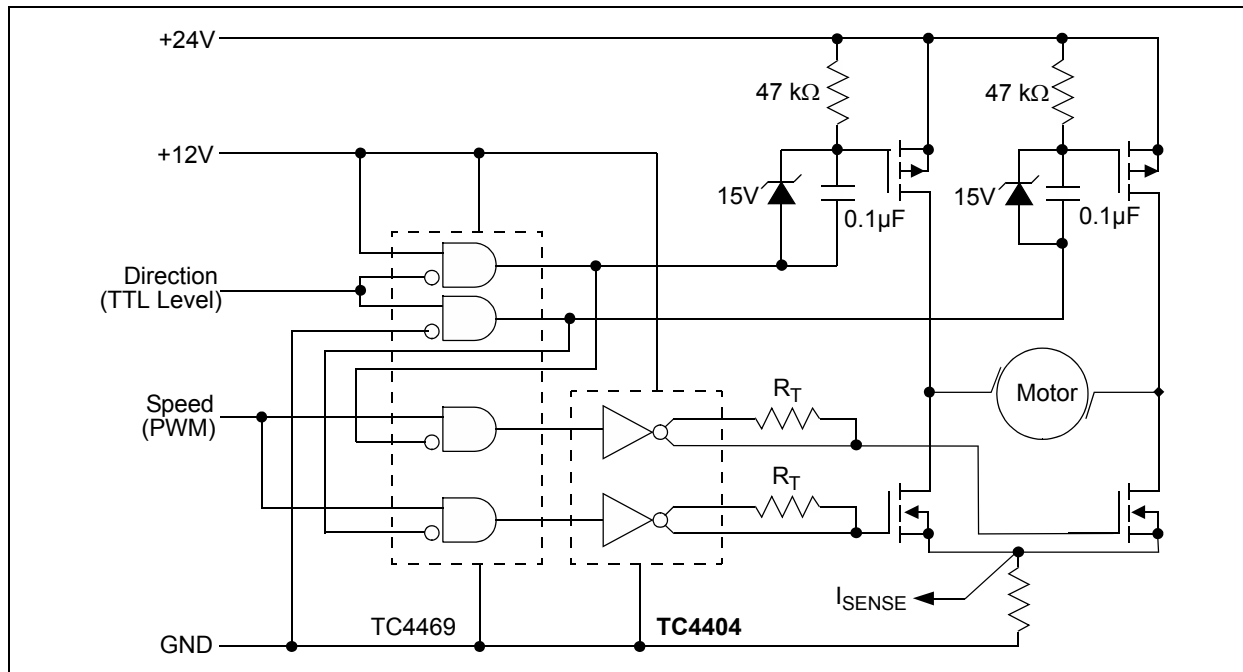


**FIGURE 4-2:** Zero Crossover Current Totem-Pole Switch.

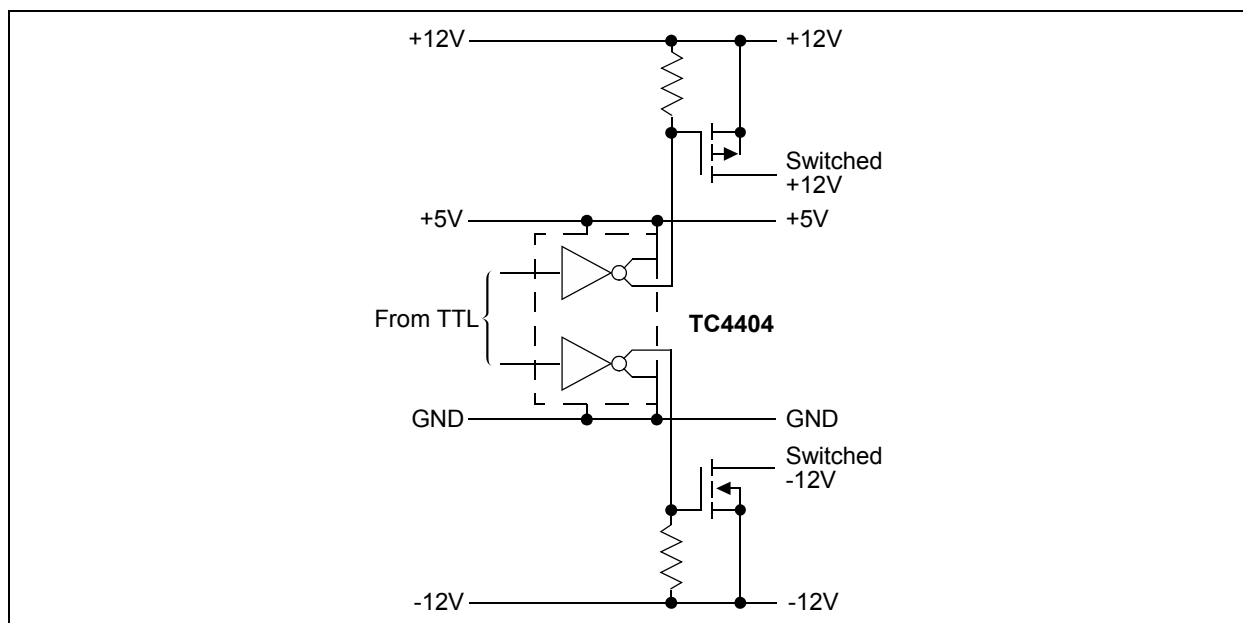


**FIGURE 4-3:** Driving Bipolar Transistors.

# TC4404/TC4405



**FIGURE 4-4:** Servo Motor Control.

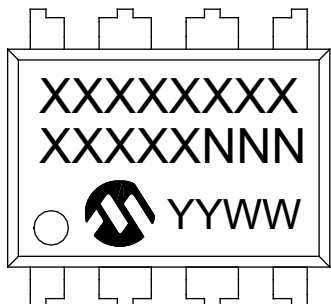


**FIGURE 4-5:** Reach-Up and Reach-Down Driving.

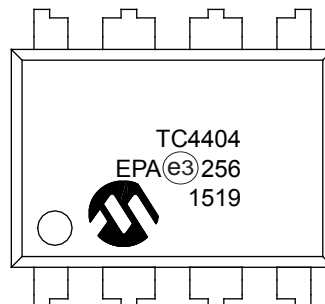
## 5.0 PACKAGING INFORMATION

### 5.1 Package Marking Information

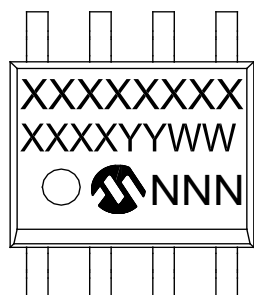
8-Lead PDIP (300 mil)



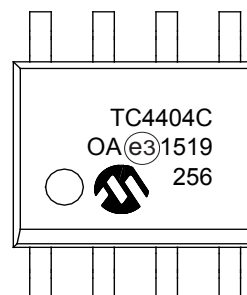
Example



8-Lead SOIC (3.90 mm)



Example



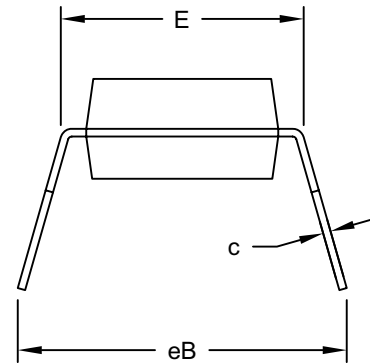
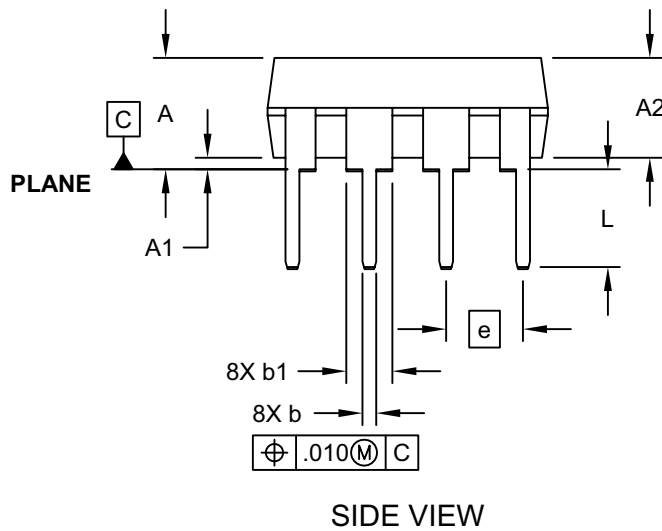
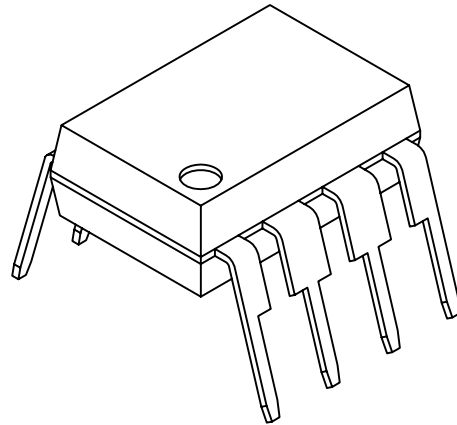
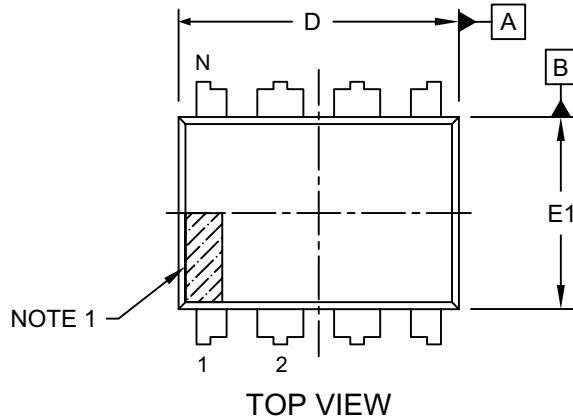
<b>Legend:</b>	XX...X	Customer-specific information
	Y	Year code (last digit of calendar year)
	YY	Year code (last 2 digits of calendar year)
	WW	Week code (week of January 1 is week '01')
	NNN	Alphanumeric traceability code
	(e3)	Pb-free JEDEC designator for Matte Tin (Sn)
	*	This package is Pb-free. The Pb-free JEDEC designator (e3) can be found on the outer packaging for this package.

**Note:** In the event the full Microchip part number cannot be marked on one line, it will be carried over to the next line, thus limiting the number of available characters for customer-specific information.

# TC4404/TC4405

## 8-Lead Plastic Dual In-Line (PA) - 300 mil Body [PDIP]

**Note:** For the most current package drawings, please see the Microchip Packaging Specification located at <http://www.microchip.com/packaging>

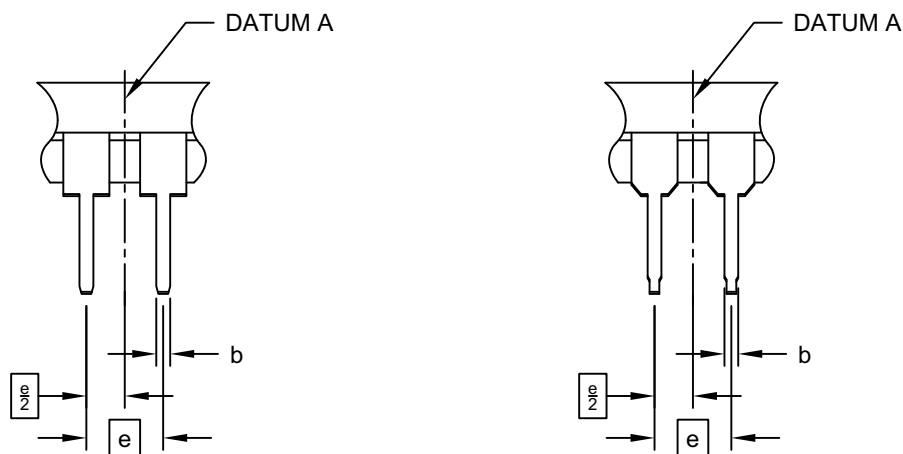


Microchip Technology Drawing No. C04-018D Sheet 1 of 2

## 8-Lead Plastic Dual In-Line (PA) - 300 mil Body [PDIP]

**Note:** For the most current package drawings, please see the Microchip Packaging Specification located at <http://www.microchip.com/packaging>

### ALTERNATE LEAD DESIGN (VENDOR DEPENDENT)



Units		INCHES		
Dimension Limits		MIN	NOM	MAX
Number of Pins	N	8		
Pitch	e	.100 BSC		
Top to Seating Plane	A	-	-	.210
Molded Package Thickness	A2	.115	.130	.195
Base to Seating Plane	A1	.015	-	-
Shoulder to Shoulder Width	E	.290	.310	.325
Molded Package Width	E1	.240	.250	.280
Overall Length	D	.348	.365	.400
Tip to Seating Plane	L	.115	.130	.150
Lead Thickness	c	.008	.010	.015
Upper Lead Width	b1	.040	.060	.070
Lower Lead Width	b	.014	.018	.022
Overall Row Spacing	§	eB	-	.430

#### Notes:

- Pin 1 visual index feature may vary, but must be located within the hatched area.
- § Significant Characteristic
- Dimensions D and E1 do not include mold flash or protrusions. Mold flash or protrusions shall not exceed .010" per side.
- Dimensioning and tolerancing per ASME Y14.5M

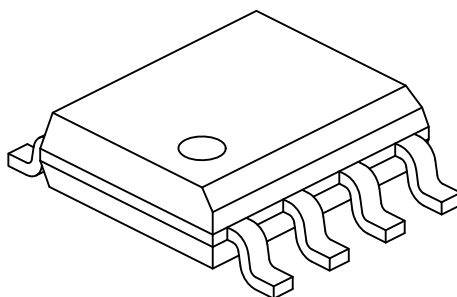
BSC: Basic Dimension. Theoretically exact value shown without tolerances.

Microchip Technology Drawing No. C04-018D Sheet 2 of 2



## 8-Lead Plastic Small Outline (OA) - Narrow, 3.90 mm Body [SOIC]

**Note:** For the most current package drawings, please see the Microchip Packaging Specification located at <http://www.microchip.com/packaging>



Dimension Limits	Units	MILLIMETERS		
		MIN	NOM	MAX
Number of Pins	N	8		
Pitch	e	1.27 BSC		
Overall Height	A	-	-	1.75
Molded Package Thickness	A2	1.25	-	-
Standoff §	A1	0.10	-	0.25
Overall Width	E	6.00 BSC		
Molded Package Width	E1	3.90 BSC		
Overall Length	D	4.90 BSC		
Chamfer (Optional)	h	0.25	-	0.50
Foot Length	L	0.40	-	1.27
Footprint	L1	1.04 REF		
Foot Angle	φ	0°	-	8°
Lead Thickness	c	0.17	-	0.25
Lead Width	b	0.31	-	0.51
Mold Draft Angle Top	α	5°	-	15°
Mold Draft Angle Bottom	β	5°	-	15°

### Notes:

- Pin 1 visual index feature may vary, but must be located within the hatched area.
- § Significant Characteristic
- Dimensions D and E1 do not include mold flash or protrusions. Mold flash or protrusions shall not exceed 0.15mm per side.
- Dimensioning and tolerancing per ASME Y14.5M

BSC: Basic Dimension. Theoretically exact value shown without tolerances.

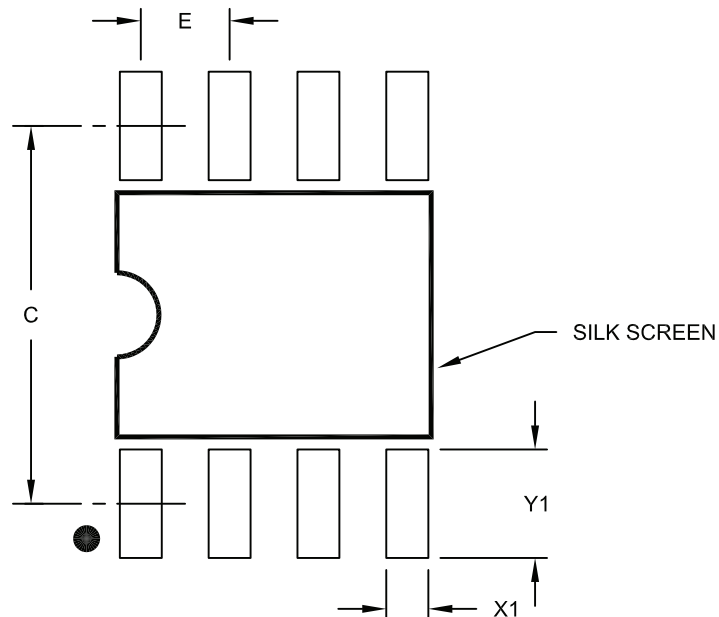
REF: Reference Dimension, usually without tolerance, for information purposes only.

Microchip Technology Drawing No. C04-057C Sheet 2 of 2

# TC4404/TC4405

## 8-Lead Plastic Small Outline (OA) – Narrow, 3.90 mm Body [SOIC]

**Note:** For the most current package drawings, please see the Microchip Packaging Specification located at <http://www.microchip.com/packaging>



RECOMMENDED LAND PATTERN

Units		MILLIMETERS		
Dimension Limits		MIN	NOM	MAX
Contact Pitch	E	1.27 BSC		
Contact Pad Spacing	C		5.40	
Contact Pad Width (X8)	X1			0.60
Contact Pad Length (X8)	Y1			1.55

**Notes:**

1. Dimensioning and tolerancing per ASME Y14.5M

BSC: Basic Dimension. Theoretically exact value shown without tolerances.

Microchip Technology Drawing No. C04-2057A



## APPENDIX A: REVISION HISTORY

### Revision E (April 2016)

The following is the list of modifications:

1. Removed all information regarding the discontinued CERDIP package.
2. Added [Temperature Specifications](#) Table.
3. Added [Section 5.0, Packaging Information](#).
4. Added [Product Identification System](#) page.

### Revision D (December 2012)

Added a note to each package outline drawing.

# TC4404/TC4405

---

NOTES:

## PRODUCT IDENTIFICATION SYSTEM

To order or obtain information, e.g., on pricing or delivery, refer to the factory or the listed sales office.

<u>PART NO.</u>			<u>X</u>	<u>XX</u>
Device		Temperature Range		Package
Device:	TC4404:	Dual Open-Drain MOSFET Driver		
	TC4405:	Dual Open-Drain MOSFET Driver		
Temperature Range:	C	=	0°C to +70°C	
	E	=	-40°C to +85°C	
Package:	OA	=	Plastic Small Outline (3.90 mm Body),8-Lead, SOIC	
	PA	=	Plastic Dual In-Line (300 mil Body), 8-Lead, PDIP	
	OA713	=	Plastic Small Outline (3.90 mm Body),8-Lead, SOIC	
			(Tape and Reel)	

**Examples:**

a) TC4404COA: 1.5A Dual Open-Drain MOSFET Driver, 0°C to +70°C, 8LD SOIC Package

b) TC4404EOA: 1.5A Dual Open-Drain MOSFET Driver, -40°C to +85°C, 8LD SOIC Package

c) TC4404CPA: 1.5A Dual Open-Drain MOSFET Driver, 0°C to +70°C, 8LD PDIP Package

d) TC4405EPA: 1.5A Dual Open-Drain MOSFET Driver, -40°C to +85°C, 8LD PDIP Package

e) TC4404EOA713: 1.5A Dual Open-Drain MOSFET Driver, -40°C to +85°C, 8LD SOIC Package, Tape and Reel

# TC4404/TC4405

---

NOTES:

---

**Note the following details of the code protection feature on Microchip devices:**

- Microchip products meet the specification contained in their particular Microchip Data Sheet.
- Microchip believes that its family of products is one of the most secure families of its kind on the market today, when used in the intended manner and under normal conditions.
- There are dishonest and possibly illegal methods used to breach the code protection feature. All of these methods, to our knowledge, require using the Microchip products in a manner outside the operating specifications contained in Microchip's Data Sheets. Most likely, the person doing so is engaged in theft of intellectual property.
- Microchip is willing to work with the customer who is concerned about the integrity of their code.
- Neither Microchip nor any other semiconductor manufacturer can guarantee the security of their code. Code protection does not mean that we are guaranteeing the product as "unbreakable."

Code protection is constantly evolving. We at Microchip are committed to continuously improving the code protection features of our products. Attempts to break Microchip's code protection feature may be a violation of the Digital Millennium Copyright Act. If such acts allow unauthorized access to your software or other copyrighted work, you may have a right to sue for relief under that Act.

---

Information contained in this publication regarding device applications and the like is provided only for your convenience and may be superseded by updates. It is your responsibility to ensure that your application meets with your specifications. MICROCHIP MAKES NO REPRESENTATIONS OR WARRANTIES OF ANY KIND WHETHER EXPRESS OR IMPLIED, WRITTEN OR ORAL, STATUTORY OR OTHERWISE, RELATED TO THE INFORMATION, INCLUDING BUT NOT LIMITED TO ITS CONDITION, QUALITY, PERFORMANCE, MERCHANTABILITY OR FITNESS FOR PURPOSE. Microchip disclaims all liability arising from this information and its use. Use of Microchip devices in life support and/or safety applications is entirely at the buyer's risk, and the buyer agrees to defend, indemnify and hold harmless Microchip from any and all damages, claims, suits, or expenses resulting from such use. No licenses are conveyed, implicitly or otherwise, under any Microchip intellectual property rights unless otherwise stated.

*Microchip received ISO/TS-16949:2009 certification for its worldwide headquarters, design and wafer fabrication facilities in Chandler and Tempe, Arizona; Gresham, Oregon and design centers in California and India. The Company's quality system processes and procedures are for its PIC® MCUs and dsPIC® DSCs, KEELoQ® code hopping devices, Serial EEPROMs, microperipherals, nonvolatile memory and analog products. In addition, Microchip's quality system for the design and manufacture of development systems is ISO 9001:2000 certified.*

**QUALITY MANAGEMENT SYSTEM**  
**CERTIFIED BY DNV**  
**== ISO/TS 16949 ==**

### Trademarks

The Microchip name and logo, the Microchip logo, AnyRate, dsPIC, FlashFlex, flexPWR, Heldo, JukeBlox, KeeLoq, KeeLoq logo, Klear, LANCheck, LINK MD, MediaLB, MOST, MOST logo, MPLAB, OptoLyzer, PIC, PICSTART, PIC32 logo, RightTouch, SpyNIC, SST, SST Logo, SuperFlash and UNI/O are registered trademarks of Microchip Technology Incorporated in the U.S.A. and other countries.

ClockWorks, The Embedded Control Solutions Company, ETHERSYNCH, Hyper Speed Control, HyperLight Load, IntelliMOS, mTouch, Precision Edge, and QUIET-WIRE are registered trademarks of Microchip Technology Incorporated in the U.S.A.

Analog-for-the-Digital Age, Any Capacitor, AnyIn, AnyOut, BodyCom, chipKIT, chipKIT logo, CodeGuard, dsPICDEM, dsPICDEM.net, Dynamic Average Matching, DAM, ECAN, EtherGREEN, In-Circuit Serial Programming, ICSP, Inter-Chip Connectivity, JitterBlocker, KlearNet, KlearNet logo, MiWi, motorBench, MPASM, MPF, MPLAB Certified logo, MPLIB, MPLINK, MultiTRAK, NetDetach, Omniscient Code Generation, PICDEM, PICDEM.net, PICkit, PICtail, PureSilicon, RightTouch logo, REAL ICE, Ripple Blocker, Serial Quad I/O, SQL, SuperSwitcher, SuperSwitcher II, Total Endurance, TSHARC, USBCheck, VariSense, ViewSpan, WiperLock, Wireless DNA, and ZENA are trademarks of Microchip Technology Incorporated in the U.S.A. and other countries.

SQTP is a service mark of Microchip Technology Incorporated in the U.S.A.

Silicon Storage Technology is a registered trademark of Microchip Technology Inc. in other countries.

GestIC is a registered trademarks of Microchip Technology Germany II GmbH & Co. KG, a subsidiary of Microchip Technology Inc., in other countries.

All other trademarks mentioned herein are property of their respective companies.

© 2002-2016, Microchip Technology Incorporated, Printed in the U.S.A., All Rights Reserved.

ISBN: 978-1-5224-0445-3



## Worldwide Sales and Service

### AMERICAS

#### Corporate Office

2355 West Chandler Blvd.  
Chandler, AZ 85224-6199

Tel: 480-792-7200

Fax: 480-792-7277

Technical Support:

[http://www.microchip.com/  
support](http://www.microchip.com/support)

Web Address:

[www.microchip.com](http://www.microchip.com)

#### Atlanta

Duluth, GA

Tel: 678-957-9614

Fax: 678-957-1455

#### Austin, TX

Tel: 512-257-3370

#### Boston

Westborough, MA

Tel: 774-760-0087

Fax: 774-760-0088

#### Chicago

Itasca, IL

Tel: 630-285-0071

Fax: 630-285-0075

#### Cleveland

Independence, OH

Tel: 216-447-0464

Fax: 216-447-0643

#### Dallas

Addison, TX

Tel: 972-818-7423

Fax: 972-818-2924

#### Detroit

Novi, MI

Tel: 248-848-4000

#### Houston, TX

Tel: 281-894-5983

#### Indianapolis

Noblesville, IN

Tel: 317-773-8323

Fax: 317-773-5453

#### Los Angeles

Mission Viejo, CA

Tel: 949-462-9523

Fax: 949-462-9608

#### New York, NY

Tel: 631-435-6000

#### San Jose, CA

Tel: 408-735-9110

#### Canada - Toronto

Tel: 905-673-0699

Fax: 905-673-6509

### ASIA/PACIFIC

#### Asia Pacific Office

Suites 3707-14, 37th Floor

Tower 6, The Gateway

Harbour City, Kowloon

#### Hong Kong

Tel: 852-2943-5100

Fax: 852-2401-3431

#### Australia - Sydney

Tel: 61-2-9868-6733

Fax: 61-2-9868-6755

#### China - Beijing

Tel: 86-10-8569-7000

Fax: 86-10-8528-2104

#### China - Chengdu

Tel: 86-28-8665-5511

Fax: 86-28-8665-7889

#### China - Chongqing

Tel: 86-23-8980-9588

Fax: 86-23-8980-9500

#### China - Dongguan

Tel: 86-769-8702-9880

#### China - Hangzhou

Tel: 86-571-8792-8115

Fax: 86-571-8792-8116

#### China - Hong Kong SAR

Tel: 852-2943-5100

Fax: 852-2401-3431

#### China - Nanjing

Tel: 86-25-8473-2460

Fax: 86-25-8473-2470

#### China - Qingdao

Tel: 86-532-8502-7355

Fax: 86-532-8502-7205

#### China - Shanghai

Tel: 86-21-5407-5533

Fax: 86-21-5407-5066

#### China - Shenyang

Tel: 86-24-2334-2829

Fax: 86-24-2334-2393

#### China - Shenzhen

Tel: 86-755-8864-2200

Fax: 86-755-8203-1760

#### China - Wuhan

Tel: 86-27-5980-5300

Fax: 86-27-5980-5118

#### China - Xian

Tel: 86-29-8833-7252

Fax: 86-29-8833-7256

### ASIA/PACIFIC

#### China - Xiamen

Tel: 86-592-2388138

Fax: 86-592-2388130

#### China - Zhuhai

Tel: 86-756-3210040

Fax: 86-756-3210049

#### India - Bangalore

Tel: 91-80-3090-4444

Fax: 91-80-3090-4123

#### India - New Delhi

Tel: 91-11-4160-8631

Fax: 91-11-4160-8632

#### India - Pune

Tel: 91-20-3019-1500

#### Japan - Osaka

Tel: 81-6-6152-7160

Fax: 81-6-6152-9310

#### Japan - Tokyo

Tel: 81-3-6880-3770

Fax: 81-3-6880-3771

#### Korea - Daegu

Tel: 82-53-744-4301

Fax: 82-53-744-4302

#### Korea - Seoul

Tel: 82-2-554-7200

Fax: 82-2-558-5932 or

82-2-558-5934

#### Malaysia - Kuala Lumpur

Tel: 60-3-6201-9857

Fax: 60-3-6201-9859

#### Malaysia - Penang

Tel: 60-4-227-8870

Fax: 60-4-227-4068

#### Philippines - Manila

Tel: 63-2-634-9065

Fax: 63-2-634-9069

#### Singapore

Tel: 65-6334-8870

Fax: 65-6334-8850

#### Taiwan - Hsin Chu

Tel: 886-3-5778-366

Fax: 886-3-5770-955

#### Taiwan - Kaohsiung

Tel: 886-7-213-7828

#### Taiwan - Taipei

Tel: 886-2-2508-8600

Fax: 886-2-2508-0102

#### Thailand - Bangkok

Tel: 66-2-694-1351

Fax: 66-2-694-1350

### EUROPE

#### Austria - Wels

Tel: 43-7242-2244-39

Fax: 43-7242-2244-393

#### Denmark - Copenhagen

Tel: 45-4450-2828

Fax: 45-4485-2829

#### France - Paris

Tel: 33-1-69-53-63-20

Fax: 33-1-69-30-90-79

#### Germany - Dusseldorf

Tel: 49-2129-3766400

#### Germany - Karlsruhe

Tel: 49-721-625370

#### Germany - Munich

Tel: 49-89-627-144-0

Fax: 49-89-627-144-44

#### Italy - Milan

Tel: 39-0331-742611

Fax: 39-0331-466781

#### Italy - Venice

Tel: 39-049-7625286

#### Netherlands - Drunen

Tel: 31-416-690399

Fax: 31-416-690340

#### Poland - Warsaw

Tel: 48-22-3325737

#### Spain - Madrid

Tel: 34-91-708-08-90

Fax: 34-91-708-08-91

#### Sweden - Stockholm

Tel: 46-8-5090-4654

#### UK - Wokingham

Tel: 44-118-921-5800

Fax: 44-118-921-5820

07/14/15

# Mouser Electronics

Authorized Distributor

Click to View Pricing, Inventory, Delivery & Lifecycle Information:

[Microchip:](#)

[TC4404EOA](#) [TC4404EPA](#) [TC4405CPA](#) [TC4405COA](#) [TC4405EOA713](#) [TC4404EOA713](#) [TC4405COA713](#)  
[TC4404COA713](#) [TC4405EPA](#) [TC4405EOA](#) [TC4404COA](#) [TC4404CPA](#)