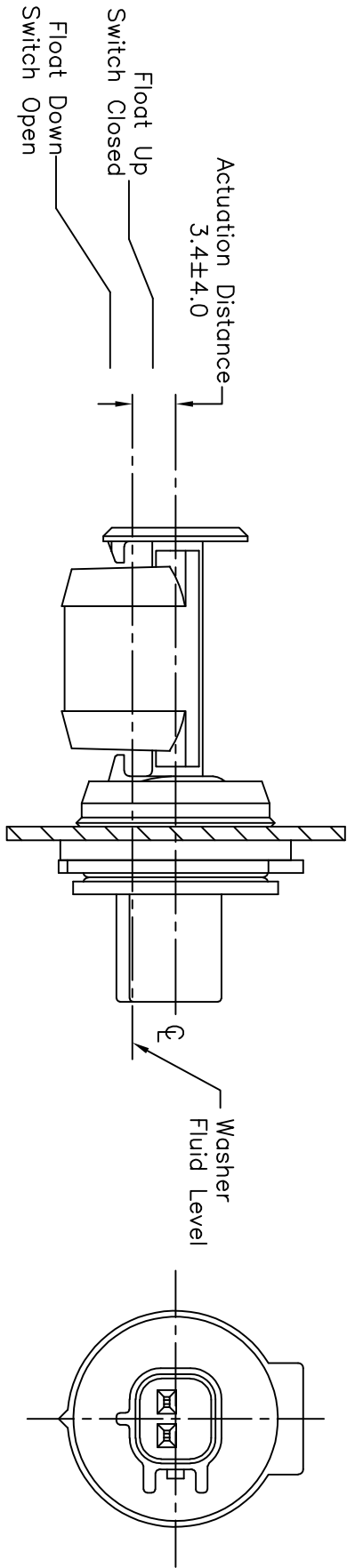
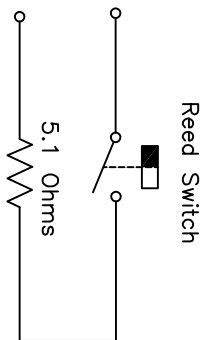
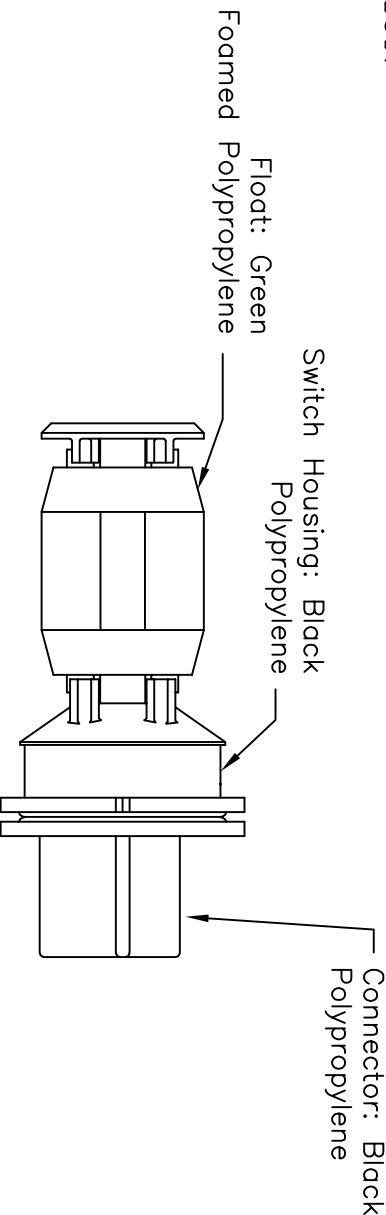


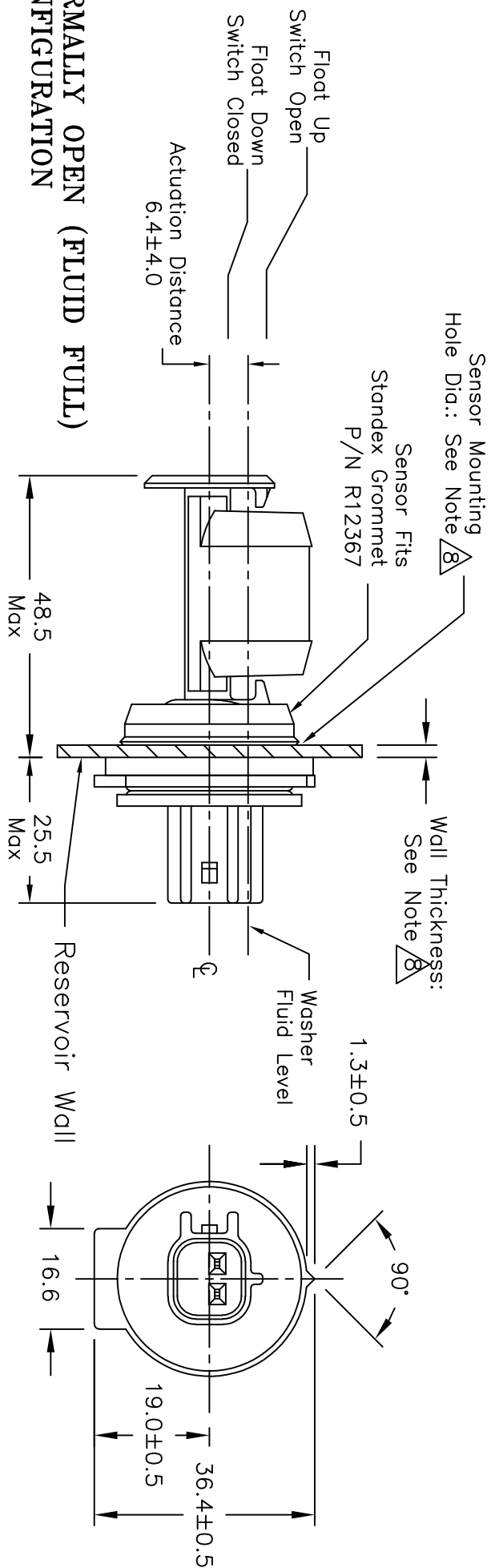
REF. STANDEX P/N R12456



NORMALLY CLOSED (FLUID FULL) CONFIGURATION



SENSOR SCHEMATIC



NORMALLY OPEN (FLUID FULL) CONFIGURATION

- THE GROMMET SEAL SHALL WITHSTAND AN INSIDE THE RESERVOIR PRESSURE OF 0.2 KGf/CM FOR 60 SECONDS WITHOUT LEAKING.
- THE SENSOR MUST MATE WITH YAZAKI CONNECTOR P/N 7283-6434-40.

THE FOLLOWING TABLE IS THE REQUIREMENT FOR THE SENSOR MOUNTING HOLE DIAMETER AND RESERVOIR WALL THICKNESS RELATIONSHIP:

WALL THICKNESS	REQ'D SENSOR HOLE DIA.
2.3 / 2.7 mm	28.8 +0/-0.5
1.9 / 2.4 mm	28.5 +0/-0.5

ALL DIMENSIONS IN MILLIMETERS

This drawing and the information and technical data contained hereon, are confidential and proprietary to **Standex Electronics** and shall not be used in whole or in part without **Standex** written consent

REVISIONS				TOLERANCES When Unspecified				TITLE			
1	Initial Release 10/19/00 AMF	2	Added Color Notes 10/8/01 AMF	3	Black was Light Grey 2/23/11 DCJ	4	Natural was Green 5/23/12 DCJ	5	Added Normally Closed Configuration; Green was Natural 2/8/13 DCJ	6	Added Sensor Schematic 10/2/15 DCJ
7	3.4 was 6.4 for Normally Closed Config 9/6/19 DCJ					Inches	Dec. ± .XX	1 Place	Dec. ± .3	STANDEX ELECTRONICS	
						Millimeters	Dec. ± .15	2 Place	Dec. ± .15	a Standex company	
						Fractions	± X/X	Angles	± X°	CINCINNATI OHIO	
						Scale :	1:1	Dwn.	AMF	DATE	DRAWING NUMBER
						App'd.		10/19/00		SD R12456	REV.
										7	

Mouser Electronics

Authorized Distributor

Click to View Pricing, Inventory, Delivery & Lifecycle Information:

[Standex Electronics:](#)

[R12456](#)