

**New!**



- ❑ Activated by the touch of a finger  
Even with surgeon gloves
- ❑ 50 million cycles
- ❑ Auto-calibration function
- ❑ Bushing diameter 16, 19 or 22 mm
- ❑ Momentary or latching

### ENVIRONMENTAL SPECIFICATIONS

- Sealing : IP68 and IP69K according to IEC 60529
- Triggered by flowing water
- Impact resistance : IK10
- Operating temperature : -20°C to +65°C
- ESD : complies with EN61000-4-2 (extended)  $\pm 8\text{KV}$  (20 contacts) and  $\pm 15\text{KV}$  (20 air discharges)

### MATERIALS

- Case : aluminium, anodized
- Multi-wire leads section 0,22 mm<sup>2</sup> length 300 mm
- Cable, length 300 mm, section depending on switch model
- Connector : HE14 6V compatible with AMP/TYCO281839-3

### ELECTRICAL AND GENERAL SPECIFICATIONS

- Max. current/voltage rating : 200mA 24VDC
- Supply voltage : 5 to 24VDC
- Life expectancy : 50 million cycles
- Power consumption non-illuminated : 7mA
- Power consumption illuminated : 25mA
- Operating force : 0N
- LED state for output image option :
  - 1 LED : the LED is ON when the output is closed.
  - 2 LEDs : first colour is ON when the output is open. Second colour is ON when the output is closed.
- Output type : NPN

### ADJUSTABLE SENSITIVITY

Connection to ground by means of the yellow wire increases sensitivity (momentary version only).



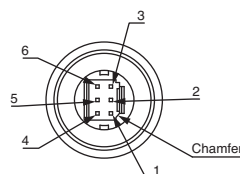
This switch should not be used in safety applications.

### Wiring diagrams

	Non-illuminated	1 LED		2 LEDs		Legend
		Output indicator	Independent	Output indicator	Independent	
OFF-ON						R red +V Black black GND W white output Y yellow sensitivity G green -LED 1 Blue blue -LED2  Wire colours may vary. Always refer to the label on the switch.
OFF-MOM						

### Wiring for switch connector

- Pin 1 : GND
- Pin 2 : output
- Pin 3 : +V
- Pin 4 : LED 2
- Pin 5 : sensitivity
- Pin 6 : LED 1

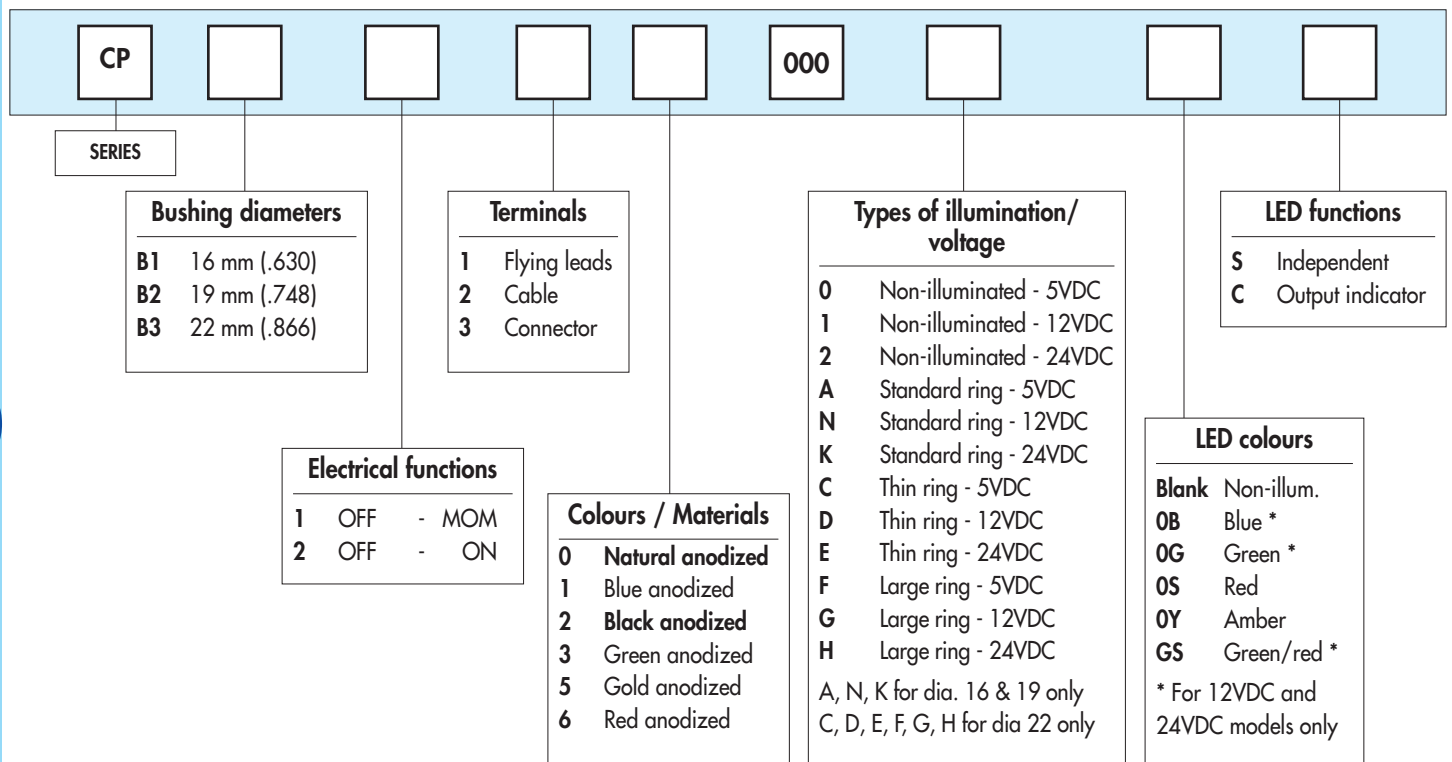


# CP series

## Capacitive switches

**New!**

### Overview



### On request

- Duration of activation 15 minutes for latching models (standard duration is infinite)
- Different lengths, gauges or colours for flying lead terminals
- Different cable lengths

**Dimensions** : first dimensions are in mm while inches are shown as bracketed numbers.

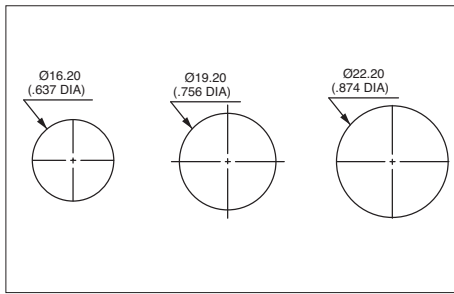


NOTICE : please note that not all combinations of above numbers are available. Refer to the following pages for further information.



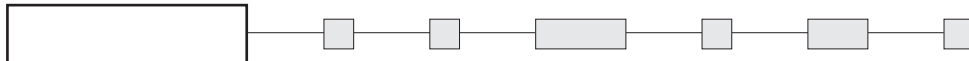
**Packaging unit** : 20 pieces

**New!**



Shown with flying lead terminals

**MODEL  
STRUCTURE**



B2

### Bushing Ø 16 mm (.630) - standard ring



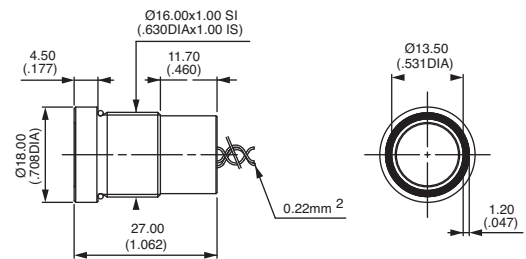
CPB1110000NGSC

Momentary  
CPB11

OFF - MOM

Latching  
CPB12

OFF - ON



### Bushing Ø 19 mm (.748) - standard ring



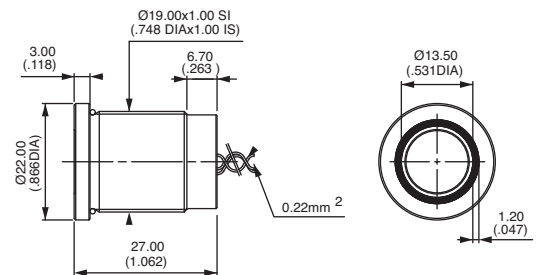
CPB2110000NGSC

Momentary  
CPB21

OFF - MOM

Latching  
CPB22

OFF - ON



### Bushing Ø 22 mm (.866) - large or thin ring



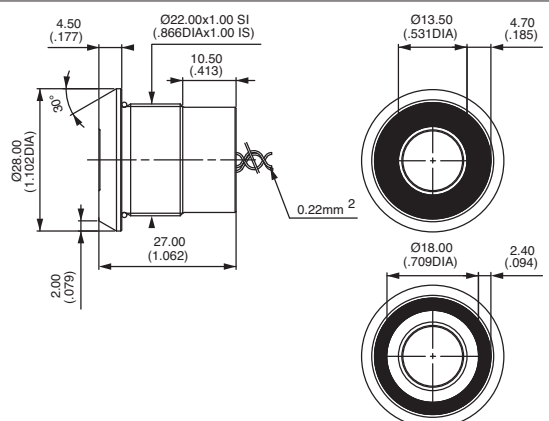
CPB3210000GGSC

Momentary  
CPB31

OFF - MOM

Latching  
CPB32

OFF - ON



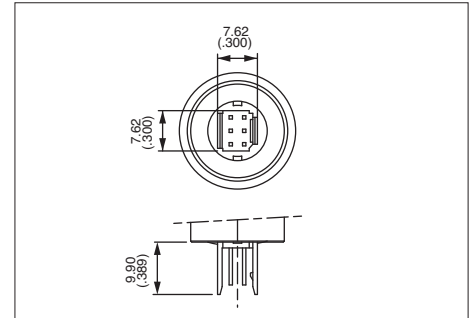
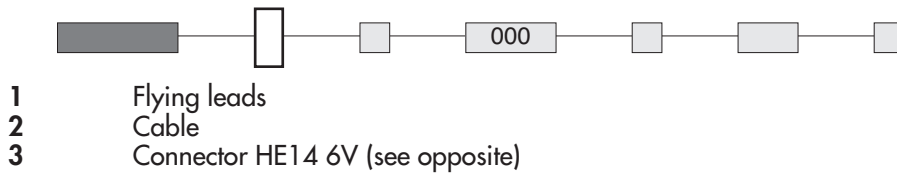
# CP series

## Capacitive switches

### Options

**New!**

#### TERMINALS



#### CASE COLOURS / MATERIALS



Code	Colour
0	Natural anodized aluminium
1	Blue anodized aluminium
2	Black anodised aluminium

Code	Colour
3	Green anodized aluminium
5	Gold anodized aluminium
6	Red anodised aluminium

#### TYPES OF ILLUMINATION



	5VDC	12VDC	24VDC
Non-illuminated	0	1	2
Standard ring (Ø 16 & 19 only)	A	N	K
Thin ring (Ø 22 only)	C	D	E
Large ring (Ø 22 only)	F	G	H

#### LED COLOURS



**Blank** Non-illuminated

**OB** : blue - **OG** : green - **OS** : red - **OY** : amber - **GS** : green/red



Blue, green and green/red LEDs available on 12VDC and 24VDC models only.

#### LED FUNCTIONS



**S** Independent  
**C** Output indicator

# Mouser Electronics

Authorized Distributor

Click to View Pricing, Inventory, Delivery & Lifecycle Information:

[Apem:](#)

[CPB31200002](#) [CPB1110000KGSS](#) [CPB2110000N0BS](#) [CPB1210000NGSC](#) [CPB3122000H0SC](#) [CPB31100000](#)  
[CPB3110000C0SS](#)