

G Series

Instrument Grade Miniature Slide Switches

SPECIFICATIONS

Contact ratings:

Gold; 0.4 Volt-Amps (VA) max. at 20 V max. (AC or DC)

Silver; 4 A at 125 VAC, 2 A at 250 VAC or 3 A at 30 VDC

Initial contact resistance: 10 milliohms max.

Insulation resistance: 1000 megohms min.

Dielectric strength: 1000 V rms min.

Electrical life w/resistive load: Gold; 60,000 cycles min.

Silver; 2 pos. - 40,000 cycles, 3 pos. - 20,000 cycles

Operating temperature range: -30°C to +85°C

Solder heat resistance: 300°C max. for 5 seconds

Washing not recommended

FEATURES

- Epoxy sealed terminals.
- Break-before-make contact action.
- SPDT and DPDT models with long electrical life.
- Many additional models & options available (see page G35).

MATERIALS

Contacts & terminals: Gold or silver available (see contact ratings)

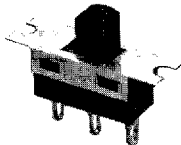
Cover: Stainless steel

Actuator: Glass filled polyamide

Case: PES high temp. thermoplastic **Terminal seal:** Epoxy

SPECIFICATIONS SUBJECT TO CHANGE WITHOUT NOTICE

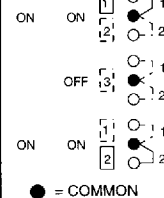
MODEL NO.	PLATING	ACTION
GH36S000001	Gold	on - on
GH39S000001	Gold	on off on
GH36S010001	Silver	on - on
GH39S010001	Silver	on off on



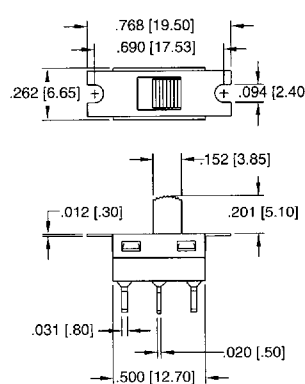
SPDT

FUNCTION
(see pg. G35).

6 9

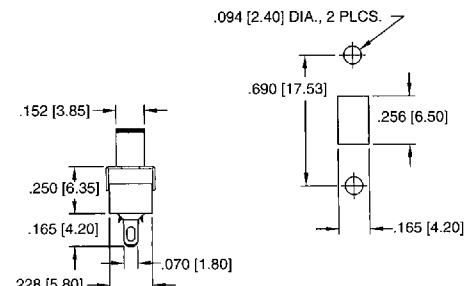


SCHEMATIC



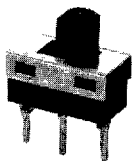
MECHANICAL OUTLINE

.086 (2.20) TRAVEL/THROW



PANEL CUTOUT

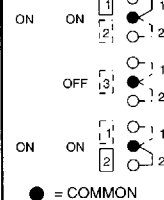
MODEL NO.	PLATING	ACTION
GH36P000001	Gold	on - on
GH39P000001	Gold	on off on
GH36P010001	Silver	on - on
GH39P010001	Silver	on off on



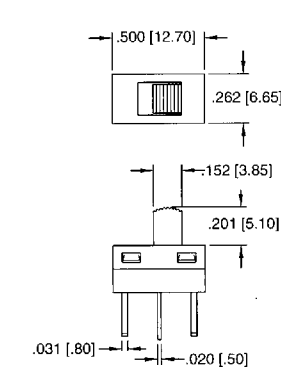
SPDT

FUNCTION
(see pg. G35).

6 9

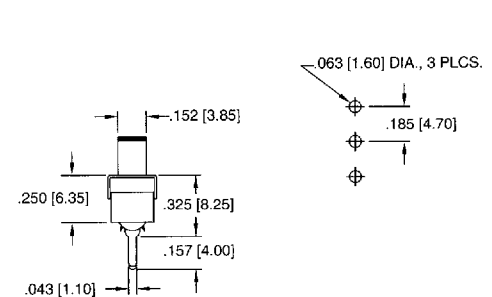


SCHEMATIC



MECHANICAL OUTLINE

.086 (2.20) TRAVEL/THROW



P.C. BOARD LAYOUT

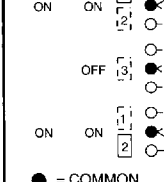
MODEL NO.	PLATING	ACTION
GH36W000001	Gold	on - on
GH39W000001	Gold	on off on
GH36W010001	Silver	on - on
GH39W010001	Silver	on off on



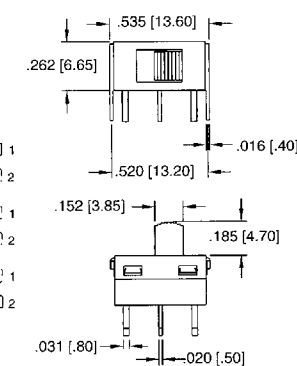
SPDT

FUNCTION
(see pg. G35).

6 9

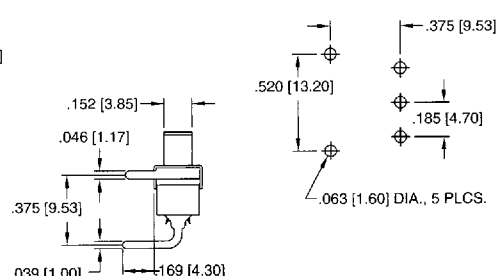


SCHEMATIC



MECHANICAL OUTLINE

.086 (2.20) TRAVEL/THROW



P.C. BOARD LAYOUT

G Series

Instrument Grade Miniature Slide Switches

MODEL NO.	PLATING	ACTION	SPDT		
GH36WW00001	Gold	on - on	<p>FUNCTION (see pg. G35)</p> <p>6 9</p> <p>ON ON </p> <p>OFF </p> <p>ON ON </p> <p>● = COMMON</p>	<p>.500 [12.70]</p> <p>.046 [1.17]</p> <p>.262 [6.65]</p> <p>.110 [2.80]</p> <p>.152 [3.85]</p> <p>.185 [4.70]</p> <p>.016 [40]</p> <p>.031 [80]</p> <p>.086 (2.20) TRAVEL/THROW</p>	<p>.063 [1.60] DIA., 5 PLCS.</p> <p>.150 [3.81] TYP</p> <p>.400 [10.16]</p> <p>.175 [4.45]</p>
GH39WW00001	Gold	on off on			
GH36WW10001	Silver	on - on			
GH39WW10001	Silver	on off on			
			SCHEMATIC	MECHANICAL OUTLINE	P.C. BOARD LAYOUT
MODEL NO.	PLATING	ACTION	SPDT		
GH36Y000001	Gold	on - on	<p>FUNCTION (see pg. G35)</p> <p>6 9</p> <p>ON ON </p> <p>OFF </p> <p>ON ON </p> <p>● = COMMON</p>	<p>.638 [16.20]</p> <p>.295 [7.50]</p> <p>.152 [3.85]</p> <p>.185 [4.70]</p> <p>.020 [50]</p> <p>.031 [80]</p> <p>.016 [40]</p> <p>.046 [1.17]</p> <p>.086 (2.20) TRAVEL/THROW</p>	<p>.125 [3.18]</p> <p>.620 [15.75]</p> <p>.185 [4.70]</p> <p>.063 [1.60] DIA., 7 PLCS.</p>
GH39Y000001	Gold	on off on			
GH36Y010001	Silver	on - on			
GH39Y010001	Silver	on off on			
			SCHEMATIC	MECHANICAL OUTLINE	P.C. BOARD LAYOUT
MODEL NO.	PLATING	ACTION	SPDT		
GH36Y400001	Gold	on - on	<p>FUNCTION (see pg. G35)</p> <p>6 9</p> <p>ON ON </p> <p>OFF </p> <p>ON ON </p> <p>● = COMMON</p>	<p>.638 [16.20]</p> <p>.295 [7.50]</p> <p>.152 [3.85]</p> <p>.185 [4.70]</p> <p>.020 [50]</p> <p>.031 [80]</p> <p>.016 [40]</p> <p>.046 [1.17]</p> <p>.086 (2.20) TRAVEL/THROW</p>	<p>.128 [3.18]</p> <p>.620 [15.75]</p> <p>.185 [4.70] 2 PLCS.</p> <p>.063 [1.60] DIA., 7 PLCS.</p>
GH39Y400001	Gold	on off on			
GH36Y410001	Silver	on - on			
GH39Y410001	Silver	on off on			
			SCHEMATIC	MECHANICAL OUTLINE	P.C. BOARD LAYOUT
ACTUATOR POSITION AND CONNECTIONS (FOR BOTH SP & DP MODELS)					
<p>Function 6</p> <p>Function 9</p>			SOLDER LUG TERMINAL <p>.165 [4.20]</p> <p>.074 [1.90]</p> <p>.043 [1.10]</p> <p>.070 [1.80]</p>		
<p>NONE</p> <p>OFF</p>			P.C. TERMINAL <p>.232 [5.90]</p> <p>.157 [4.00]</p> <p>.043 [1.10]</p>		
<p>ON</p> <p>ON</p>					

SPECIFICATIONS SUBJECT TO CHANGE WITHOUT NOTICE

D 96E ■ 6346802 0001468 786 ■

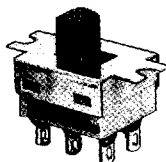
G Series

Instrument Grade

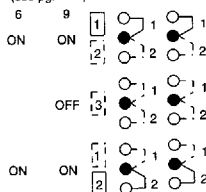
Miniature Slide Switches

SPECIFICATIONS SUBJECT TO CHANGE WITHOUT NOTICE

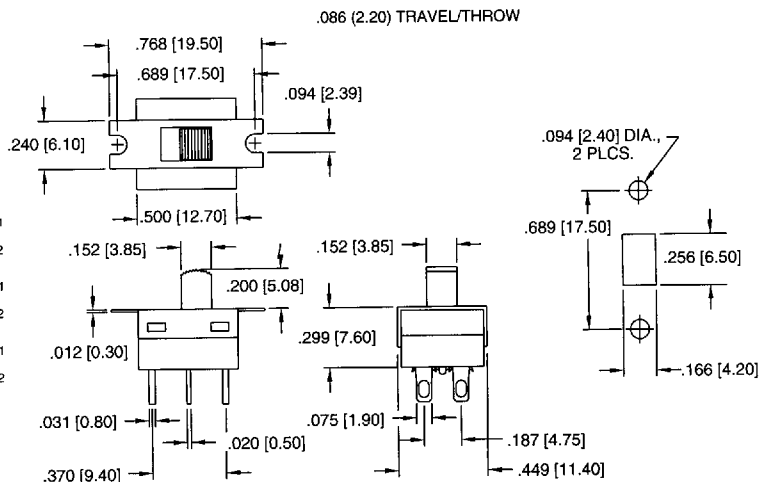
MODEL NO.	PLATING	ACTION
GH46S000001	Gold	on - on
GH49S000001	Gold	on off on
GH46S010001	Silver	on - on
GH49S010001	Silver	on off on

New!

DPDT

FUNCTION
(see pg. G35)

● = COMMON

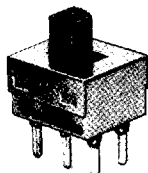
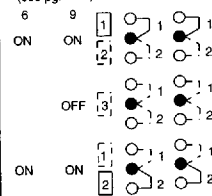


SCHEMATIC

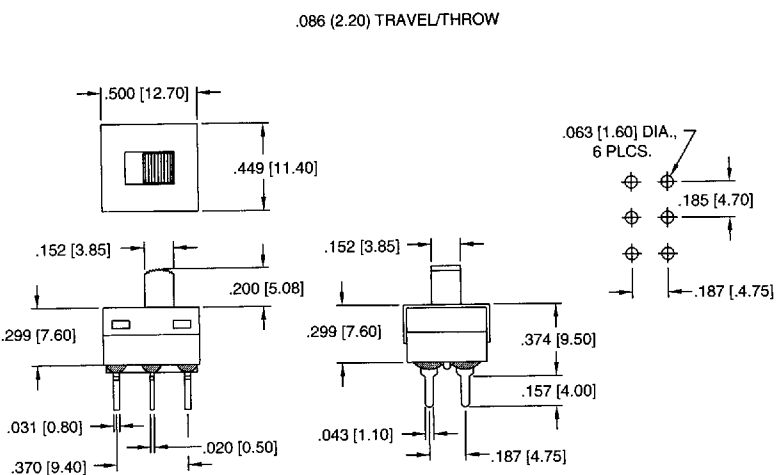
MECHANICAL OUTLINE

P.C. BOARD LAYOUT

MODEL NO.	PLATING	ACTION
GH46P000001	Gold	on - on
GH49P000001	Gold	on off on
GH46P010001	Silver	on - on
GH49P010001	Silver	on off on

New!FUNCTION
(see pg. G35)

● = COMMON

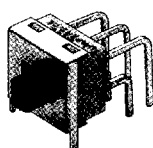


SCHEMATIC

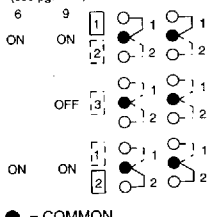
MECHANICAL OUTLINE

P.C. BOARD LAYOUT

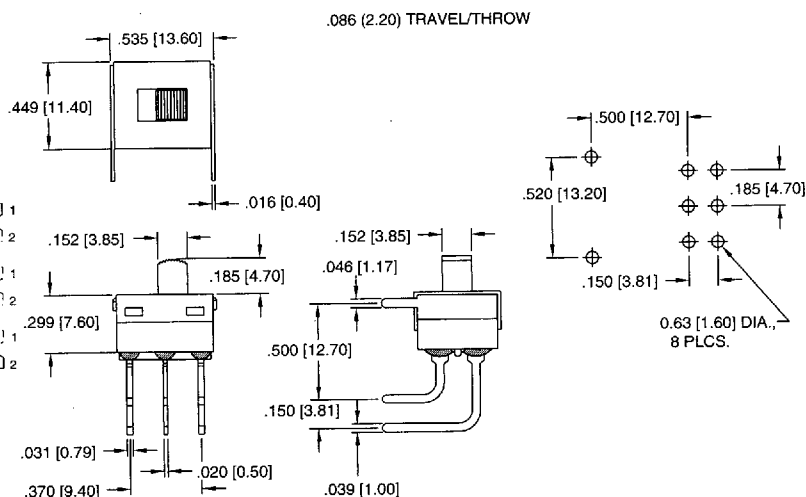
MODEL NO.	PLATING	ACTION
GH46W000001	Gold	on - on
GH49W000001	Gold	on off on
GH46W010001	Silver	on - on
GH49W010001	Silver	on off on

New!

DPDT

FUNCTION
(see pg. G35)

● = COMMON



SCHEMATIC

MECHANICAL OUTLINE

P.C. BOARD LAYOUT

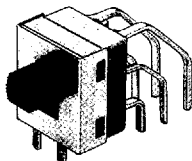
G Series

Instrument Grade

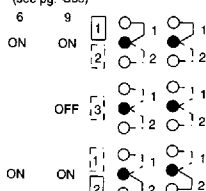
Miniature Slide Switches

MODEL NO. PLATING ACTION

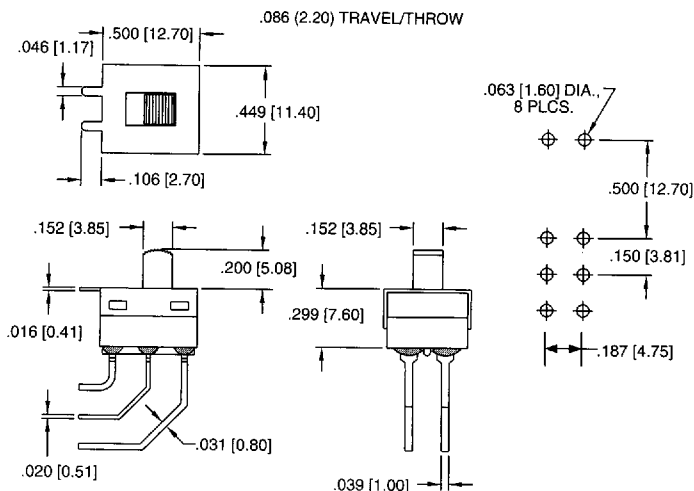
GH46WW00001	Gold	on - on
GH49WW00001	Gold	on off on
GH46WW10001	Silver	on - on
GH49WW10001	Silver	on off on

New!

DPDT

FUNCTION
(see pg. G35)

● = COMMON



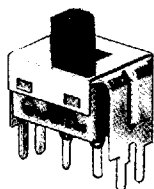
SCHEMATIC

MECHANICAL OUTLINE

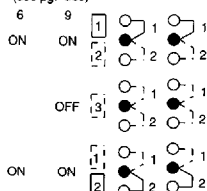
P.C. BOARD LAYOUT

MODEL NO. PLATING ACTION

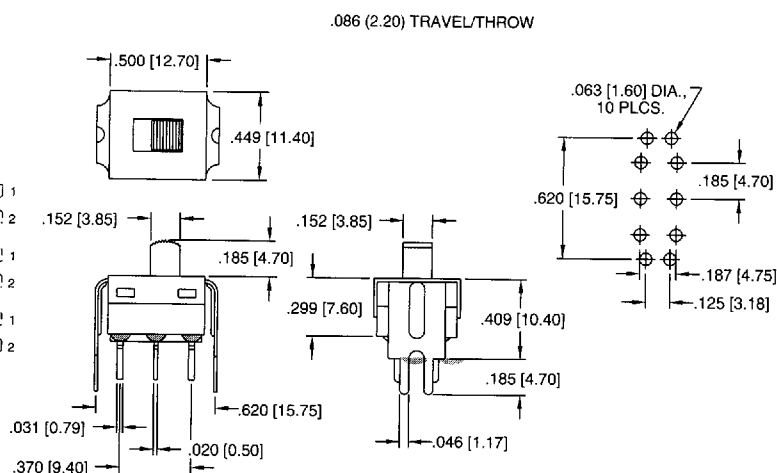
GH46Y000001	Gold	on - on
GH49Y000001	Gold	on off on
GH46Y010001	Silver	on - on
GH49Y010001	Silver	on off on

New!

DPDT

FUNCTION
(see pg. G35)

● = COMMON



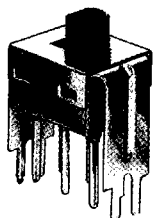
SCHEMATIC

MECHANICAL OUTLINE

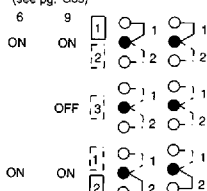
P.C. BOARD LAYOUT

MODEL NO. PLATING ACTION

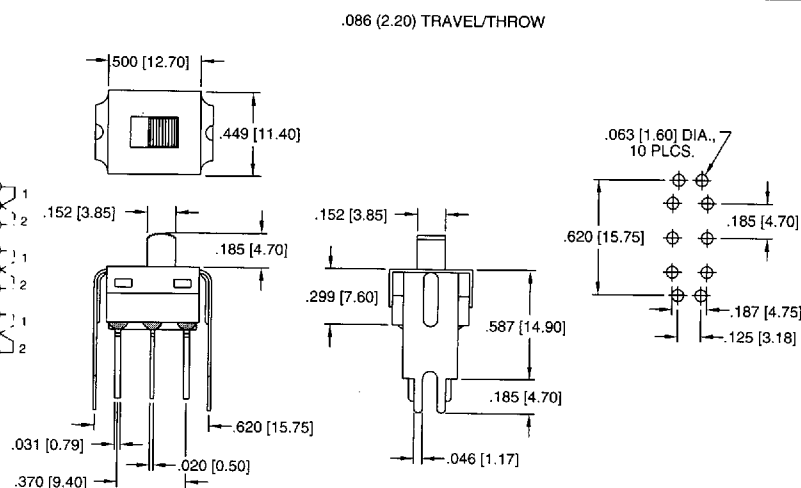
GH46Y400001	Gold	on - on
GH49Y400001	Gold	on off on
GH46Y410001	Silver	on - on
GH49Y410001	Silver	on off on

New!

DPDT

FUNCTION
(see pg. G35)

● = COMMON



SCHEMATIC

MECHANICAL OUTLINE

P.C. BOARD LAYOUT

SPECIFICATIONS SUBJECT TO CHANGE WITHOUT NOTICE

Mouser Electronics

Authorized Distributor

Click to View Pricing, Inventory, Delivery & Lifecycle Information:

[Apem:](#)

[GH36Y000001](#) [GH49W000001](#)