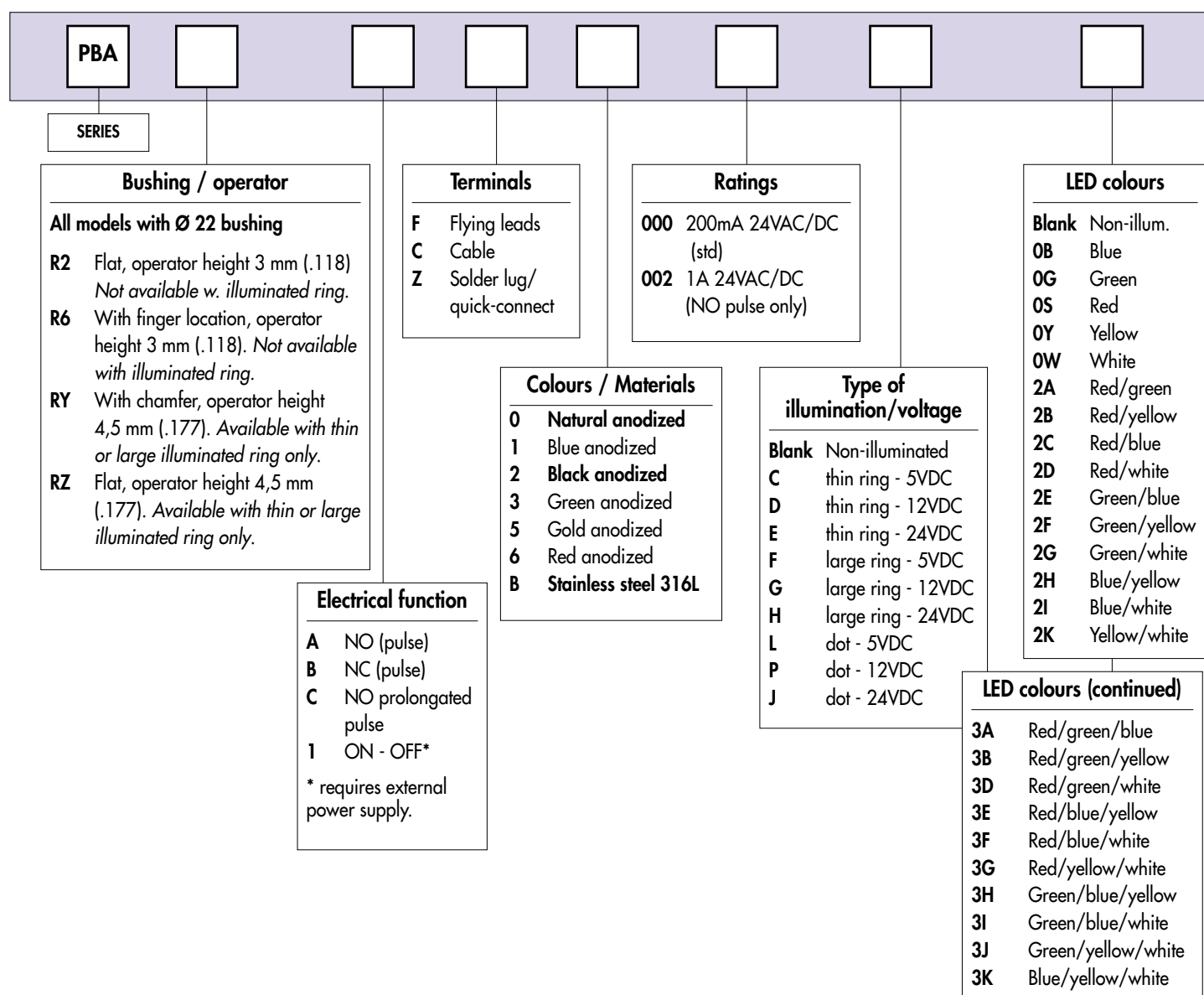


# PBA series

Piezo switches Ø 22 (.866)

## Overview



For options not listed above, please refer to our "Custom configurations" pages.



**NOTICE** : please note that not all combinations of above numbers are available. Refer to the following pages for further information.



**Mounting accessories** : standard hardware supplied : 1 hex nut U6440 (25 mm ac. flats) and 1 O-ring

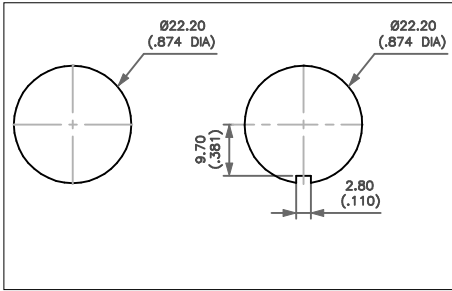


**Packaging unit** : 20 pieces

# PBA series

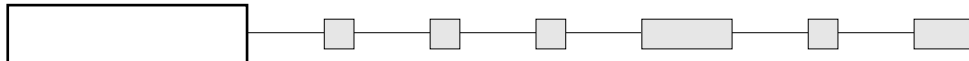
Piezo switches Ø 22 (.866)

*Illuminated and non-illuminated*



- Operator Ø 28 mm (1.102)

**MODEL  
STRUCTURE**



Wire colours : see "Electrical functions" page.

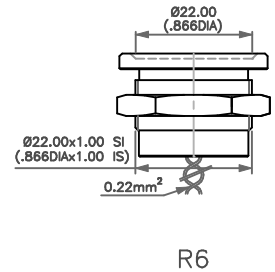
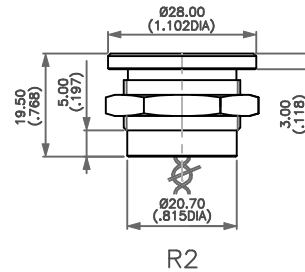
## Non-illuminated - operator height 3 mm (.118)



Flat  
**PBAR2**

With finger location  
**PBAR6**

**PBAR2AF6000**



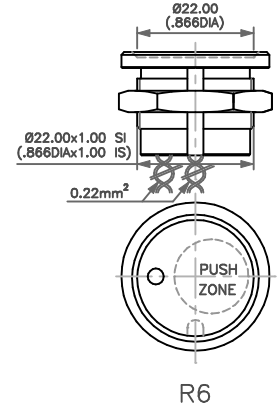
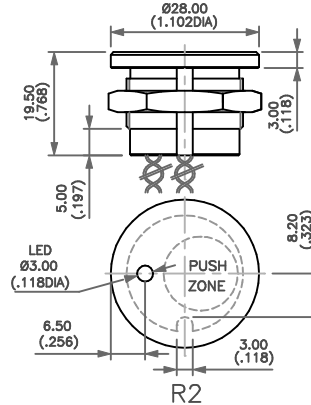
## With illuminated dot - operator height 3 mm (.118)



Flat  
**PBAR2**

With finger location  
**PBAR6**

**PBAR6AF6000LOG**



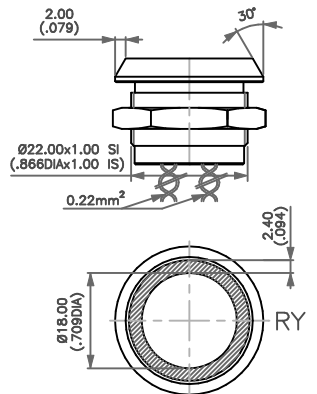
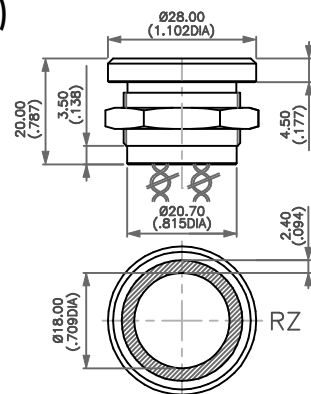
## With thin illuminated ring - operator height 4,50 (.177)



Flat  
**PBARZ**

With chamfer  
**PBARY**

**PBARYAF0000COB**



# PBA series

## Piezo switches

*Illuminated and non-illuminated*

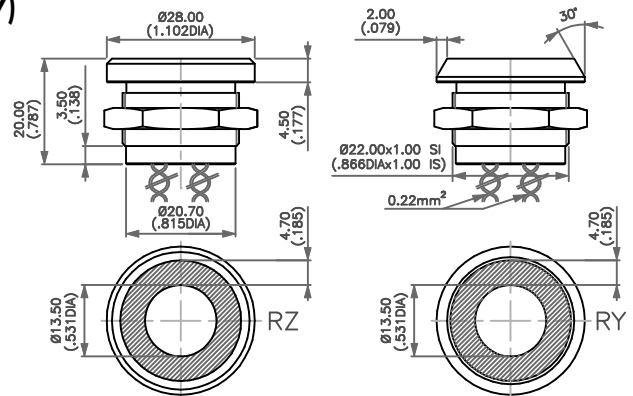
**With large illuminated ring - operator height 4,50 (.177)**



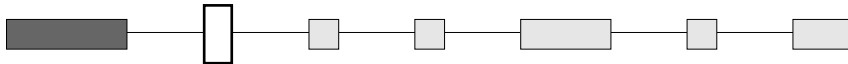
PBARYAF0000FOB

Flat  
**PBARZ**

With chamfer  
**PBARY**

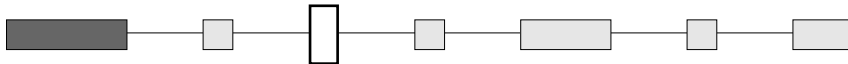


### ELECTRICAL FUNCTION

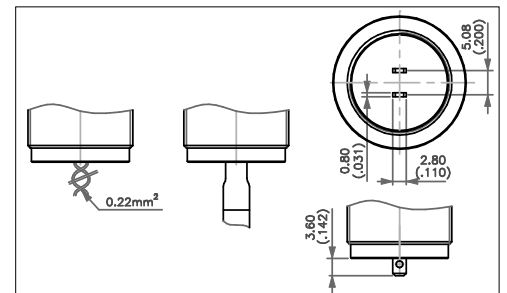


- A NO pulse
- B NC pulse
- C NO prolonged pulse
- 1 ON - OFF - Requires external power supply

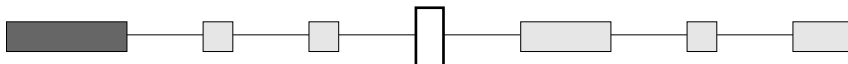
### TERMINALS



- F Flying leads
- C Cable
- Z Solder lug / quick-connect



### CASE COLOURS / MATERIALS



Code	Colour
0	Natural anodized aluminium
1	Blue anodized aluminium
2	Black anodised aluminium

Code	Colour
3	Green anodized aluminium
5	Gold anodized aluminium
6	Red anodised aluminium

Code	Colour
B	Stainless steel 316L



0

1

2

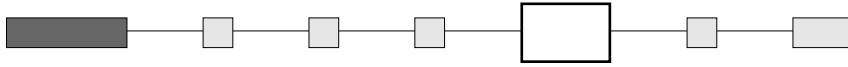
3

5

6

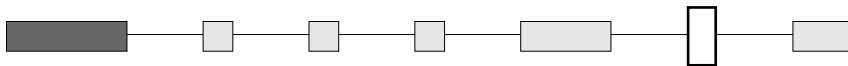
B

### RATINGS



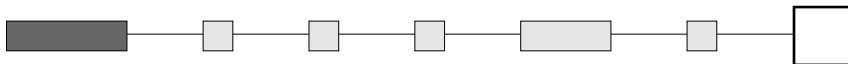
**000** 200mA 24VAC or DC (standard)  
**002** 1A 24VAC or DC (NO pulse only)

### TYPE OF ILLUMINATION / VOLTAGE



	5V	12V	24V
	<b>C</b>	<b>D</b>	<b>E</b>
	<b>F</b>	<b>G</b>	<b>H</b>
	<b>L</b>	<b>P</b>	<b>J</b>

### LED COLOURS



Integrated LED resistor

**Blank** : non-illuminated



**OB**

**OG**

**OS**

**OY**

**OW**

#### Illuminated 1 LED \*

**OB** : blue - **OG** : green - **OS** : red - **OY** : yellow - **OW** : white

#### Illuminated 2 LEDs

**2A** : red/green - **2B** : red/yellow - **2C** : red/blue - **2D** : red/white - **2E** : green/blue - **2F** : green/yellow - **2G** : green/white  
**2H** : blue/yellow - **2I** : blue/white - **2K** : yellow/white

#### Illuminated 3 LEDs

**3A** : red/green/blue - **3B** : red/green/yellow - **3D** : red/green/white - **3E** : red/blue/yellow - **3F** : red/blue/white  
**3G** : red/yellow/white - **3H** : green/blue/yellow - **3I** : green/blue/white - **3J** : green/yellow/white - **3K** : blue/yellow/white

\* LED colour is indicated by the bottom of the product.

# Mouser Electronics

Authorized Distributor

Click to View Pricing, Inventory, Delivery & Lifecycle Information:

[Apem:](#)

[PBAR6AF2000](#)