

# ZP series

## Tiny pushbutton switches - metal bushing

Distinctive features - Specifications - Overview

UG1410A



☐ Ø 4,83 mm threaded bushing

☐ Solder lug and straight PC terminals

### ELECTRICAL SPECIFICATIONS

- Max. current/voltage rating with resistive load :
  - gold plated contacts : 0,4VA 20V max. AC or DC
  - silver plated contacts : 0,5A 48V max. AC or DC
- Minimum load : 10mA 50mV - 10µA 5VDC
- Contact resistance : 50 mΩ max.
- Insulation resistance : 1.000 MΩ min. at 500VDC
- Dielectric strength: 1.000 Vrms 50 Hz min. between terminals and frame  
500 Vrms 50 Hz min. between terminals
- Electrical life at full load :
  - gold plated contacts : 60.000 cycles
  - silver plated contacts: 20.000 cycles

### MATERIALS

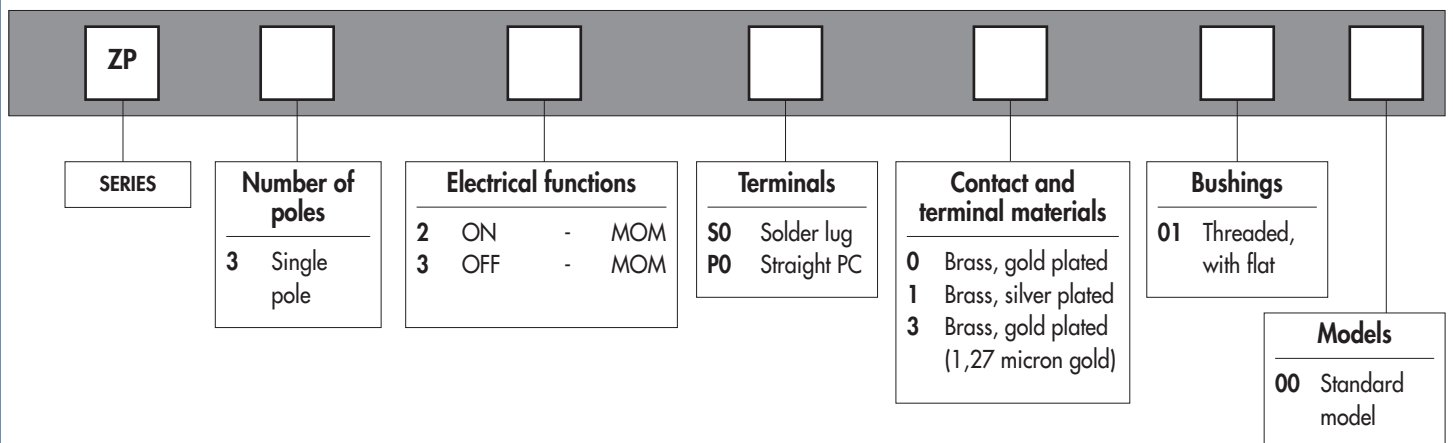
- Case : thermoplastic UL94-V0
- Actuator : thermoplastic UL94-V0
- Bushing : zamac, tin plated
- Contacts and terminals :
  - 0** : brass, gold plated (standard)
  - 1** : brass, silver plated
  - 3** : brass, gold plated (1,27 micron gold)
- Terminal seal : epoxy

### GENERAL SPECIFICATIONS

- Travel :
  - function 2 (ON-MOM) : 1,2 mm (.047) ± 0,3 (.11)
  - function 3 (OFF-MOM) : 1 mm (.039) ± 0,3 (.11)
- Strength of terminals : pull-out force 10N max.
- Torque : 1Nm max. applied between the 2 nuts
- Max. panel thickness : 1,5 mm (.059) with 2 nuts
- Operating temperature : -30°C to +85°C
- Moisture : 21 days 95 % (NFC 20-603 - IEC 68-2-3)

### SOLDERING

- Hand soldering : 280°C max. for 5 seconds max.
- Wave soldering : 260°C max. for 5 seconds max.



**Dimensions** : First dimensions are in mm while inches are shown as bracketed numbers.



**Packaging unit** : 100 pieces

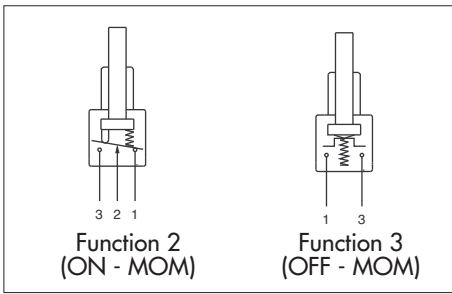


**Mounting accessories** : Standard hardware supplied with all models : 2 hex nuts 7 mm (.275) across flats P/N U5731, 1 locking ring P/N U5831 and 1 lockwasher P/N U5841.

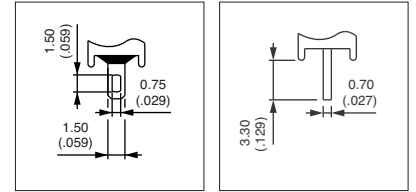
The company reserves the right to change specifications without notice.

# ZP series

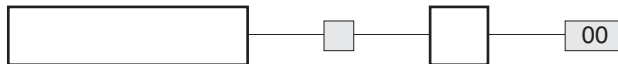
## Tiny pushbutton switches - metal bushing



- Single pole
- Gold plated or silver plated contacts
- Epoxy sealed terminals



### MODEL STRUCTURE



Shown in function 2 (ON-MOM)

B2

### Solder lug terminals : ZP..S0

→ Flat



ZP32S0



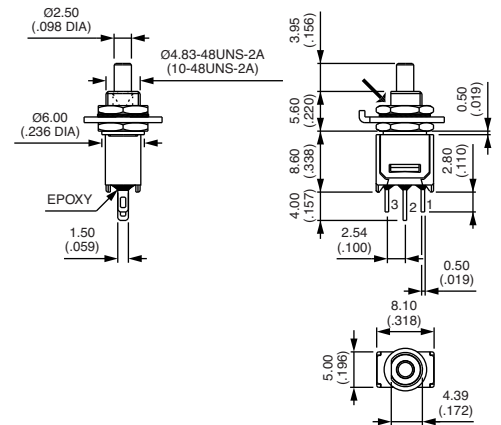
ON

MOM

ZP33S0

OFF

MOM



### Straight PC terminals : ZP..P0

→ Flat



ZP32P0



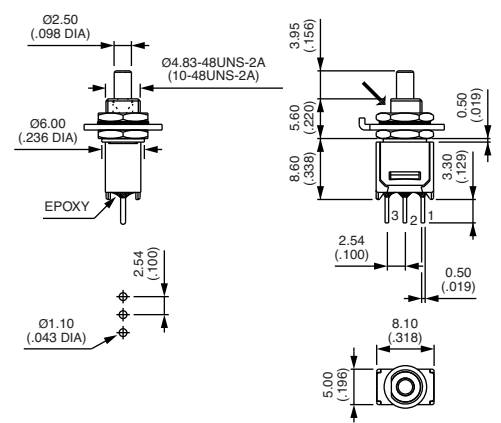
ON

MOM

ZP33P0

OFF

MOM

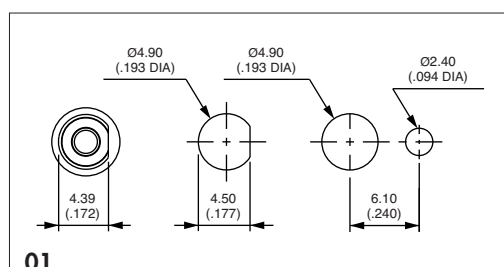
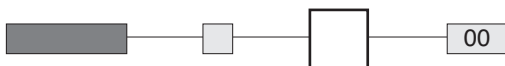


### CONTACT & TERMINAL MATERIALS



0 : Brass, gold plated (standard) - 1 : Brass, silver plated  
3 : Brass, gold plated (1,27µ gold)

### BUSHING



01

# Mouser Electronics

Authorized Distributor

Click to View Pricing, Inventory, Delivery & Lifecycle Information:

[Apem:](#)

[ZP32S010100](#)