

### HOW TO ORDER

K T S C 2

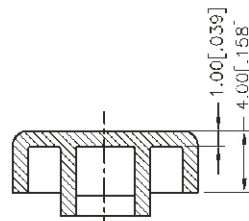
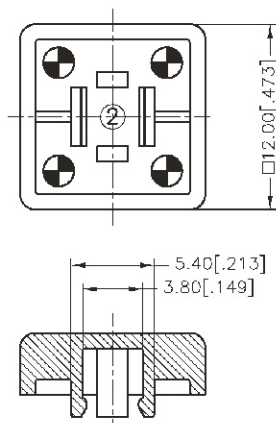
Prod. Size : <Tactile Switch>  
2 = 12X12 mm

Cap Type :  
1 = Square  
2 = Round

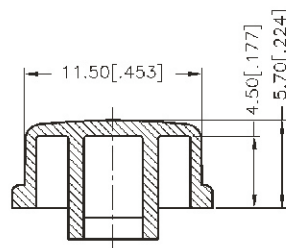
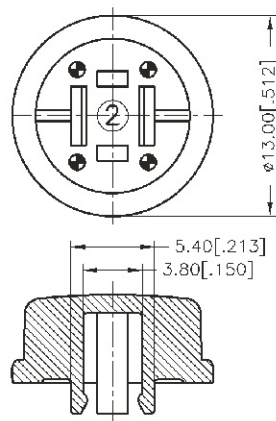
Cap color :  
Y = Yellow  
B = Blue  
R = Red  
I = Ivory  
K = Black  
G = Green  
S = Salmon  
Ge = Gray

\* KTSC-2 can be applied on DTS□-24.  
PACKAGE: 500 pcs/bag

### KTSC-21



### KTSC-22



# Mouser Electronics

Authorized Distributor

Click to View Pricing, Inventory, Delivery & Lifecycle Information:

[Apem:](#)

[KTSC22K](#)