

# ST Series Miniature Rocker and Lever Switches

## CONTACT RATINGS

**Q Power models** - 6 Amps at 125 VAC, 3 Amps at 250 VAC or 7 Amps at 30 VDC (resistive loads).  
**B Dry Circuit models** - 0.4 Volt-Amps (VA) max. at 20 V max. (AC or DC).  
**UL models** - 6 Amps at 125 VAC or 3 Amps at 250 VAC (75% power factor). UL file no. E66367.  
**CSA models** - Same ratings as UL models. CSA file no. LR54592-1.  
 See page D10 for other contact ratings.

## OTHER RATINGS

**Electrical Life:** 100,000 cycles min. (ST1-1 and ST2-1 only - other models 40,000 cycles min.) - resistive.  
**Initial Contact Resistance:** 3 milliohms max. at 3 VDC, 0.1 Amp.  
**Insulation Resistance:** Greater than 200,000 megohms between terminals and case ground.  
**Dielectric Strength:** Greater than 2000 VAC for 1 minute between terminals and case ground (sea level).  
**Operating Temperature Range:** -30 to +85 C.

## MATERIALS

**Actuator** - J1 & J2 Glass filled polyester. J3 & J4 Nylon or Acetal.  
**Bushing** - Brass, nickel plated  
**Strap** - Stainless steel  
**Case** - Diallyl phthalate, color red  
**Contacts** - Coin silver for power, UL and CSA models; Gold over nickel over brass for dry circuit models  
**Support Bracket** - Brass or steel, tin plated  
**Spring Mounting Bracket** - Stainless steel  
**Bezel** - Nylon. Available in red, white or black - contact factory for other colors.  
**Panel Mounting Bracket** - Stainless steel.

## L.E.D.'s

Intensity: 2.0 mcd at 10 mA. Forward voltage: 2.0 V (3.0 V max.). Max. continuous forward current: 15 mA for red, 30 mA for green and 20 mA for yellow. Red is standard. Yellow and green are optional.  
 L.E.D. specifications are subject to change without notice - consult factory.

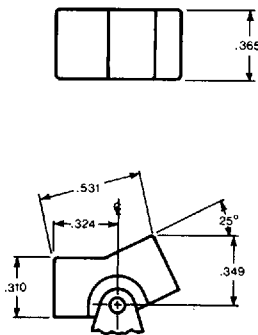
## INDEX

Models with complete model numbers specified ..... Pg. D3 - Pg. D8  
 Selection guide for ST series miniature rocker & lever switches ..... Pg. D9- Pg. D10

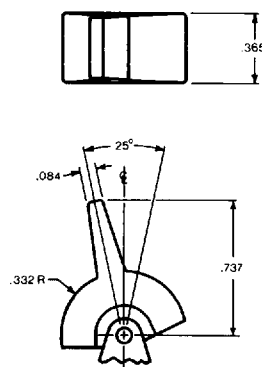
SPECIFICATIONS SUBJECT TO CHANGE WITHOUT NOTICE.

### Options—Actuators

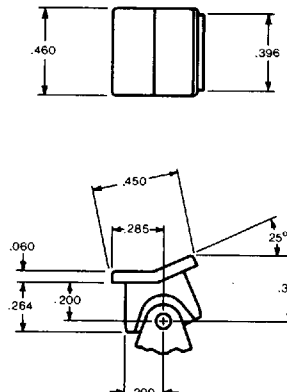
Colors available: J1 & J2 - Black, Red or White.  
 J3 & J4 - Black only. See order format pg. D9 to specify.



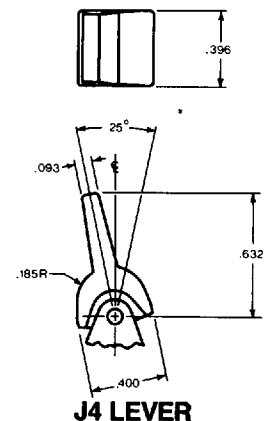
**J1 ROCKER**



**J2 LEVER**

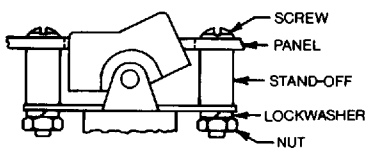


**J3 ROCKER**



**J4 LEVER**

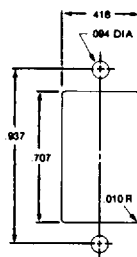
### PANEL MOUNTING INFORMATION



#### MOUNTING HARDWARE

Hex Nut — Stainless Steel  
 Screw — Stainless Steel  
 Lock Washer — Stainless Steel  
 Stand-Off — Aluminum  
 (2 ea. of the above)

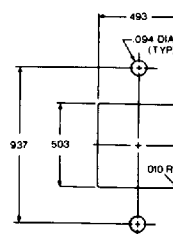
1/4 PANEL HARDWARE SUPPLIED  
 IF NOT SPECIFIED



**J1 OR J2**

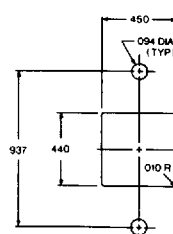
PANEL THICKNESS	HARDWARE NO.	STAND-OFF LENGTH
1/16	A322-3	.295
3/32	A322-2	.264
1/8	A322-1	.233

### RECOMMENDED PANEL CUTOUTS



**J3**

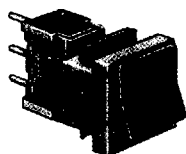
HARDWARE NO.	STAND-OFF LENGTH
A322-2	.264
A322-1	.233
A322-4	.202



**J4**

HARDWARE NO.	STAND-OFF LENGTH
A322-1	.233
A322-4	.202
A322-5	.171

**J93 bezel**  
with p.c. or wirewrap terminals  
for printed circuit mounting  
(bezel projects through panel cutout)



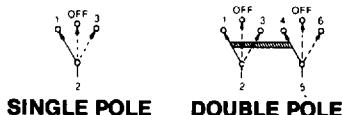
**J3 ROCKER SHOWN**

**SINGLE POLE (SHOWN)**

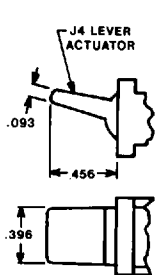
† MODELS				HANDLE POSITION AND CIRCUITRY		
	Power Circuit Model No.	Dry Circuit Model No.	U.L. Model No.	U.S.A. marking on opposite side		
<b>SINGLE POLE</b>	ST1-1L5S5CQJ3J93	ST1-1L5S5CBJ3J93	UL11L5S5CQJ3J93	ON	NONE	ON
	ST1-2L5S5CQJ3J93	ST1-2L5S5CBJ3J93	UL12L5S5CQJ3J93	ON	OFF	ON
	ST1-3L5S5CQJ3J93	ST1-3L5S5CBJ3J93	UL13L5S5CQJ3J93	(ON)	OFF	(ON)
	ST1-4L5S5CQJ3J93	ST1-4L5S5CBJ3J93	UL14L5S5CQJ3J93	ON	OFF	(ON)
	ST1-5L5S5CQJ3J93	ST1-5L5S5CBJ3J93	UL15L5S5CQJ3J93	ON	NONE	(ON)
<b>DOUBLE POLE</b>	ST2-1L5S5CQJ3J93	ST2-1L5S5CBJ3J93	UL21L5S5CQJ3J93	ON	NONE	ON
	ST2-2L5S5CQJ3J93	ST2-2L5S5CBJ3J93	UL22L5S5CQJ3J93	ON	OFF	ON
	ST2-3L5S5CQJ3J93	ST2-3L5S5CBJ3J93	UL23L5S5CQJ3J93	(ON)	OFF	(ON)
	ST2-4L5S5CQJ3J93	ST2-4L5S5CBJ3J93	UL24L5S5CQJ3J93	ON	OFF	(ON)
	ST2-5L5S5CQJ3J93	ST2-5L5S5CBJ3J93	UL25L5S5CQJ3J93	ON	NONE	(ON)
	ST2-6L5S5CQJ3J93	ST2-6L5S5CBJ3J93	UL26L5S5CQJ3J93	ON	ON	ON
	ST2-7L5S5CQJ3J93	ST2-7L5S5CBJ3J93	UL27L5S5CQJ3J93	(ON)	ON	(ON)
	ST2-8L5S5CQJ3J93	ST2-8L5S5CBJ3J93	UL28L5S5CQJ3J93	ON	ON	(ON)
	Term. Conn.	Term. Conn.	Term. Conn.	1-2, 4-5	1-2, 5-6	2-3, 5-6

CONTACTS MAKE OPPOSITE HANDLE DIRECTION. PARENTHESIS INDICATES MOMENTARY ACTION. † MODELS LISTED HAVE C TERMINATIONS AND J3 ACTUATOR. IF OTHER OPTION BELOW IS DESIRED, SUBSTITUTE OPTION SUFFIX IN MODEL NUMBER.

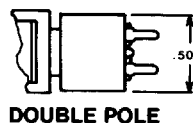
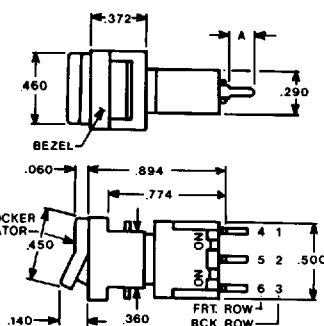
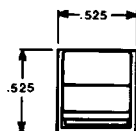
NOTE: ADD ACTUATOR COLOR TO MODEL NUMBER. SEE PAGES D2 & D9. ALSO, SPECIFY BEZEL COLOR - BLACK, WHITE OR RED. (SEE PAGE D9).



**SINGLE POLE DOUBLE POLE**

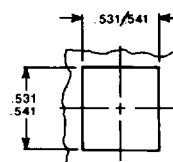


OPTION SUFFIX	DIM. A
C	.188
W	.688

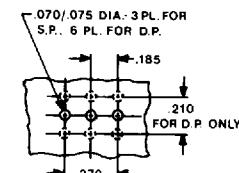


**DOUBLE POLE**

TERM. NOS. FOR REFERENCE ONLY

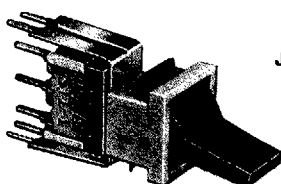


**PANEL CUTOUT**



**P.C. LAYOUT**

**J93 bezel**  
with p.c. terminals  
for printed circuit mounting  
(bezel projects through panel cutout)



**J4 LEVER SHOWN**

**SINGLE POLE (SHOWN)**

† MODELS				HANDLE POSITION AND CIRCUITRY		
	Power Circuit Model No.	Dry Circuit Model No.	U.L. Model No.	U.S.A. marking on opposite side		
<b>SINGLE POLE</b>	ST1-1L5S5V30QJ3J93	ST1-1L5S5V30BJ3J93	UL11L5S5V30QJ3J93	ON	NONE	ON
	ST1-2L5S5V30QJ3J93	ST1-2L5S5V30BJ3J93	UL12L5S5V30QJ3J93	ON	OFF	ON
	ST1-3L5S5V30QJ3J93	ST1-3L5S5V30BJ3J93	UL13L5S5V30QJ3J93	(ON)	OFF	(ON)
	ST1-4L5S5V30QJ3J93	ST1-4L5S5V30BJ3J93	UL14L5S5V30QJ3J93	ON	OFF	(ON)
	ST1-5L5S5V30QJ3J93	ST1-5L5S5V30BJ3J93	UL15L5S5V30QJ3J93	ON	NONE	(ON)
<b>DOUBLE POLE</b>	ST2-1L5S5V30QJ3J93	ST2-1L5S5V30BJ3J93	UL21L5S5V30QJ3J93	ON	NONE	ON
	ST2-2L5S5V30QJ3J93	ST2-2L5S5V30BJ3J93	UL22L5S5V30QJ3J93	ON	OFF	ON
	ST2-3L5S5V30QJ3J93	ST2-3L5S5V30BJ3J93	UL23L5S5V30QJ3J93	(ON)	OFF	(ON)
	ST2-4L5S5V30QJ3J93	ST2-4L5S5V30BJ3J93	UL24L5S5V30QJ3J93	ON	OFF	(ON)
	ST2-5L5S5V30QJ3J93	ST2-5L5S5V30BJ3J93	UL25L5S5V30QJ3J93	ON	NONE	(ON)
	ST2-6L5S5V30QJ3J93	ST2-6L5S5V30BJ3J93	UL26L5S5V30QJ3J93	ON	ON	ON
	ST2-7L5S5V30QJ3J93	ST2-7L5S5V30BJ3J93	UL27L5S5V30QJ3J93	(ON)	ON	(ON)
	ST2-8L5S5V30QJ3J93	ST2-8L5S5V30BJ3J93	UL28L5S5V30QJ3J93	ON	ON	(ON)
	Term. Conn.	Term. Conn.	Term. Conn.	1-2, 4-5	1-2, 5-6	2-3, 5-6

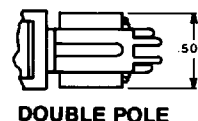
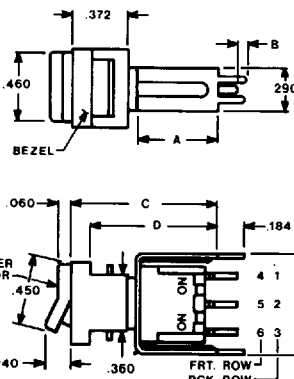
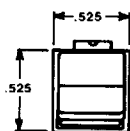
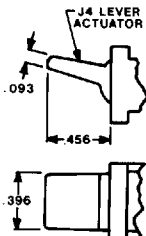
CONTACTS MAKE OPPOSITE HANDLE DIRECTION. PARENTHESIS INDICATES MOMENTARY ACTION. † MODELS LISTED HAVE V30 TERMINATIONS. IF V40 (SEE TABLE BELOW) OR V70, V71, V80 OR V81 (SEE PAGE C13) IS DESIRED, SUBSTITUTE FOR V30 IN MODEL NUMBER.

NOTE: ADD ACTUATOR COLOR TO MODEL NUMBER. SEE PAGES D2 & D9. ALSO, SPECIFY BEZEL COLOR - BLACK, WHITE OR RED. (SEE PAGE D9).



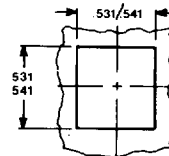
**SINGLE POLE DOUBLE POLE**

OPTION SUFFIX	DIM. A	DIM. B	DIM. C	DIM. D
V30	.527	.024	.940	.820
V40	.647	.048	1.060	.940

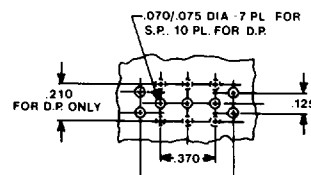


**DOUBLE POLE**

TERM. NOS. FOR REFERENCE ONLY



**PANEL CUTOUT**



**P.C. LAYOUT**

# Mouser Electronics

Authorized Distributor

Click to View Pricing, Inventory, Delivery & Lifecycle Information:

[Apem:](#)

[ST1-1L5S5CQJ3J9322](#)