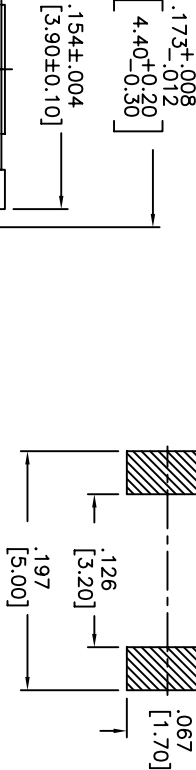
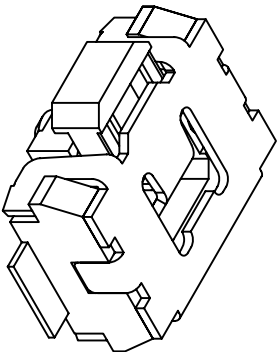
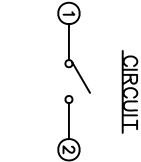
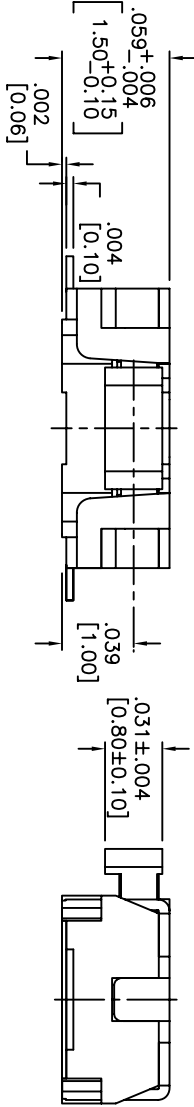
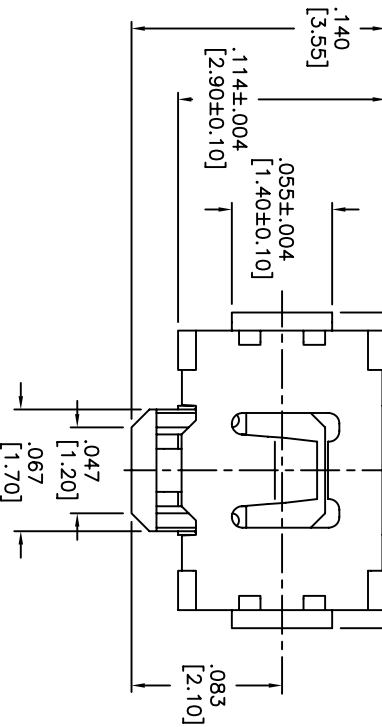


THIS DOCUMENT IS THE PROPERTY OF APEN COMPONENTS AND SHALL NOT BE COPIED, REPRODUCED, DISCLOSED OR USED AS THE BASIS FOR MANUFACTURING OR SALE WITHOUT PERMISSION OF A DULY AUTHORIZED REPRESENTATIVE OF APEN COMPONENTS INC.



HATCHED AREA SHOWS SOLDERING LAND.
P.C.B. LAYOUT
UNLESS OTHERWISE SPECIFIED
ALL P.C. TOLERANCES ARE ±.002 [0.05]

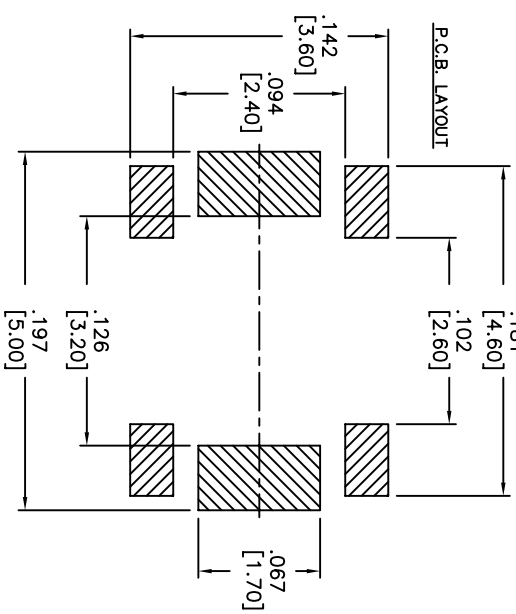
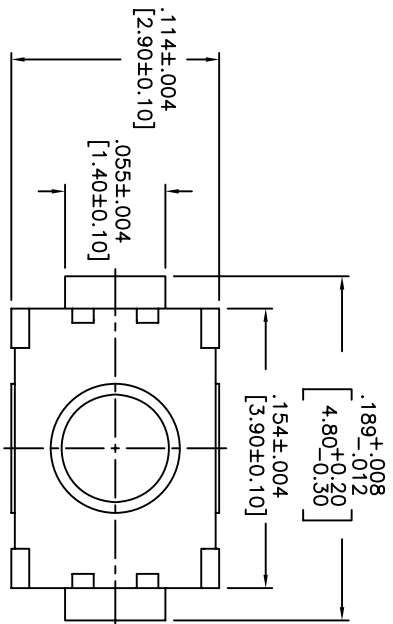


DATE	SYM	REVISION RECORD	DWN.	CK.
5/08	A	ECO# 778	CD	PD

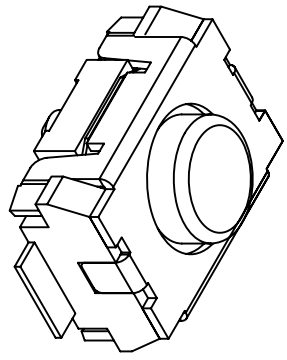
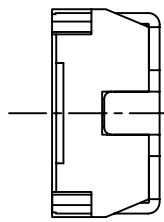
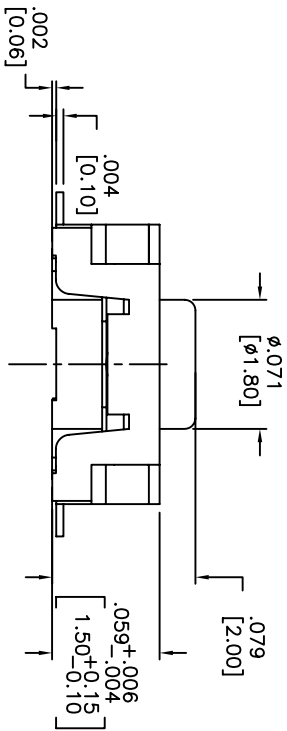
DESCRIPTION: SIDE PUSH MECHANICAL CONTACT SWITCH.
SPECIFICATIONS:
OPERATION FORCE: 220± 65gf
STROKE: 0.24±.08mm
OPERATION TEMP.: -25°C TO +70°C.
STORAGE TEMP.: -30°C TO +80°C.
ELECTRICAL LIFE: 100,000 CYCLES.
RATING: 50mA, 12VDC.
CONTACT RESISTANCE: 100mΩ MAX.
INSULATION RESISTANCE: 100MΩ MIN. AT 100VDC.
DIELECTRIC STRENGTH: 100VAC/1 MINUTE.
CONTACT ARRANGEMENT: 1 POLE 1 THROW.
VIBRATION TEST: PASSED METHOD 201A
MIL-STD-202F.
SHOCK TEST: 50G PER METHOD 213B CONDITION A OF MIL-STD-202F
MATERIALS:
COVER: STAINLESS STEEL
BASE: LCP HIGH-TEMP. THERMOPLASTIC.
COLOR, WHITE.
STEM: LCP HIGH-TEMP. THERMOPLASTIC.
COLOR, BLACK.
CONTACT DISK: STAINLESS STEEL
WITH SILVER CLADDING
TERMINAL: BRASS WITH SILVER PLATING
PACKAGING: TAPE AND REEL
(3,500 PIECES PER REEL)
ROHS COMPLIANT
LEAD FREE SOLDERING COMPATIBLE
HAND SOLDERING: 320°C MAX WITH 30 WATT IRON FOR 2 SECONDS
IR REFLOW: 260°C MAX
CUSTOMER PART NO.: 263262

Q.A. INSPECT.	DESIGNER'S INITIAL	DATE	DRAWING NO.	REV.
APEN	63 Neck Rd. 01835 Haverhill, MA 01835 Tel: 978-372-3534 Fax: 978-372-3534	7/31/06	AMPTFVTR	A
TITLE	SHEET	SIZE	SCALE	THIRD ANGLE PROJECTION
TACT SWITCH	1 OF 1	B	15:1	
DO NOT SCALE DRAWING				

THIS DOCUMENT IS THE PROPERTY OF APM COMPONENTS AND SHALL NOT BE COPIED, REPRODUCED, DISCLOSED OR USED AS THE BASIS FOR MANUFACTURING OR SALE WITHOUT PERMISSION OF A DULY AUTHORIZED REPRESENTATIVE OF APM COMPONENTS INC.



HATCHED AREA SHOWS SOLDERING LAND



CIRCUIT

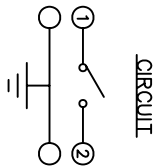
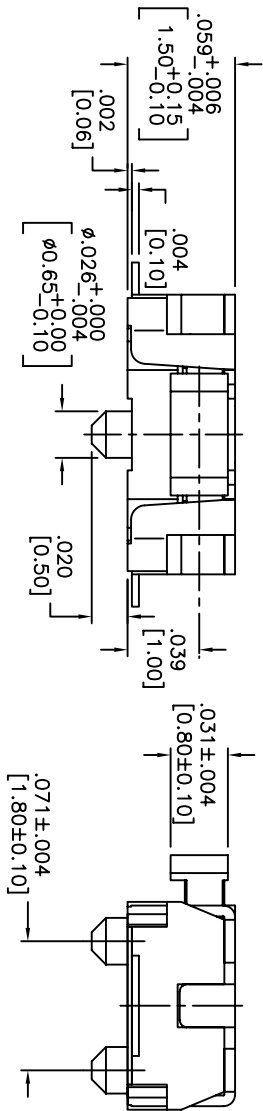
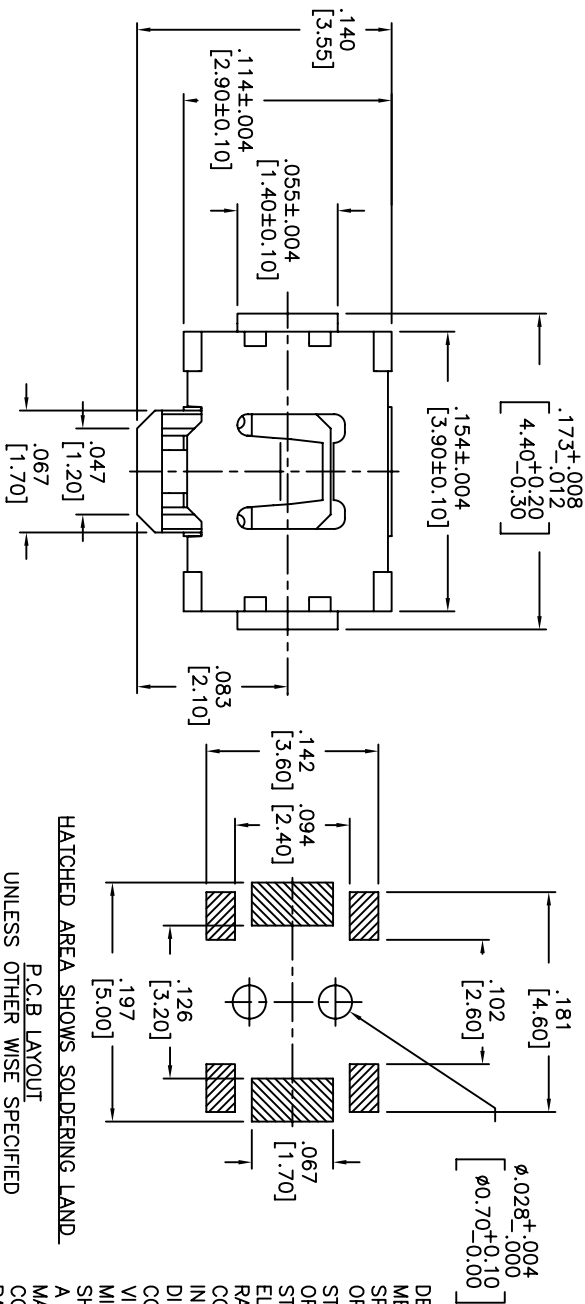
DATE	SYM	REVISION	RECORD	DWN.	CK.
5/08	B	ECO# 778		CD	PD

DESCRIPTION: VERTICAL PUSH MECHANICAL CONTACT SWITCH.
SPECIFICATIONS:
OPERATION FORCE: 160±50gf
OPERATION TEMP.: -25°C TO +70°C.
STORAGE TEMP.: -30°C TO +80°C.
ELECTRICAL LIFE: 100,000 CYCLES.
RATING: 50ma, 12VDC.
VIBRATION RESISTANCE: PASSES METHOD 201A MIL-STD-202F
SHOCK RESISTANCE: 50G PER METHOD 213B MIL-STD-202F
CONTACT RESISTANCE: 100mΩ MAX.
INSULATION RESISTANCE: 100MΩ MIN. AT 100VDC.
DIELECTRIC STRENGTH: 100VAC/1 MINUTE.
CONTACT ARRANGEMENT: 1 POLE 1 THROW.
MATERIALS:
COVER: STAINLESS STEEL
BASE: LCP HIGH-TEMP. THERMOPLASTIC.
COLOR, WHITE.
STEM: LCP HIGH-TEMP. THERMOPLASTIC.
COLOR, BLACK
CONTACT DISK: STAINLESS STEEL WITH SILVER CLADDING
TERMINAL: BRASS WITH SILVER PLATING
TAPE: TEFLON.
TAPE & REEL PACKAGING, 2,000 PER REEL
SOLDERING: HAND SOLDERING: 30 WATT IRON AT 320°C FOR 2 SECONDS
IR REFLOW: 240°C MAX
RoHS COMPLIANT

Q.A. INSPECT:		63 Neck Rd. Haverhill, MA 01830 Phone: 978-372-3534 Fax: 978-372-3534		DRN. CJD
DESIGNATES CRITICAL DIMENSION		APM FIRST ANGLE PROJECTION (1:1)		OK: PJD
TOLERANCES (UNLESS OTHERWISE SPECIFIED)		INCH		THIRD ANGLE PROJECTION
.XX±.XX[0.5]		SHEET 1 OF 1		B
.XX±.XX[0.20]		SIZE 15:1		
.XXX±.XXX[0.02]		SCALE		
ANGLE = 30.5°		TITLE		
		VERTICAL PUSH		
		TACT SWITCH		
DO NOT SCALE DRAWING		DATE		
		2/4/08		
		DRAWING NO.		
		AMPTFGP2VTR		
		REV		
		B		

THIS DOCUMENT IS THE PROPERTY OF APEM COMPONENTS AND SHALL NOT BE COPIED, REPRODUCED, DISCLOSED OR USED AS THE BASIS FOR MANUFACTURING OR SALE WITHOUT PERMISSION OF A DULY AUTHORIZED REPRESENTATIVE OF APEM COMPONENTS INC.

DATE	SYM	REVISION RECORD	DWN.	CK.
01/06	A	ECO # 526	CD	PD
5/08	B	ECO# 778	CD	PD



DESCRIPTION: SIDE PUSH MECHANICAL CONTACT SWITCH.

SPECIFICATIONS:

OPERATION FORCE: 220 ± 65gf

STROKE: 0.2[±]0.09mm

OPERATION TEMP.: -25°C TO +70°C.

STORAGE TEMP.: -30° TO +80°.

ELECTRICAL LIFE: 100,000 CYCLES.

RATING: 50mA, 12VDC.

CONTACT RESISTANCE: 100mΩ MAX.

INSULATION RESISTANCE: 100MΩ MIN. AT 100VDC.

DIELECTRIC STRENGTH: 100VAC/1 MINUTE.

CONTACT ARRANGEMENT: 1 POLE 1 THROW.

VIBRATION TEST: PASSED METHOD 201A MIL-STD-202F.

SHOCK TEST: 50G PER METHOD 213B CONDITION A OF MIL-STD-202F

MATERIALS:

COVER: STAINLESS STEEL

BASE: LCP HIGH-TEMP. THERMOPLASTIC.

COLOR: WHITE.

STEM: LCP HIGH-TEMP. THERMOPLASTIC.

COLOR: BLACK.

CONTACT DISK: STAINLESS STEEL WITH SILVER CLADDING

TERMINAL: BRASS WITH SILVER PLATING

PACKAGING: TAPE AND REEL (3,500 PEICES PER REEL)

ROHS COMPLIANT

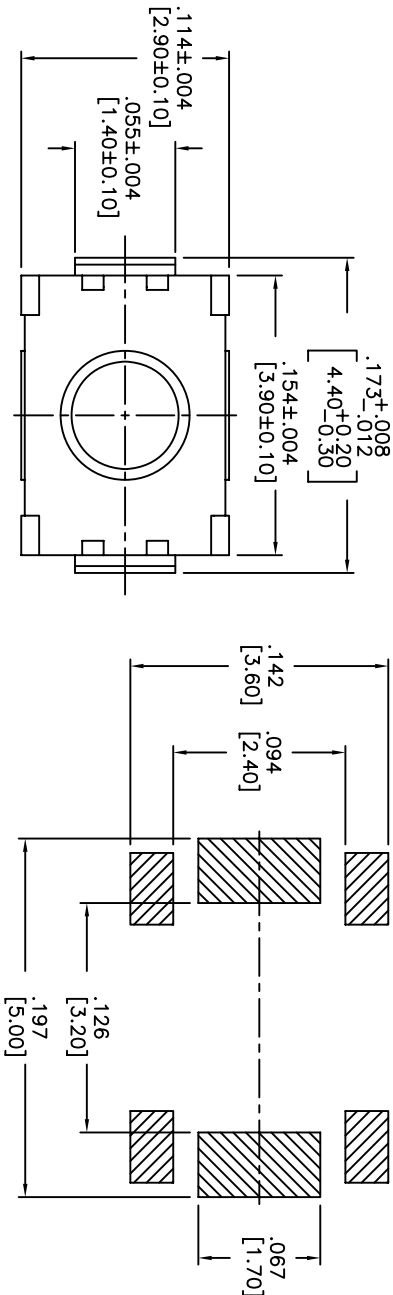
HAND SOLDERING: 320°C MAX WITH 30 WATT IRON FOR 2 SECONDS

IR REFLOW: 240°C MAX

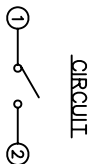
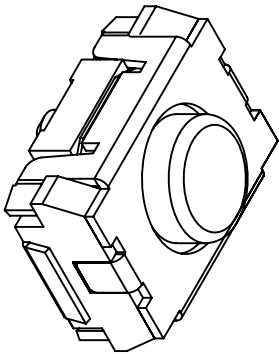
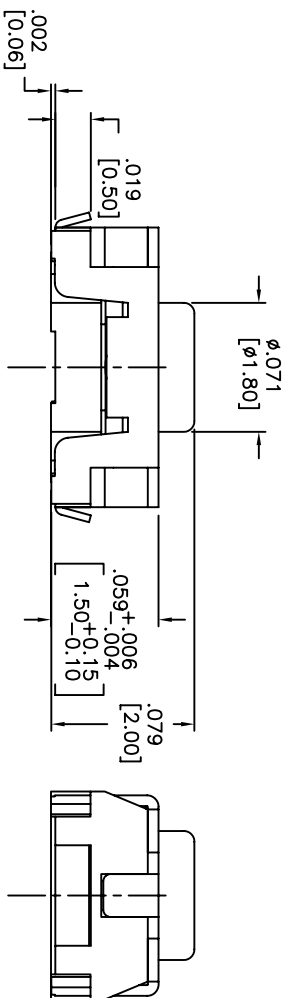
Q.A. INSPECT.		DESIGNATES CRITICAL DIMENSION		TOLERANCES (UNLESS AS NOTED)		TITLE		DATE		DRAWING NO.		REV.	
INCH	SHEET	SIZE	SCALE	THIRD ANGLE PROJECTION		TACT SWITCH		06/30/05		AMPTCFGVTR		B	
(MM)	1 OF 1	B	15:1										
3000 [±] ±.0008[0.02]													
ANGLE = 30.5°													

1 2 3 4 5 6 7 8

THIS DOCUMENT IS THE PROPERTY OF APDM COMPONENTS AND SHALL NOT BE COPIED, REPRODUCED, DISCLOSED OR USED AS THE BASIS FOR MANUFACTURING OR SALE WITHOUT PERMISSION OF A DULY AUTHORIZED REPRESENTATIVE OF APDM COMPONENTS INC.



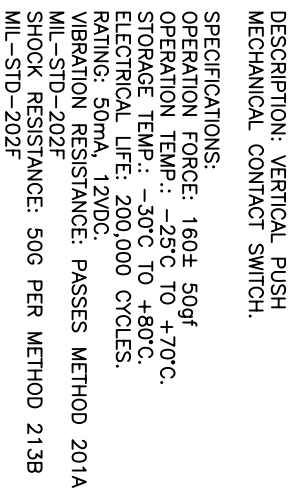
HATCHED AREA SHOWS SOLDERING LAND



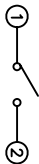
DATE	SYM	REVISION RECORD	DWN.	CK.
5/08	B	ECO# 778	CD	PD

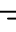

DESCRIPTION: VERTICAL PUSH MECHANICAL CONTACT SWITCH.
SPECIFICATIONS:
OPERATION FORCE: 160± 50gf
OPERATION TEMP.: -25°C TO +70°C.
STORAGE TEMP.: -30°C TO +80°C.
ELECTRICAL LIFE: 100,000 CYCLES.
RATING: 50mA, 12VDC.
VIBRATION RESISTANCE: PASSES METHOD 201A
MIL-STD-202F
SHOCK RESISTANCE: 50G PER METHOD 213B
MIL-STD-202F
CONTACT RESISTANCE: 100mΩ MAX.
INSULATION RESISTANCE: 100MΩ MIN. AT 100VDC.
DIELECTRIC STRENGTH: 100VAC/1 MINUTE.
CONTACT ARRANGEMENT: 1 POLE 1 THROW.
MATERIALS:
COVER: STAINLESS STEEL
BASE: LCP HIGH-TEMP. THERMOPLASTIC.
COLOR: WHITE.
STEM: LCP HIGH-TEMP. THERMOPLASTIC.
COLOR: BLACK.
CONTACT DISK: STAINLESS STEEL
WITH SILVER CLADDING
TERMINAL: BRASS WITH SILVER PLATING
TAPE: TEFLON.
TAPE & REEL PACKAGING, 2,000 PER REEL
SOLDERING:
HAND SOLDERING: 30 WATT IRON AT 320°C FOR 2 SECONDS
IR REFLOW: 240°C MAX
RoHS COMPLIANT

Q.A. INSECT.	63 NICK RD.	PER. CJD
DESIGNATES CRITICAL DIMENSION	APDM Haverhill, MA 01830 1-800-372-3534 FAX 978-372-3534	BR: PJD
TOLERANCES (UNLESS OTHERWISE SPECIFIED)		
.XX±.XX(X)	1 OF 1	SCALE 15:1
.XXX±.XXX(X)	B	THIRD ANGLE PROJECTION
.XXXX±.XXXX(X)		
ANGLE = 30.5°		
DO NOT SCALE DRAWING	DATE 2/4/08	DRAWING NO. AMPTLGP2VTR
		REV B

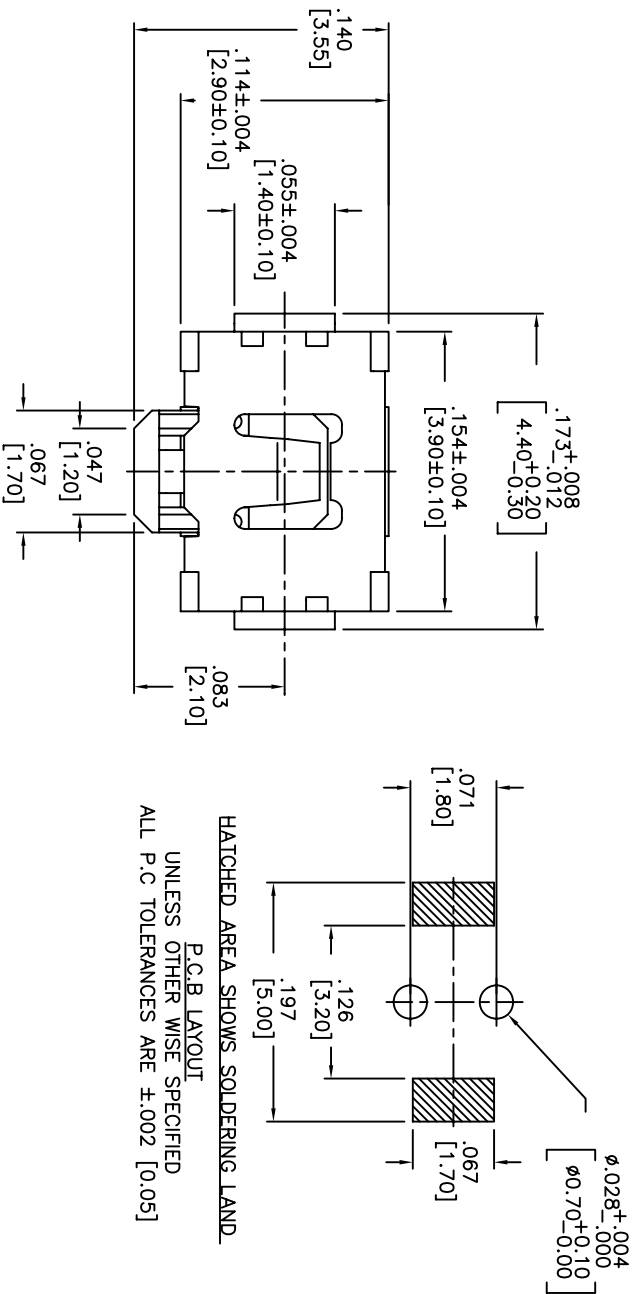


P.C.B. LAUOUT
UNLESS OTHERWISE SPECIFIED
ALL P.C. TOLERANCES ARE ± 0.02 [0.50]

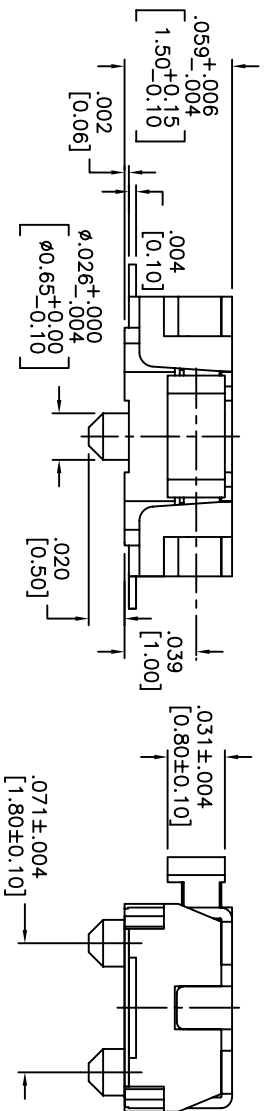


DATE	6/30/05	DRAWING NO.	AMPTCFGP2YTR	REV	B
TITLE		TACT SWITCH			
 63 Mack Rd. Haverhill, MA 01835 Phone: 978-372-1002 Fax: 978-372-1004		PRN. CJD BR: CHK: PJD BR:			
INCH	SHEET	SIZE	SCALE	THIRD ANGLE PROJECTION	
1/8	OF 1	B	15:1		

THIS DOCUMENT IS THE PROPERTY OF APEM COMPONENTS AND SHALL NOT BE COPIED, REPRODUCED, DISCLOSED OR USED AS THE BASIS FOR MANUFACTURING OR SALE WITHOUT PERMISSION OF A DULY AUTHORIZED REPRESENTATIVE OF APEM COMPONENTS INC.


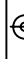


HATCHED AREA SHOWS SOLDERING LAND
P.C.B LAYOUT
UNLESS OTHER WISE SPECIFIED
ALL P.C TOLERANCES ARE ± 0.02 [0.05]

CIRCUIT

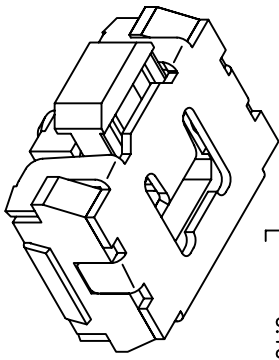
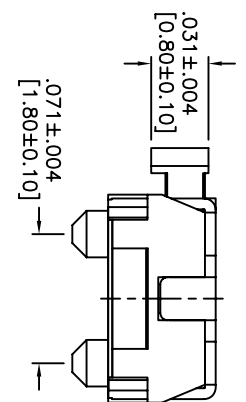
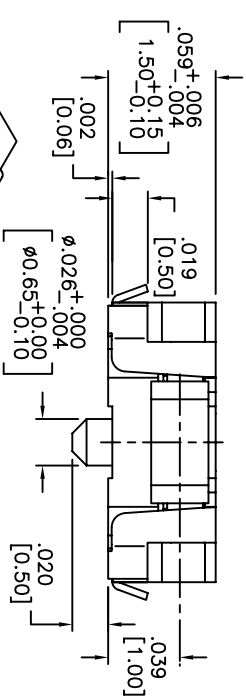
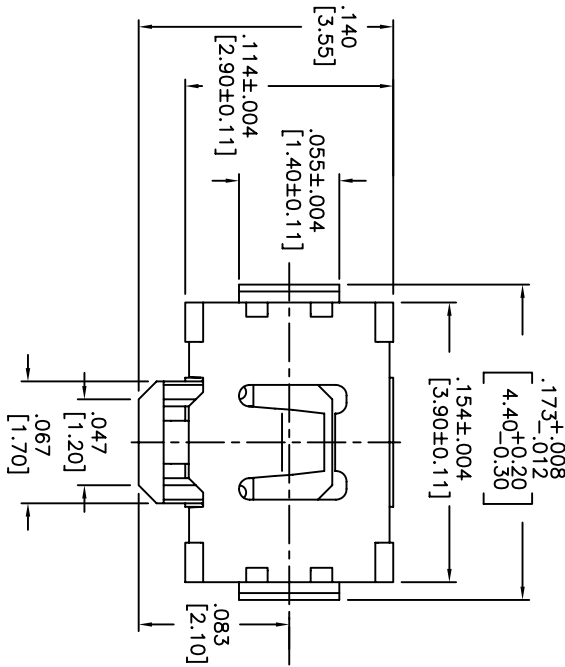
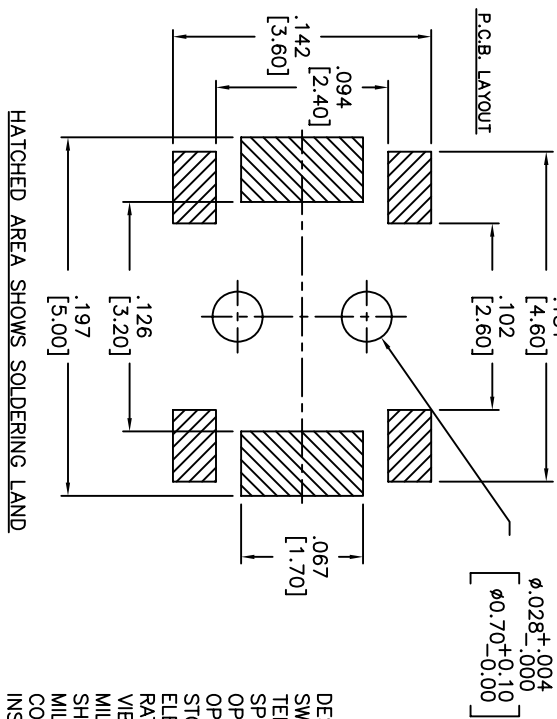
DATE	SYM	REVISION RECORD	DMN.	CK.
5/08	B	ECO# 778	CD	PD

DESCRIPTION: SIDE PUSH
MECHANICAL CONTACT SWITCH,
SPECIFICATIONS:
OPERATION FORCE: 220± 65gf
STROKE: 0.2±0.19mm
OPERATION TEMP.: -25°C TO +70°C.
STORAGE TEMP.: -30°C TO +80°C.
ELECTRICAL LIFE: 100,000 CYCLES.
RATING: 50mA, 12VDC.
CONTACT RESISTANCE: 100mΩ MAX.
INSULATION RESISTANCE: 100MΩ MIN. AT 100VDC.
DIELECTRIC STRENGTH: 100VAC/1 MINUTE.
CONTACT ARRANGEMENT: 1 POLE 1 THROW.
VIBRATION TEST: PASSED METHOD 201A
MIL-STD-202F.
SHOCK TEST: 50G PER METHOD 213B CONDITION
A OF MIL-STD-202F
MATERIALS:
COVER: STAINLESS STEEL
BASE: LCP HIGH-TEMP. THERMOPLASTIC.
COLOR: WHITE.
STEM: LCP HIGH-TEMP. THERMOPLASTIC.
COLOR: BLACK.
CONTACT DISK: STAINLESS STEEL
WITH SILVER CLADDING
TERMINAL: BRASS WITH SILVER PLATING
PACKAGING: TAPE AND REEL
(3,500 PEICES PER REEL)
ROHS COMPLIANT
LEAD FREE SOLDERING COMPATIBLE
HAND SOLDERING: 320°C MAX WITH 30 WATT IRON
FOR 2 SECONDS
IR REFLOW: 260°C MAX

0A. INSPECT 		DRN. CJD BY:	
DESIGNATES OPTICAL DIMENSION		CHK. PJD BY:	
TOLERANCES (EXCEPT AS NOTED) .XX(.XX±.02) [0.5] .XXX(.XX±.008) [0.2] .XXXX(.XX±.0008) [0.02] ANGLE = ±0.5°		#3 NASH RD. HOVERHILL, MA 01855 TEL: 978-372-1802 FAX: 978-372-8534	
INCH (MM)		SHEET 1 OF 1	
TITLE TACT SWITCH		SIZE B	
DATE 5/2/06		SCALE 15:1	
DRAWING NO. AMP/TCFVTR		THIRD ANGLE PROJECTION 	
DO NOT SCALE DRAWING		REV B	

THIS DOCUMENT IS THE PROPERTY OF APM COMPONENTS AND SHALL NOT BE COPIED, REPRODUCED, DISCLOSED OR USED AS THE BASIS FOR MANUFACTURING OR SALE WITHOUT PERMISSION OF A DULY AUTHORIZED REPRESENTATIVE OF APM COMPONENTS INC.

DATE	SYM	REVISION RECORD	DWN.	CK.
1/06	B	ECO# 526	CD	PD
5/06	C	ECO# 778	CD	PD



CIRCUIT

DESCRIPTION: SIDE PUSH MECHANICAL CONTACT SWITCH, WITH BENDING AND GROUNDING TERMINALS.

SPECIFICATIONS:

OPERATION FORCE: 220± 65gf
OPERATION TEMP.: -25°C TO +70°C.
STORAGE TEMP.: -30°C TO +80°C.
ELECTRICAL LIFE: 100,000 CYCLES.
RATING: 50mA, 12VDC.
VIBRATION RESISTANCE: PASSES METHOD 201A MIL-STD-202F
SHOCK RESISTANCE: 50G PER METHOD 213B MIL-STD-202F

CONTACT RESISTANCE: 100mΩ MAX.
INSULATION RESISTANCE: 100MΩ MIN. AT 100VDC.
DIELECTRIC STRENGTH: 100VAC/1 MINUTE.
CONTACT ARRANGEMENT: 1 POLE 1 THROW.
STROKE: .008 +.004 [0.2 +0.05]

MATERIALS:

COVER: STAINLESS STEEL
BASE: LCP HIGH-TEMP. THERMOPLASTIC.
COLOR: WHITE.
STEM: LCP HIGH-TEMP. THERMOPLASTIC.
COLOR: BLACK.

CONTACT DISK: STAINLESS STEEL

WITH SILVER CLADDING

TERMINAL: BRASS WITH SILVER PLATING

TAPE: TEFLON, REEL PACKAGING, 3500 PER REEL

SOLDERING:

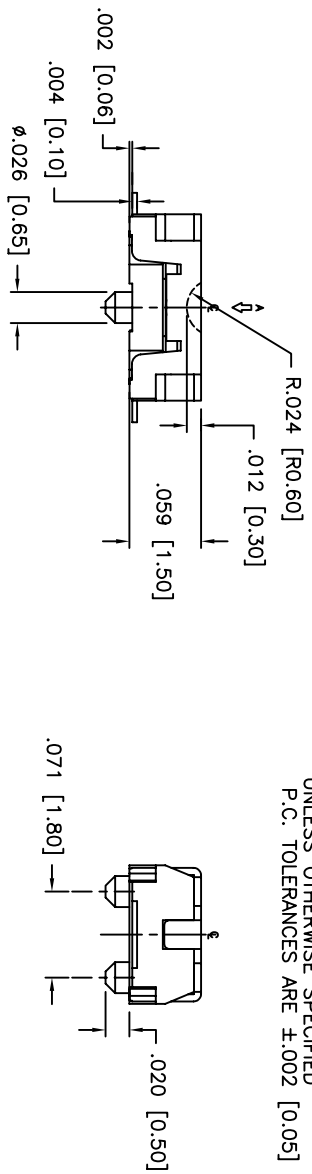
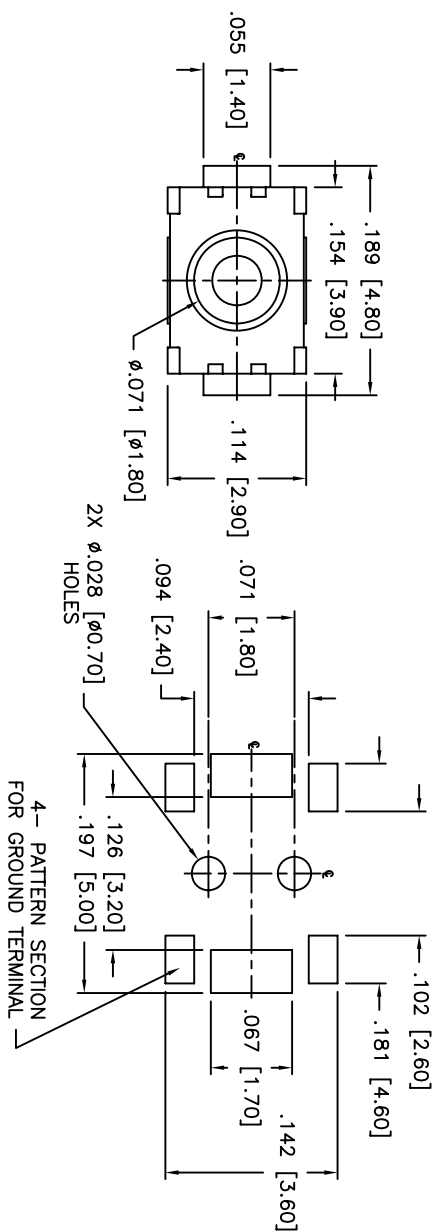
HAND SOLDERING: 30 WATT IRON AT 320°C FOR 2 SECONDS

IR REFLOW: 240°C MAX

RoHS COMPLIANT

Q.A. INSPECT	DESIGNATES CRITICAL DIMENSION	TOLERANCES (UNLESS AS NOTED) XXX±.004[0.20] XXX+/-0.008[0.20] XXX+/-0.008[0.02] ANGLE = 40.5°	INCH SHEET 1 OF 1	SIZE B	SCALE 15:1	THIRD ANGLE PROJECTION	DATE 06/30/05	DRAWING NO. AMPTCLGVTR	REV C
APM	63 Neck Rd. Haverhill, MA 01830 Tel: 978-372-3534 Fax: 978-372-3534	PN: CJD BR: PJD							
TITLE TACT SWITCH									

THIS DOCUMENT IS THE PROPERTY OF APDM COMPONENTS AND SHALL NOT BE COPIED, REPRODUCED, DISCLOSED OR USED AS THE BASIS FOR MANUFACTURING OR SALE WITHOUT PERMISSION OF A DULY AUTHORIZED REPRESENTATIVE OF APDM COMPONENTS INC.



SCHEMATIC

DATE	SYM	REVISION RECORD	DWN.	CK.
1/06	A	ECO # 526	CD	PD
5/06	B	ECO# 778	CD	PD

DESCRIPTION: SPST, NORMALLY OPEN, MOMENTARY, SURFACE MOUNT TACT SWITCH WITH LOCATING PINS

SPECIFICATIONS:
CONTACT RATING: 50mA @ 12VDC
INITIAL CONTACT RESISTANCE: 100MOHMS MAX.
INSULATION RESISTANCE: 100MOHMS MIN. @ 500VDC
DIELECTRIC STRENGTH: 100VAC FOR 1 MINUTE
ELECTRICAL LIFE: 200,000 CYCLES MIN.
OPERATING TEMPERATURE RANGE: -25°C to +70°C
STOP STRENGTH: MAX 3kgf VERTICAL STATIC LOAD
CONT. FOR 15 SEC.

ACTUATION FORCE: 160± 50gf
STORAGE TEMPERATURE RANGE: -30°C TO +80°C
SHOCK RESISTANCE: 50G PER METHOD 213B, MIL-STD-202F
VIBRATION RESISTANCE: PASSES METHOD 201A, MIL-STD-202F
SOLDERING:
IR REFLOW: 240°C MAX.
HAND SOLDERING: 350°C MAX. FOR 3 SECONDS MAX.
(30 WATT IRON MAX.)

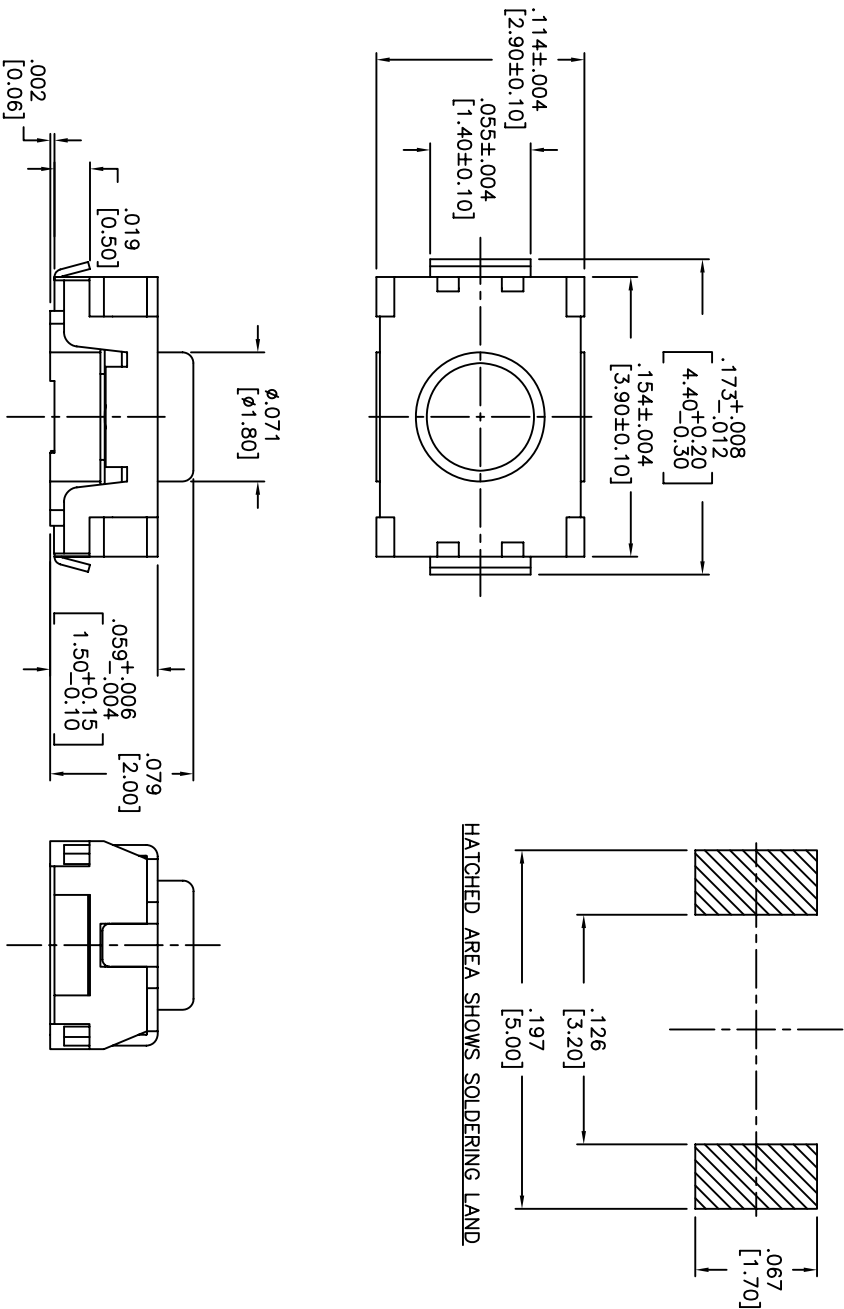
MATERIALS:
BASE: LCP HIGH-TEMP THERMOPLASTIC UL94V-0
ACTUATOR: LCP HIGH-TEMP THERMOPLASTIC UL94V-0
COVER: STAINLESS STEEL
TERMINALS: SILVER PLATED BRASS
SHORTING CONTACT: STAINLESS STEEL WITH SILVER CLADDING
TAPE: TEFLON
ROHS COMPLIANT

NOTE:
1. AFTER SOLDERING, RETURN SWITCHES TO NORMAL TEMPERATURE BEFORE WASHING.

Q.A. INSPECT.	DESIGNER'S INITIAL	DATE	DRAWING NO.	REV.
APDM	63 Neck Rd. 01850 Haverhill, MA 01850 Tel: 978-372-3534 Fax: 978-372-3534	07/20/05	AMPTCFG1VTR	B
TOLERANCES (UNLESS OTHERWISE SPECIFIED)	SHEET 1 OF 1	SIZE B	SCALE 10:1	THIRD ANGLE PROJECTION
.XX±.XX(.XX)				
.XXX±.XXX(.XXX)				
.XXXX±.XXXX(.XXXX)				
ANGLE = 30.5°				
TITLE				
TACT SWITCH WITH LOCATING PINS				

THIS DOCUMENT IS THE PROPERTY OF APDM COMPONENTS AND SHALL NOT BE COPIED, REPRODUCED, DISCLOSED OR USED AS THE BASIS FOR MANUFACTURING OR SALE WITHOUT PERMISSION OF A DULY AUTHORIZED REPRESENTATIVE OF APDM COMPONENTS INC.

P.C.B. LAYOUT



HATCHED AREA SHOWS SOLDERING LAND

DESCRIPTION: VERTICAL PUSH MECHANICAL CONTACT SWITCH.

SPECIFICATIONS:

OPERATION FORCE: 220 \pm 65gf

OPERATION TEMP.: -25°C TO +70°C.

STORAGE TEMP.: -30°C TO +80°C.

ELECTRICAL LIFE: 200,000 CYCLES.

RATING: 50mA, 12VDC.

VIBRATION RESISTANCE: PASSES METHOD 201A

MIL-STD-202F

SHOCK RESISTANCE: 50G PER METHOD 213B

MIL-STD-202F

CONTACT RESISTANCE: 100m Ω MAX.

INSULATION RESISTANCE: 100M Ω MIN. AT 100VDC.

DIELECTRIC STRENGTH: 100VAC/1 MINUTE.

CONTACT ARRANGEMENT: 1 POLE 1 THROW.

MATERIALS:

COVER: STAINLESS STEEL

BASE: LCP HIGH-TEMP. THERMOPLASTIC.

COLOR, WHITE.

STEM: LCP HIGH-TEMP. THERMOPLASTIC.

COLOR, BLACK.

CONTACT DISK: STAINLESS STEEL WITH SILVER CLADDING

TERMINAL: BRASS WITH SILVER PLATING

TAPE: TEFLON.

TAPE & REEL PACKAGING, 2,000 PER REEL

SOLDERING:

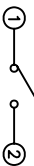
HAND SOLDERING: 30 WATT IRON AT 320°C FOR 2 SECONDS

IR REFLOW: 240°C MAX

RoHS COMPLIANT

LEAD FREE PROCESS COMPATIBLE

CIRCUIT

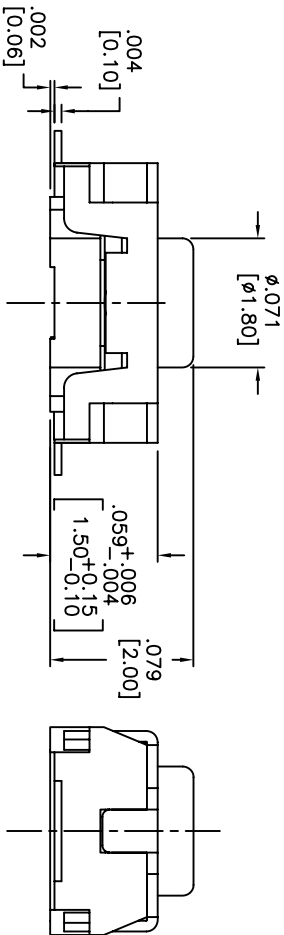
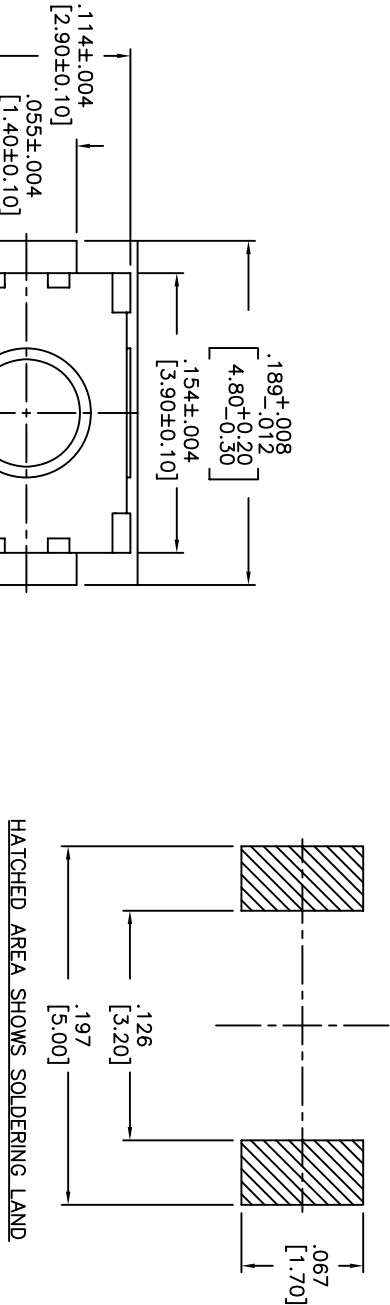


DATE	SYM	REVISION RECORD	DWN.	CK.
1/06	A	ECO# 526	CD	PD
5/06	B	ECO# 778	CD	PD

Q.A. INSPECT.		DESIGNATES CRITICAL.		TOLERANCES (UNLESS OTHERWISE SPECIFIED)		ANGLE = 40.5°	
APDM		63 Neck Rd. 01835		1 OF 1		15:1	
TITLE		TACT		SIZE		SCALE	
DATE		01/23/06		DRAWING NO.		AMPTLP2VTR	
DO NOT SCALE		DRAWING		REV		B	

THIS DOCUMENT IS THE PROPERTY OF APDM COMPONENTS AND SHALL NOT BE COPIED, REPRODUCED, DISCLOSED OR USED AS THE BASIS FOR MANUFACTURING OR SALE WITHOUT PERMISSION OF A DULY AUTHORIZED REPRESENTATIVE OF APDM COMPONENTS INC.

P.C.B. LAYOUT



DATE	SYM	REVISION RECORD	DWN.	CK.
5/08	B	ECO# 778	CD	PD

DESCRIPTION: VERTICAL PUSH MECHANICAL CONTACT SWITCH.

SPECIFICATIONS:

OPERATION FORCE: 160± 50gf

OPERATION TEMP.: -25°C TO +70°C.

STORAGE TEMP.: -30°C TO +80°C.

ELECTRICAL LIFE: 200,000 CYCLES.

RATING: 50mA, 12VDC.

VIBRATION RESISTANCE: PASSES METHOD 201A

MIL-STD-202F

SHOCK RESISTANCE: 50G PER METHOD 213B

MIL-STD-202F

CONTACT RESISTANCE: 100mΩ MAX.

INSULATION RESISTANCE: 100MΩ MIN. AT 100VDC.

DIELECTRIC STRENGTH: 100VAC/1 MINUTE.

CONTACT ARRANGEMENT: 1 POLE 1 THROW.

MATERIALS:

COVER: STAINLESS STEEL

BASE: LCP HIGH-TEMP. THERMOPLASTIC.

COLOR, WHITE.

STEM: LCP HIGH-TEMP. THERMOPLASTIC.

COLOR, BLACK.

CONTACT DISK: STAINLESS STEEL

WITH SILVER CLADDING

TERMINAL: BRASS WITH SILVER PLATING

TAPE: TEFLON.

TAPE & REEL PACKAGING, 2,000 PER REEL

SOLDERING:

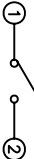
HAND SOLDERING: 30 WATT IRON AT 320°C FOR

2 SECONDS

IR REFLOW: 260°C MAX

RoHS COMPLIANT

LEAD FREE PROCESS COMPATIBLE



CIRCUIT

Q.A. INSPECT.	DESIGNATES CRITICAL DIMENSION	TOLERANCES (UNLESS AS NOTED)	ANGLE = 40.5°
INCH	SHEET 1 OF 1	SIZE B	SCALE 15:1
TITLE TACT SWITCH	THIRD ANGLE PROJECTION	DATE 01/23/06	DRAWING NO. AMPTFP2VTR
DO NOT SCALE DRAWING			REV B

Mouser Electronics

Authorized Distributor

Click to View Pricing, Inventory, Delivery & Lifecycle Information:

[Apem:](#)

[AMPTFP2VTR](#)