

IP series

Pushbutton switches for harsh environments •
bushing Ø 12 mm • latching



DISTINCTIVE FEATURES

Latching action
Illuminated or non-illuminated
Compact
Flat round actuator for optional marking
Sealed to IP67



ENVIRONMENTAL SPECIFICATIONS

- Front panel sealing : IP67 according to IEC 60529
- Shock resistance : 100 g according to IEC 512-4, test 6c
- Vibration resistance : 10-500Hz - 10 g according to IEC 512-4, test 6d
- Salt spray : IEC 512-6, test 11f
- Robustness (non-illuminated) : IK06 according to EN 62262 (1 joule)
- Operating temperature : -40 °C to +85 °C (-40 °F to +185 °F)



ELECTRICAL SPECIFICATIONS

- Max. current/voltage rating with resistive load:

4 A 12 VDC, 200,000 cycles
1 A 48 VDC, 200,000 cycles
2 A 48 VDC, 100,000 cycles
3 A 48 VDC, 75,000 cycles
1 A 72 VDC, 15,000 cycles

For W terminals, current has
to be limited to 400 mA.

- Initial contact resistance : 100 mΩ max.
- Insulation resistance : 1 GΩ min. at 500 VDC
- Dielectric strength : 1,500 Vrms between terminals
1,000 Vrms between terminals and frame



LED COMPONENT SPECIFICATIONS

LED color	Forward current	Typ. forward voltage	Max. forward voltage
Super red (LOS)	20 mA	1.95 V	1.95 V
Yellow (LOY)	20 mA	2 V	2.05 V
Green (LOG)	20 mA	2.1 V	2.5 V
Blue (LOB)	20 mA	3.2 V	4 V

A resistor must be series-connected by the user.
Resistor value = $\frac{\text{supply voltage} - \text{LED forward voltage}}{\text{LED forward current}}$

The company reserves the right to change specifications without notice.

IP series

Pushbutton switches for harsh environments •
bushing Ø 12 mm • latching



GENERAL SPECIFICATIONS

- Panel thickness : 1.5 mm (.059) min.
5.5 mm (.217) max.
- Total travel : 2.5 mm (.098) ± 0.3 mm
- Typical operating force : 10 N
- Low level/mech. life : 200.000 cycles
- Torque : 1.5 Nm max. applied to nut
- Soldering : 320 °C (608 °F) max. for 3 sec.



MATERIALS

- Case : thermoplastic, UL 94-V0
- Actuator : polyamide 6/6
- Bushing/bezel : zinc die-cast (zamak), black painted
- Contacts : silver, gold plated
- Output wires (flying lead terminals) :
F version : AWG20, section 0.6 mm²
W version : AWG24, section 0.23 mm²
- LED wires :
- F version** : AWG26, section 0.12 mm²
W version : AWG24, section 0.23 mm²
- Lens : polycarbonate
- Terminal seal : epoxy

APEM products may be recycled at end-of-life for the re-claiming of valuable metal components.

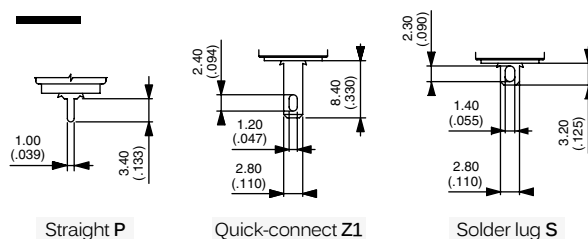
AGENCY APPROVAL



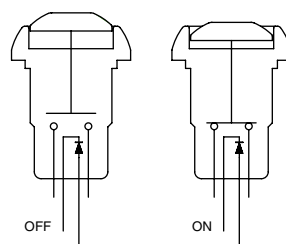
2 A 125 VAC/250 VAC
File E83438
See following pages.



TERMINALS

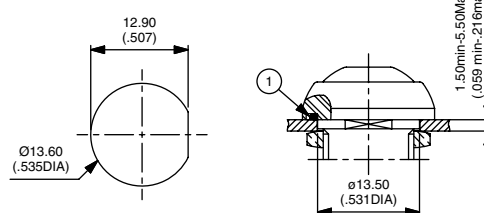


ELECTRICAL FUNCTION



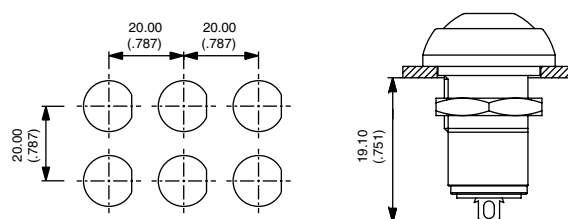
MOUNTING

PANEL CUT-OUT



① - Flat seal

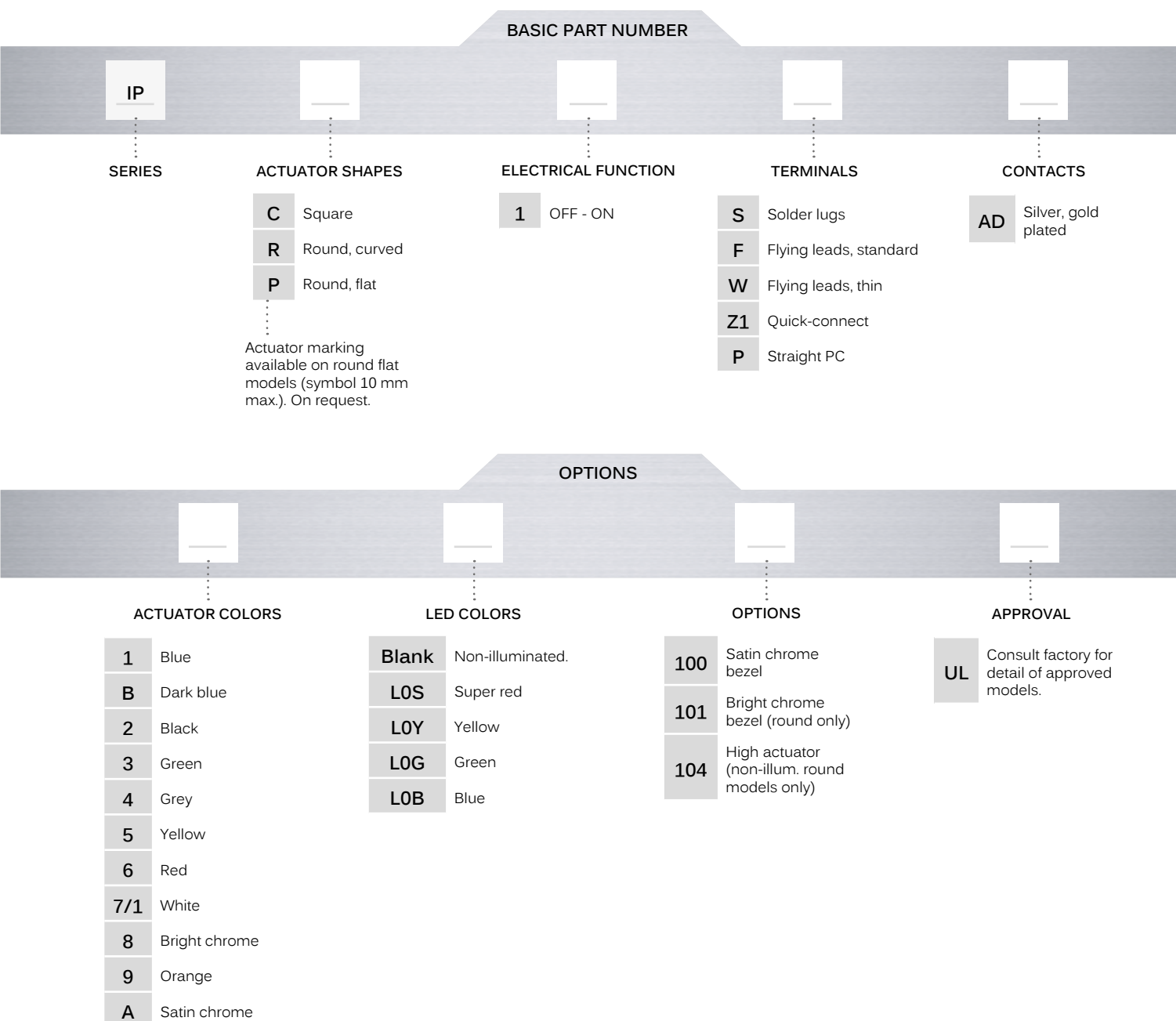
MATRIX MOUNTING - BACK OF PANEL SPACE REQUIREMENT



Pushbutton switches for harsh environments •
bushing Ø 12 mm • latching



BUILD YOUR PART NUMBER



ABOUT THIS SERIES

On the following pages, you will find successively basic part numbers of switches and options in the same order as in above chart.

- Notice** : please note that not all combinations of above numbers are available. Refer to the following pages for further information.
- A sealing boot** is available to protect the switches against frost and sand (P/N U5125). See "Sealing Boots" section of website.
- Mounting accessories** : Standard hardware supplied : 1 hex nut 14 mm (.551) across flats and 1 O-Ring.

IP series

Pushbutton switches for harsh environments •
bushing Ø 12 mm • latching

ILLUMINATED - SQUARE MODELS



Solder lug terminals

IPC1SAD

OFF - ON

Flying lead terminals

IPC1FAD

OFF - ON

For THIN flying leads, replace F with W.

Also available with straight PC : **IPC1PAD** or quick-connect terminals : **IPC1Z1AD**.

Wire colors : black : contact, red : LED anode(+), blue : LED cathode(-)

ILLUMINATED - ROUND MODELS



Solder lug terminals

IPR1SAD

OFF - ON

Flying lead terminals

IPR1FAD

OFF - ON

For THIN flying leads, replace F with W.

Also available with straight PC : **IPR1PAD** or quick-connect terminals : **IPR1Z1AD**.

Wire colors : black : contact, red : LED anode(+), blue : LED cathode(-)

NON-ILLUMINATED - SQUARE MODELS



Solder lug terminals

IPC1SAD

OFF - ON

Flying lead terminals

IPC1FAD

OFF - ON

For THIN flying leads, replace F with W.

Also available with straight PC : **IPR1PAD** or quick-connect terminals : **IPC1Z1AD**.

NON-ILLUMINATED - ROUND MODELS



CURVED ACTUATOR

Solder lug terminals

IPR1SAD

OFF - ON

Flying lead terminals

IPR1FAD

OFF - ON

FLAT ACTUATOR

Solder lug terminals

IPP1SAD

OFF - ON

Flying lead terminals

IPP1FAD

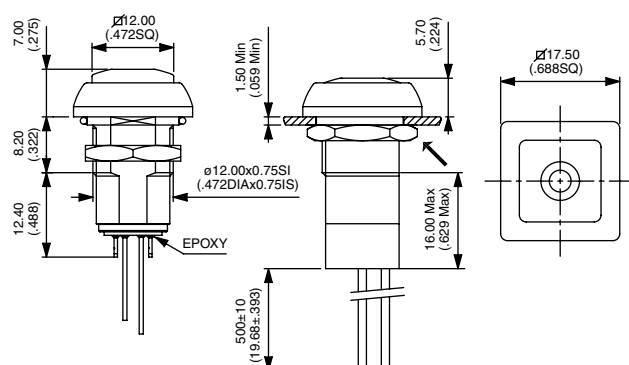
OFF - ON

For THIN flying leads, replace F with W.

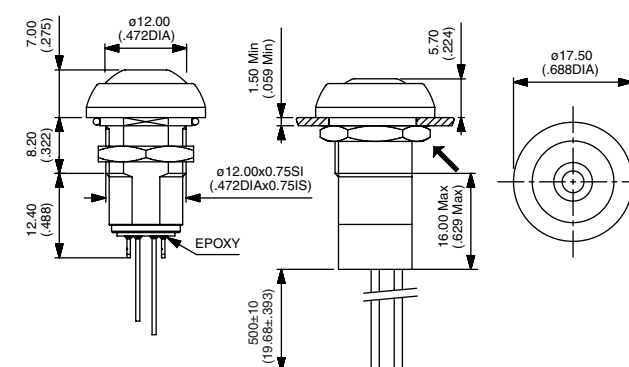
Also available with straight PC : **IP•1PAD** or quick-connect terminals : **IP•1Z1AD**

→ FLAT

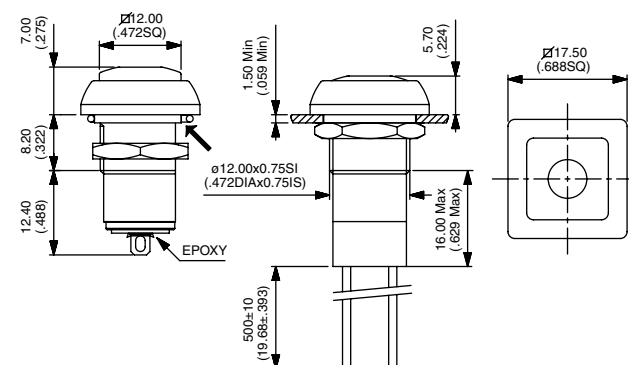
All drawings with standard flying lead terminals.



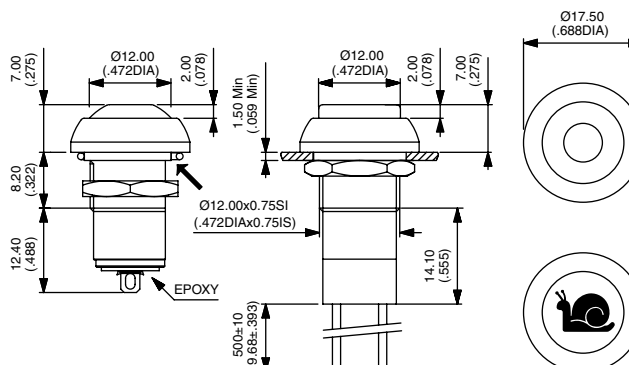
→ FLAT



→ FLAT



→ FLAT



IP series

Pushbutton switches for harsh environments •
bushing Ø 12 mm • latching

ACTUATOR COLORS

BASIC P/N

1	Blue	6	Red
B	Dark blue	7/1	White
2	Black	8	Bright chrome
3	Green	9	Orange
4	Grey	A	Satin chrome
5	Yellow		

LED COLORS

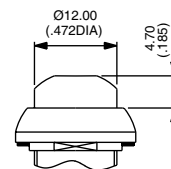
BASIC P/N

Blank	Non-illuminated
L0S	Super red
L0Y	Yellow
L0G	Green
L0B	Blue

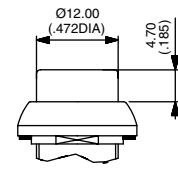
OPTIONS

BASIC P/N

100	Satin chrome bezel
101	Bright chrome bezel (round only)
104	High actuator - For round, non-illuminated only



104 IPR



104 IPP

AGENCY APPROVAL

BASIC P/N

UL
Consult factory for details of approved models.
To order switches marked UL, complete above box with "UL".

Mouser Electronics

Authorized Distributor

Click to View Pricing, Inventory, Delivery & Lifecycle Information:

[Apem:](#)

[IPR1FAD2-UL](#)