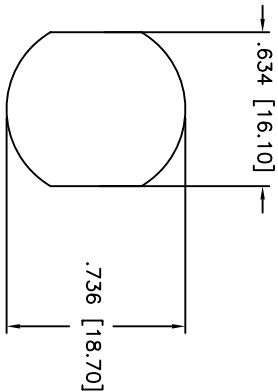
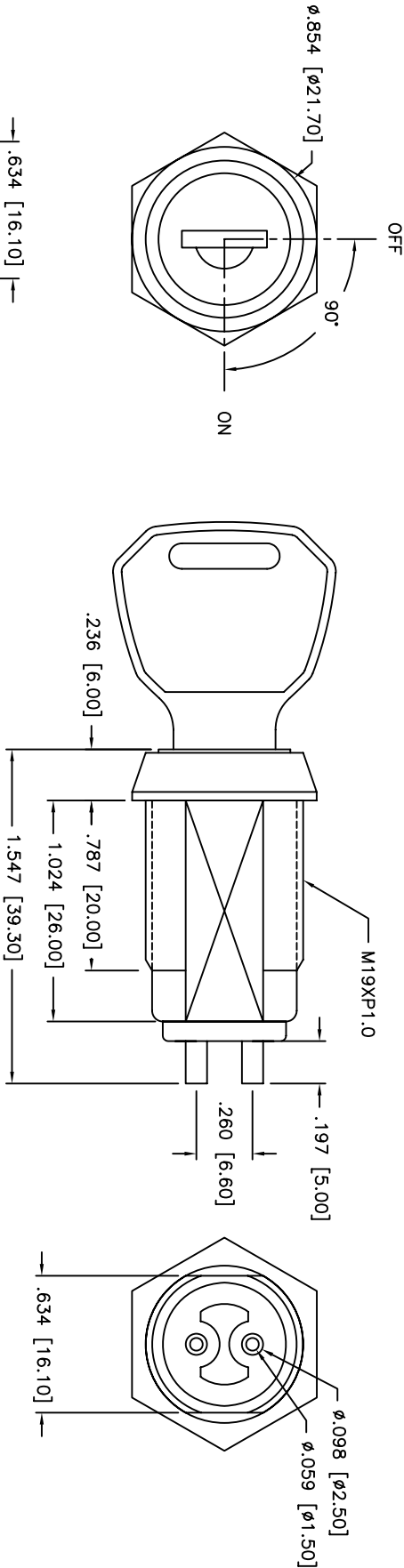


THIS DOCUMENT IS THE PROPERTY OF APEM COMPONENTS AND SHALL NOT BE COPIED, REPRODUCED, DISCLOSED OR USED AS THE BASIS FOR MANUFACTURING OR SALE WITHOUT PERMISSION OF A DULY AUTHORIZED REPRESENTATIVE OF APEM COMPONENTS INC.

DATE	SYM	REVISION RECORD	DWN.	CK.
				PD



DESCRIPTION: ON-OFF KEY SWITCH WITH DUST PROOF SHUTTER, AND 5-DISC TUMBLER CYLINDER.


SPECIFICATIONS:

CONTACT RATING: 4A 125VAC OR 2A 250VAC

HOUSING: ZINC ALLOY WITH CHROME PLATING

KEY: DOUBLE-BITTED NICKEL PLATED BRASS

CONTACTS AND TERMINALS: SILVER PLATED

Q.A. INSPECT.	DESIGNATES CRITICAL DIMENSION	TOLERANCES (UNLESS AS NOTED)	ANGLE = $\pm 10.5^\circ$
	63 Neck Rd. 01835 Haverhill, MA 01835 Phone 978-372-3534	INCH (MM)	SHEET 1 OF 1
TITLE		ON-OFF KEYSWITCH	THIRD ANGLE PROJECTION
DATE	DRAWING NO.	REV	
2/9/07	JD8307-2	A	

# Mouser Electronics

Authorized Distributor

Click to View Pricing, Inventory, Delivery & Lifecycle Information:

[Apem:](#)

[JD83072](#)