

# AV series

Tactile security pushbutton switches •  
Ø 19 mm • momentary (NO)



## DISTINCTIVE FEATURES

Tactile feedback

Illuminated or non-illuminated

Momentary (NO)

Marking available



## ENVIRONMENTAL SPECIFICATIONS

- Optional front panel sealing : IP65 according to IEC 60529
- Operating temperature : -30 °C to +70 °C (-22 °F to +158 °F)



## ELECTRICAL SPECIFICATIONS

- Max. current/voltage rating with resistive load : 50 mA 24 VDC
- Initial contact resistance : 100 mΩ max.
- Insulation resistance : 1,000 MΩ min. at 500 VDC
- Dielectric strength : 500 Vrms 50 Hz min. between terminals  
2,000 Vrms 50 Hz min. between terminals and frame
- Electrical life : 1,000,000 cycles at full load

### LED COMPONENT SPECIFICATIONS

LED color	Forward current	Typ. forward voltage	Max. forward voltage
Blue	20 mA	3.3 V	3.8 V
Green	20 mA	4 V	4.5 V
Yellow	20 mA	2 V	2.5 V
Red	20 mA	1.95 V	2.5 V
White	20 mA	3.3 V	4 V
Amber	20 mA	2.3 V	2.8 V
Red / green	20 mA	1.85 V / 2.2 V	2.5 V

A resistor must be series-connected by the user

Resistor value =  $\frac{\text{supply voltage} - \text{LED forward voltage}}{\text{LED forward current}}$

LED forward current

The company reserves the right to change specifications without notice.



# AV series

Tactile security pushbutton switches •  
 Ø 19 mm • momentary (NO)



## GENERAL SPECIFICATIONS

- Travel : 0.7 mm (.027) ± 0.1 mm (.003)
- Operating force : 7 N ± 2N
- Torque : 1.5 Nm min. - 4 Nm max. applied to nut
- Panel thickness : 1 (.039) to 6 mm (.236) max.
- Hand soldering : 270 °C, 3 seconds max.



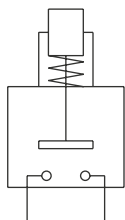
## MATERIALS

- Case : PBT UL94-V0
- Terminals : brass, gold plated
- Contacts : gold plated dome
- Bushing and actuator : see following pages
- LED

APEM products may be recycled at end-of-life for the re-claiming of valuable metal components.



## ELECTRICAL FUNCTIONS



Function 3 (NO)



## MOUNTING

- Panel cut-out : Ø 19.2 mm (.755)
- Min. pitch for matrix mounting :  
 30 mm x 30 mm (1.181x1.181)

# AV series

Tactile security pushbutton switches •  
Ø 19 mm • momentary (NO)



## BUILD YOUR PART NUMBER

BASIC PART NUMBER						
AV		C7				
SERIES	ACTUATOR TYPES	CASE	ILLUMINATION	FUNCTION	CONTACTS	TERMINALS
	09 Flat 19 Curved		0 No L Illuminated	3 Normally open (NO)	D Gold plated dome	2 Solder 9 Screw
OPTIONS						
BUSHING/ACTUATOR MATERIALS	LED COLORS	MARKING	SEALING			
Non-illuminated models						
00 (std)	Nickel plated brass / Nickel plated brass	Blank	No LED	see following pages		
10	Nickel plated brass / Stainless steel	1	Blue			
30	Chrome plated brass / Stainless steel	3	Green			
40	Stainless steel / Stainless steel	5	Yellow			
70	Black chrome plated brass / Black chrome plated brass	6	Red			
Illuminated models						
00 (std)	Nickel plated brass / Nickel plated brass	7	White			
10	Nickel plated brass / Stainless steel	9	Amber			
20	Chrome plated brass / Chrome plated brass	2	Red / green			
40	Stainless steel / Stainless steel					
50	Stainless steel / Nickel plated brass					
70	Black chrome plated brass / Black chrome plated brass					
					Blank	No sealing
					K	Sealed to IP65



## ABOUT THIS SERIES

On the following pages, you will find successively basic part numbers of switches and options in the same order as in above chart.

⚠ **Notice:** please note that not all combinations of above numbers are available. Refer to the following pages for further information.

⚠ **Mounting accessories:** standard hardware supplied : 1 hex nut. Standard and special hardware is presented in the "Hardware" section of website.

# AV series

Tactile security pushbutton switches • Ø 19 mm • momentary (NO)

## FLAT ACTUATOR - NON ILLUMINATED



Solder lug terminals  
**AV09C703D2**

Screw terminals  
**AV09C703D9**

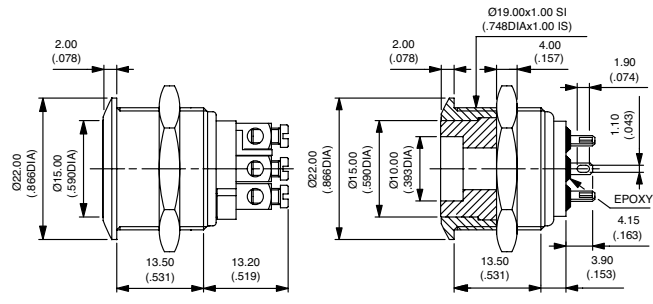
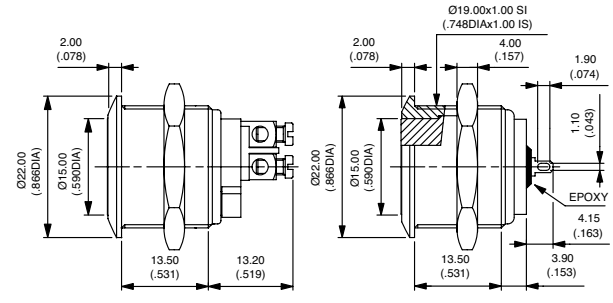
## FLAT ACTUATOR - ILLUMINATED



Solder lug terminals  
**AV09C7L3D2**

Screw terminals  
**AV09C7L3D9**

Hex nut 22 (.866) across flats



### BUSHING/ACTUATOR MATERIALS



### NON-ILLUMINATED MODELS

CODE	BUSHING	ACTUATOR
00 (std)	Nickel plated brass	Nickel plated brass
10	Nickel plated brass	Stainless steel
30	Chrome plated brass	Stainless steel
40	Stainless steel	Stainless steel
70	Black chrome plated brass	Black chrome plated brass

### ILLUMINATED MODELS

CODE	BUSHING	ACTUATOR
00 (std)	Nickel plated brass	Nickel plated brass
10	Nickel plated brass	Stainless steel
20	Chrome plated brass	Chrome plated brass
40	Stainless steel	Stainless steel
50	Stainless steel	Nickel plated brass
70	Black chrome plated brass	Black chrome plated brass

### LED COLORS



Blank	No LED	6	Red
1	Blue	7	White
3	Green	9	Amber
5	Yellow	2	Red/green

# AV series

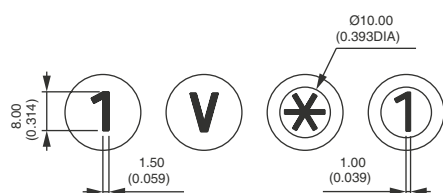
Tactile security pushbutton switches •  
 Ø 19 mm • momentary (NO)

## MARKING

BASIC P/N

For **flat or curved actuator**.

- by laser etching on non-illuminated brass or stainless steel actuator.
- by hot stamping on thermoplastic insert (illuminated actuators)



Select an option from each of the two paragraphs opposite (Type /Color).

## TYPE OF MARKING

<b>0 to 9</b>	Numbers 0 to 9
<b>X</b>	Symbol *
<b>Y</b>	Symbol #
<b>A to N</b>	Letters A to N
<b>P to W</b>	Letters P to W
<b>0</b>	Letter O

Letter O : same code and same design as number 0.  
 For special symbols, consult factory.  
 Minimum order : 500 pieces

## COLOR OF MARKING

**Non-illuminated actuators :**

<b>0 (std)</b>	Same as finish
<b>2</b>	Black

Note : a finished product supplied in version "0" cannot be modified to version «2».

**Illuminated actuators**

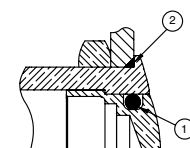
<b>2</b>	Black (on white)
----------	------------------

## SEALING

BASIC P/N

<b>Blank</b>	No sealing
<b>K</b>	Front panel sealing to IP65

## OPTION K



① - internal gasket

② - external gasket

# Mouser Electronics

Authorized Distributor

Click to View Pricing, Inventory, Delivery & Lifecycle Information:

[Apem:](#)

[AV09C703D240E](#)