

AV series

Security pushbutton switches suitable for 250 VAC • approved according to EN 61058-1



DISTINCTIVE FEATURES

Mains switches approved to EN61058-1

Ø 16 (.629), 19 (.748) and 22 mm (.866)

Latching

Three terminal types



ENVIRONMENTAL SPECIFICATIONS

- Optional front panel sealing : IP65 according to IEC 60529
- Operating temperature : -30 °C to +70 °C (-22 °F to +158 °F)



ELECTRICAL SPECIFICATIONS

- Max. current/voltage rating with resistive load : 1 A 250 VAC
- Initial contact resistance : 50 mΩ max.
- Insulation resistance : 1,000 MΩ min. at 500 VDC
- Dielectric strength :
2,000 Vrms 50 Hz min. between terminals
500 Vrms 50 Hz between terminals and frame
- Electrical life : 10,000 cycles at 1 A 250 VAC



GENERAL SPECIFICATIONS

- Torque : 5 Nm min. - 14 Nm max. applied to nut
- Panel thickness :
Ø 16 : 1 (.039) to 6 mm (.236) max.
Ø 19 and Ø 22 : 1 (.039) to 9 mm (.354) max.
- Low level or mechanical life : 200,000 cycles
- Hand soldering : 300 °C (572 °F), 4 sec. max.



MATERIALS

- Case : PA4-6, UL94-V0
- Contacts : silver (A)
- Bushing & actuator : see following pages

APEM products may be recycled at end-of-life for the re-claiming of valuable metal components.

The company reserves the right to change specifications without notice.



AV series

Security pushbutton switches suitable
for 250 VAC • approved according to EN 61058-1

AGENCY APPROVAL



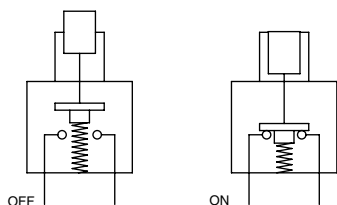
EN61058-1 1A 250 VAC
All models



marked



ELECTRICAL FUNCTIONS



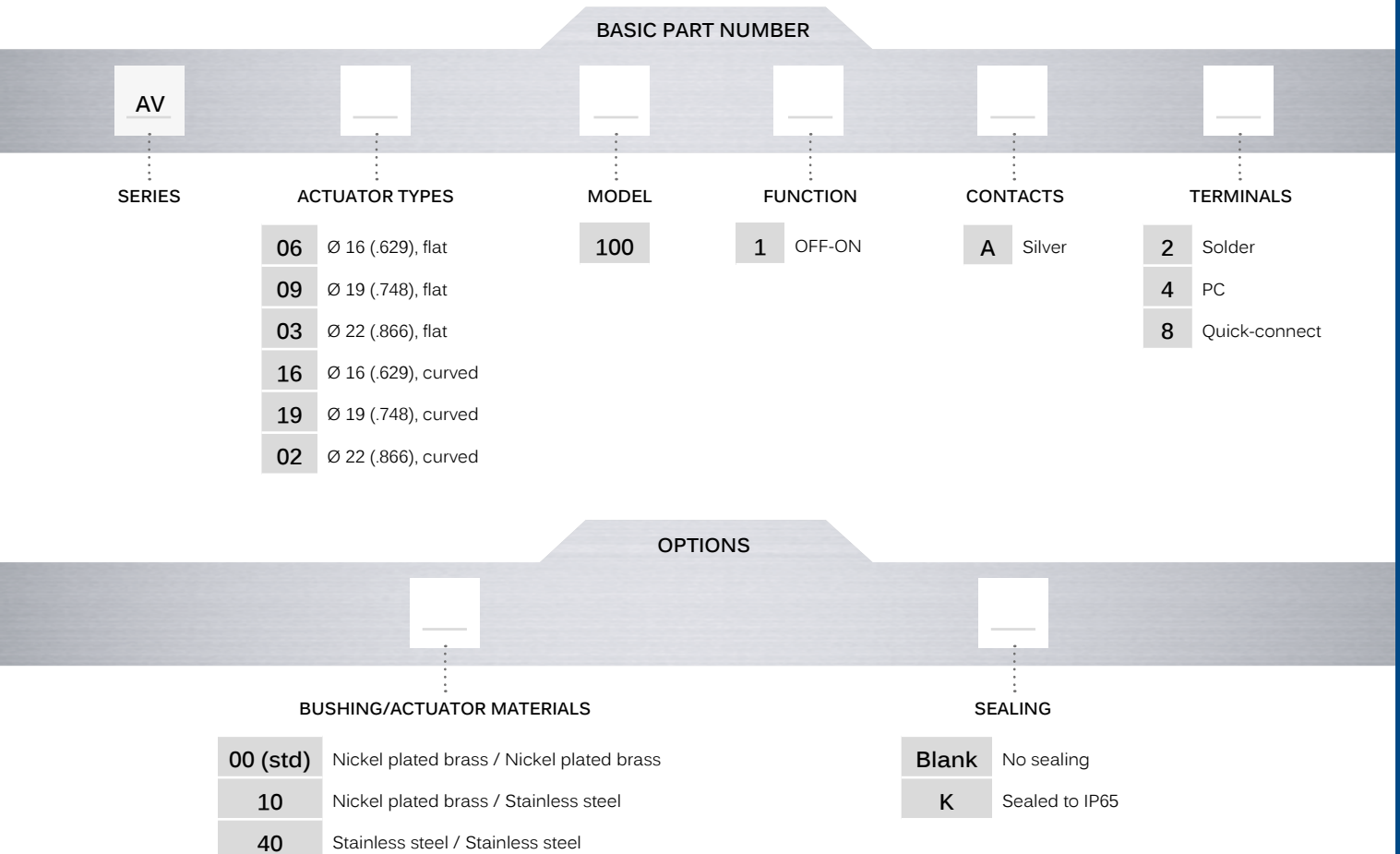
PANEL MOUNTING

- Panel cut-out :
Ø 16.2 mm (.755)
Ø 19.2 mm (.755)
or Ø 22.2 mm (.874)

Security pushbutton switches suitable for 250 VAC • approved according to EN 61058-1



BUILD YOUR PART NUMBER



ABOUT THIS SERIES

On the following pages, you will find successively basic part numbers of switches and options in the same order as in above chart.

Notice: please note that not all combinations of above numbers are available. Refer to the following pages for further information.

Mounting accessories: standard hardware supplied : 1 hex nut. Standard and special hardware is presented in the "Hardware" section of website.

AV series

Security pushbutton switches suitable for 250 VAC • approved according to EN 61058-1

Ø 16 (.629) - FLAT OR CURVED ACTUATOR SOLDER LUG TERMINALS



Flat actuator			
AV061001A2	OFF	ON	
Curved actuator			
AV161001A2	OFF	ON	

Product shown in OFF position.

Ø 19 (.748) - FLAT OR CURVED ACTUATOR SOLDER LUG TERMINALS



Flat actuator			
AV091001A2	OFF	ON	
Curved actuator			
AV191001A2	OFF	ON	

Product shown in OFF position.

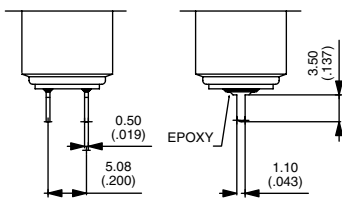
Ø 22 (.866) - FLAT OR CURVED ACTUATOR SOLDER LUG TERMINALS



Flat actuator			
AV031001A2	OFF	ON	
Curved actuator			
AV021001A2	OFF	ON	

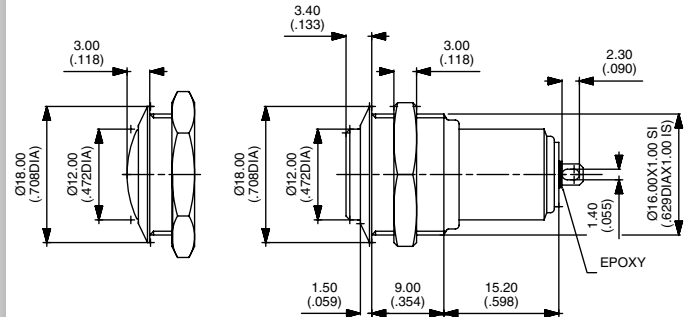
Product shown in OFF position.

STRAIGHT PC TERMINALS

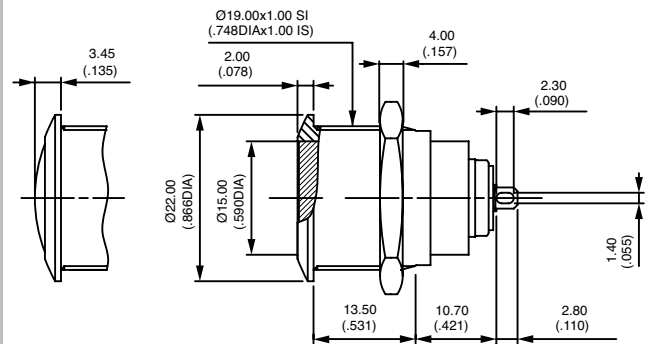


Replace 2 with 4 at the end of the model numbers shown above.

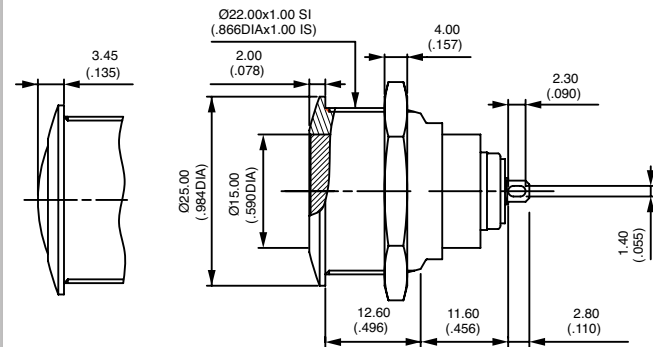
Hex nut 19 (.748) across flats



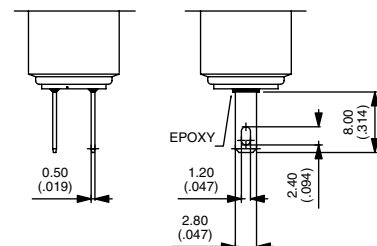
Hex nut 22 (.866) across flats



Hex nut 25 (.984) across flats



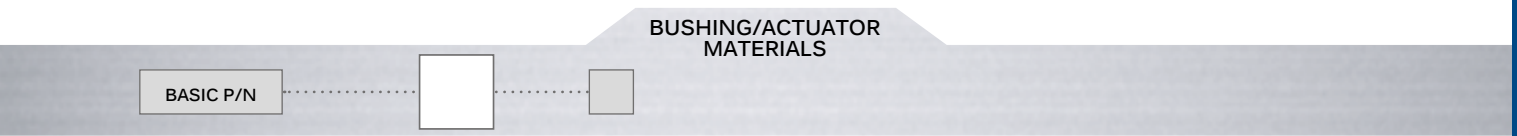
QUICK-CONNECT TERMINALS



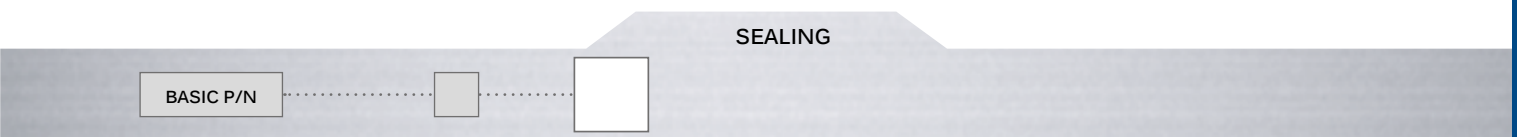
Replace 2 with 8 at the end of the model numbers shown above.

AV series

Security pushbutton switches suitable for 250 VAC • approved according to EN 61058-1

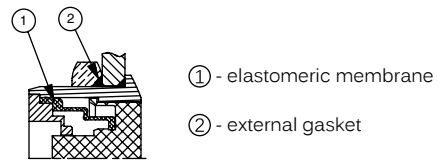


CODE	BUSHING	ACTUATOR
00 (std)	Nickel plated brass	Nickel plated brass
10	Nickel plated brass	Stainless steel
40	Stainless steel	Stainless steel



Blank No sealing
 K Front panel sealing to IP65

OPTION K



Mouser Electronics

Authorized Distributor

Click to View Pricing, Inventory, Delivery & Lifecycle Information:

[Apem:](#)

[AV09820KMZBK](#)