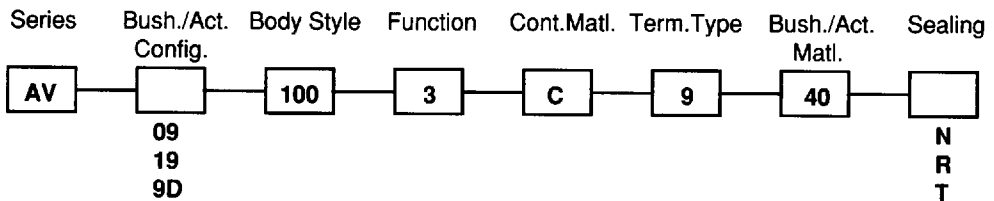


*New!*

# AV SERIES ANTI-VANDAL PUSHBUTTON SWITCHES

SPECIFICATIONS	FEATURES
<p><b>Contact ratings:</b> 2 A at 48 VDC max. (resistive load)  <b>Initial contact resistance:</b> 10 milliohms max. at 1 A, 2 V  <b>Insulation resistance:</b> 1000 megohms min. at 500 VDC  <b>Dielectric strength:</b> 4000 V rms min. between terms. &amp; frame. 3000 V rms min. between terminals  <b>Electrical life:</b> 100,000 cycles min. at full load  <b>Mechanical life:</b> 1,000,000 cycles min.  <b>Operating temperature range:</b> -20°C to +55°C  <b>Solder heat resistance:</b> 300°C max. for 5 seconds  <b>Washing not recommended</b></p>	<ul style="list-style-type: none"> <li>● .755" (19 mm) dia. and .866" (22 mm) dia. models.</li> <li>● Single pole NO momentary action.</li> <li>● Standard models provide protection per IP54.</li> <li>● Optional sealing options provide protection to IP65.</li> <li>● Extremely rugged and durable.</li> </ul>
	MATERIALS
	<p><b>Contacts &amp; terminals:</b> Silver plated brass  <b>Bushing &amp; Actuator:</b> Stainless steel  <b>Case:</b> PBT    <b>Hex. Mounting Nut:</b> Nickel plated brass</p>

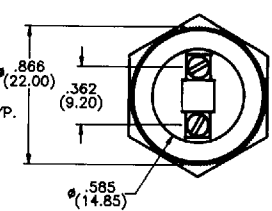
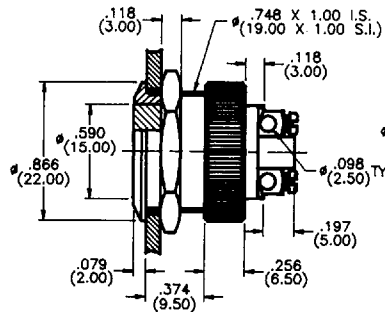
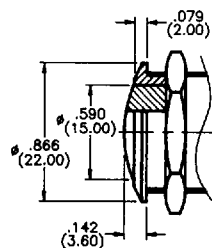
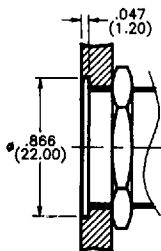
**ORDER FORMAT:** For complete model no., fill in 2 empty boxes with selected options shown below.  
 Example of complete model no. -  
**AV191003C940N**



**19mm**

**Bushing/Actuator configurations**

**Screw terminals**



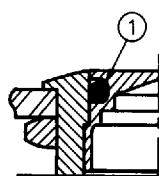
9D flat Act. w/flush mount Bush.

19 curved Act. & Bush.

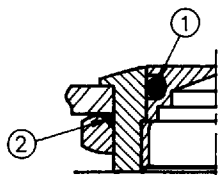
9D flat Act. & curved Bush.

Rear view all models

**N** - no sealing (std'd)



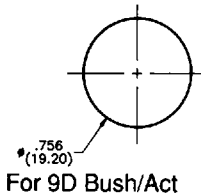
**R** - ① Internal seal meets IP65



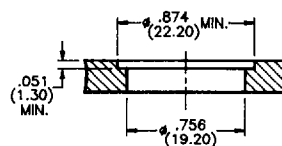
**T** - ① Internal seal & ② front panel seals meet IP65

**Sealing**

For 09 & 19 Bush/Act



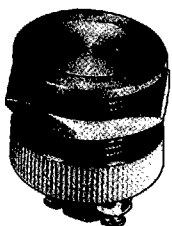
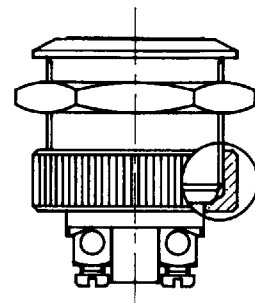
For 9D Bush/Act



Min. dimensions for matrix mounting: 1.181" (30mm) x 1.181" (30mm).

**Mounting Holes**

**R** and **T** sealing options also feature increased impact resistance provided by knurled nut as shown below.



**AV9D1003C940N**  
(Model shown)



**Schematic**

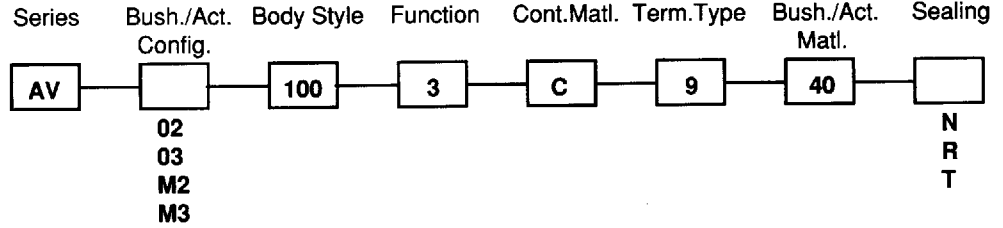
SPECIFICATIONS SUBJECT TO CHANGE WITHOUT NOTICE.

H

*New!*

# AV SERIES ANTI-VANDAL PUSHBUTTON SWITCHES

**ORDER FORMAT:** For complete model no., fill in 2 empty boxes with selected options shown below. Example of complete model no. -  
**AV021003C940N**

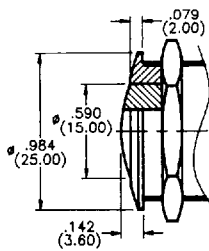


SPECIFICATIONS SUBJECT TO CHANGE WITHOUT NOTICE.

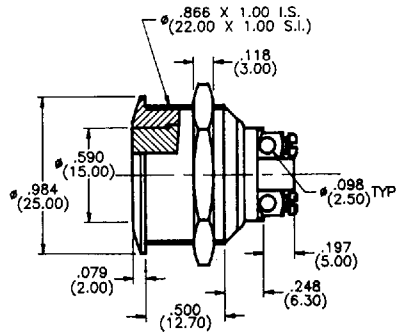
## 22mm

### Bushing/Actuator configurations

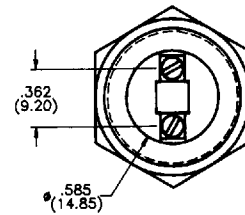
### Screw terminals



02 curved Act. & Bush.

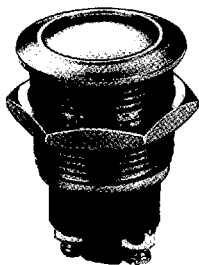
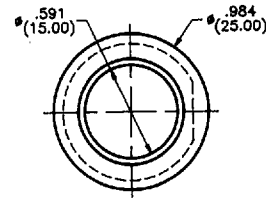


03 flat Act. & curved Bush.



Rear view all models

M2 curved Actuator & curved Bushing with 'D' flat on Bushing  
or  
M3 flat Actuator & curved Bushing with 'D' flat on Bushing

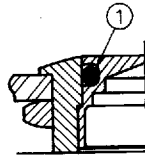


AV021003C940N  
(Model shown)

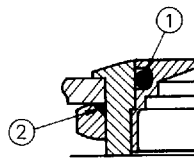


Schematic

N - no sealing (std'd)



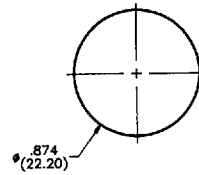
R - ① Internal seal meets IP65



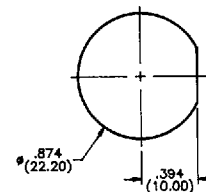
T - ① Internal seal & ② front panel seals meet IP65

Sealing

For 02 & 03 Bush/Act



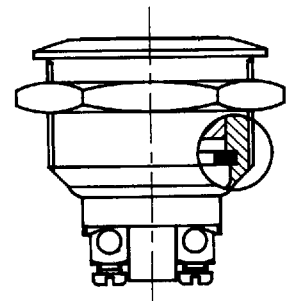
For M2 & M3 Bush/Act



Min. dimensions for matrix mounting: 1.181" (30mm) x 1.181" (30mm).

Mounting Holes

R and T sealing options also feature increased impact resistance provided by an internal ring as shown below.



# Mouser Electronics

Authorized Distributor

Click to View Pricing, Inventory, Delivery & Lifecycle Information:

[Apem:](#)

[AV191003C940R](#) [AV021003C940N](#) [AV021003C940T](#)