

Features

- Fast Switching
- Improved dv/dt Capability
- Epoxy Meets UL 94 V-0 Flammability Rating
- Moisture Sensitivity Level 1
- Halogen Free Available Upon Request By Adding Suffix "-HF"
- Lead Free Finish/RoHS Compliant ("P" Suffix Designates RoHS Compliant. See Ordering Information)

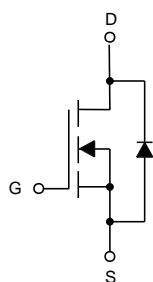
Maximum Ratings

- Operating Junction Temperature Range : -55°C to +150°C
- Storage Temperature Range: -55°C to +150°C
- Thermal Resistance: 3.57°C/W Junction to Case

Parameter	Symbol	Rating	Unit
Drain-Source Voltage	V_{DS}	200	V
Gate-Source Voltage	V_{GS}	±30	V
Continuous Drain Current $T_C=25^\circ\text{C}$	I_D	18	A
Pulsed Drain Current	I_{DM}	72	A
Single Pulse Avalanche Energy ^(Note 1)	E_{AS}	320	mJ
Total Power Dissipation	P_D	35	W

Note: 1. $L=10\text{mH}$, $I_{AS}=8\text{A}$, $V_{DD}=50\text{V}$, $R_G=25\Omega$, Starting $T_J=25^\circ\text{C}$

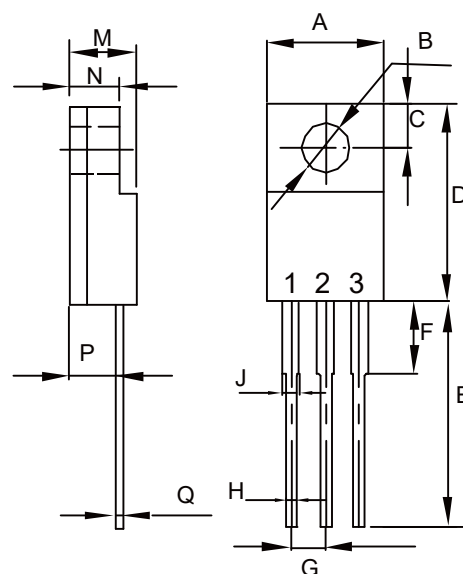
Internal Structure



1. Gate
2. Drain
3. Source

N-CHANNEL MOSFET

TO-220F



DIMENSIONS					
DIM	INCHES		MM		NOTE
	MIN	MAX	MIN	MAX	
A	0.392	0.421	9.96	10.70	
B	0.138		3.50		Φ
C	0.106		2.70		TYP.
D	0.567	0.642	14.40	16.30	
E	0.520		13.20		TYP.
F	---	0.177	---	4.50	
G	0.100		2.54		TYP.
H	0.020	0.035	0.50	0.90	
J	0.043	0.053	1.10	1.35	
M	0.169	0.201	4.30	5.10	
N	---	0.140	---	3.56	
P	0.083	0.126	2.10	3.20	
Q	0.020	0.032	0.50	0.80	

Electrical Characteristics @ 25°C (Unless Otherwise Specified)

Parameter	Symbol	Test Conditions	Min	Typ	Max	Unit
Static Characteristics						
Drain-Source Breakdown Voltage	V _{(BR)DSS}	V _{GS} =0V, I _D =250μA	200			V
Gate-Source Leakage Current	I _{GSS}	V _{DS} =0V, V _{GS} =±20V			±100	nA
Zero Gate Voltage Drain Current	I _{DSS}	V _{DS} =200V, V _{GS} =0V			1	μA
		V _{DS} =160V, V _{GS} =0V, T _C =125°C			10	
Gate-Threshold Voltage ^(Note 2)	V _{GS(th)}	V _{DS} =V _{GS} , I _D =250μA	1		3	V
Drain-Source On-Resistance ^(Note 2)	R _{DS(on)}	V _{GS} =10V, I _D =9A		0.136	0.16	Ω
Forward Tranconductance	g _{FS}	V _{DS} =30V, I _D =9A		8		S
Dynamic Characteristics ^(Note 3)						
Input Capacitance	C _{iss}	V _{DS} =25V, V _{GS} =0V, f=1MHz		836		pF
Output Capacitance	C _{oss}			81.2		
Reverse Transfer Capacitance	C _{rss}			3.81		
Total Gate Charge	Q _g	V _{DD} =160V, V _{GS} =10V, I _D =18A		17.7		nC
Gate-Source Charge	Q _{gs}			3.9		
Gate-Drain Charge	Q _{gd}			5.2		
Turn-On Delay Time	t _{d(on)}	V _{DD} =100V, I _D =18A, R _G =5Ω, V _{GS} =10V		41		ns
Turn-On Rise Time	t _r			20		
Turn-Off Delay Time	t _{d(off)}			123		
Turn-Off Fall Time	t _f			6.4		
Drain-Source Body Diode Characteristics						
Continuous Body Diode Current	I _S	T _C =25°C			18	A
Pulsed Diode Forward Current	I _{SM}				72	
Body Diode Voltage	V _{SD}	I _S =9A, V _{GS} =0V			1.5	V
Reverse Recovery Time	t _{rr}	V _{GS} =0V, I _F =18A, di/dt=100A/μs		235		ns
Reverse Recovery Charge	Q _{rr}			1045		nC

Note 2. Pulse Test : Pulse Width $\leq 300\mu s$, Duty Cycle $\leq 2\%$.

3. Guaranteed by Design, Not Subject to Production Testing.

Curve Characteristics

Fig. 1 - Output Characteristics

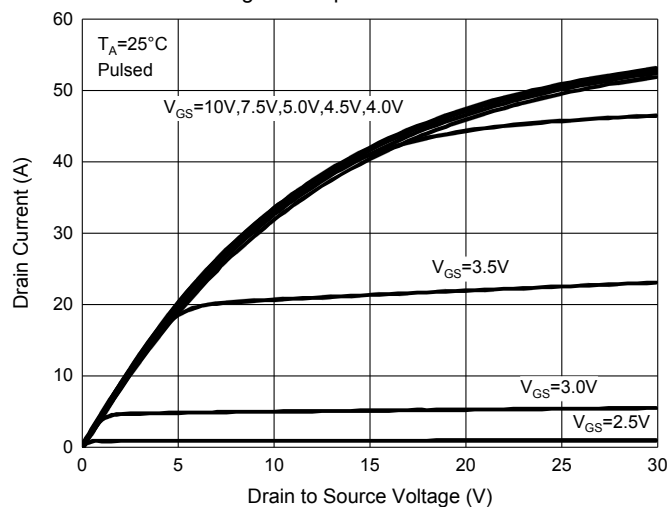


Fig. 2 - Transfer Characteristics

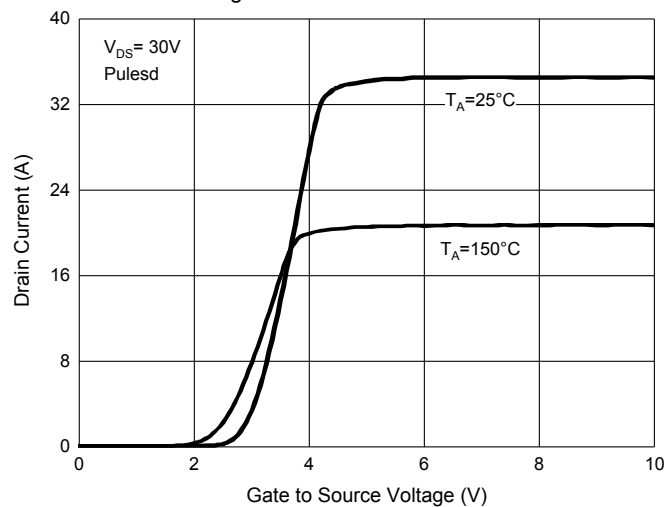


Fig. 3 - $R_{DS(ON)} - I_D$

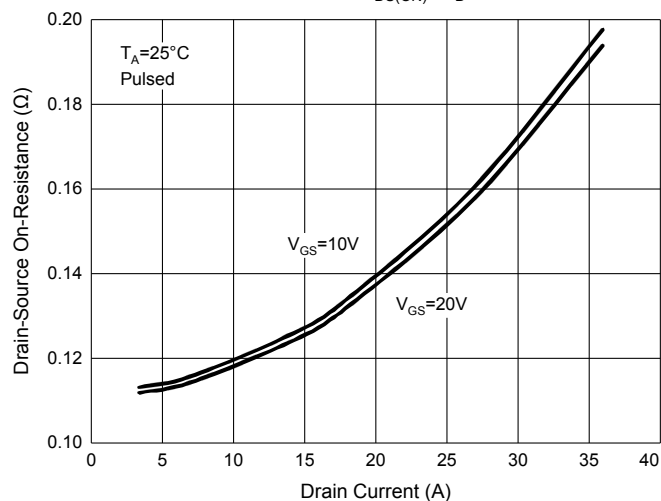


Fig. 4 - $I_S - V_{SD}$

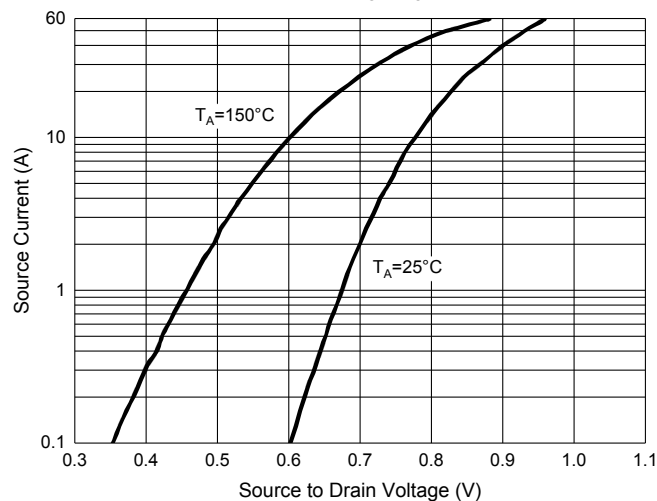


Fig. 5 - Capacitance Characteristics

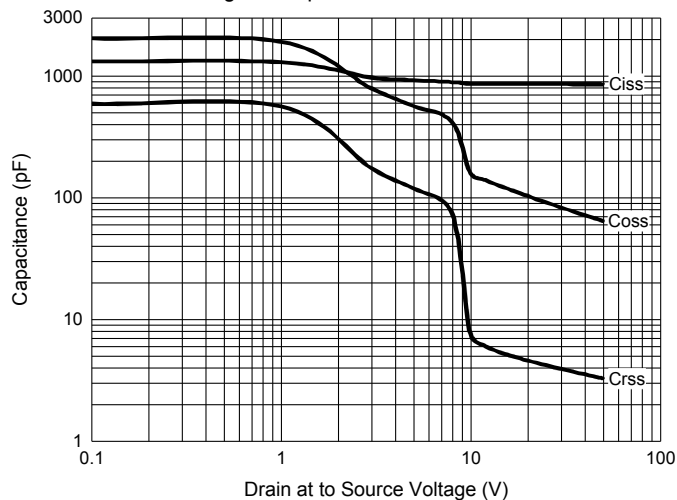
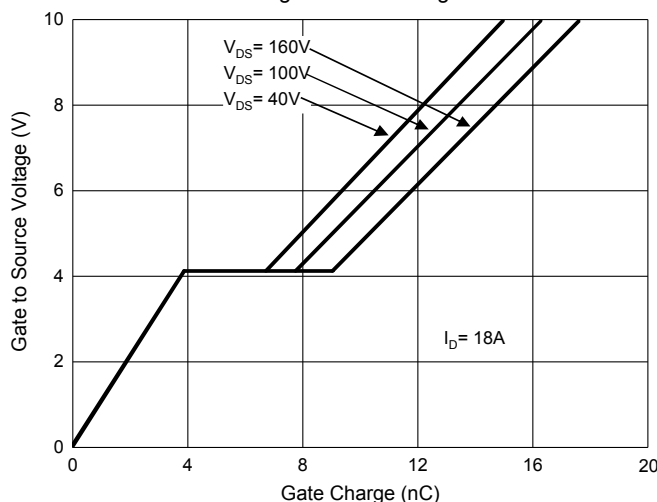


Fig. 3 - Gate Charge



Ordering Information

Device	Packing
Part Number-BP	Bulk:50pcs/Tube, 1Kpcs/Box, 5Kpcs/Carton

Note : Adding "-HF" Suffix For Halogen Free, eg. Part Number-BP-HF

IMPORTANT NOTICE

Micro Commercial Components Corp. reserves the right to make changes without further notice to any product herein to make corrections, modifications , enhancements , improvements , or other changes . **Micro Commercial Components Corp** . does not assume any liability arising out of the application or use of any product described herein; neither does it convey any license under its patent rights ,nor the rights of others . The user of products in such applications shall assume all risks of such use and will agree to hold **Micro Commercial Components Corp** . and all the companies whose products are represented on our website, harmless against all damages. **Micro Commercial Components Corp**. products are sold subject to the general terms and conditions of commercial sale, as published at <https://www.mccsemi.com/Home/TermsAndConditions>.

LIFE SUPPORT

MCC's products are not authorized for use as critical components in life support devices or systems without the express written approval of Micro Commercial Components Corporation.

CUSTOMER AWARENESS

Counterfeiting of semiconductor parts is a growing problem in the industry. Micro Commercial Components (MCC) is taking strong measures to protect ourselves and our customers from the proliferation of counterfeit parts. MCC strongly encourages customers to purchase MCC parts either directly from MCC or from Authorized MCC Distributors who are listed by country on our web page cited below. Products customers buy either from MCC directly or from Authorized MCC Distributors are genuine parts, have full traceability, meet MCC's quality standards for handling and storage. **MCC will not provide any warranty coverage or other assistance for parts bought from Unauthorized Sources.** MCC is committed to combat this global problem and encourage our customers to do their part in stopping this practice by buying direct or from authorized distributors.

Mouser Electronics

Authorized Distributor

Click to View Pricing, Inventory, Delivery & Lifecycle Information:

[Micro Commercial Components \(MCC\):](#)

[MCPF18N20-BP](#)